



iRobot Roomba i7 Side Brush Replacement

iRobot Roomba i7 Side Brush replacement and maintenance guide.

Written By: Ricardo Pazos Rodriguez



INTRODUCTION

Is the Side Brush on your iRobot Roomba i7 having problems? If you notice that the Side Brush of your Roomba is not spinning or that it is having trouble cleaning, it might be jammed with debris. To solve this problem, you will need to unscrew the Side Brush to clean the area around it and replace the old Side Brush with a new one. This guide will help you replace the Side Brush on your iRobot Roomba i7.

The iRobot Roomba i7 Side Brush is located on the right side of the Roomba. The function of the Side Brush is to sweep debris from wall edges and corners and push it into the cleaning path to be suctioned off your floors.

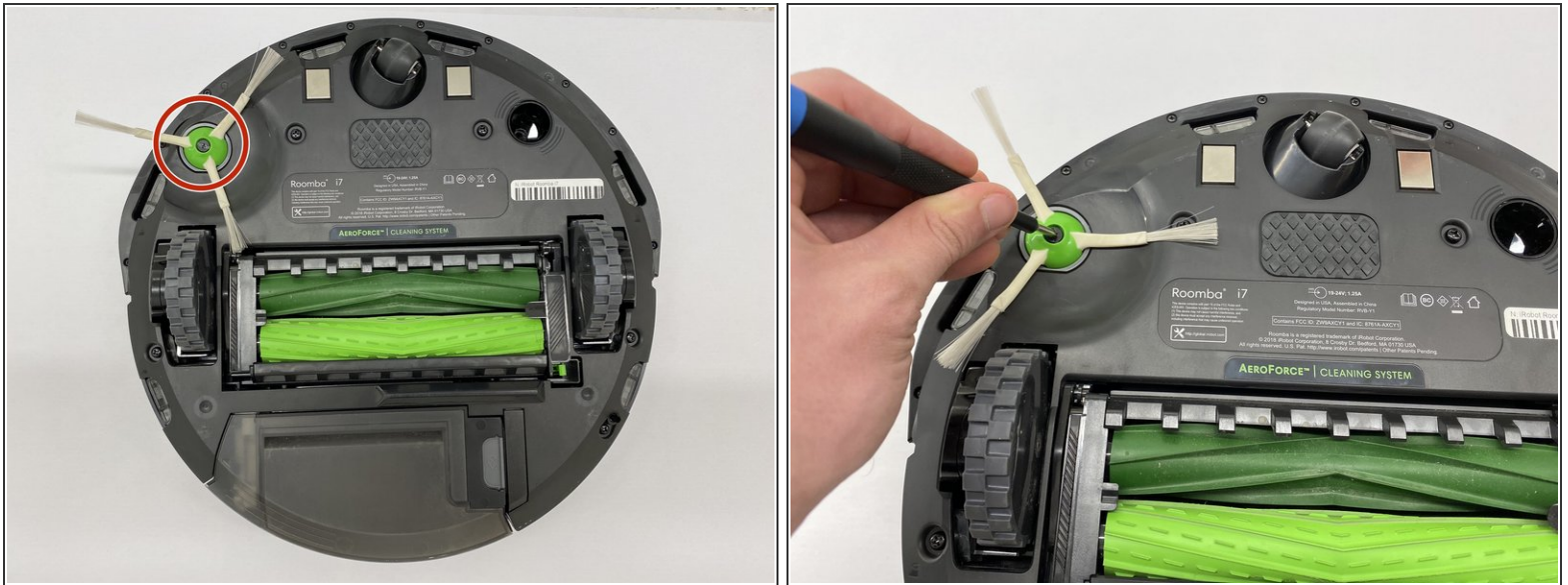
Before you begin using this guide, make sure that your Roomba is turned off and disconnected from the charging station, or Home Base.



TOOLS:

- [Phillips #1 Screwdriver](#) (1)
 - [iFixit Opening Tools](#) (1)
-

Step 1 — Side Brush



- Flip the iRobot Roomba i7 so that the underside is facing upwards.
- Using a Phillips #1 screwdriver, unscrew the 6.27mm-screw in the center of the side brush.

Step 2



- After unscrewing the side brush screw, gently pull the brush up, as shown in the picture.
- If the side brush is difficult to pull, use a plastic opening tool to take it out.

To reassemble your device, follow these instructions in reverse order.