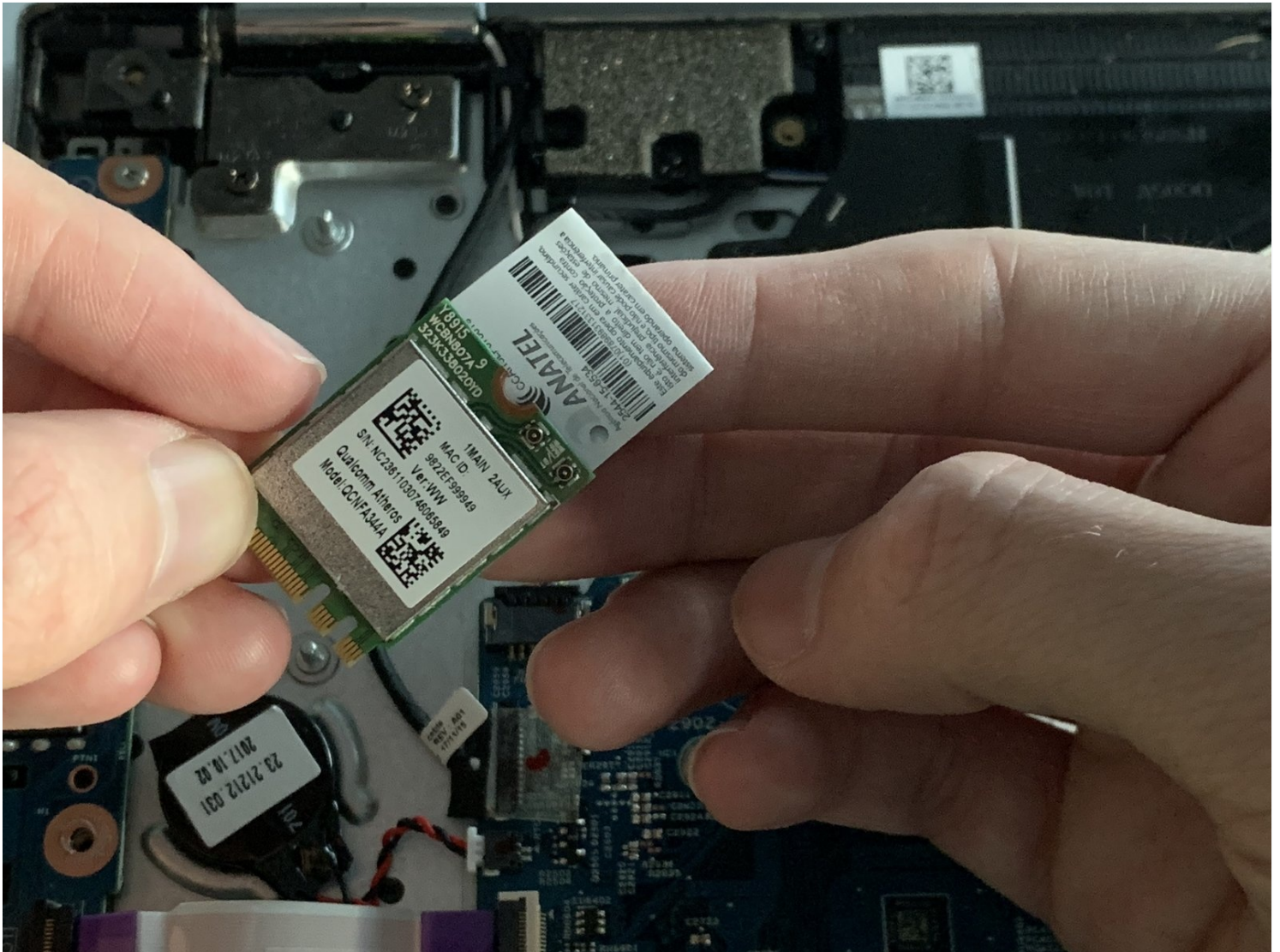




Acer Spin 5 SP515-51GN-807G Wireless (WiFi) Card Replacement

If your Acer Spin 5 SP515-51GN-807G is...

Written By: James Wasielewski



INTRODUCTION

If your Acer Spin 5 SP515-51GN-807G is experiencing issues connecting to wireless (Wi-Fi) networks, use this guide to replace the physical wireless card inside the computer.

Prior to starting this guide, use our [Unable to Connect/Unreliable Connection to the Internet Troubleshooting Page](#) to assure the issues are not a result of user-error or software configuration.

The wireless card is the physical unit that connects your device to wireless internet networks. If this card has become disconnected or has physically malfunctioned, the user will be unable to connect to the internet (wirelessly).

Before using this guide, use our (Back Cover) guide to get a better look at the wireless card unit and inspect it for loose wire connections or physical damage. If it appears to have become disconnected from the motherboard, then simply re-insert the card into its respective port. If either of the two terminals that connect the wireless card to its antenna have become disconnected, then reconnect the terminals and test your connection.

This replacement is fairly simple as the wireless card is easily accessible and only has three connections.

Before beginning, make sure you power off the device completely and complete prerequisite guide listed below.

TOOLS:

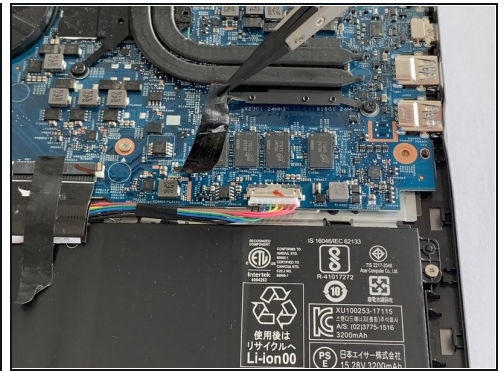
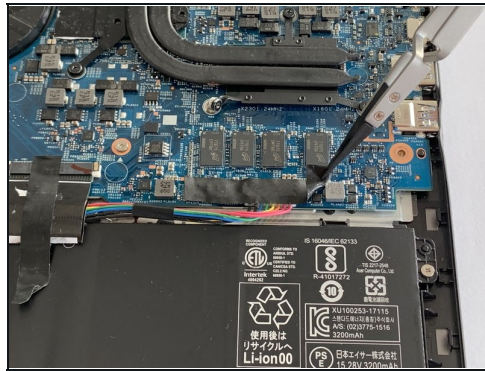
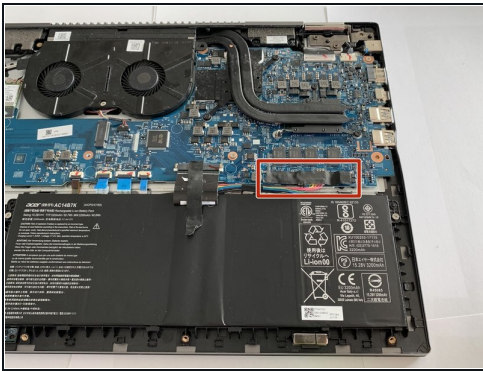
[Phillips #1 Screwdriver](#) (1)

[Magnetic Project Mat](#) (1)

[iFixit Opening Tool](#) (1)

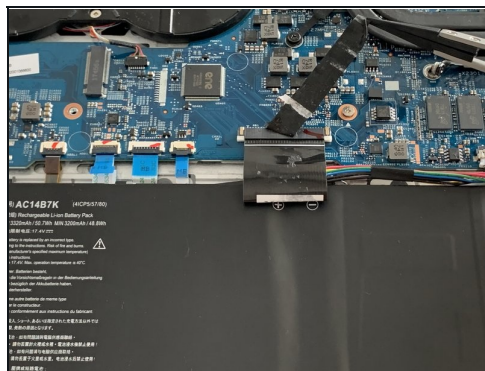
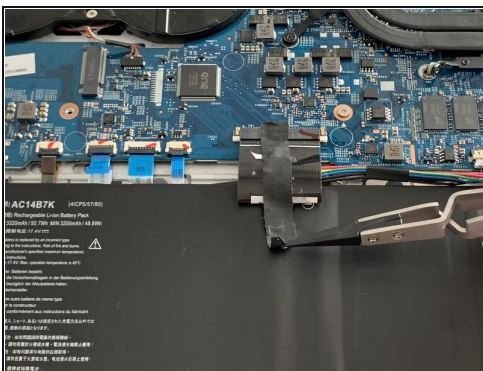
[Phillips #00 Screwdriver](#) (1)

Step 1 — Battery



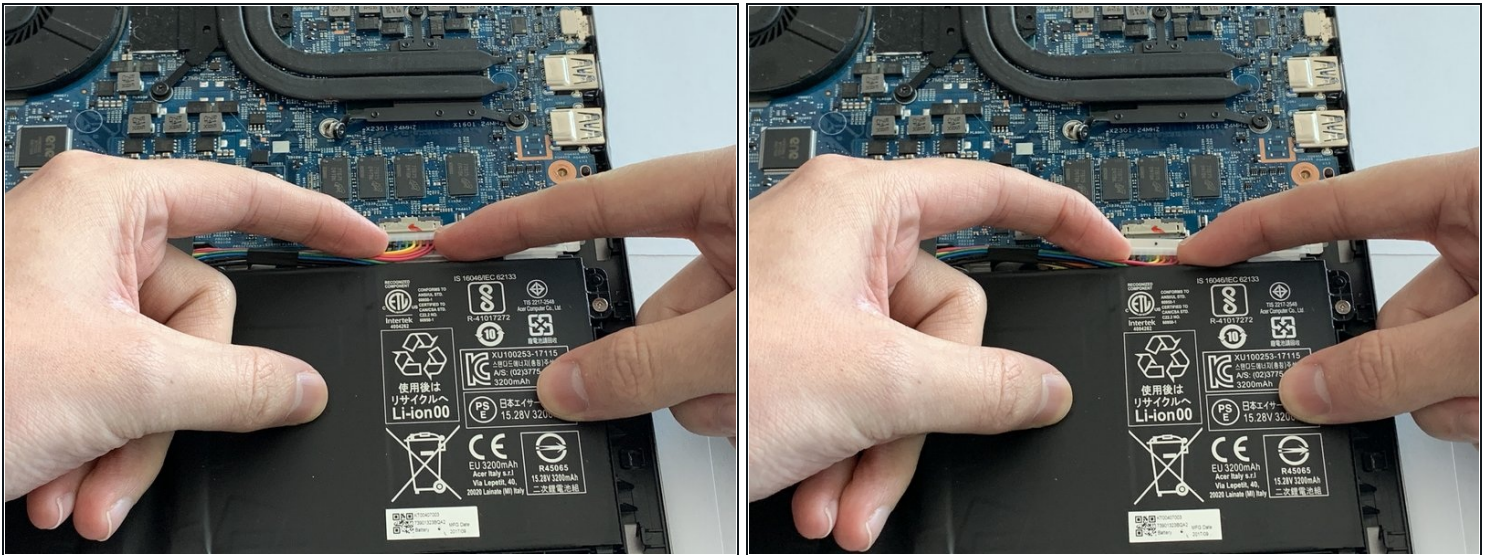
- Using tweezers, remove the piece of black tape over the battery cable connector.

Step 2



- Remove the piece of black tape that covers the battery.

Step 3



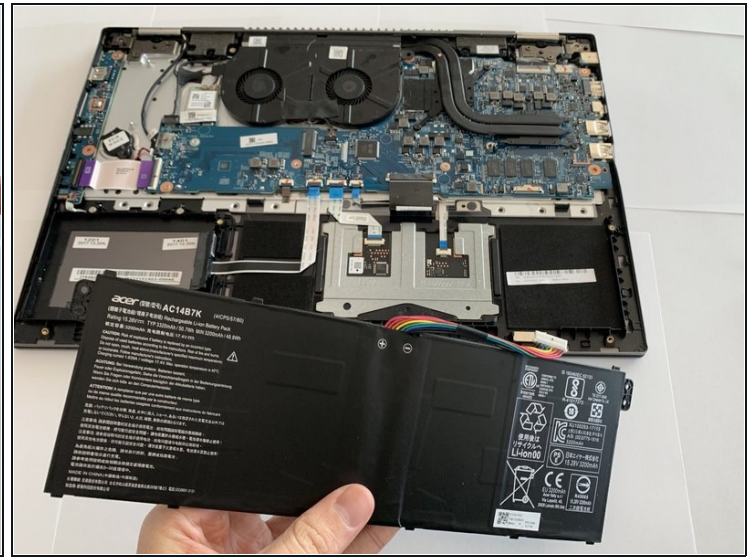
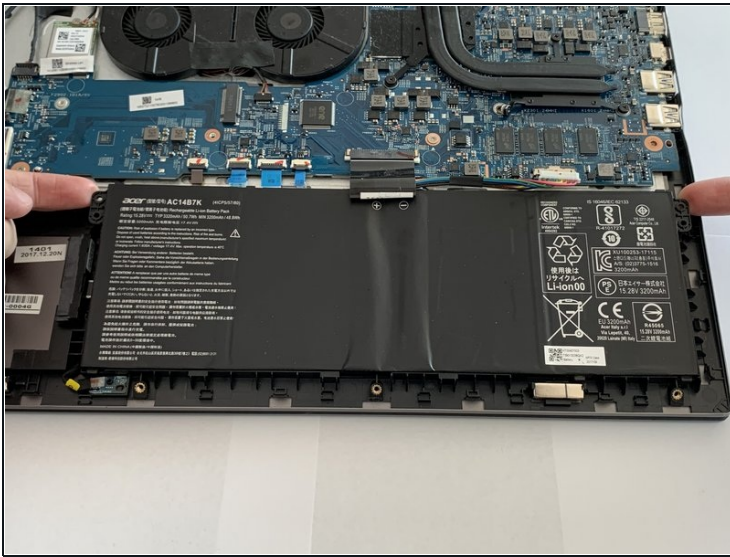
- Grip the battery cable on both sides with your fingertips and gently pull it away from the port.
- ① If needed, use the plastic opening tool to remove the cord from its port.

Step 4



- Remove the two 3.5 mm screws that secure the battery using a Phillips #00 screwdriver (PH00 bit).

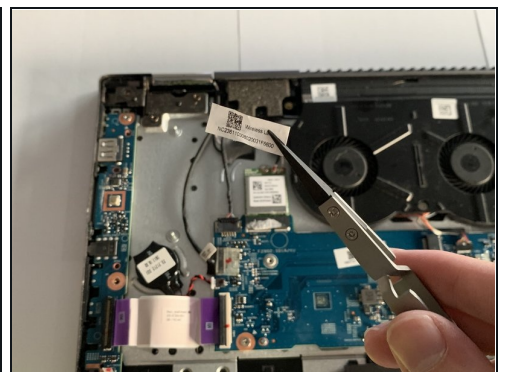
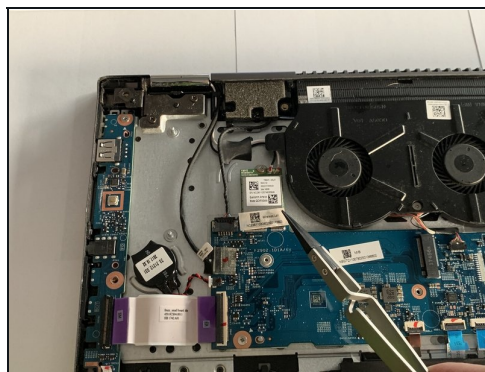
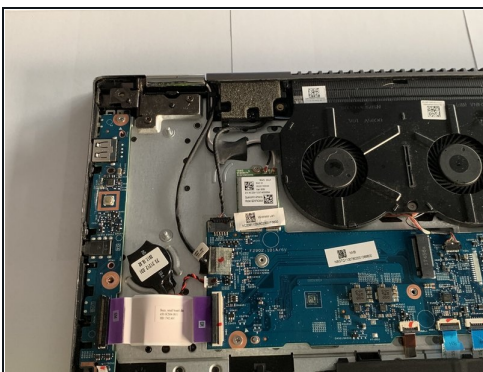
Step 5



- Carefully place your fingers under the plastic lip where the screws were removed.
- Lift upwards to remove the battery.

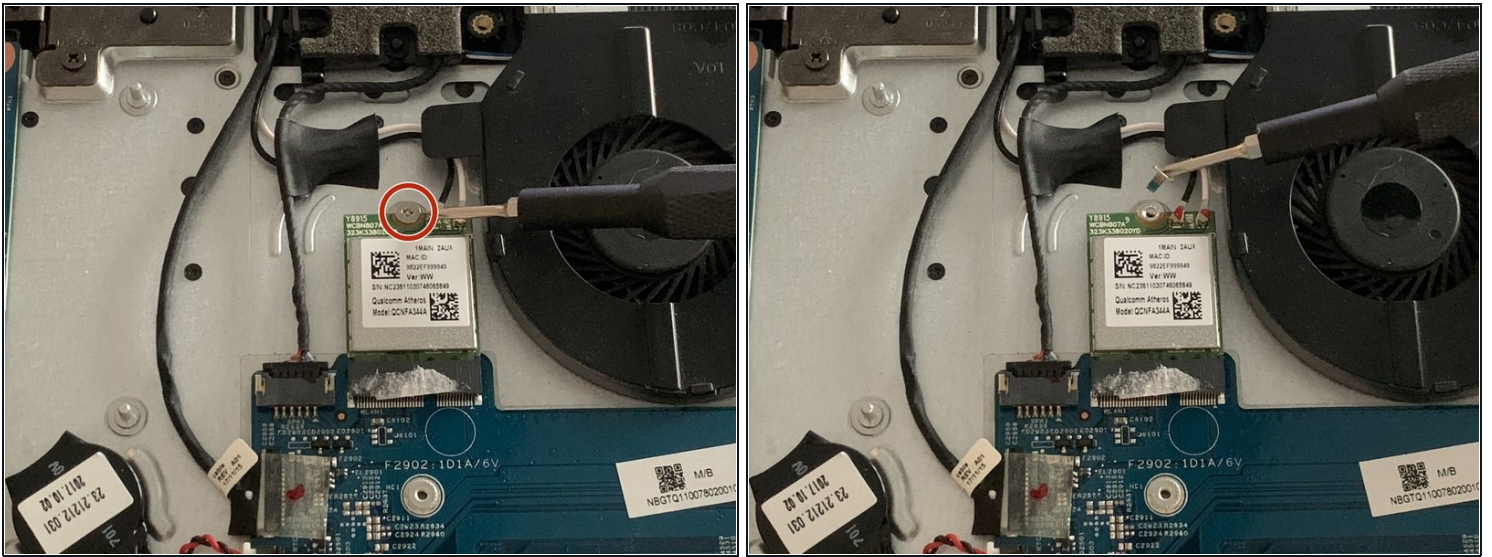
⚠ Do not bend or puncture the lithium ion battery as it poses a fire hazard.

Step 6 — Wireless (WiFi) Card



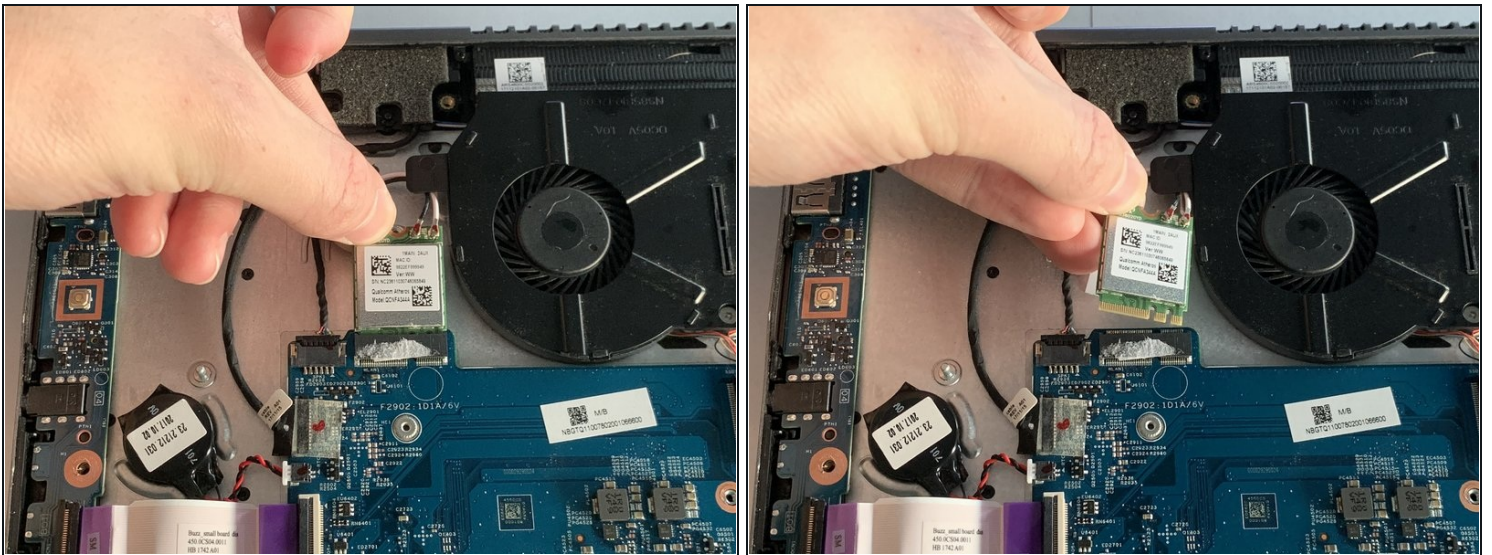
- Using tweezers, remove the sticker that covers the connection between the wireless card and motherboard.

Step 7



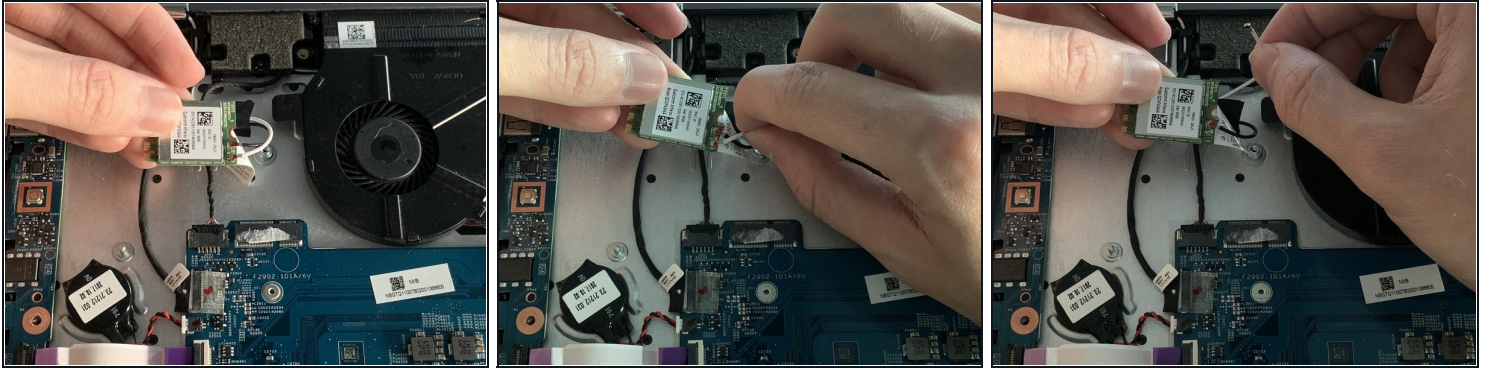
- Remove the 6.5 mm screw that secures the wireless card using a Phillips #00 screwdriver (PH00 bit).

Step 8



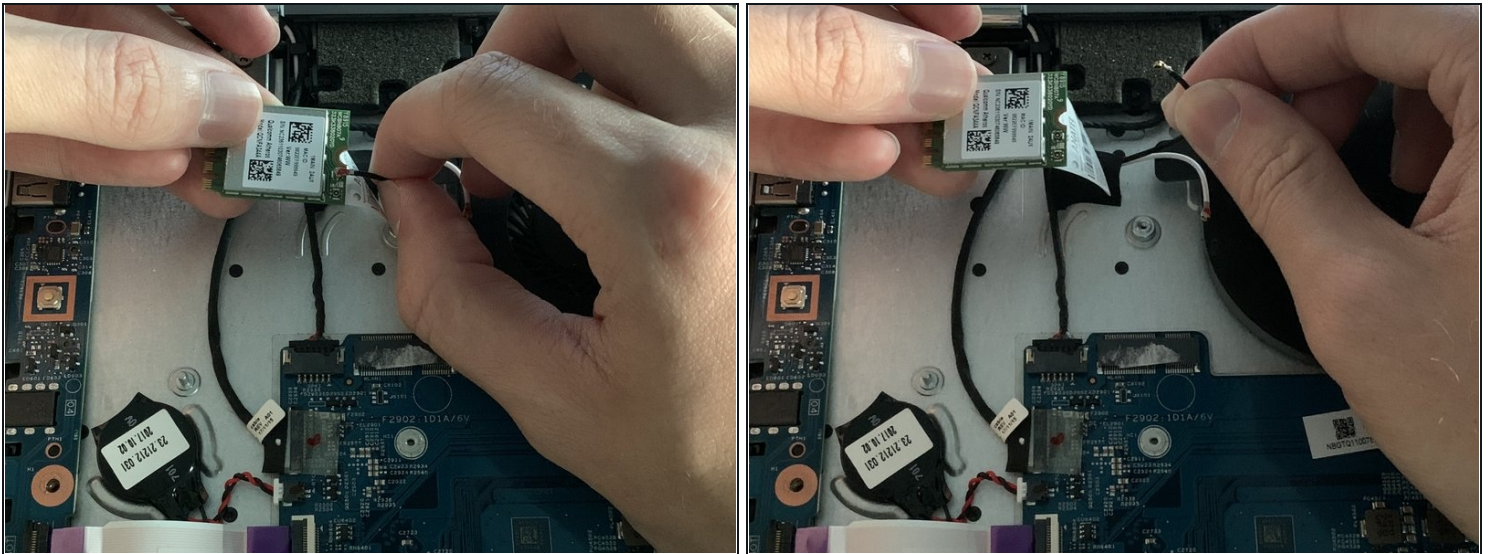
- Gently pull the wireless card away from the motherboard.

Step 9



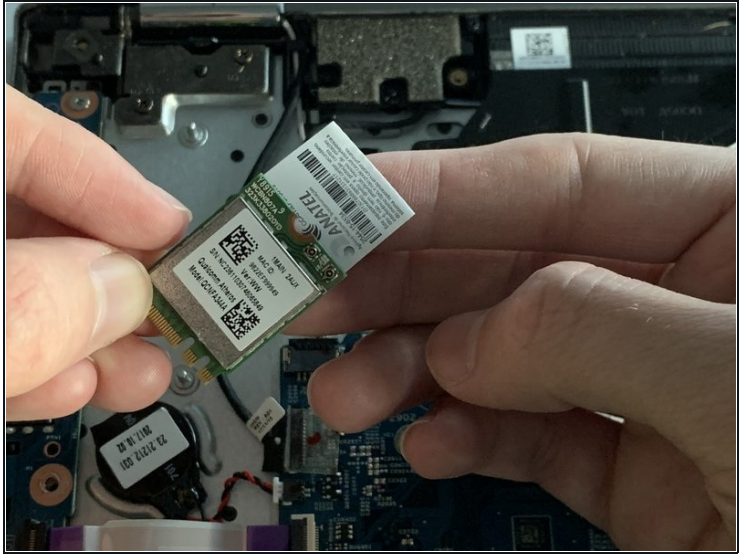
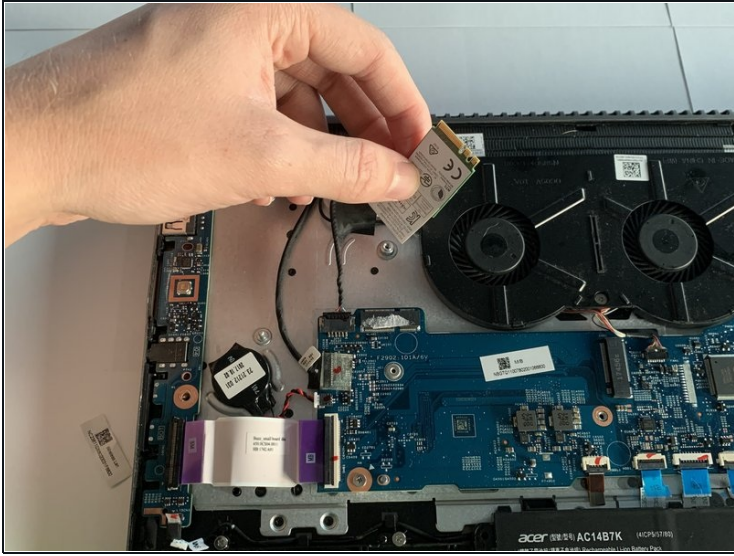
- Using your fingers, carefully pull the white wire upwards, removing it from the terminal of the wireless card.

Step 10



- Repeat the previous step but this time for the black wire.

Step 11



- Remove the wireless (WiFi) card from the laptop.

To reassemble your device, follow these instructions in reverse order.