



Acer Spin 5 SP513-51-57TP Solid State Drive Replacement

The Solid State Drive is used to store data,...

Written By: Anthony Vansell

A yellow rectangular sticky note is placed on a light gray surface. The words 'Solid State Drive' are handwritten in black ink on the note, arranged in two lines: 'Solid State' on the top line and 'Drive' on the bottom line.

Solid State
Drive

INTRODUCTION

The Solid State Drive is used to store data, including pictures, music, videos, text, documents and files created or downloaded. It is also responsible for storing operating systems and software programs. If your computer is making strange clicking or humming noises, continually crashing programs or showing error messages you need to replace your Solid State Drive. This guide will show you how to replace your hard drive.



TOOLS:

[iFixit Opening Tool](#) (1)

[Phillips #1 Screwdriver](#) (1)



PARTS:

[Crucial P3 NVMe PCIe M.2 2280SS SSD](#) (1)

[Crucial P3 Plus NVMe PCIe M.2 2280SS SSD](#) (1)

[Crucial P5 Plus PCIe M.2 2280SS SSD](#) (1)

Step 1 — Battery



- Flip your laptop over so that the model sticker is facing upward towards the ceiling.

⚠ Make sure your computer is turned off before starting to avoid getting shocked.

Step 2



- Use a Phillips #1 screwdriver to remove the thirteen 6.5mm screws that secure the back cover.

Step 3



- Use a plastic opening tool to gently separate the back cover from the laptop. A snapping sound will be heard as a signal that the clips are being disengaged.

⚠ Do not use any metal tools to pry open the device.

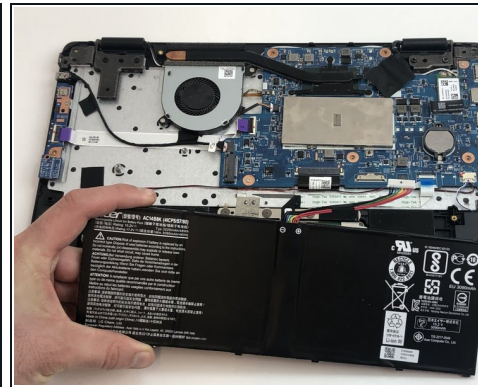
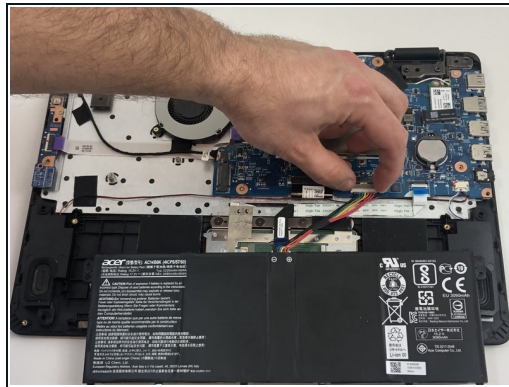
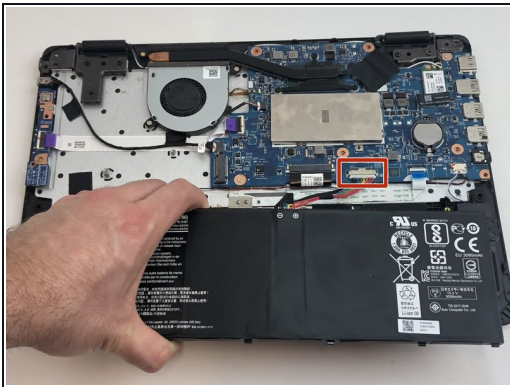
- ① It is recommended that you start from one corner and run the tool along the edges of your laptop from corner to corner for a safe removal.

Step 4



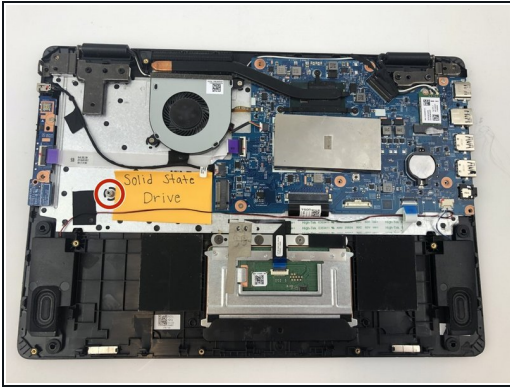
- Use a Phillips #1 screwdriver to remove two 4 mm screws that secure the battery.

Step 5



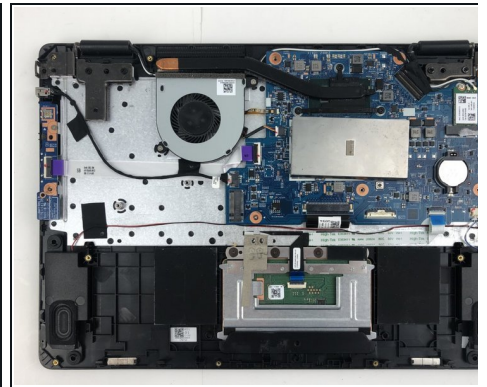
- Use your hand to carefully pull out the wiring harness from its port that is located between the battery and the motherboard.
- Remove the battery from the case.

Step 6 — Solid State Drive



- Using a Phillips #1 screwdriver, remove the one 4mm screw that secures the Solid State Drive.

Step 7



- Use your hand to pull out the Solid State Drive from the motherboard.
- You will be pulling the solid state drive out to the left, as it will be connected to the port on the motherboard on its right side. This is opposite the direction that the pictures depict it.

To reassemble your device, follow these instructions in reverse order.