



Etón Scorpion Teardown

A teardown of the Etón Scorpion

Written By: Levi G



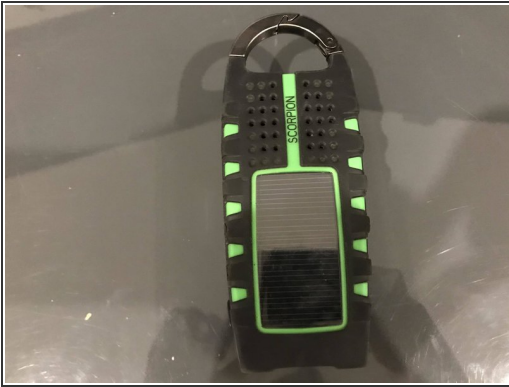
**TOOLS:**

- [Phillips #0 Screwdriver](#) (1)

**PARTS:**

- [Ni-MH 3*2/3AAA 3.6V 350MAH Battery](#) (1)

Step 1 — Etón Scorpion Teardown



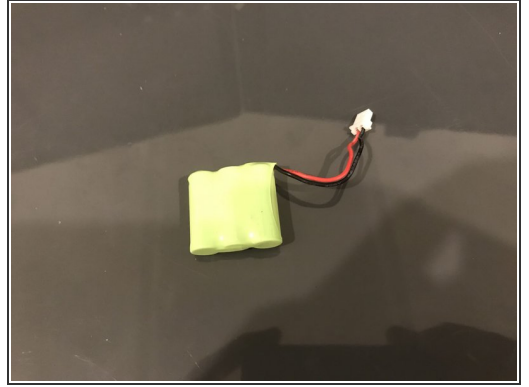
- The front of the device has a solar panel and a speaker grill.
- The only obvious screws are the battery cover and the back.

Step 2



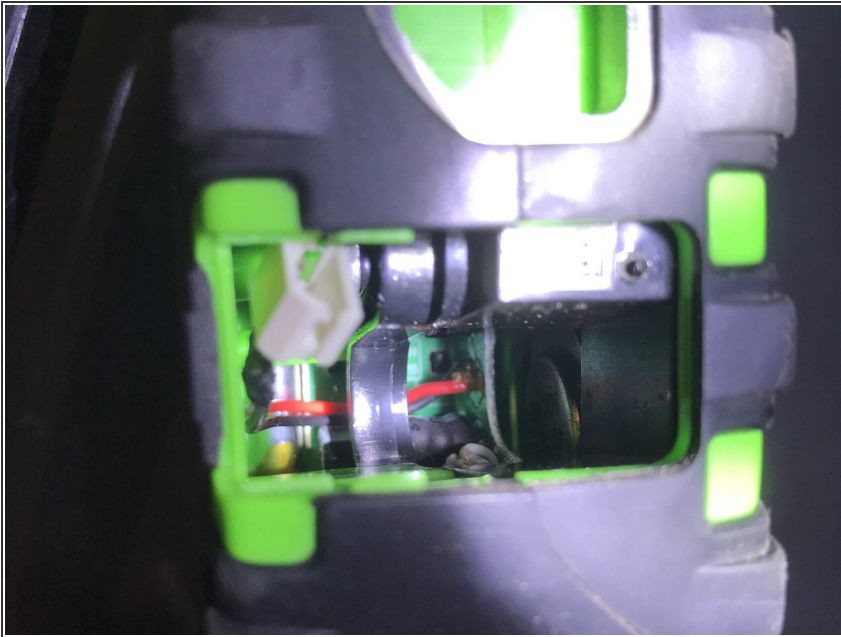
- Removing the battery cover reveals an **easily** user-replaceable battery (hooray!)
- It takes a single Phillips head screwdriver

Step 3



- Removing the battery shows a **standard form factor**.
- If you're looking for a replacement, [I've got you](#).

Step 4



- Peeking inside with a flashlight and camera, we can see some internals.
- Let's get inside!

Step 5



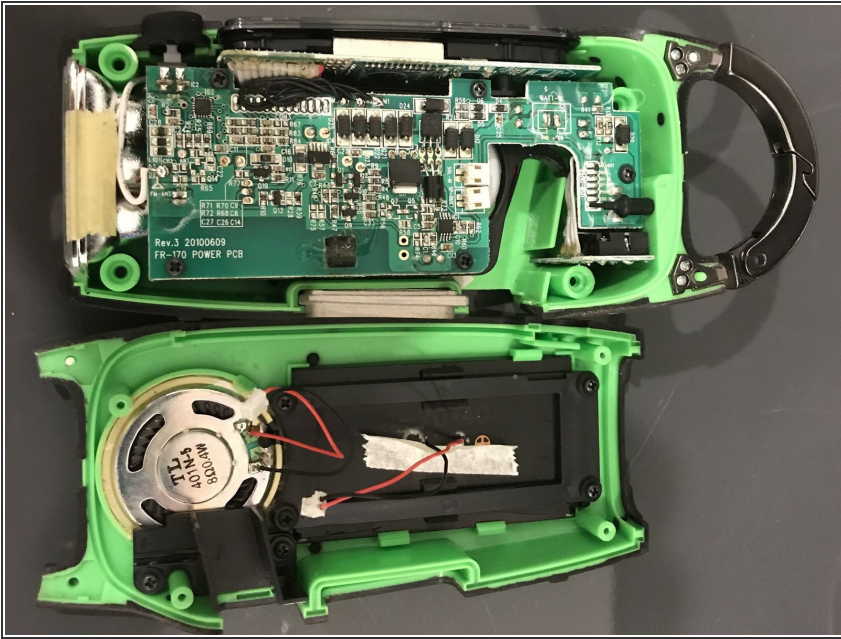
- Removing the 4 screws and pulling apart the 2 halves worked
- Let's look inside!

Step 6



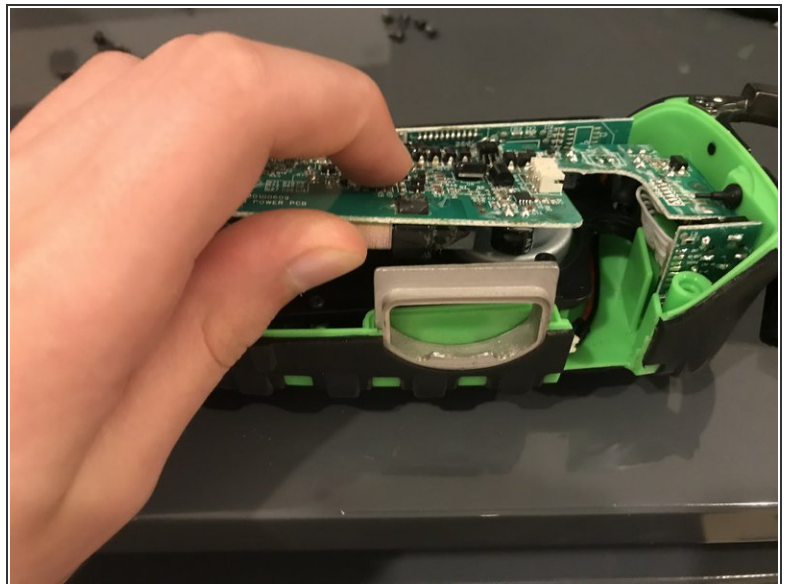
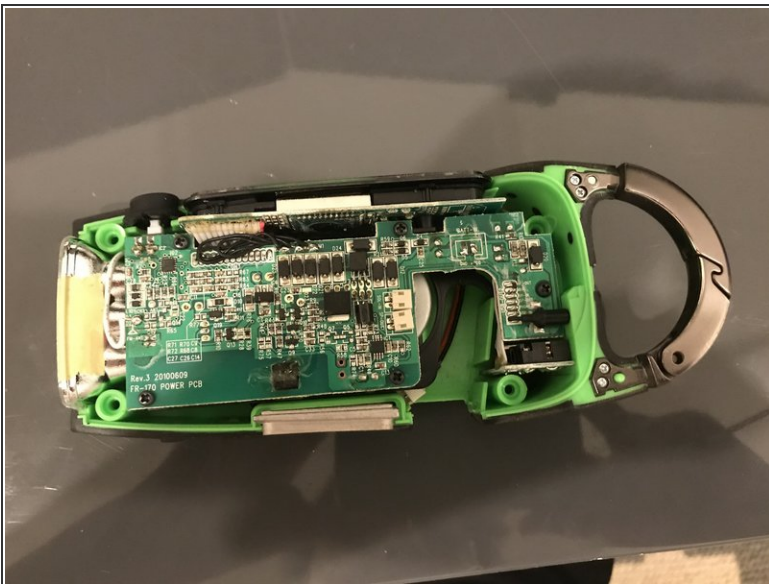
- immediately, we can see the speaker and solar panel.
- I spot user-removable plugs. Horray!

Step 7



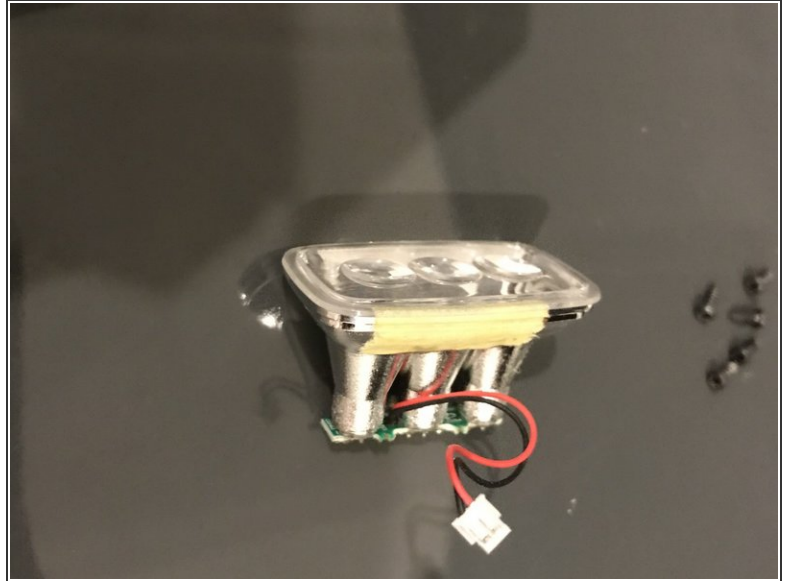
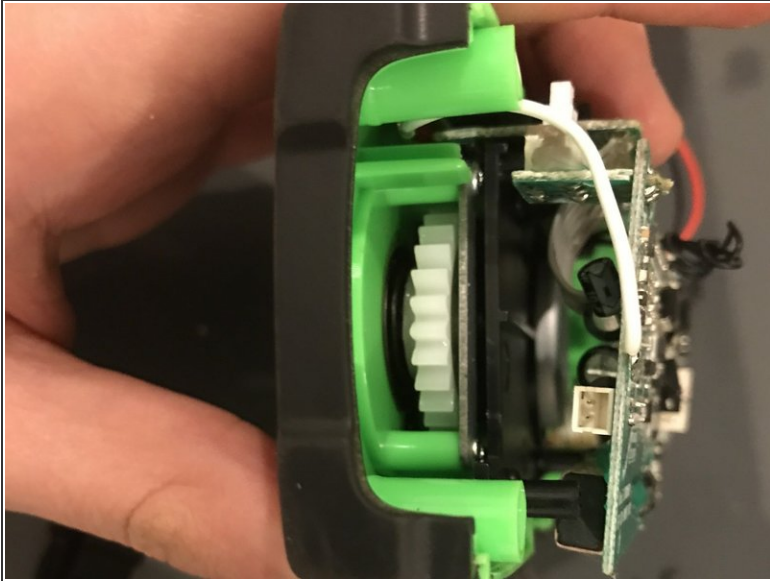
- After pulling away the cables from the 2 plugs, we are free to keep tearing down!

Step 8



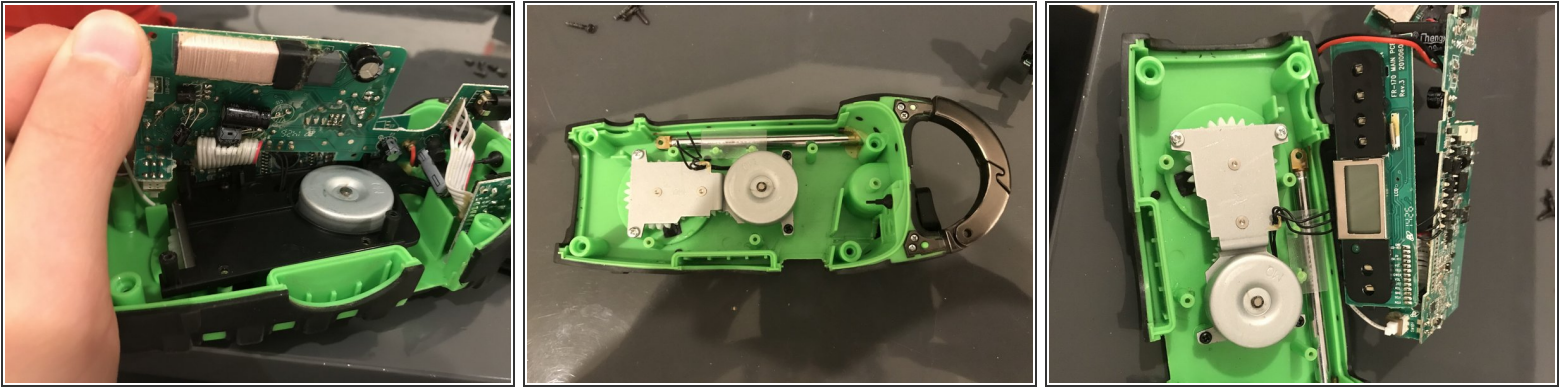
- There are 5 Phillips head screws securing the power board in place. Removing them allows some give to peek inside.

Step 9



- The flashlight module is also removable, with a single jack holding the cable in place.
- Once again, **a win for repairability**.

Step 10



- Pulling the power board away harder allows it to bend
- here, we can see the underside, and how it **REALLY** works.
- We can also see the hand crank generator on the bottom
- to the right, is the USB and audio board. There is a ribbon cable connecting it, and it isn't user removable. :(
- The power board and the main board are also user-inseparable :(

Step 11 — Conclusion



- To wrap it up, we saw examples of both good and bad repairability, as all the circuit board are inseparable, but the battery and other components that may break more easily are connected by a standard port.
- All the screws, no matter how big or small, were standard Phillips Head, and not some weird GameBit screw. ([Looking at you, Nintendo!](#))
- It's significantly better than most devices out there, but not perfect. It's great for most consumers, unless you want to replace a specific circuit board.