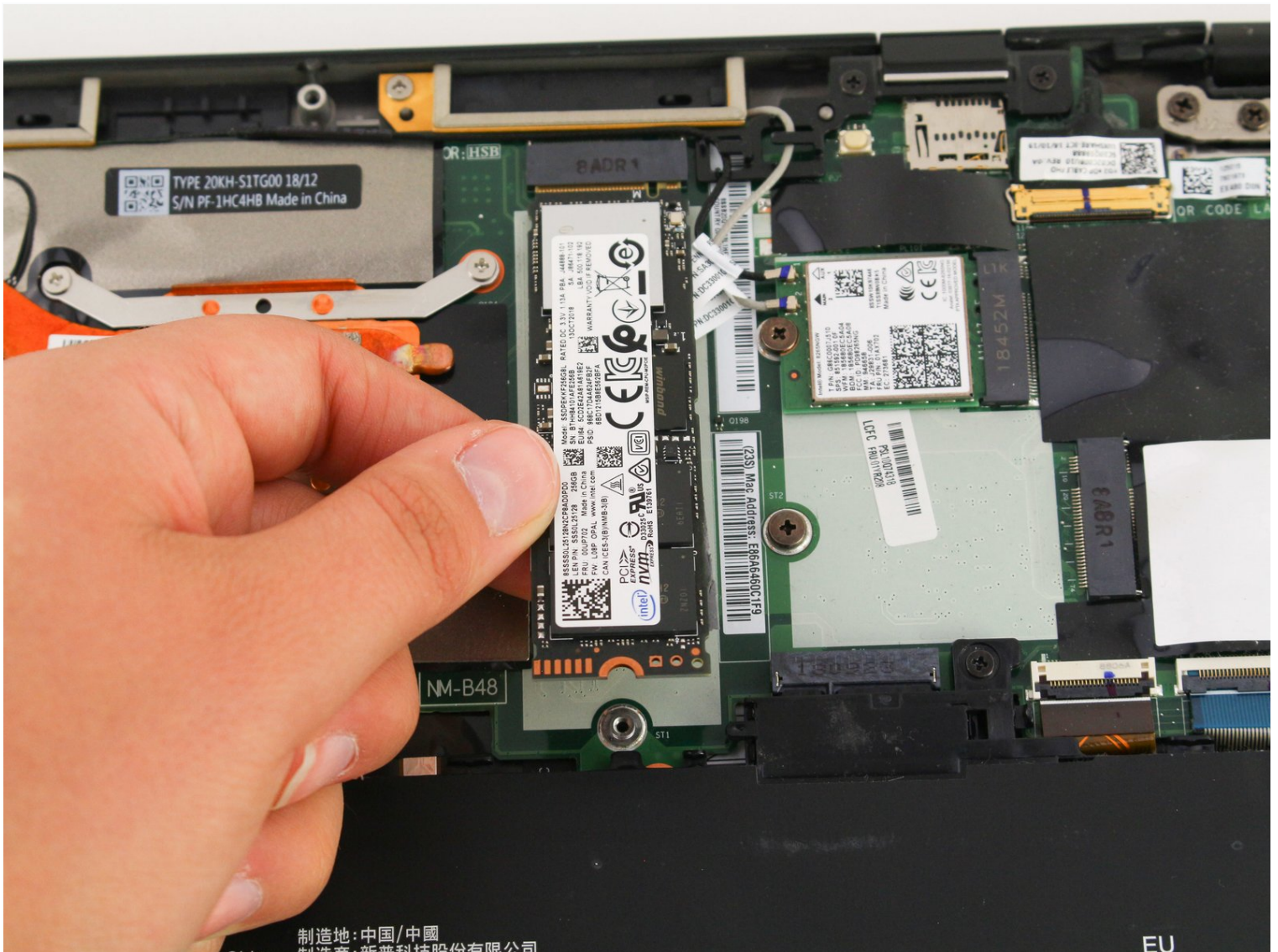




Lenovo ThinkPad X1 Carbon 6th Gen SSD Replacement

This guide will cover how to remove and replace...

Written By: Michael Megna



INTRODUCTION

This guide will cover how to remove and replace the solid-state drive (SSD) in the Lenovo ThinkPad X1 Carbon 6th Gen. This may be necessary if your SSD is faulty, which may prevent the computer from booting up. If you are having trouble with your computer, consult our [troubleshooting page](#) before replacing the SSD. Try powering on the device by holding the power button down for a few seconds while connected to a power source, and review our [battery troubleshooting section](#) to be sure that the SSD is at fault. Before beginning, be sure to power off your laptop and disconnect it from any power source.

TOOLS:

Phillips #0 Screwdriver (1)
iFixit Opening Tool (1)

PARTS:

Crucial P3 NVMe PCIe M.2 2280SS SSD (1)
Crucial P3 Plus NVMe PCIe M.2 2280SS SSD (1)
Crucial P5 Plus PCIe M.2 2280SS SSD (1)

Step 1 — Back Cover



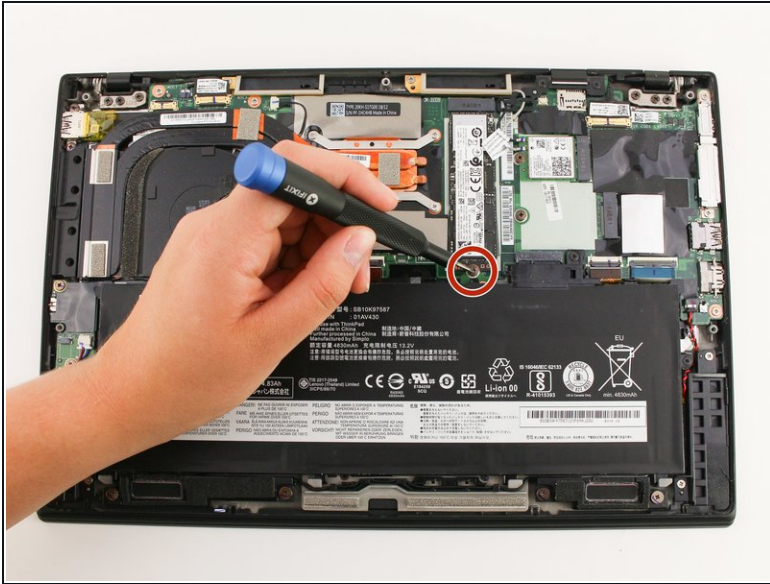
- Use a Phillips #0 screwdriver to unscrew the five screws that secure the back cover to the laptop.
- ⓘ The screws do not completely come off from the back cover. Loosen until the screws are completely loose.

Step 2



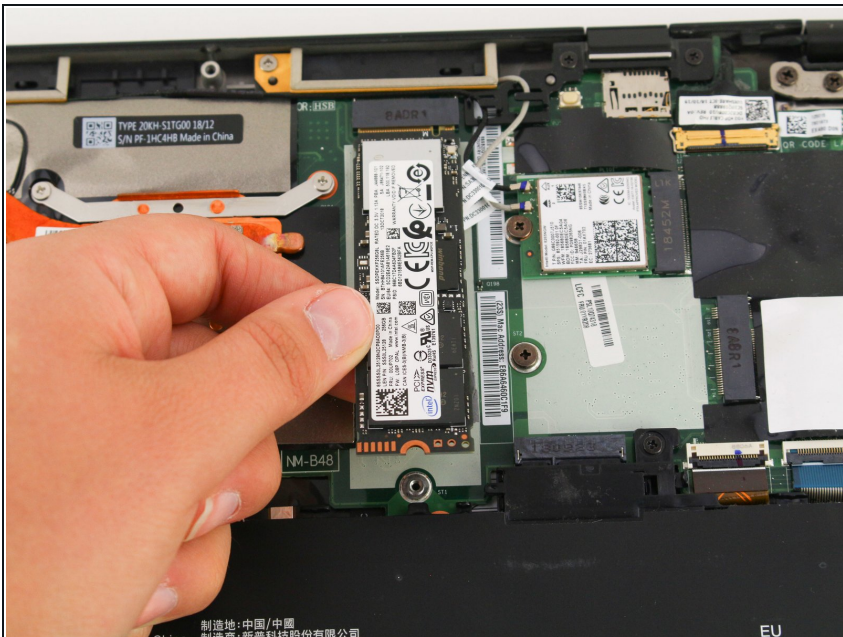
- Use a Jimmy to lift the cover directly up off of the locating pins.
- ① Though a metal opening tool is shown in the image, we recommend using plastic opening tools to minimize any cosmetic damage.
- Remove the back cover.
- ① If you encounter resistance when lifting the cover, revisit the screws to see if any of them are still threaded on to the device.

Step 3 — SSD



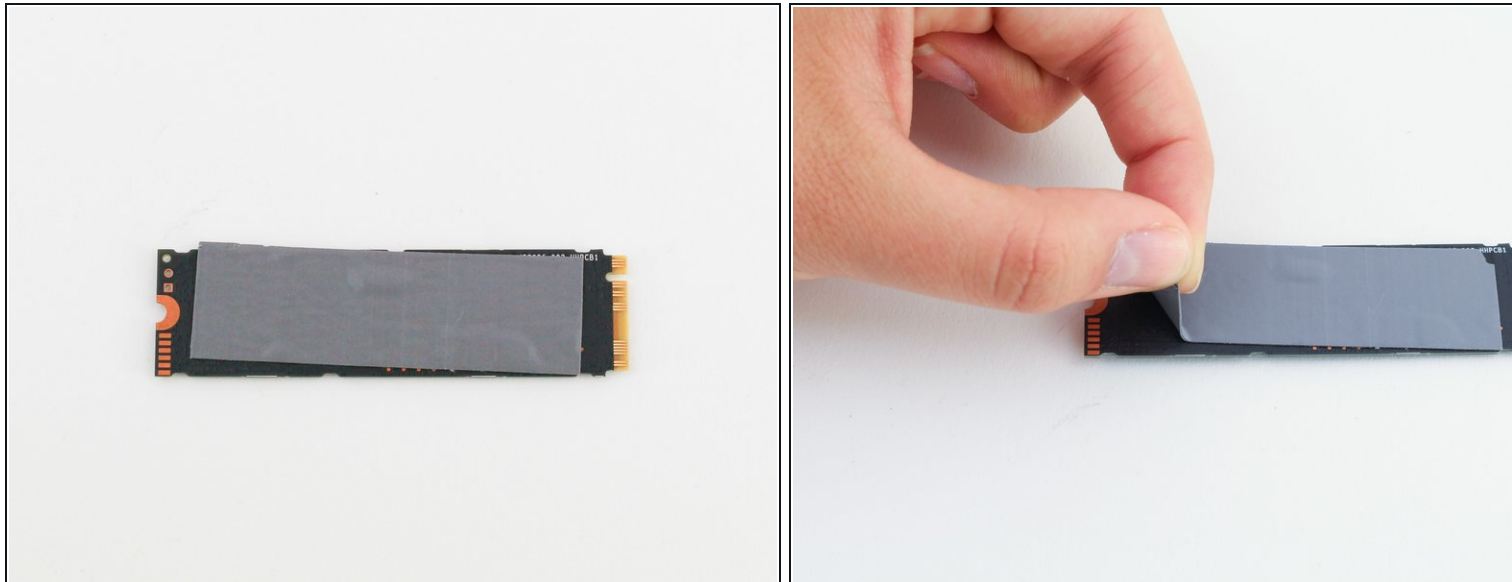
- Use a Phillips #0 screwdriver to remove the single screw that secures the SSD to the motherboard.

Step 4



- Carefully remove the SSD by lifting it and pulling it out of the pins towards the battery of the laptop.

Step 5



- Carefully peel the thermal pad off of the back of the SSD.
- ⓘ If the thermal pad is in good shape, you can reuse it by applying it to the replacement SSD.

To reassemble your device, follow these instructions in reverse order.