



MacBook Pro 15" Retina Display Mid 2015 Teardown

Written By: Terry Salt



TOOLS:

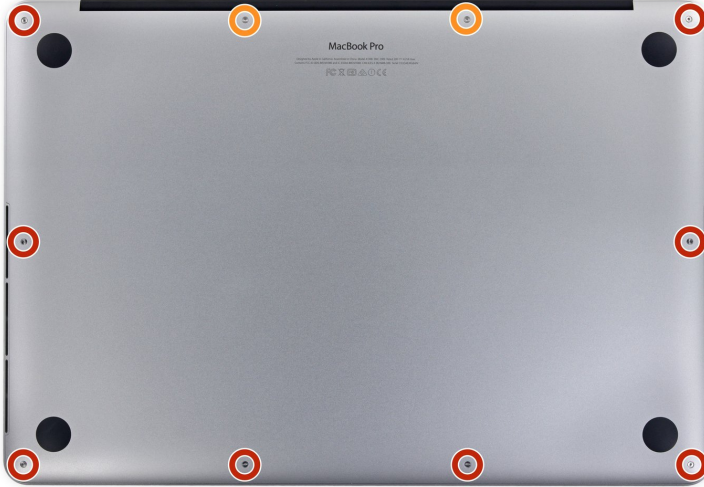
- [P5 Pentalobe Screwdriver Retina MacBook Pro and Air](#) (1)
- [Spudger](#) (1)
- [T5 Torx Screwdriver](#) (1)
- [MacBook Pro and Air 5-Point Pentalobe Screwdriver](#) (1)



PARTS:

- [MacBook Pro 15" Retina \(Late 2013-Mid 2015\) Lower Case](#) (1)
- [MacBook Pro Retina \(2012-2015\) Lower Case Screw Set](#) (1)
- [OWC Aura Pro X2 SSD](#) (1)

Step 1 — Lower Case



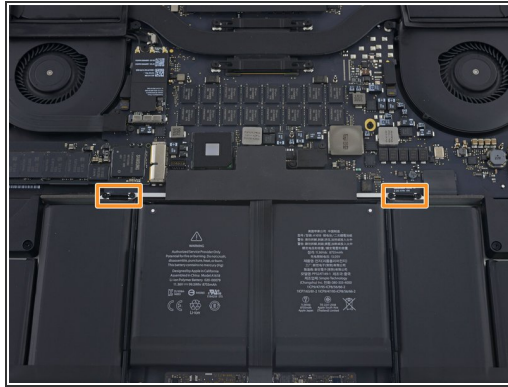
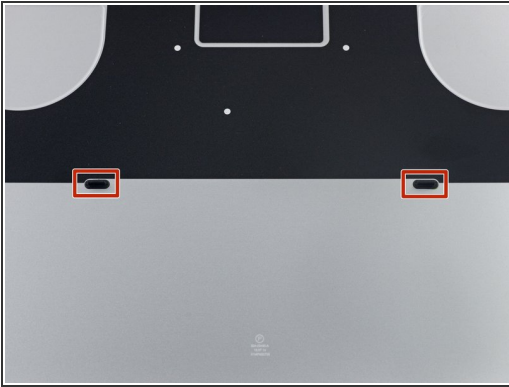
- Remove the following P5 pentalobe screws securing the lower case to the MacBook Pro:
 - Eight 3.1 mm
 - Two 2.3 mm



Step 2



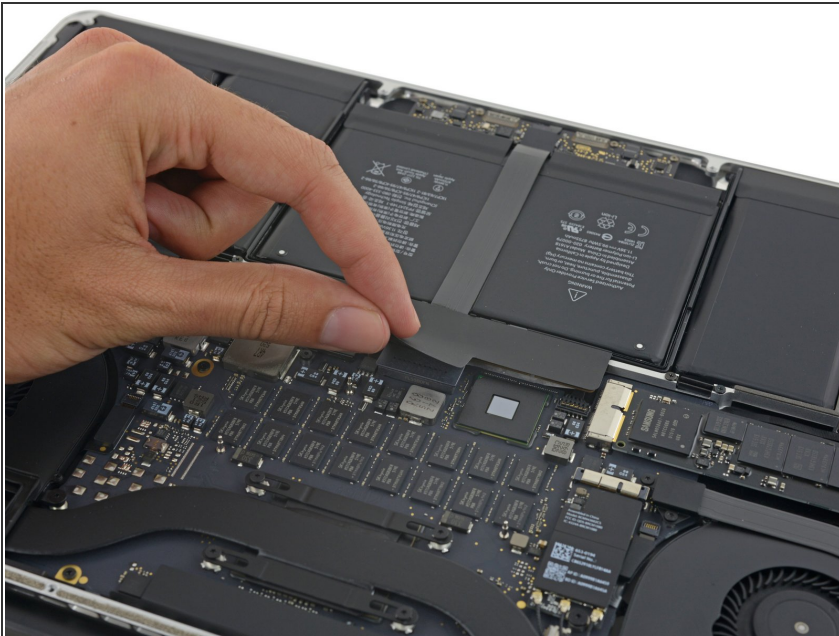
- Lifting from the edge nearest the clutch cover, lift the lower case off the MacBook Pro.

Step 3



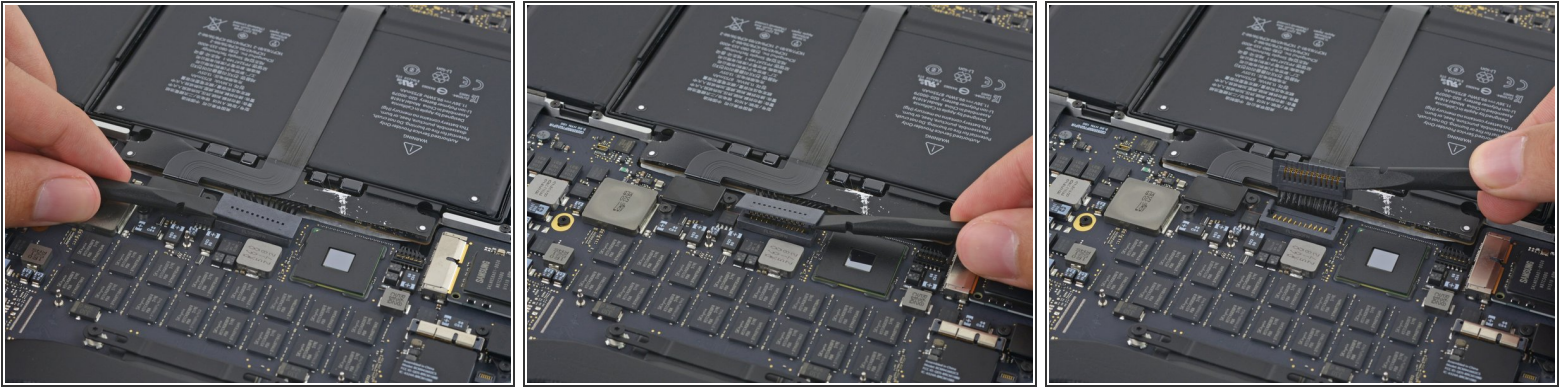
-  The lower case has two plastic pegs (red) that fit into plastic clips in the upper case (orange).
-  During reassembly, gently push down the center of the lower case to reattach the case to its two plastic clips.

Step 4 — Battery Connector



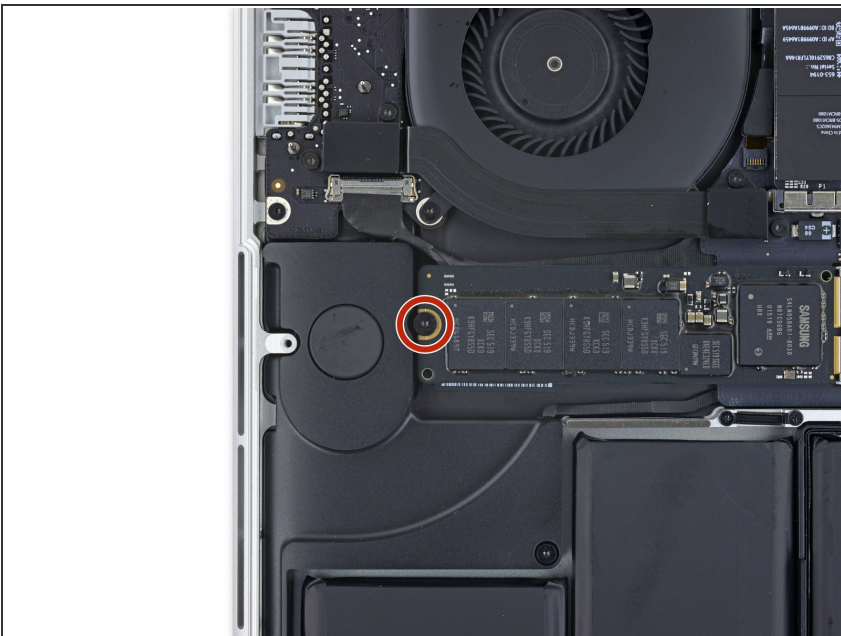
- Peel back the sticker covering the battery connector.

Step 5



- Gently lift each side of the battery connector to pry the connector out of its socket on the logic board.
- Bend the connector back toward the battery, ensuring that the battery connector doesn't accidentally make contact with the logic board.

Step 6 — SSD



- Remove the single 2.9 mm T5 Torx screw securing the SSD to the logic board.

Step 7



- Lift the end of the SSD up enough to pass over the speaker directly behind it.
⚠ Do not lift the SSD too high, or you could damage the contacts or socket.
- Pull the SSD straight out of its socket on the logic board.