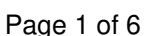


Written By: James Wasielewski



INTRODUCTION

If your Acer Spin 5 SP515-51GN-807G laptop is failing to power on or you are experiencing symptoms of an old battery such as faster than normal discharge, use this guide to replace the battery.

It is important to have a healthy, functioning battery to ensure your laptop runs efficiently. If you notice after a long period of time that your [laptop battery is draining faster than normal](#), you may want to consider replacing the battery.

When replacing a battery it is important to take several precautions. Make sure to avoid puncturing the battery, as that can cause a fire. Also, make sure to take appropriate precautions with a [swollen battery](#). Always remember to power down the device before beginning replacement.

After replacement, please make sure to follow proper procedures when [disposing of the battery](#).



TOOLS:

[iFixit Opening Tool](#) (1)

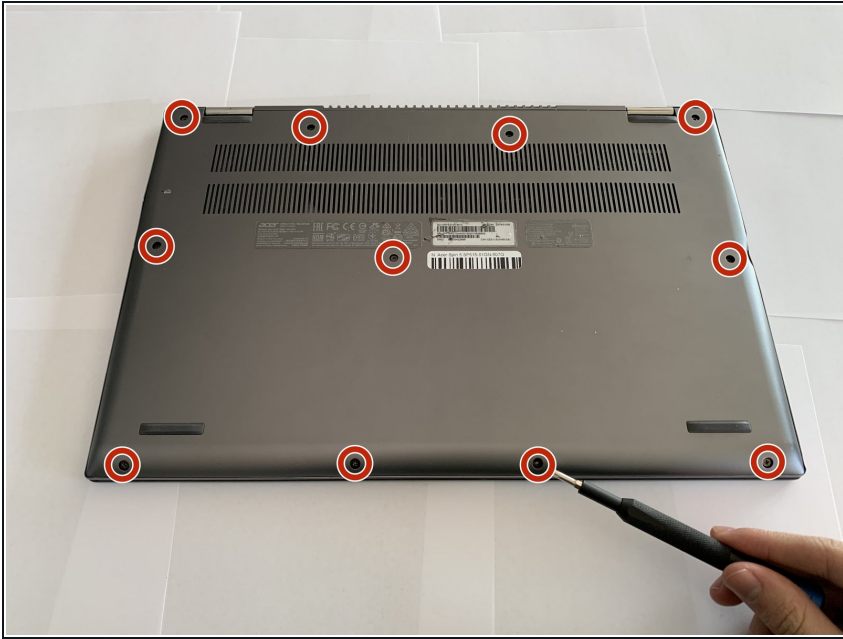
[Magnetic Project Mat](#) (1)

[Phillips #1 Screwdriver](#) (1)

[Phillips #00 Screwdriver](#) (1)

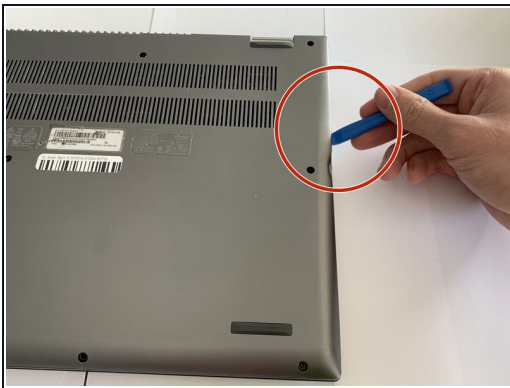
[Tweezers](#) (1)

Step 1 — Back Cover



- Remove the eleven 6.5 mm screws that secure the back case using a Phillips #1 screwdriver.

Step 2



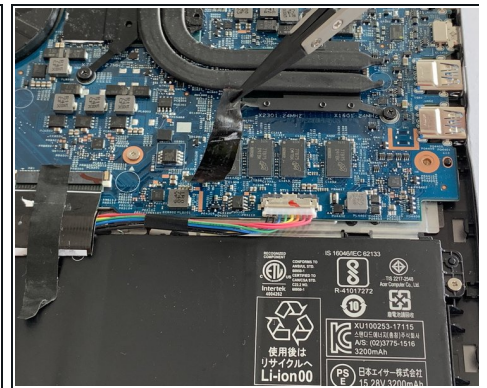
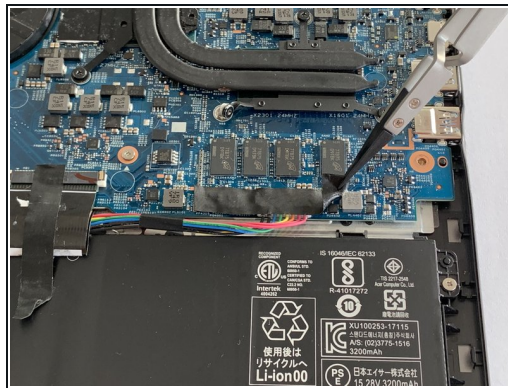
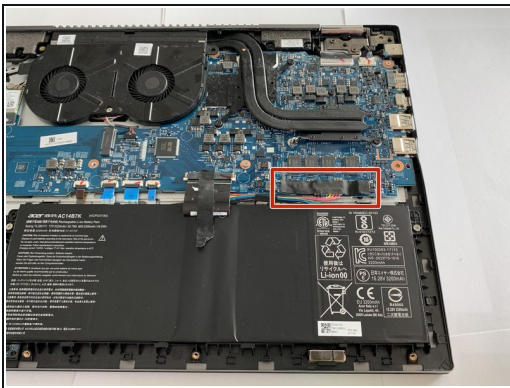
- Use a plastic opening tool to gently pry open the back cover.

Step 3



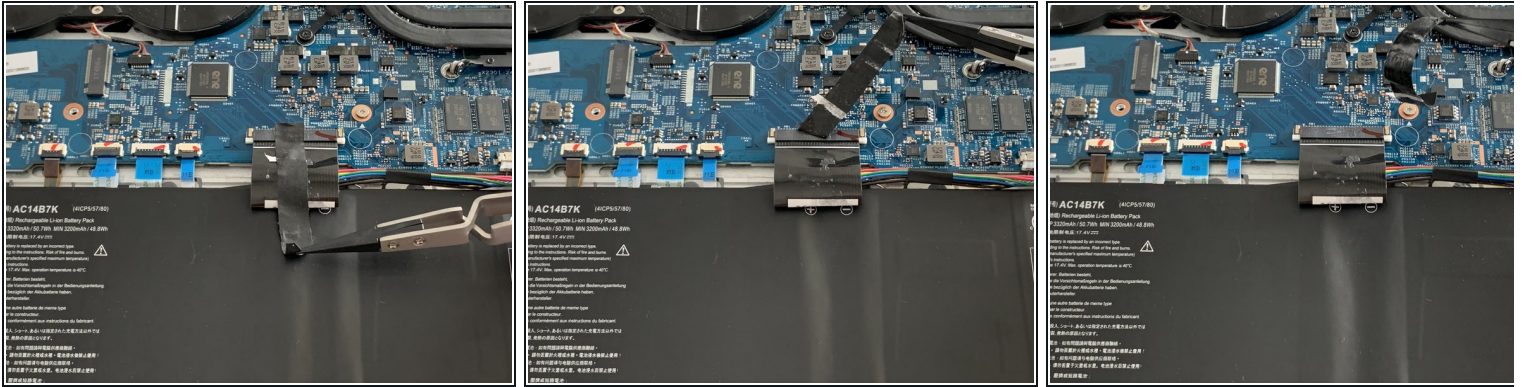
- Gently remove the back cover from the device.

Step 4 — Battery



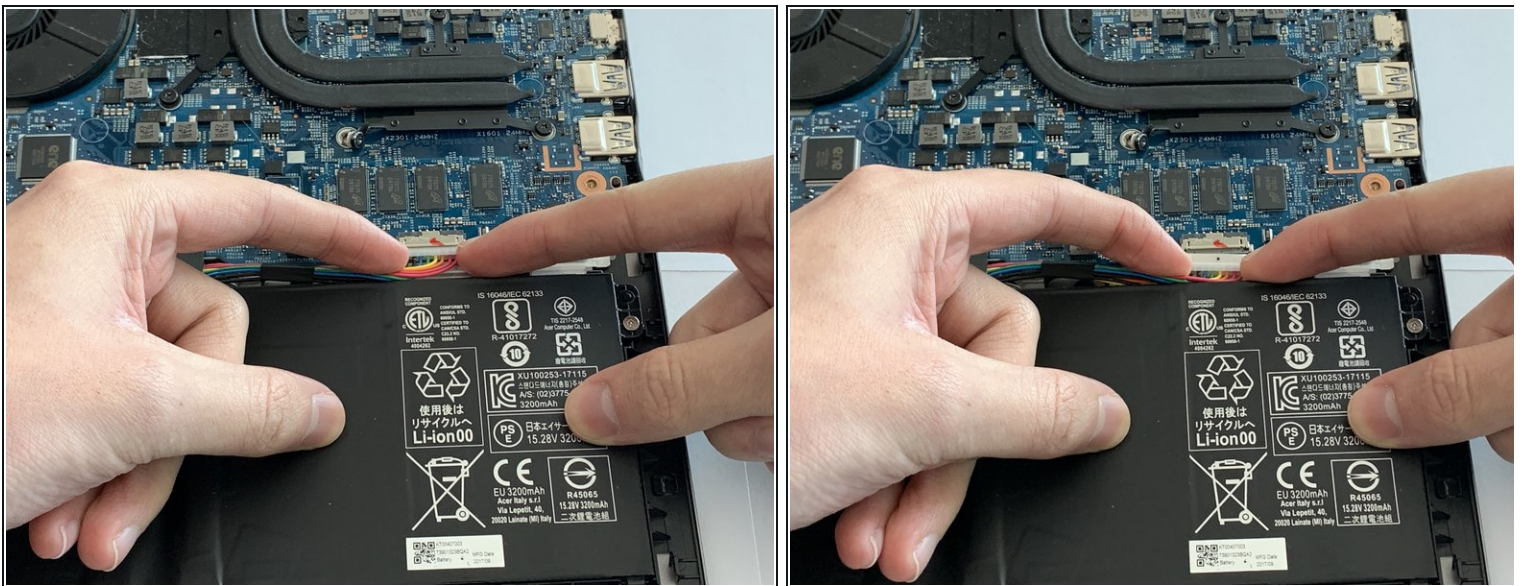
- Using tweezers, remove the piece of black tape over the battery cable connector.

Step 5



- Remove the piece of black tape that covers the battery.

Step 6



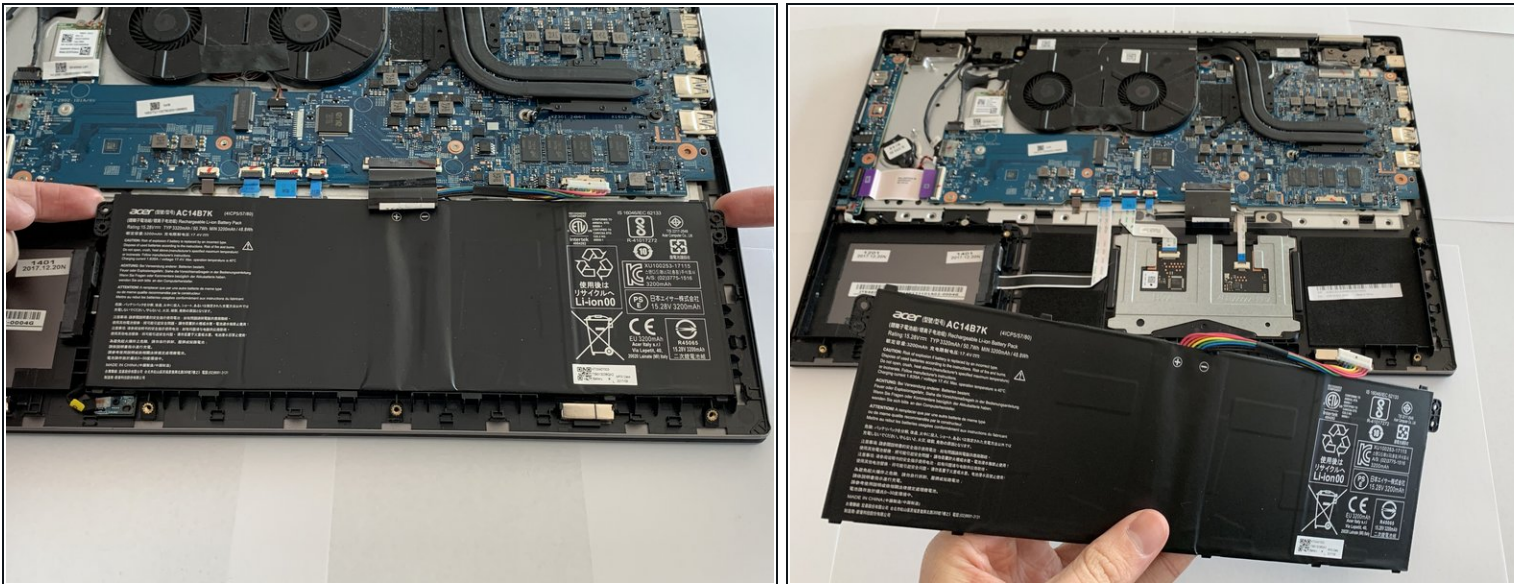
- Grip the battery cable on both sides with your fingertips and gently pull it away from the port.
- ❗ If needed, use the plastic opening tool to remove the cord from its port.

Step 7



- Remove the two 3.5 mm screws that secure the battery using a Phillips #00 screwdriver (PH00 bit).

Step 8



- Carefully place your fingers under the plastic lip where the screws were removed.
- Lift upwards to remove the battery.

⚠ Do not bend or puncture the lithium ion battery as it poses a fire hazard.

To reassemble your device, follow these instructions in reverse order.