



Corded Dexter Jigsaw 750 Watts Blade Holder Replacement

Written By: Céline Chemineau

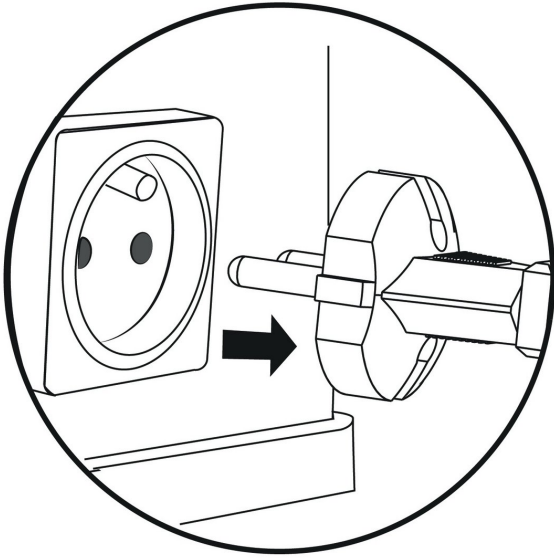





TOOLS:

- [New Item](#) (1)
 - [New Item](#) (1)
 - [New Item](#) (1)
-

Step 1 — Unplug



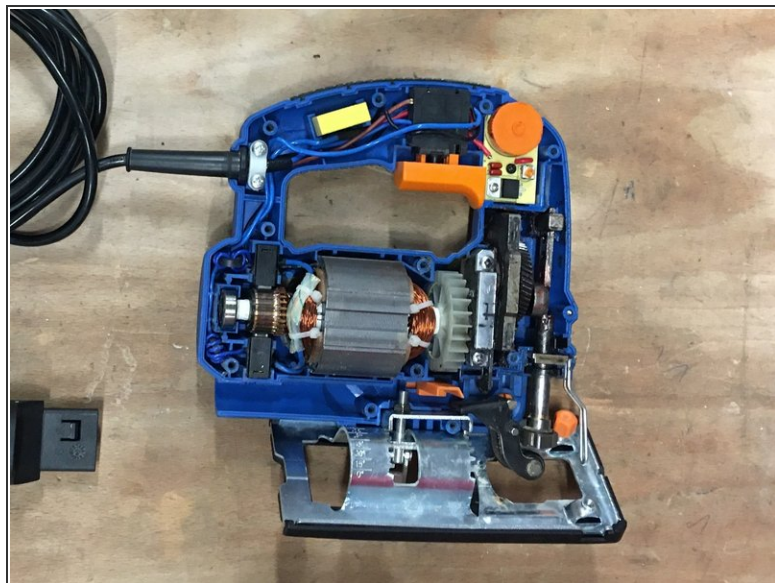
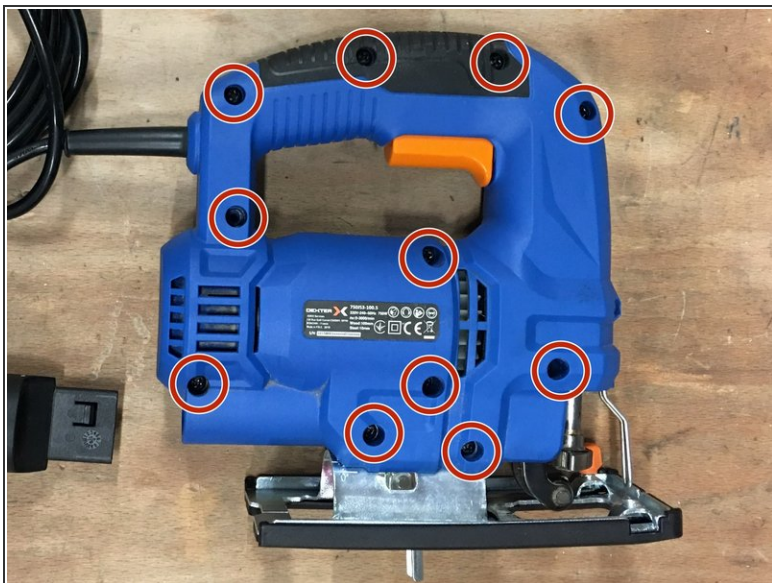
 Before starting, remember to unplug the device.

Step 2



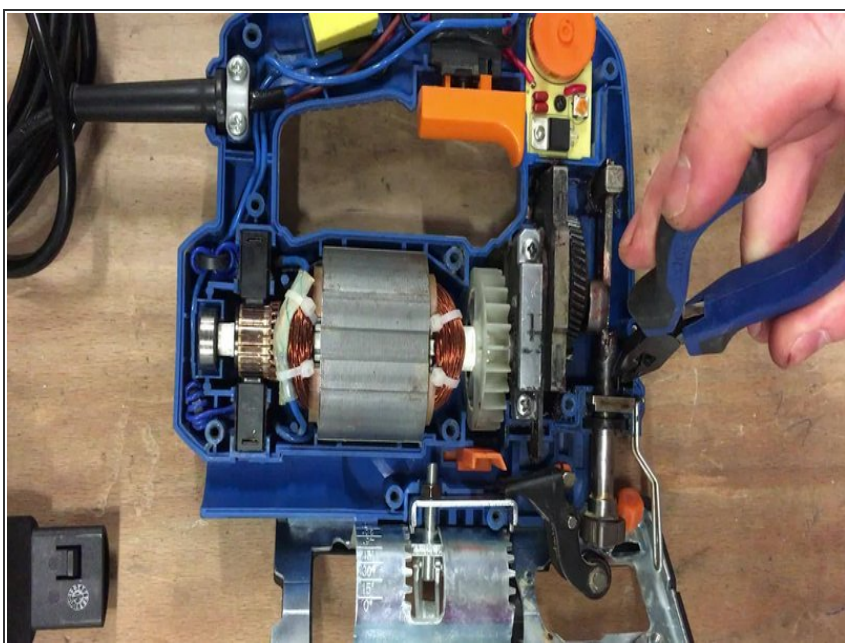
- Remove the vacuum hose adapter at the back of the device.

Step 3



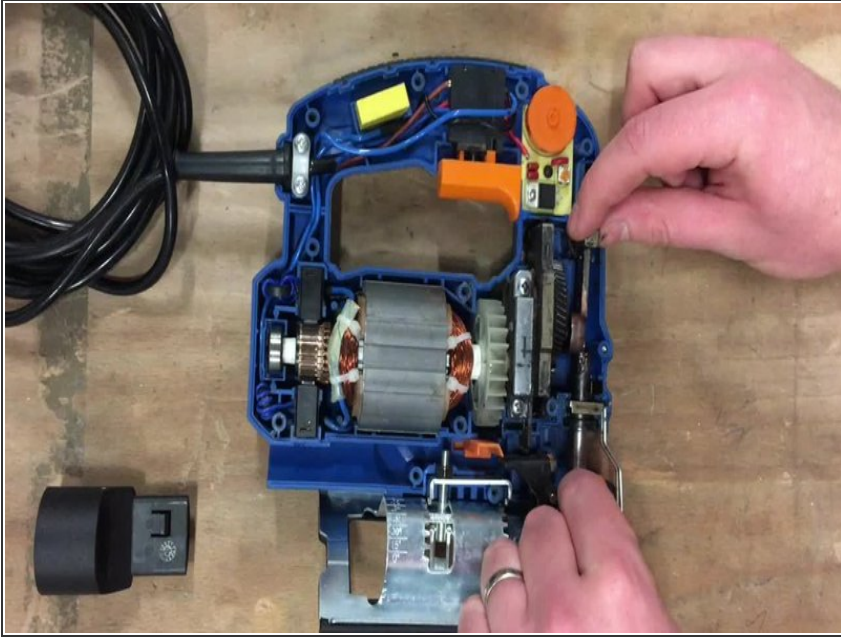
- With the help of a screwdriver, unscrew and open the device.
- Use the lever to unlock the cover.

Step 4



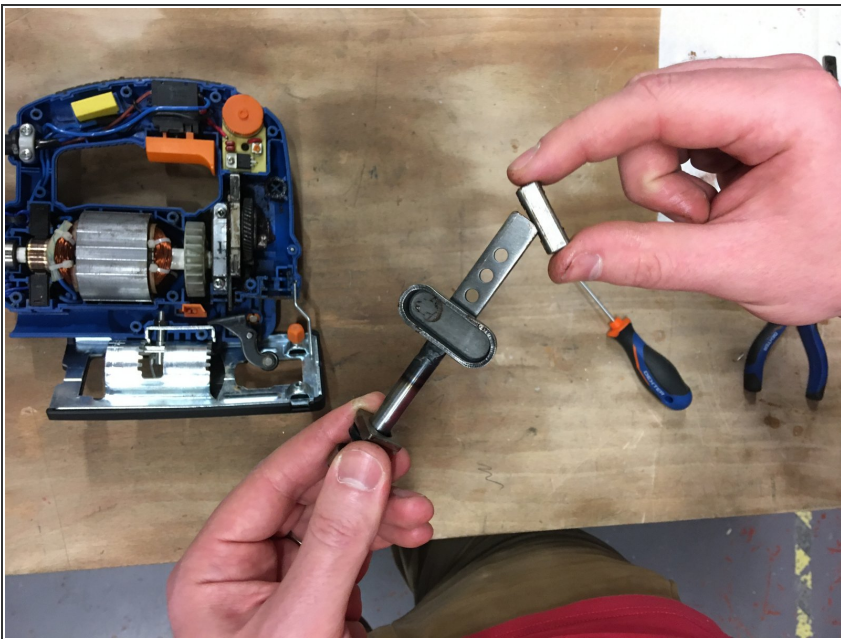
- Using pliers, remove the clip beside the blade holder.

Step 5



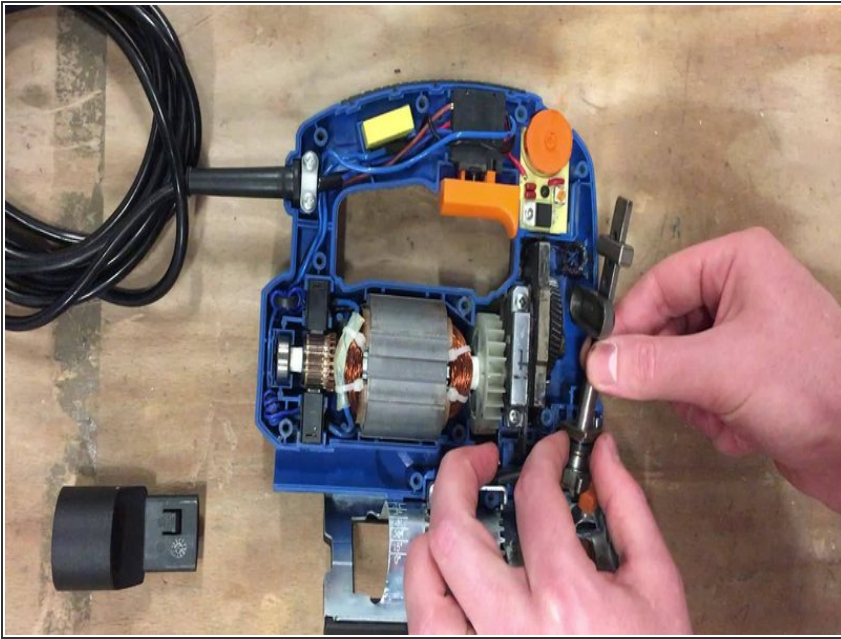
- Take off the blade holder, then raise the slide located at the end of the holder.

Step 6



- First, put the slide onto the new blade bracket.

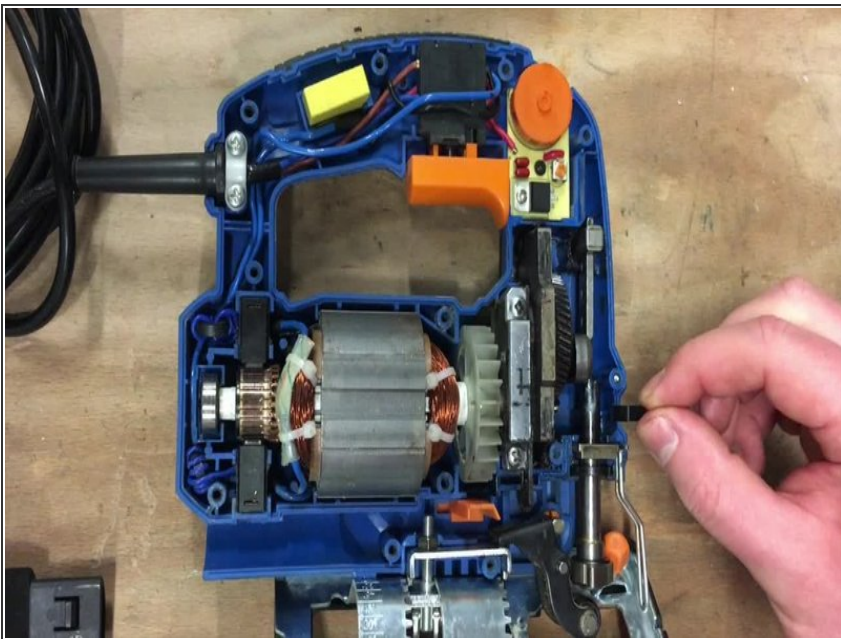
Step 7



- Put the blade bracket back in its place.

⚠ Make sure to properly put each piece back in its place.

Step 8



- Replace the clip in the same place. The curved side of the clip needs to go into the round side of the bracket.

ⓘ Lubricate.

⚠ Make sure to properly put each piece back in its place.

Step 9



- Close and screw the device back together.