



Dexter 20V Multi-Tool Motor Replacement

Written By: Slava Korchmar



INTRODUCTION

This guide will show you how replace the motor in your tool

Step 1 — grinding head



- Remove the battery. Remove the screws on the tool body.

Step 2



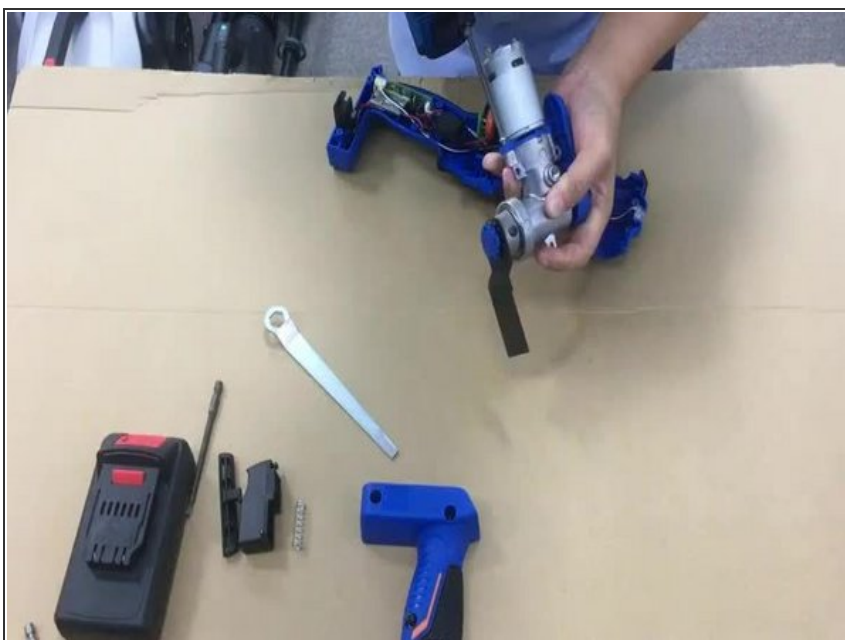
- Disassemble the tool body. Remove the grinding head.

Step 3 — motor



- Remove the motor head.

Step 4



- Disconnect the motor from the grinding head.

To reassemble your device, follow the instructions in reverse order.