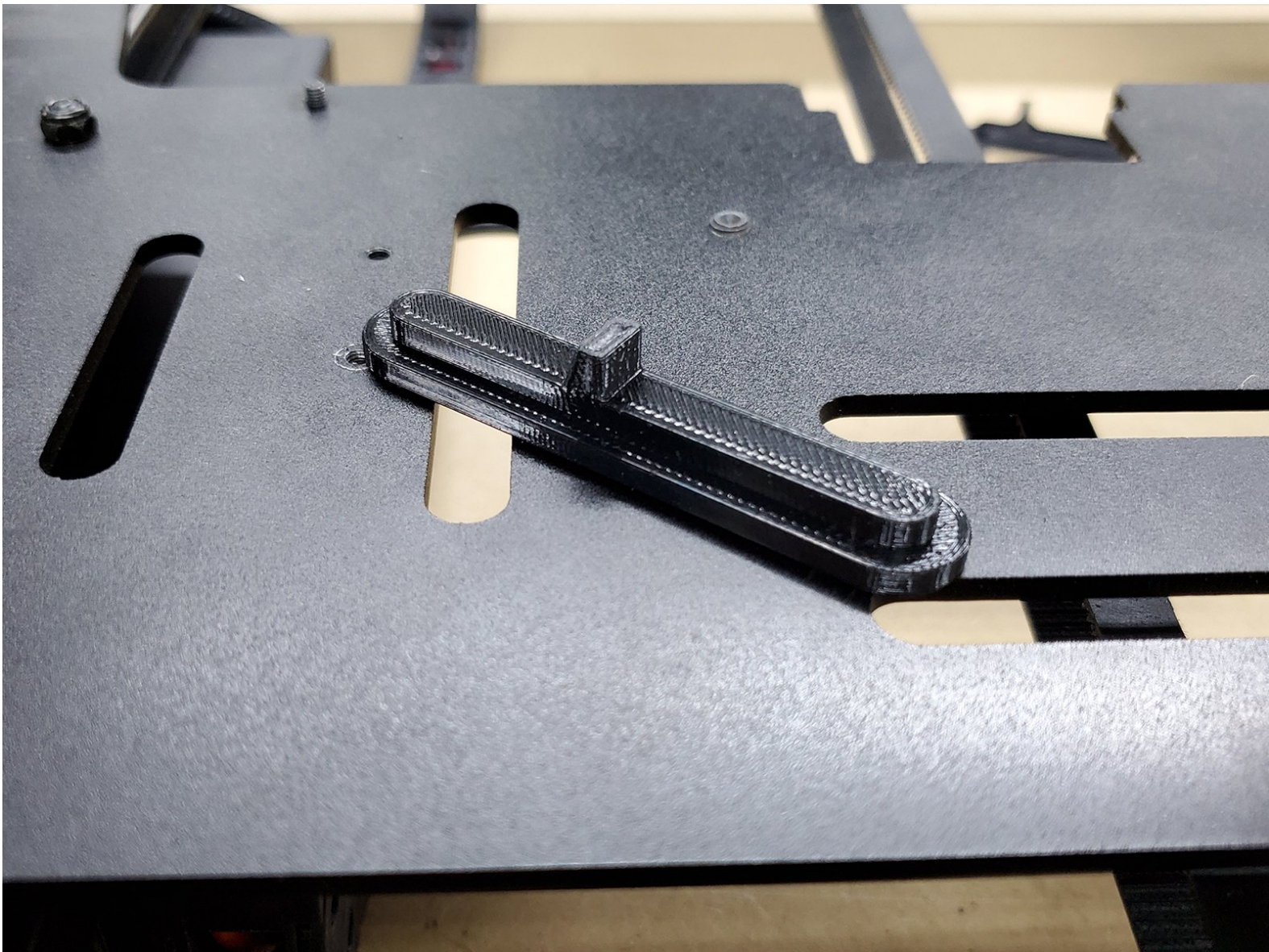




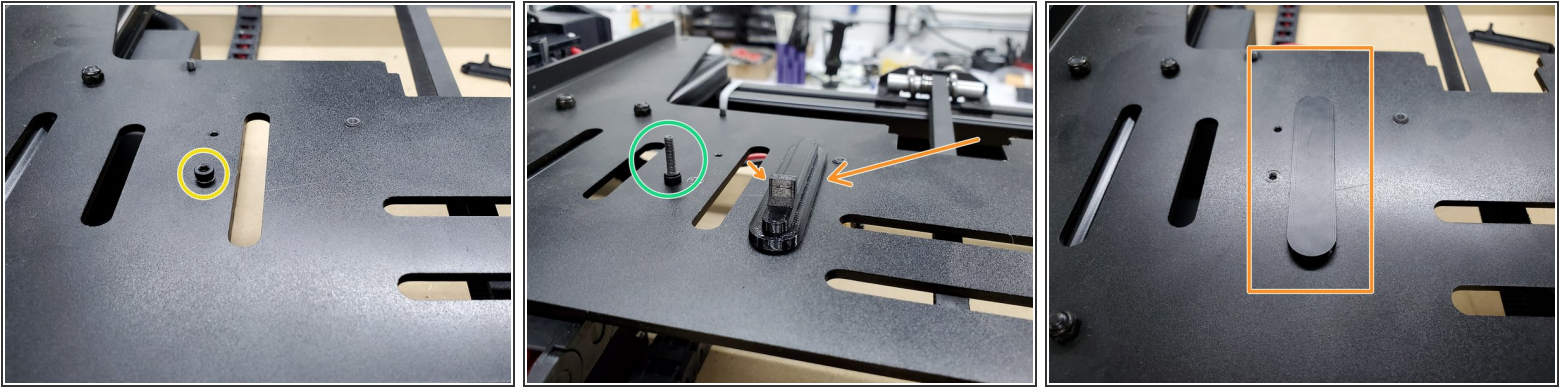
# Raptor 2 / T REX 3 Y End Stop Adaptor

This guide will display how to install the Y end stop adaptor so the new cable chain will fit on your Formbot/Vivedino Raptor 2 and TREX 3 3D Printer.

Written By: Tiny Machines 3D



## Step 1 — Y End Stop Adaptor

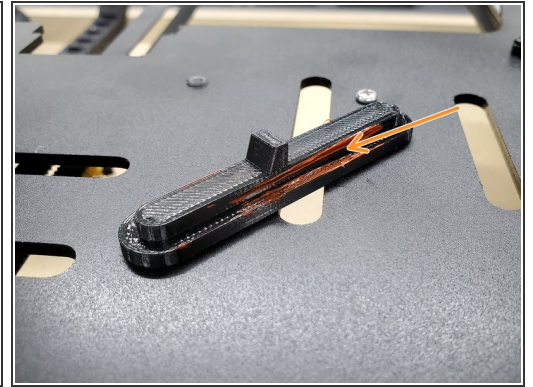
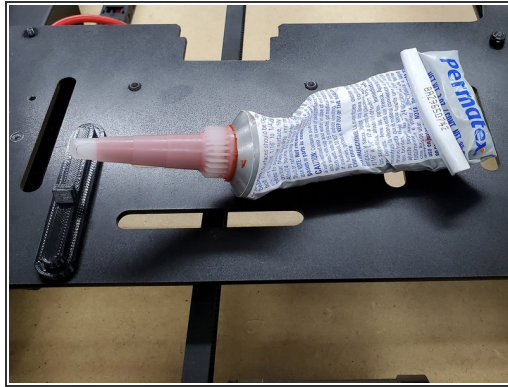
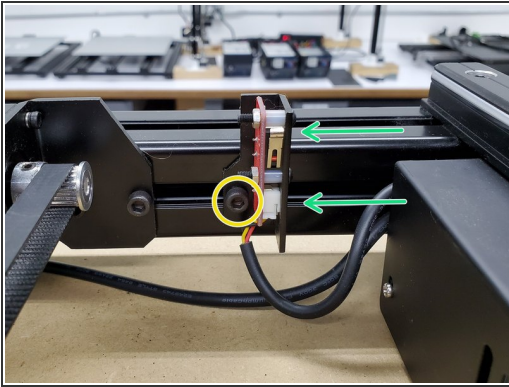


✦ Retain all fasteners until after assembly.

- Find the file for printing at <http://bit.ly/2RFHGyT>
- To start this process, you will need to remove all 4 corner leveling knobs. There may also be a star washer between the knob and Y carriage plate on each corner.
- The screw that is not allowing the new chain to sit flat, needs to be removed. Use an M2.5 hex for this.
  - The screw is no longer needed.
- The raised part sits closer to one side. It should face the end stop.
- Test fit the printed part first to make sure it sits all the way flush.

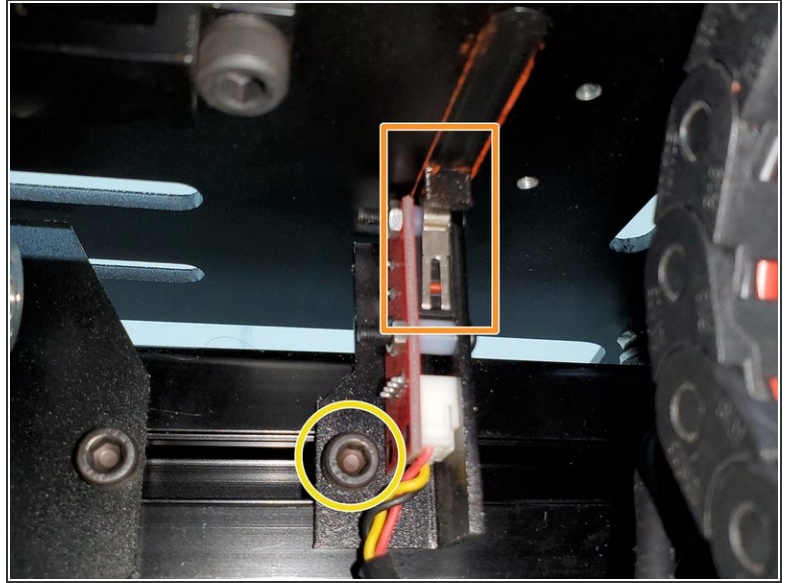


## Step 2 — Y End Stop Adaptor



- Loosen the socket head screw using a M4 hex .
- Reposition the end stop so that the new printed part triggers the lever.
- Using a RTV silicone based adhesive (high temp suggested) or another glue that works with plastic/metal, apply a small amount of glue to the sides of the printed part on the inside corner.

### Step 3 — Y End Stop Adaptor



- Clean up any excess glue using a paper towel.
- Double check that the end stop is triggered by the new part. Reposition the end stop bracket if necessary.
- Tighten the end stop bracket.
- ⓘ This is held in with a bolt and T Nut. Make sure the bracket is secure after tightening the bolt.
- Continue on with Step 10 on the Cable Chain Install Guide by clicking <http://bit.ly/2Runj7r>.

To reassemble your device, follow these instructions in reverse order.