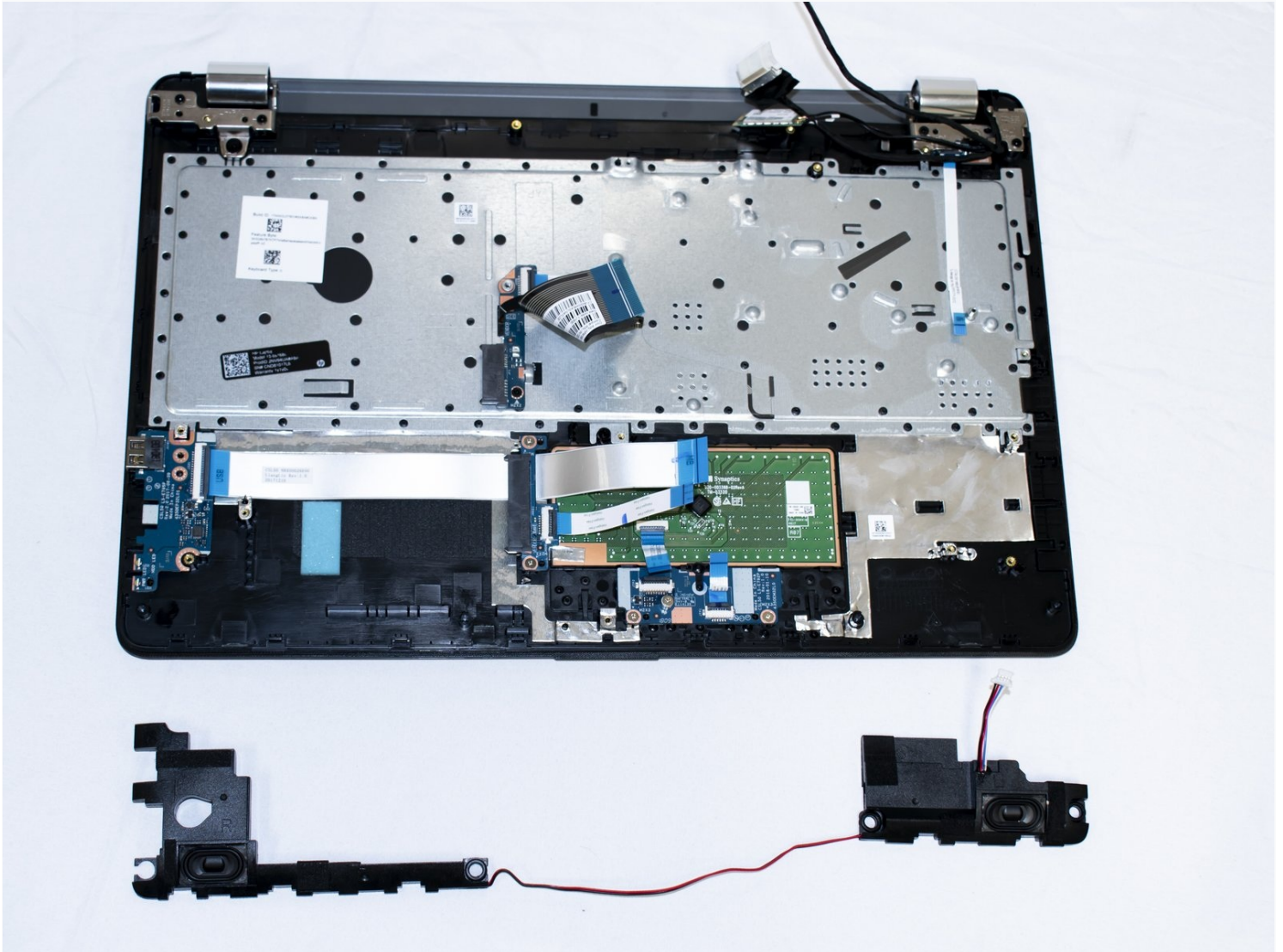




HP 15-bs168cl Speaker Replacement

Here is a step by step guide to remove and...

Written By: Ian Gascon



INTRODUCTION

Here is a step by step guide to remove and replace your speakers for the HP 15-bs168cl. If your laptop's speakers no longer work, are making a “crackling” sound, or unpredictably stop making sound this is the replacement guide for you. Before replacing your laptop speakers, make sure to troubleshoot your audio problems following the steps listed [here](#). After troubleshooting your audio issues, if you are still experiencing distorted audio through your speakers follow this guide to replace them.

TOOLS:

Fingers (1)

Phillips #0 Screwdriver (1)

iFixit Opening Tool (1)

iFixit Opening Picks (Set of 6) (1)

Phillips #1 Screwdriver (1)

Spudger (1)

Step 1 — Battery



- Unplug your laptop from its power adapter.
- Turn the laptop over.

Step 2



- Slide the Battery lock slider to the right until you see the “Unlocked” lock symbol.

Step 3



- Slide the Battery release slider towards the battery while pulling the battery out.

Step 4 — Hard Drive



- Use a Phillips #1 screwdriver to remove the six 10.5 mm screws visible on the bottom of the laptop.

Step 5



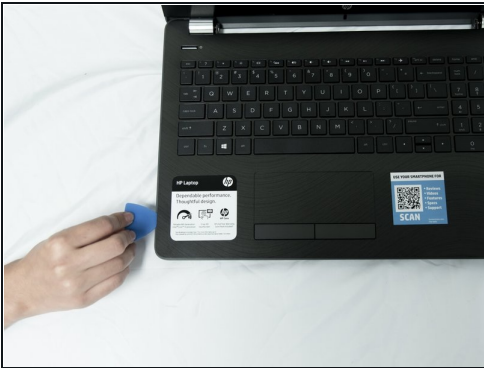
- Carefully peel the four rubber feet off the bottom to reveal the four hidden screws.
- Use a Phillips #1 screwdriver to remove the four 10.5 mm screws.

Step 6



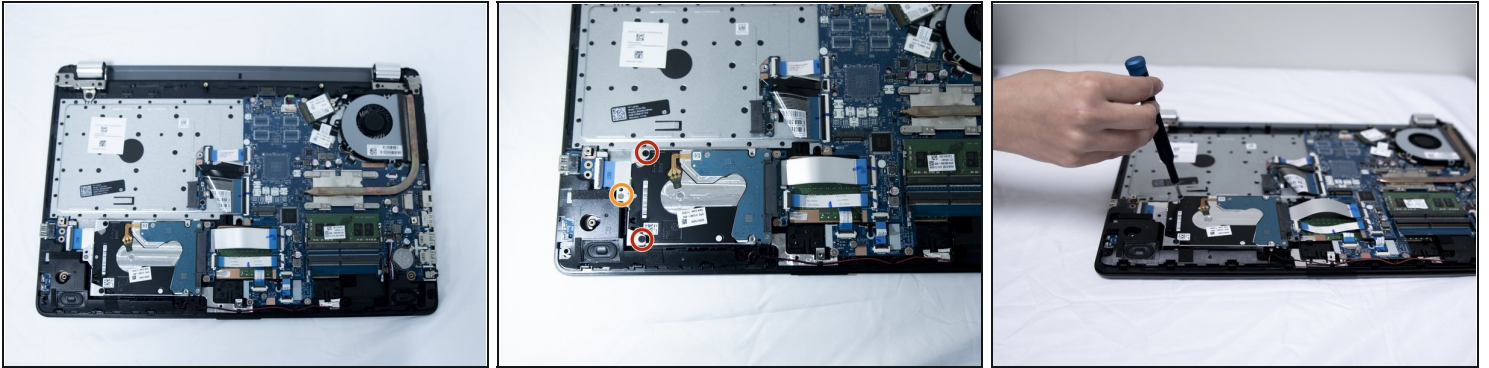
- Remove the DVD drive by carefully sliding it out.

Step 7



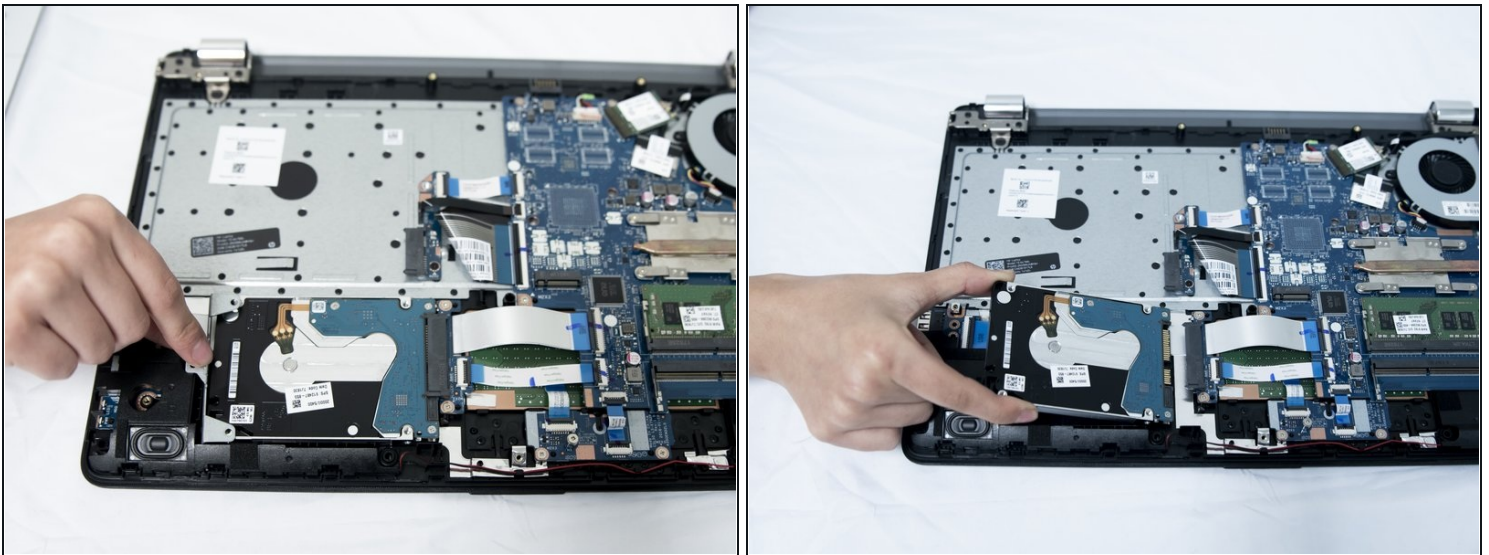
- Flip the laptop over and open the screen.
- Carefully use a flat [plastic card](#) to separate the bottom plastic shell from the main body of the computer. Slowly slide the plastic card around the computer in between the two halves of its casing.
- Flip the computer back over and remove the bottom plastic shell.

Step 8



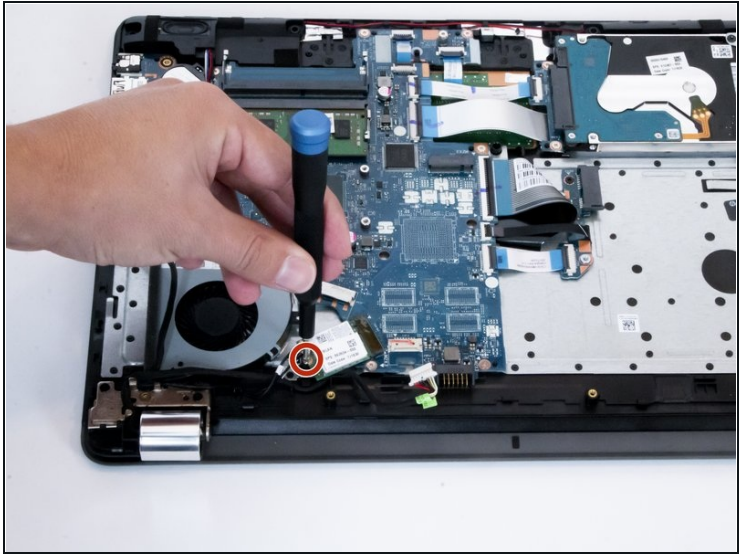
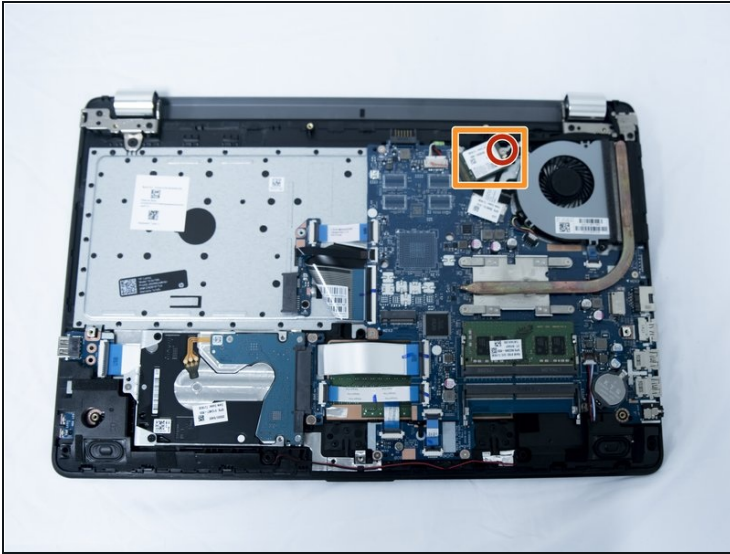
- Use a Phillips #1 screwdriver to remove the two 3.4 mm screws on the sides.
- Use a Phillips #0 screwdriver to remove the one 3.3 mm screw at the bottom of the bracket.

Step 9



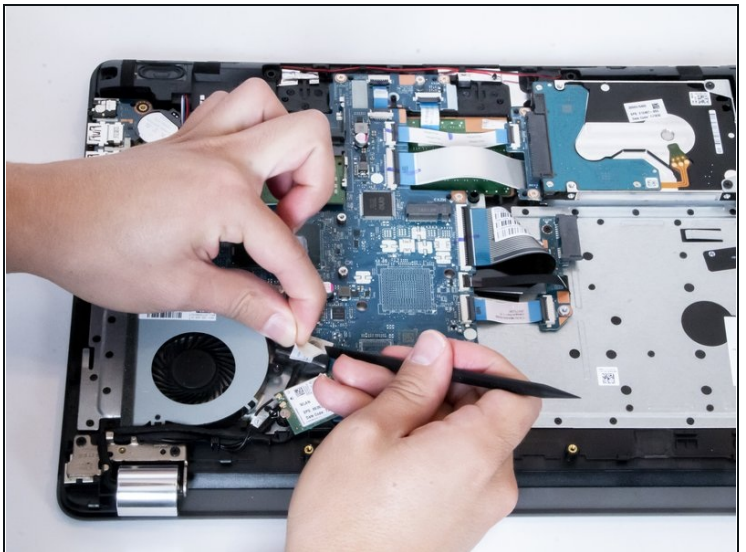
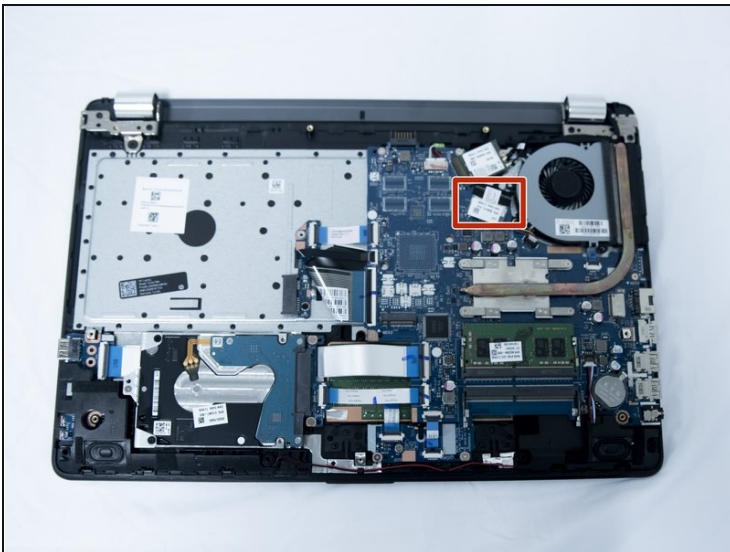
- Remove the metal bracket holding the hard drive in place.
- Carefully lift up the hard drive and slide it out of its connector.

Step 10 — Speaker



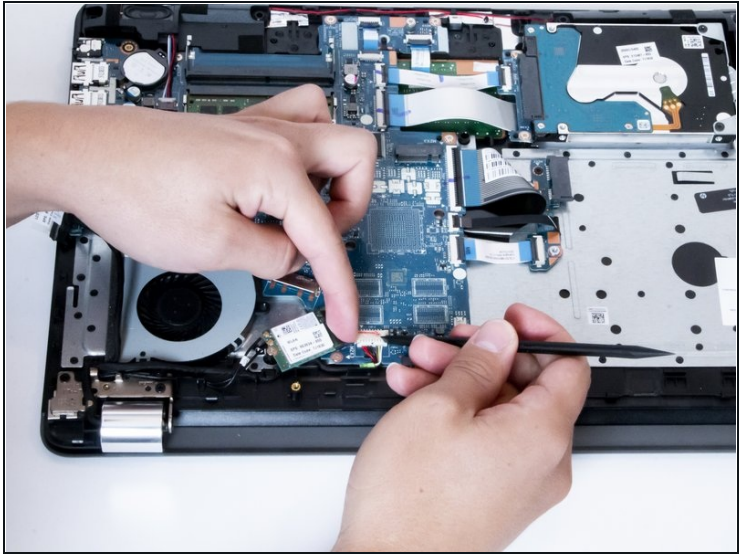
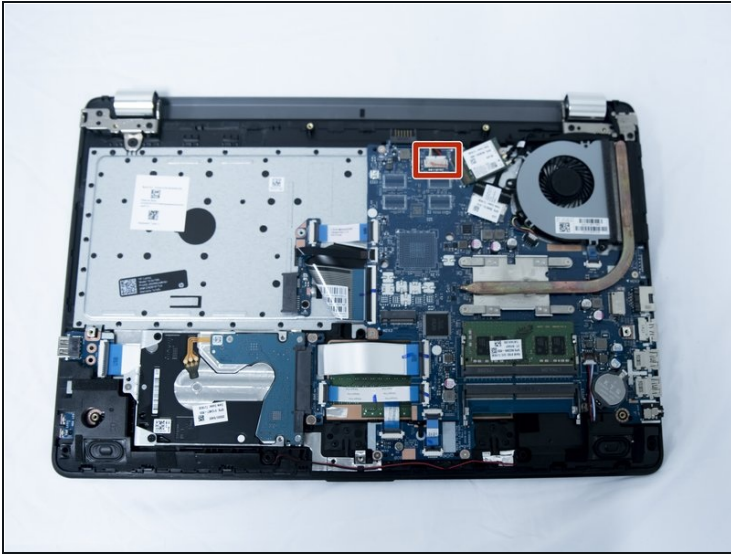
- Using a Phillips #0 screwdriver remove the screw from the Wi-fi card.
- Remove the card.

Step 11



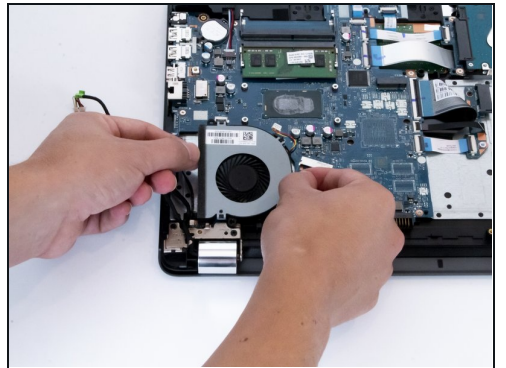
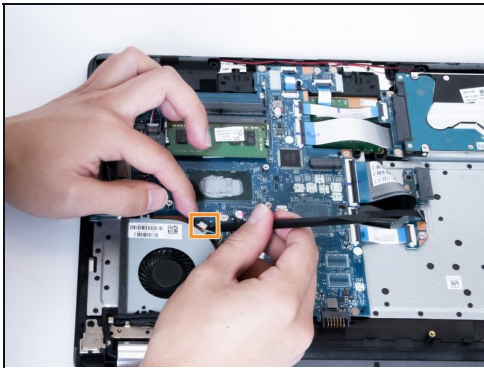
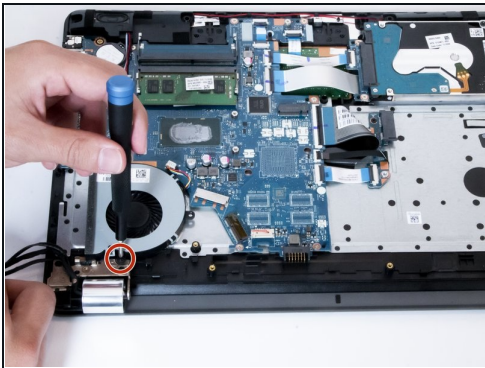
- Carefully unplug the LCD connector using a plastic spudger.

Step 12



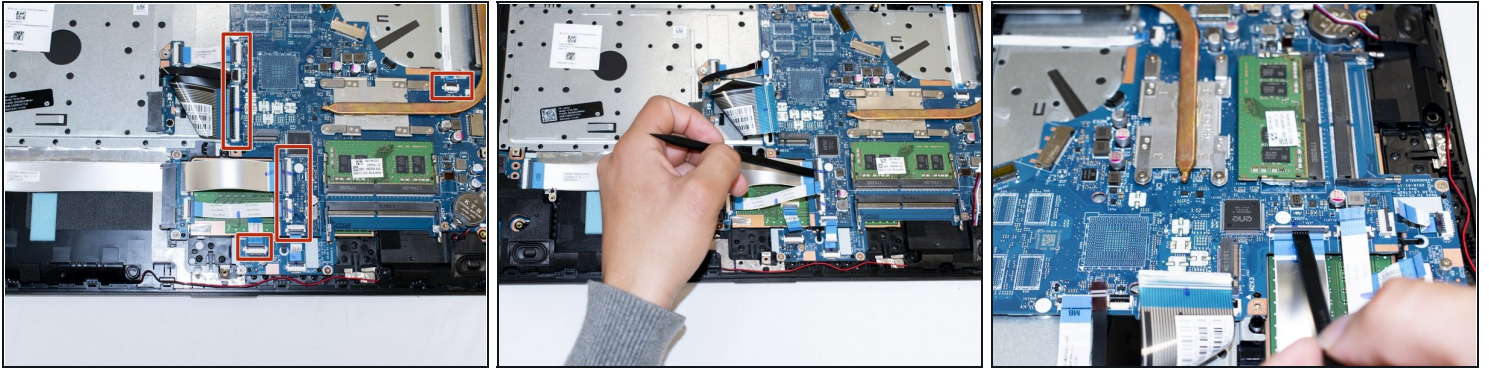
- Unplug the power connector.

Step 13



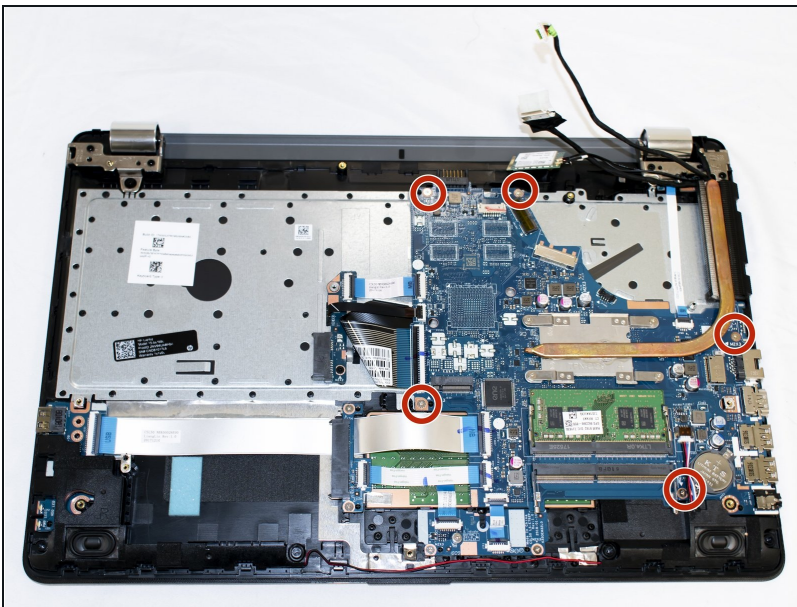
- Pull all three cables to the side to reveal the 6.7 mm screw attached to the fan.
- Remove the screw with a Phillips #0 screwdriver.
- Unplug the fan connector.
- Pull out the fan carefully leaving the heatsink in place.

Step 14



- Unplug the eight ribbon cables by flipping up the “easy-on” connector using the flat end of the plastic spudger.

Step 15



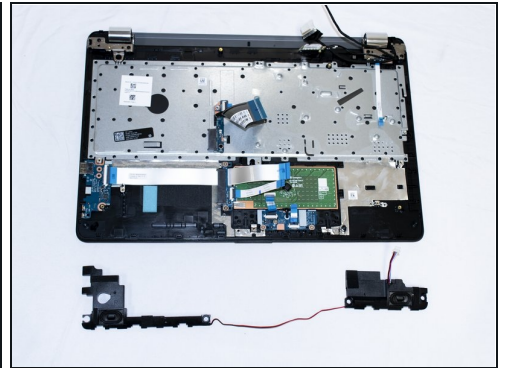
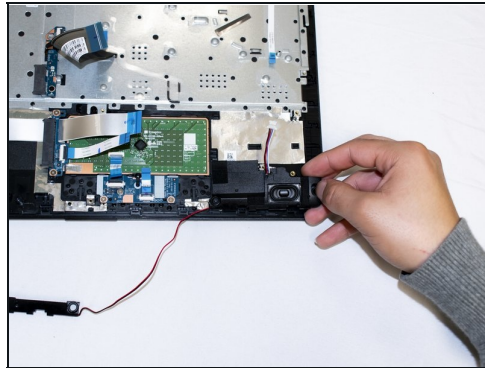
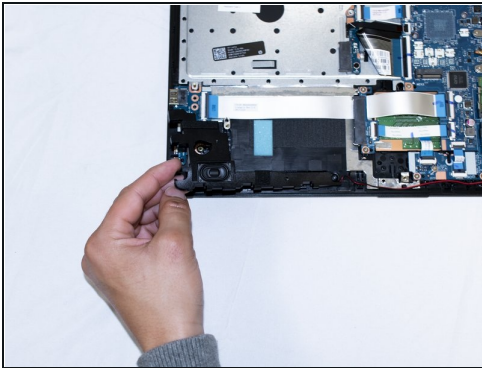
- Use a Phillips #0 screwdriver to unscrew the five 3.3mm screws from the motherboard.

Step 16



- Unplug the speaker cable from the motherboard.
- Remove the motherboard by carefully pulling it out using the plastic spudger.

Step 17



- Pull the left speaker assembly out and make sure to carefully remove the speaker wires from the guide channel towards the bottom of the computer.
- Carefully pull out the right side of the speaker assembly.

To reassemble your device, follow these instructions in reverse order.