



# Audio Technica ATH-AD500 Driver Replacement

Written By: Nick Levy



---

# INTRODUCTION

This guide will help your install a new driver.



## TOOLS:

- [Desoldering Braid](#) (1)
  - [Phillips #1 Screwdriver](#) (1)
  - [Soldering Workstation](#) (1)
-

## Step 1 — Speaker Assembly



- Remove the ear pads by peeling them away from the grill.

## Step 2



- Remove all four 1cm screws on the inside of the headphone using a #1 Phillips head.



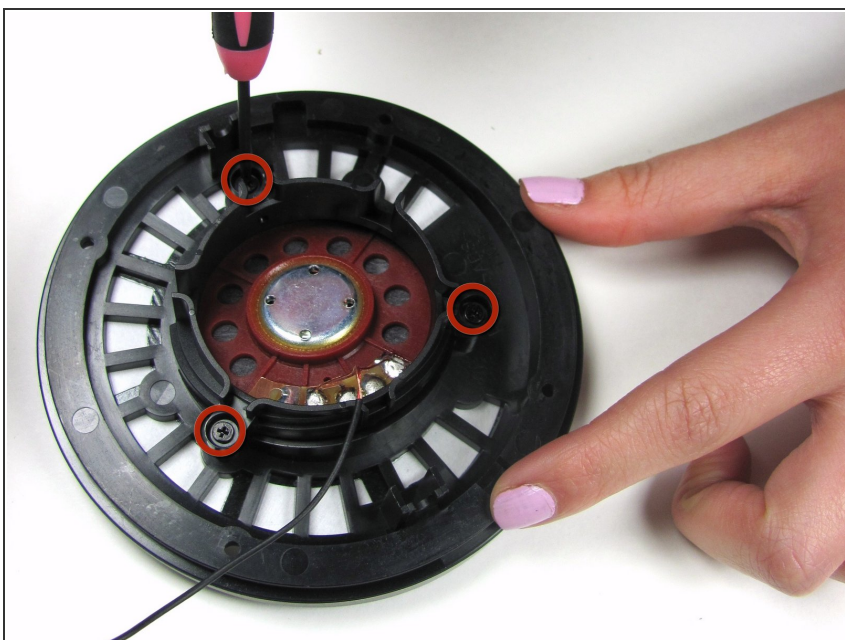
### Step 3



- Remove the speaker from the grill by pulling it out.

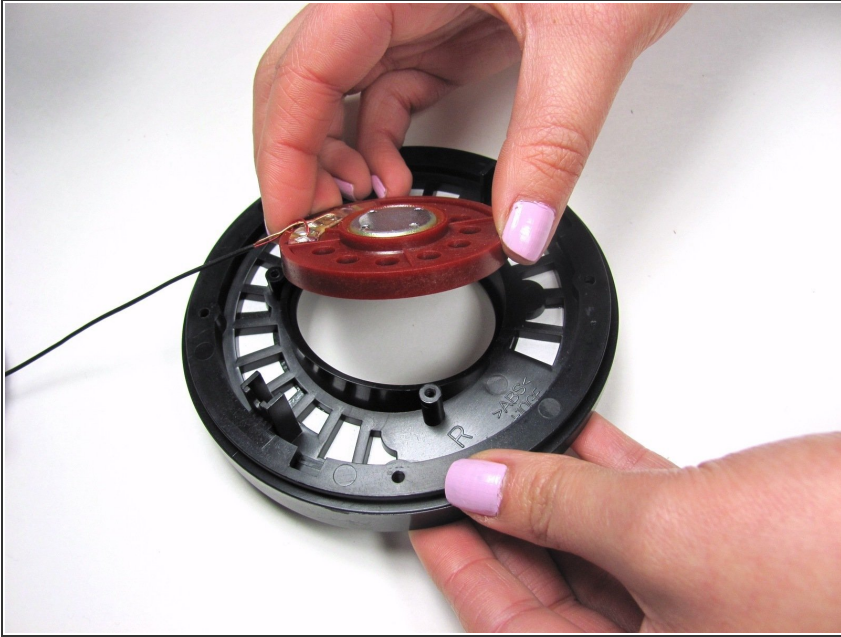
**⚠ Remove the speaker carefully so you do not rip the wires out.**

### Step 4 — Driver



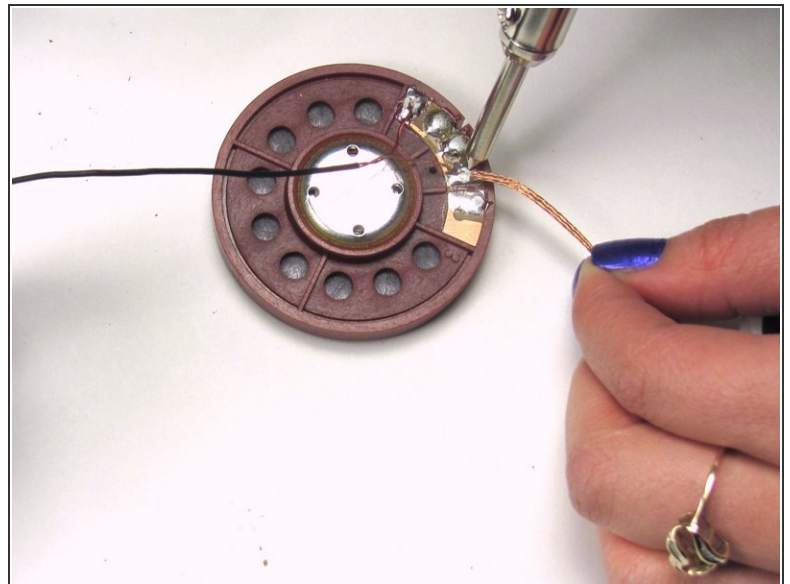
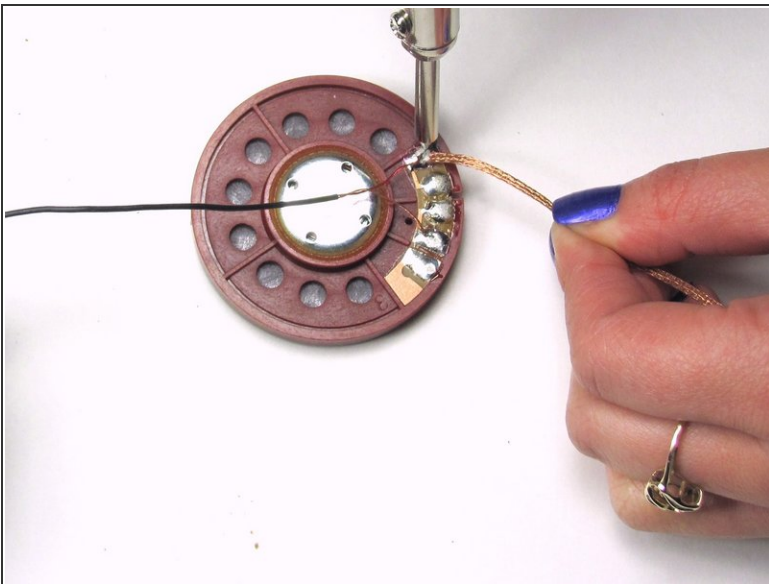
- With a #0 phillips head, unscrew the three, 1 cm screws which are holding the driver (red wafer) in its bracket.

## Step 5



- Pull the driver out of its bracket.

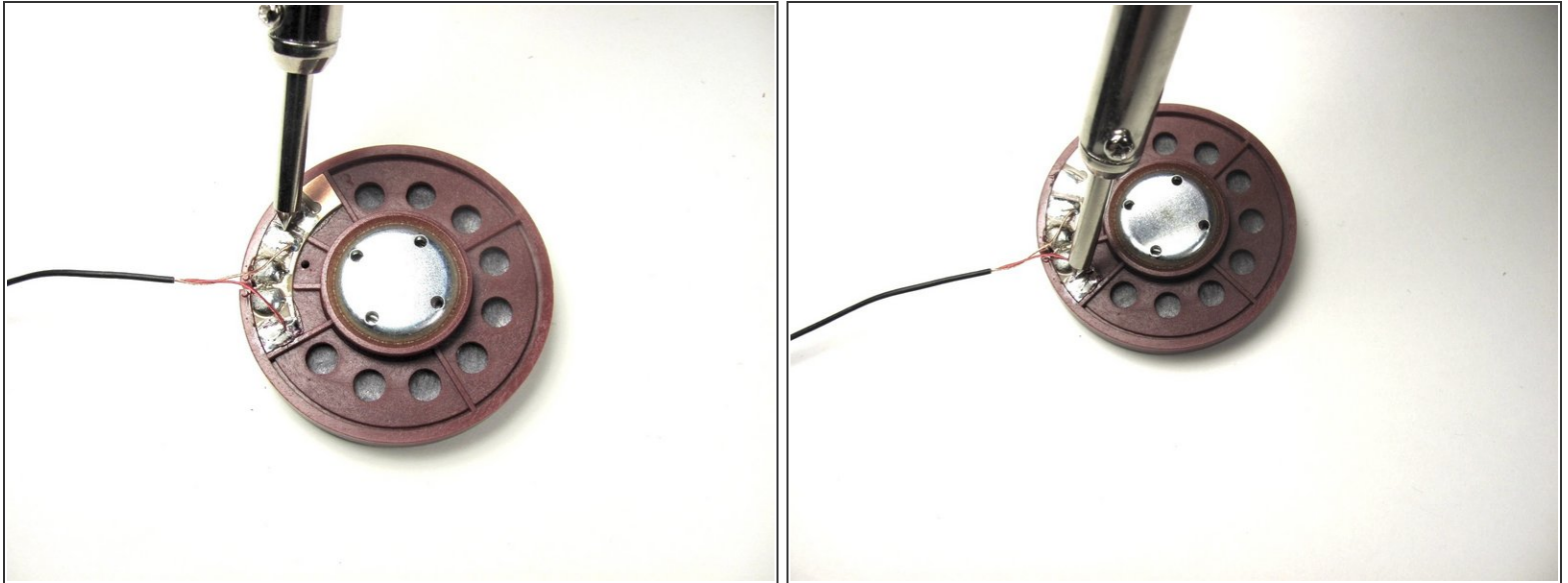
## Step 6



- Remove the two wires, red and yellow, by de-soldering them from the driver using a soldering iron and desoldering wick. Reference [How To Solder and Desolder Connections](#).

**⚠ The areas where you solder will be hot so wait until the solder joints are cool before handling the wires again.**

## Step 7



- Connect the existing wires to the new driver by re-soldering the wires using the soldering iron.
- Using the copper as a reference, re-solder the yellow wire to the top left solder joint and the red to the bottom left solder joint.

**⚠ The areas where you solder will be hot so wait until the solder joints are cool before handling the wires again.**

To reassemble your device, follow these instructions in reverse order.