



HP Pavilion 15-cd040wm Hard Drive Replacement

If your laptop runs slowly or crashes...

Written By: Brian Cornet



INTRODUCTION

If your laptop [runs slowly](#) or [crashes unexpectedly](#), it may be due to a faulty or outdated hard drive that requires replacement.

To access the hard drive, you will first need to open your HP Pavilion 15-cd040wm by disassembling its back cover.

Before beginning, make sure to power off your laptop completely and disconnect it from any external power source. Once the back cover is off, be sure to disconnect the battery from the motherboard to ensure there is no power going to the laptop while it is being worked on.



TOOLS:

- [iFixit Opening Tool](#) (1)
- [Phillips #0 Screwdriver](#) (1)
- [Spudger](#) (1)



PARTS:

- [1 TB SSD](#) (1)
- [250 GB SSD](#) (1)
- [Crucial MX500 500 GB SSD](#) (1)
- [2 TB SSD](#) (1)

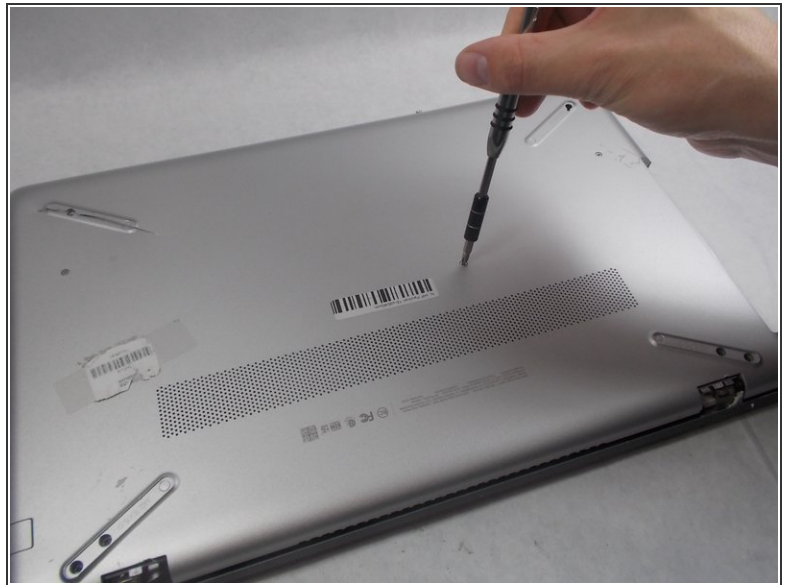
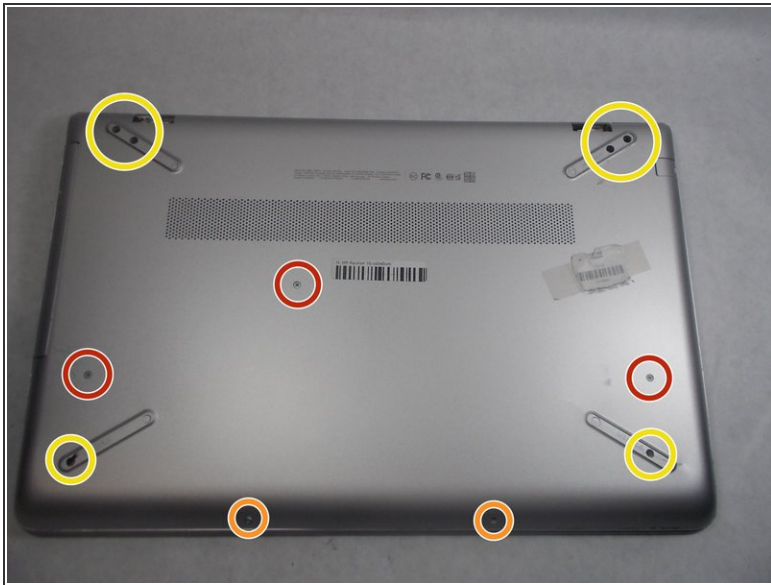
Step 1 — HP Pavilion 15-cd040wm Back Cover Disassembly



- The first step is to remove the four rubber non-slip pads on the bottom of the laptop to expose screws hidden underneath them. Peel off each tab with your fingers.

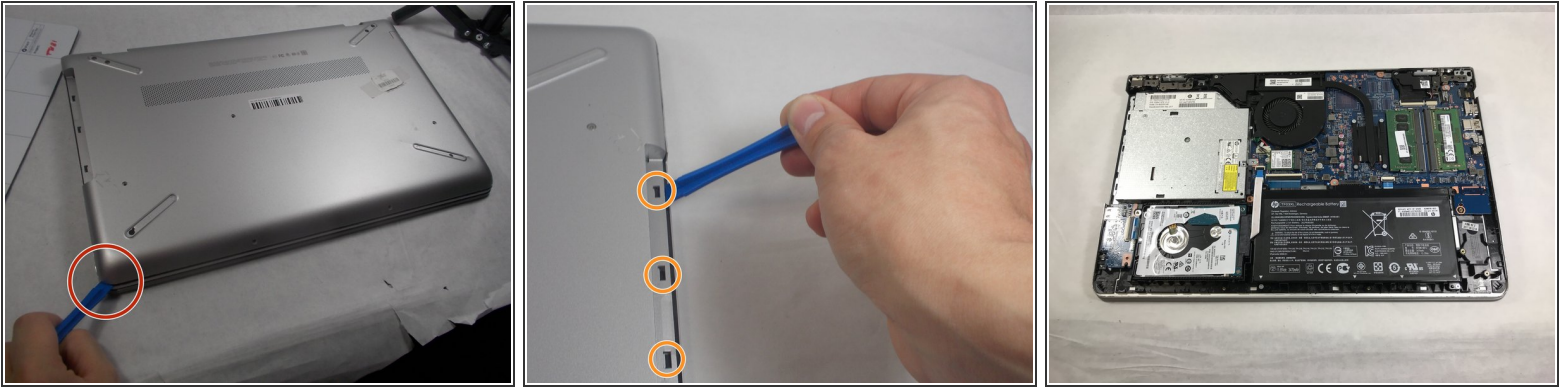
i If you have trouble gripping a tab, use a spudger to wedge it loose.

Step 2



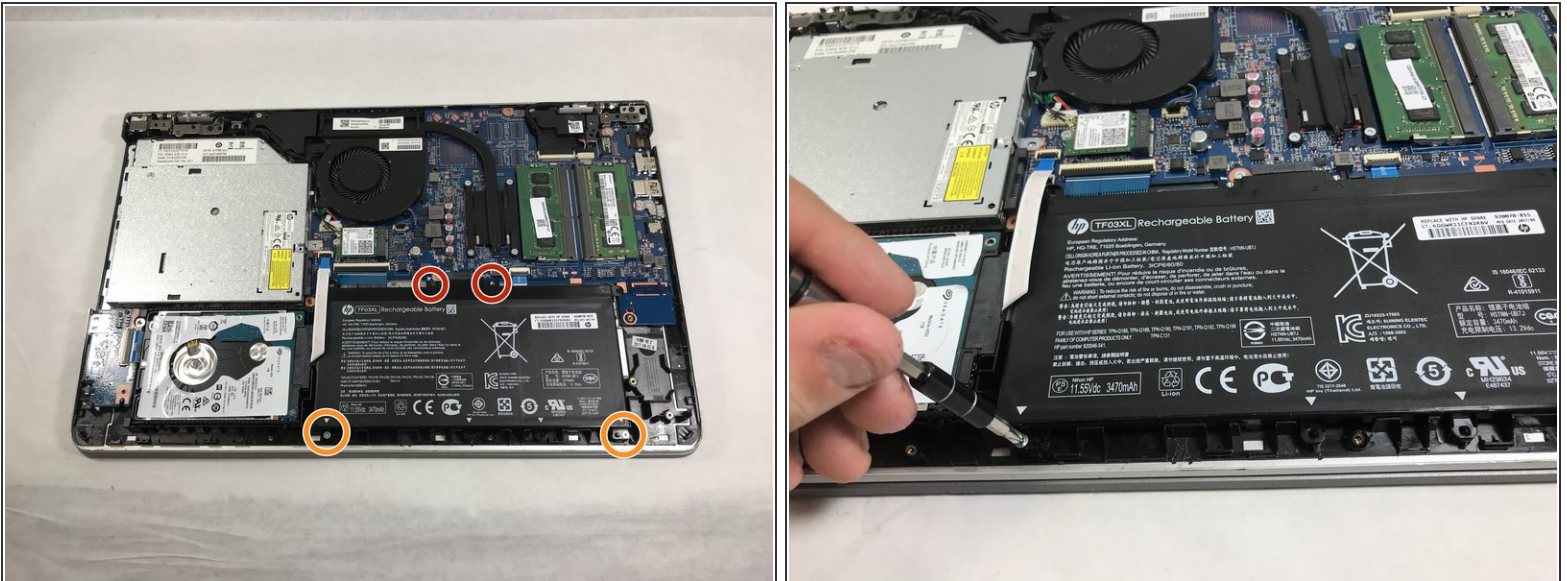
- 3x 10mm Phillips screws
- 2x 5mm Phillips screws
- 6x 6mm Phillips screws
- Remove all screws using a size Phillips #0 screwdriver.

Step 3



- Using the iFixit opening tool, carefully pry along the sides of the back cover.
- After all of the edges of the back cover have been freed, use your opening tool to carefully unclip the tabs holding the back cover to the CD drive.
- After everything is unclipped, you can safely remove the back cover from the rest of the device.

Step 4 — Battery



- 2x 5mm Philips screws
- 2x 3mm Philips screws
- Remove all screws using a size Phillips #0 screwdriver.

Step 5



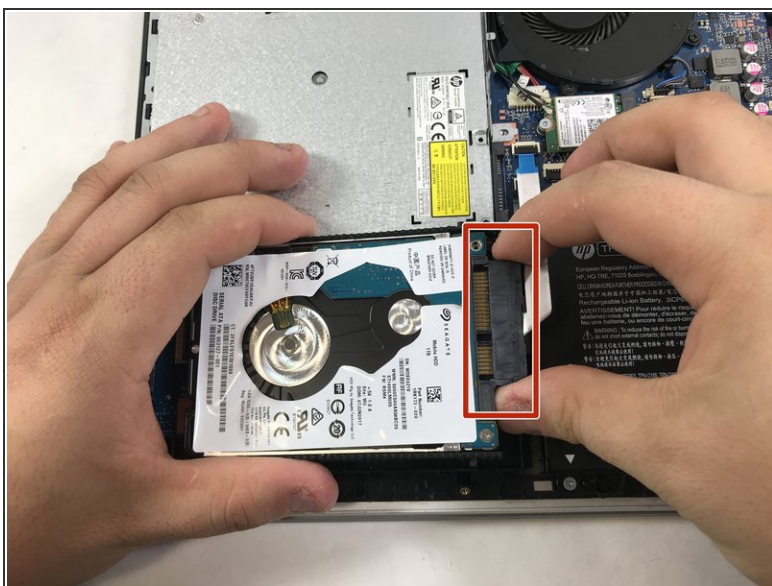
- Gently pull up on the battery and tilt it away from the rest of the laptop chassis.
- Pull out the battery at an angle and lift it out of the laptop.

Step 6 — Hard Drive



- Using a spudger or the opening tool, lift the end closest to the battery until you can hold the hard drive with your hands.

Step 7



- Carefully remove the connector ribbon cable from the elevated end of the hard drive, then remove the hard drive.

To reassemble your device, follow these instructions in reverse order.