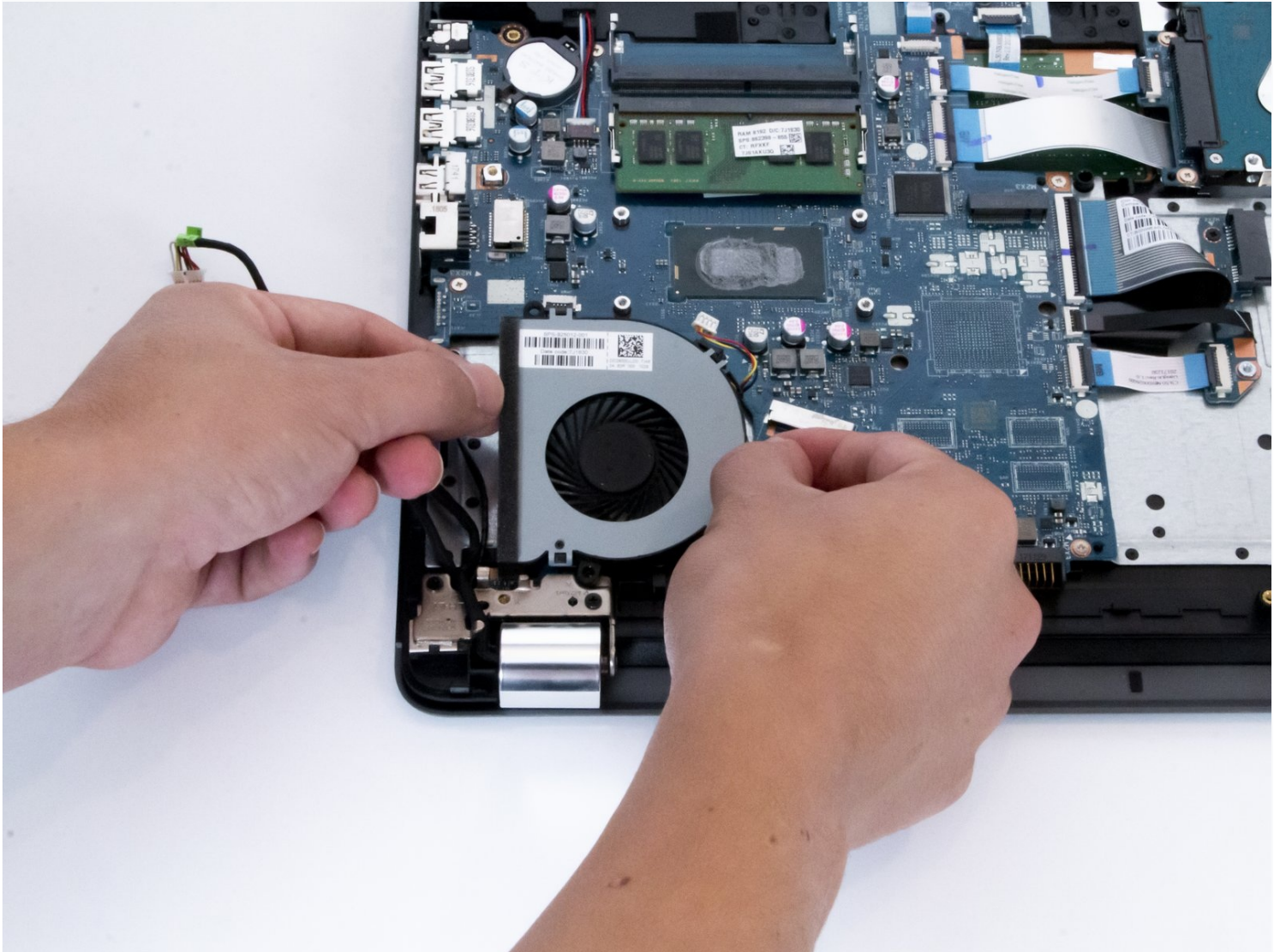




# HP 15-bs168cl Fan Replacement

Before replacing the fan on your laptop, follow...

Written By: Christian Puga



# INTRODUCTION

Before replacing the fan on your laptop, follow this [troubleshooting guide](#) to make sure it is a hardware issue with your fan. If your fan is making a lot of noise/sounds like it is rattling or your computer is constantly getting very hot, follow this guide to properly remove and replace your fan.

---

## TOOLS:

[Fingers](#) (1)

[Phillips #0 Screwdriver](#) (1)

[iFixit Opening Tool](#) (1)

[Spudger](#) (1)

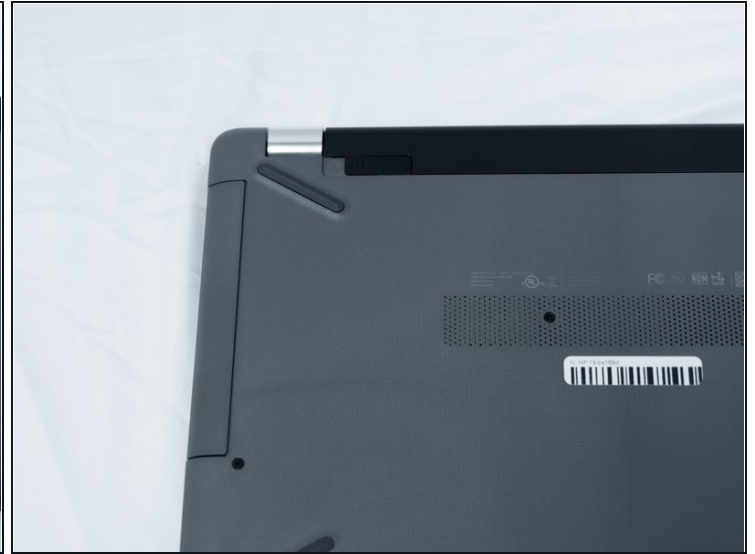
---

## Step 1 — Battery



- Unplug your laptop from its power adapter.
- Turn the laptop over.

## Step 2



- Slide the Battery lock slider to the right until you see the “Unlocked” lock symbol.

## Step 3



- Slide the Battery release slider towards the battery while pulling the battery out.

## Step 4 — Fan



- Use a Phillips #0 screwdriver to remove the six 10.5 mm screws visible on the bottom of the laptop.

## Step 5



- Carefully peel the four rubber feet off the bottom to reveal the four hidden screws.
- Use a Phillips #1 screwdriver to remove the four 10.5 mm screws.

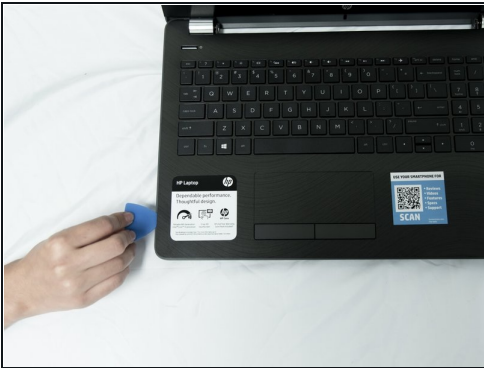


## Step 6



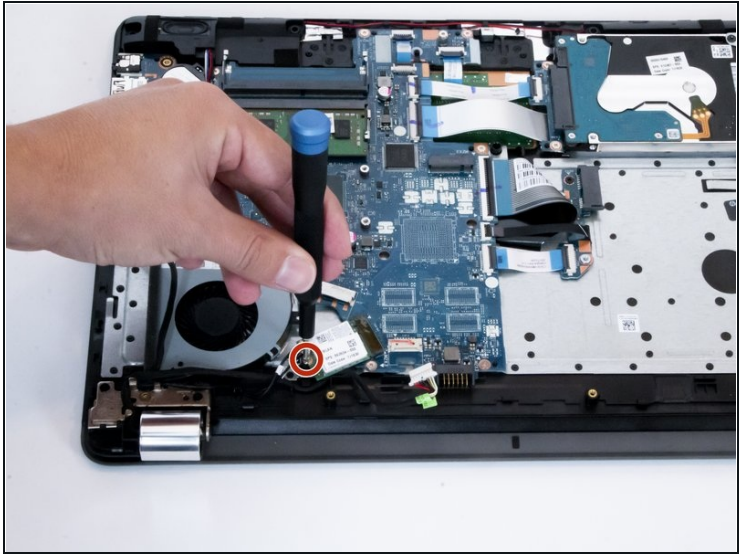
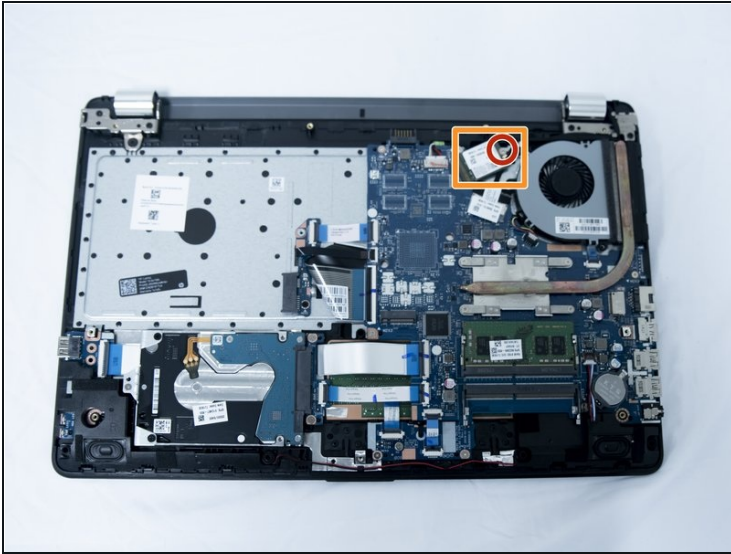
- Remove the DVD drive by carefully sliding it out.

## Step 7



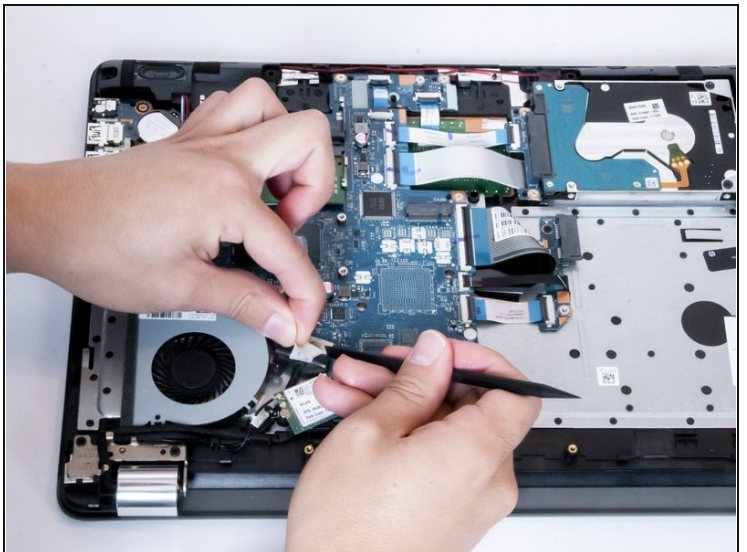
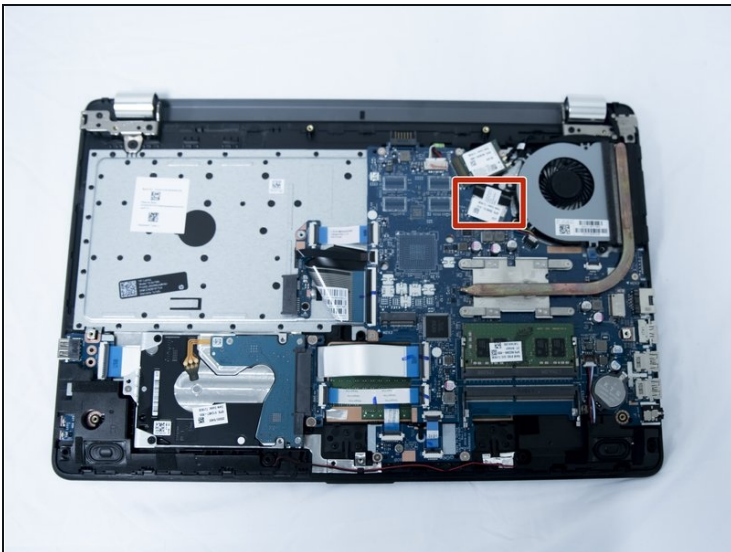
- Flip the laptop over and open the screen.
- Carefully use a flat [plastic card](#) to separate the bottom plastic shell from the main body of the computer. Slowly slide the plastic card around the computer in between the two halves of its casing.
- Flip the computer back over and remove the bottom plastic shell.

## Step 8



- Using a Phillips #1 screwdriver remove the screw from the Wi-fi card.
- Remove the card.

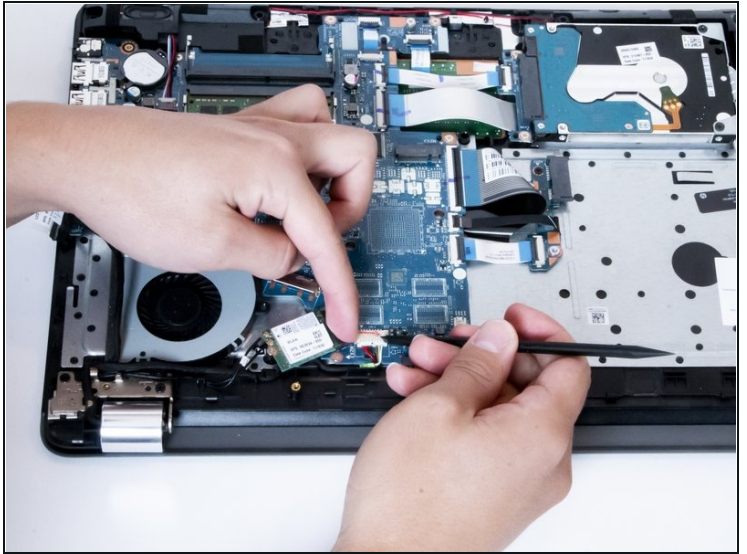
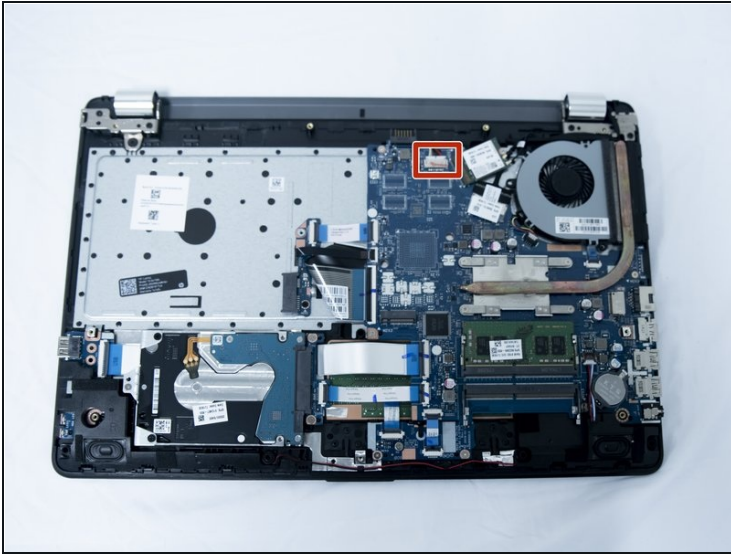
## Step 9



- Carefully unplug the LCD connector using a plastic spudger.

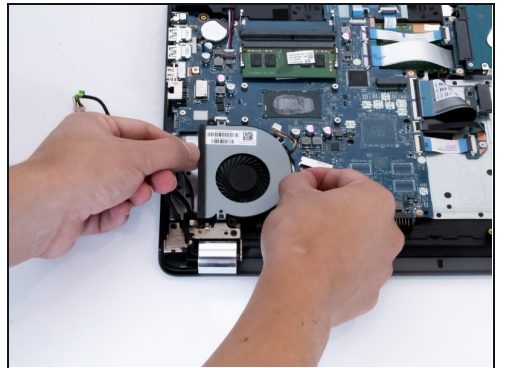
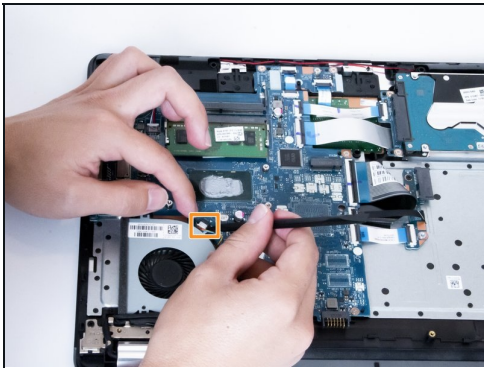
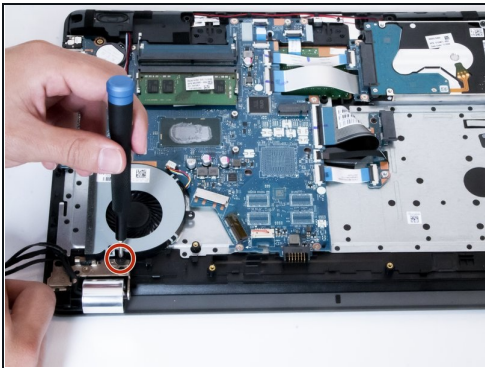


## Step 10



- Unplug the power connector.

## Step 11



- Pull all three cables to the side to reveal the 6.7 mm screw attached to the fan.
- Remove the screw with a Phillips #0 screwdriver.
- Unplug the fan connector.
- Pull out the fan carefully leaving the heatsink in place.

---

To reassemble your device, follow these instructions in reverse order.