



Digiland 10.1" DL1016 Battery Replacement

Use this guide to replace your Digiland 10.1 Battery

Written By: Virginia Tapia





TOOLS:

- [Spudger](#) (1)
- [Metal Spudger](#) (1)
- [iFixit Opening Tools](#) (1)
- [iFixit Opening Picks set of 6](#) (1)



PARTS:

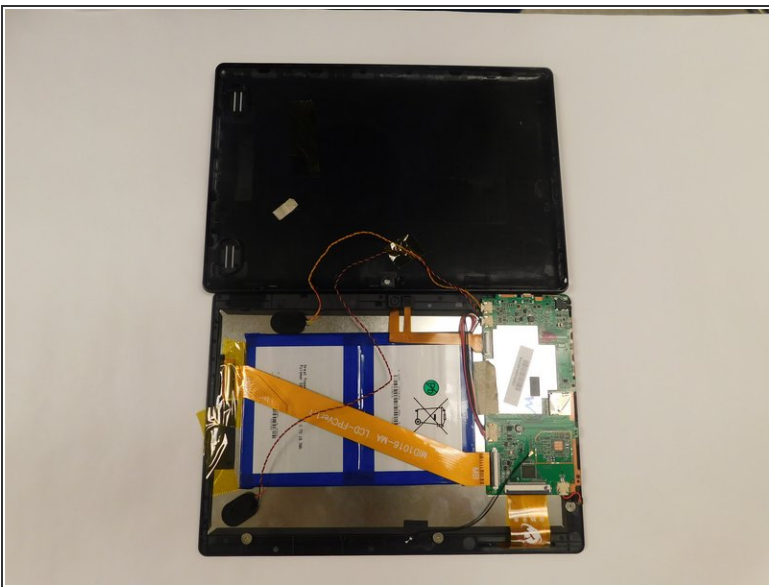
- [Digiland dl1016 Bettery](#) (1)

Step 1 — Digiland 10.1" DL1016 Remove Backing



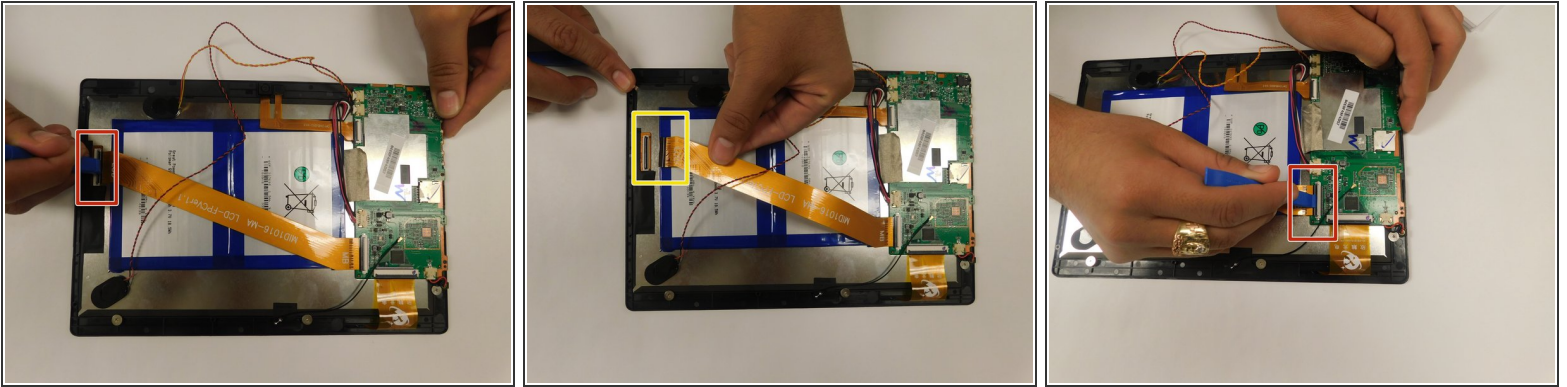
- Use an opening pick and an opening tool to pry the backing off the back of the tablet.
- ⓘ You may need some force when doing this and if needed use a metal spudger.

Step 2



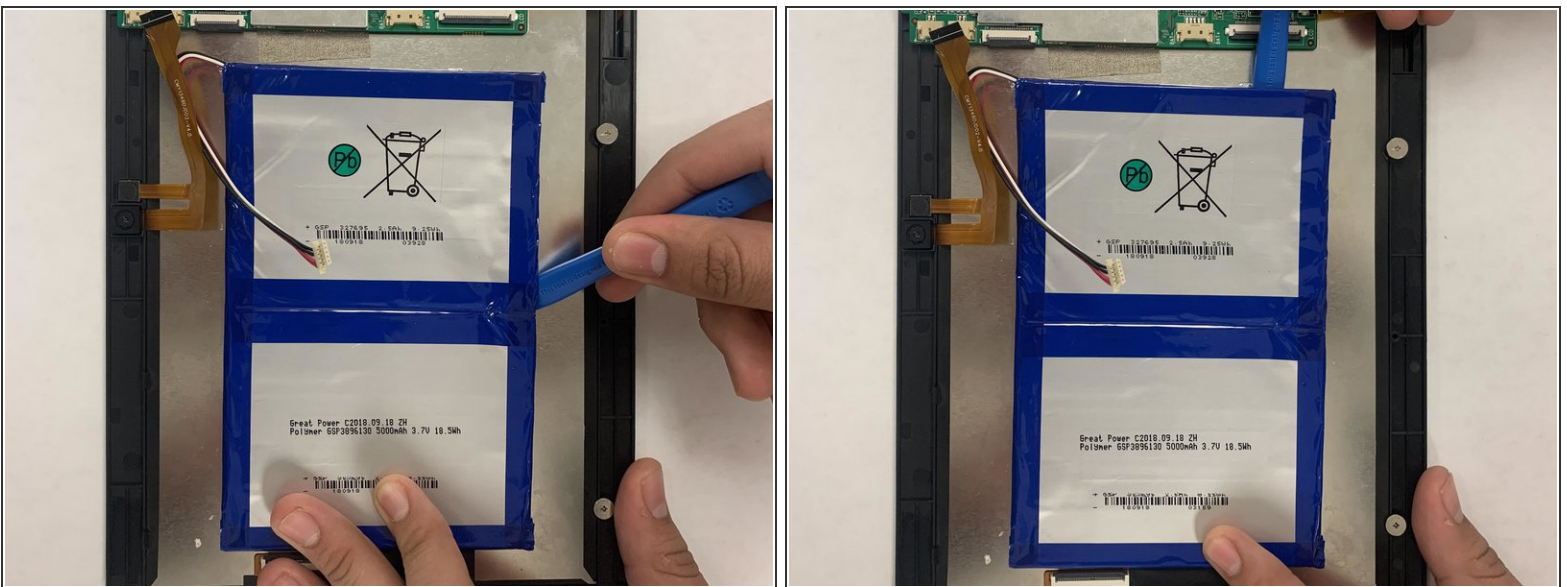
- Gently lift the backing off.

Step 3 — Digiland 10.1" DL1016 Disconnect LCD Connectors



- Pull back the black flaps on the ZIF cable connectors.
- Pull the ribbon cables out of the connectors.

Step 4 — Digiland 10.1" DL1016 Remove Battery



 Use an ESD safe pryer to lift the battery up.

- There is glue that holds the battery down, so carefully pry it open. You may need to use some force.

Step 5 — Battery



- Once you remove the battery, simply replace the battery with a new one.

To reassemble your device, follow these instructions in reverse order.