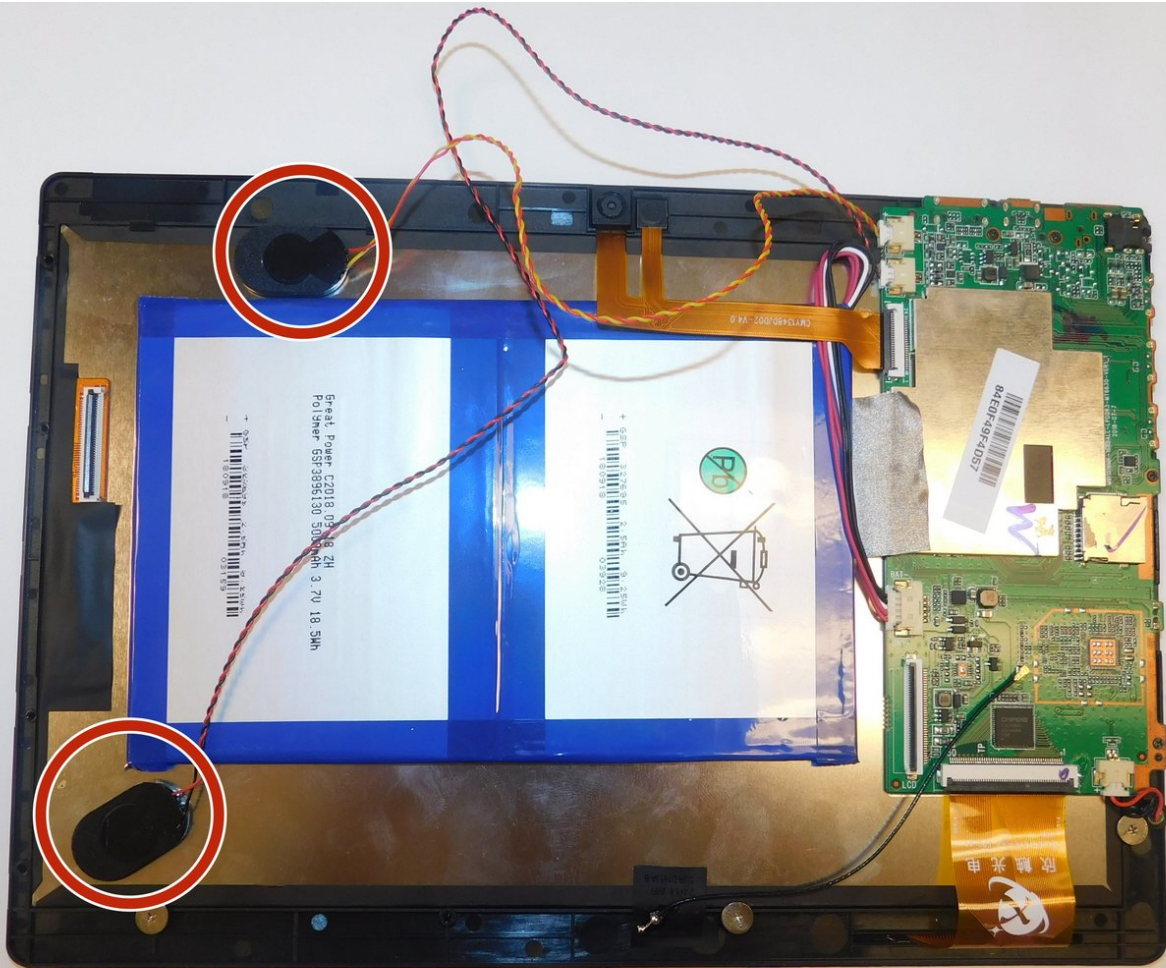




Digiland 10.1" DL1016 Speakers Replacement

This guide will help you replace the speakers.

Written By: Jose Luis Rodriguez



INTRODUCTION

Speaker volume is low or audio is distorted are symptoms of a faulty speaker. Please review our troubleshooting page [Digiland 10.1" DL1016 Troubleshooting](#) before proceeding to the replacement. Once you have determined your symptoms and are certain you need a speaker replacement, continue on with this guide.

This guide will help you replace the speaker of a Digiland 10.1" DL1016 device



TOOLS:

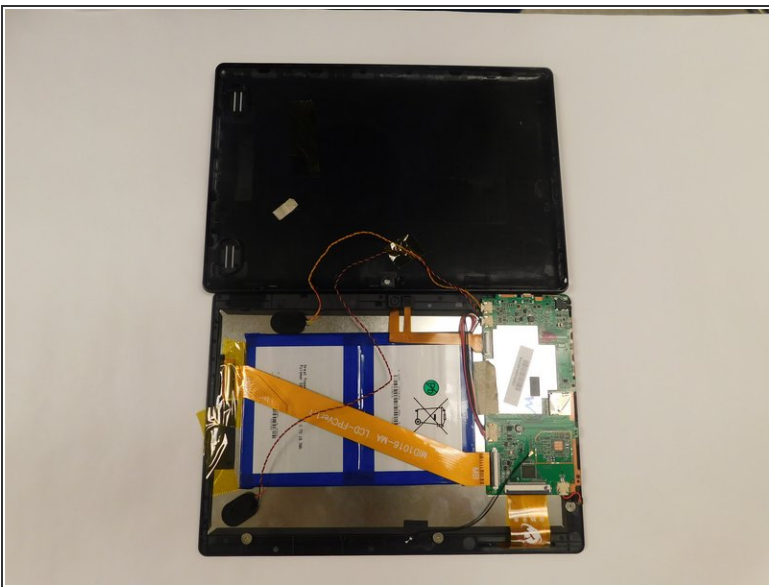
- [Spudger](#) (1)
 - [Metal Spudger](#) (1)
 - [iFixit Opening Tools](#) (1)
 - [iFixit Opening Picks set of 6](#) (1)
-

Step 1 — Digiland 10.1" DL1016 Remove Backing



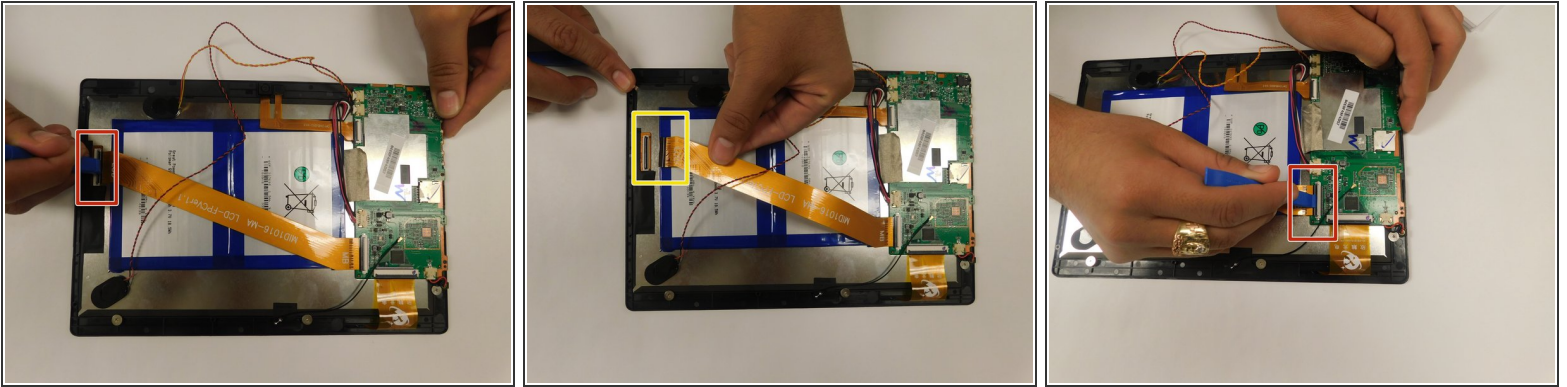
- Use an opening pick and an opening tool to pry the backing off the back of the tablet.
- ⓘ You may need some force when doing this and if needed use a metal spudger.

Step 2



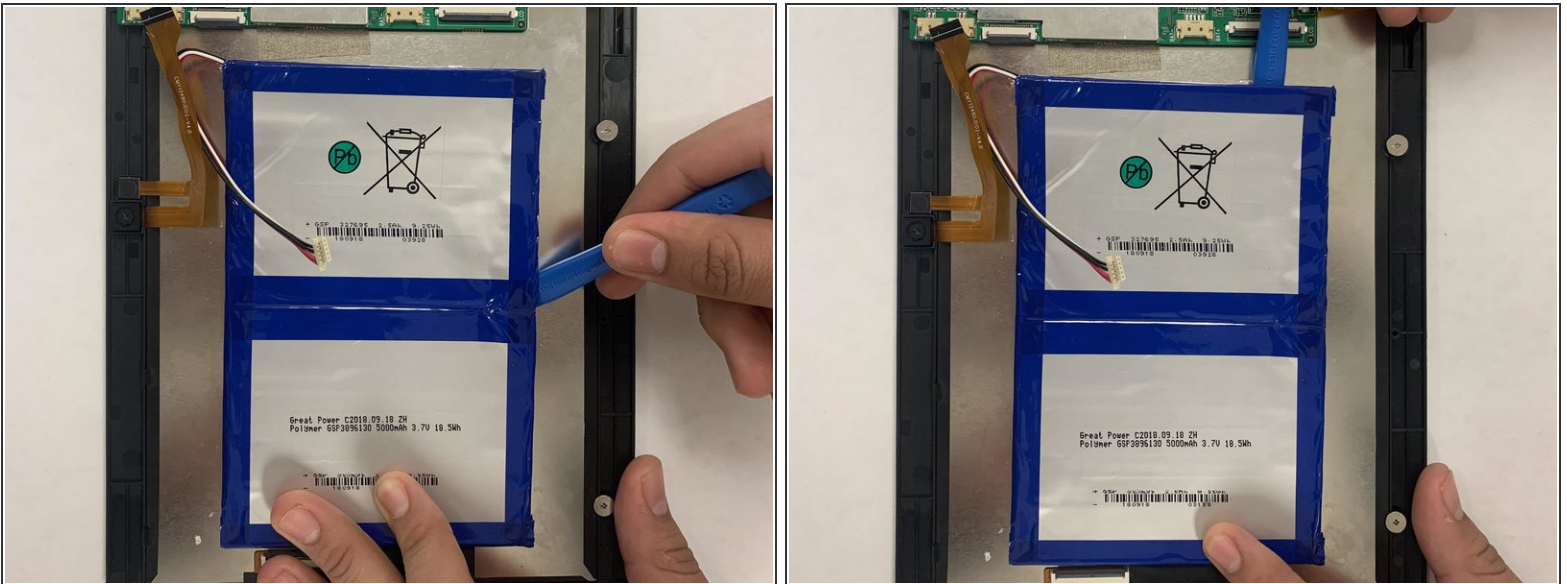
- Gently lift the backing off.

Step 3 — Digiland 10.1" DL1016 Disconnect LCD Connectors



- Pull back the black flaps on the ZIF cable connectors.
- Pull the ribbon cables out of the connectors.

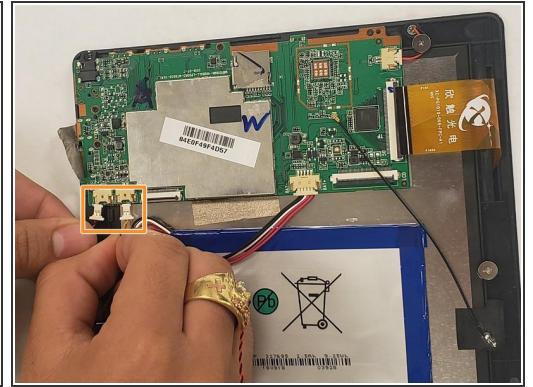
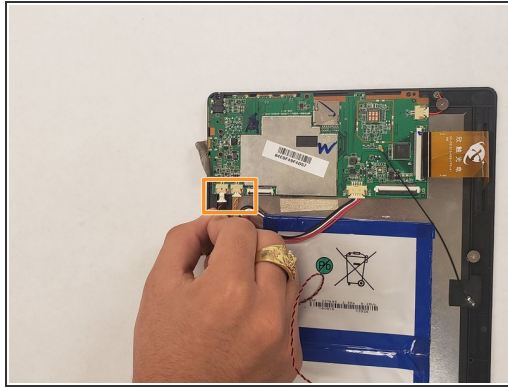
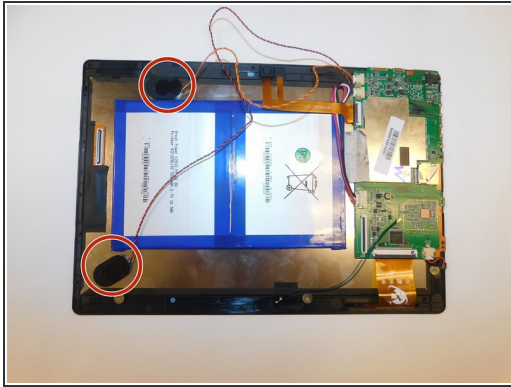
Step 4 — Digiland 10.1" DL1016 Remove Battery



 Use an ESD safe pryer to lift the battery up.

- There is glue that holds the battery down, so carefully pry it open. You may need to use some force.

Step 5 — Speakers



- The speakers are marked in red.
- Disconnect the speaker connections.
- Remove the speakers.

To reassemble your device, follow these instructions in reverse order.