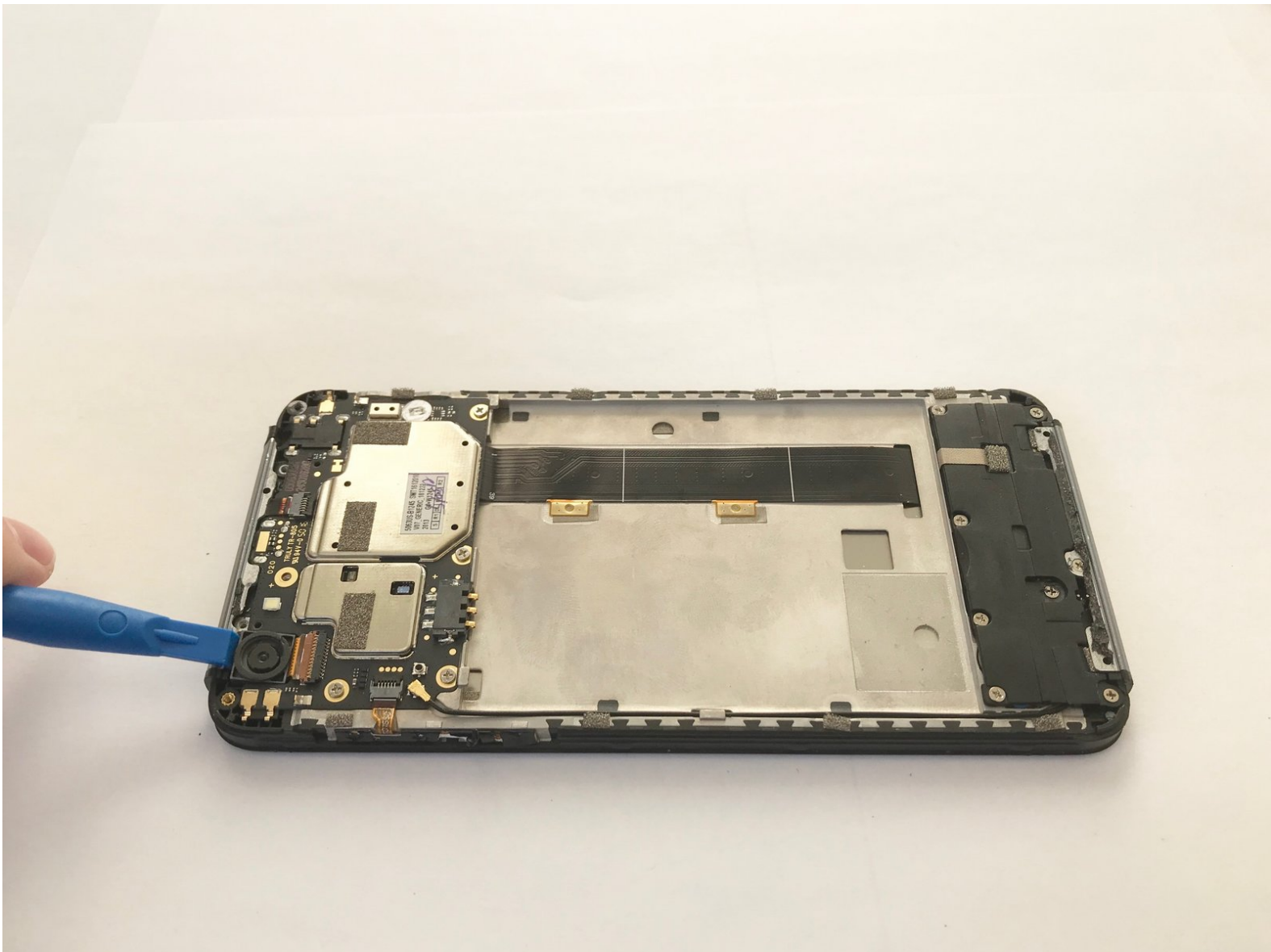




# Blu Grand M Camera Replacement

How to replace the camera in a Blu Grand M.

Written By: Kristen Gismondi



---

## INTRODUCTION

The camera may need to be replaced if you are taking pictures and the pictures turn out black or you are receiving an error message when accessing the camera. Be aware that there may be glue under some components.



### TOOLS:

- [iFixit Opening Tools](#) (1)
  - [Phillips #000 Screwdriver](#) (1)
  - [Tweezers](#) (1)
-

## Step 1 — Battery



- Remove the two plastic plates with a plastic opening tool.

## Step 2



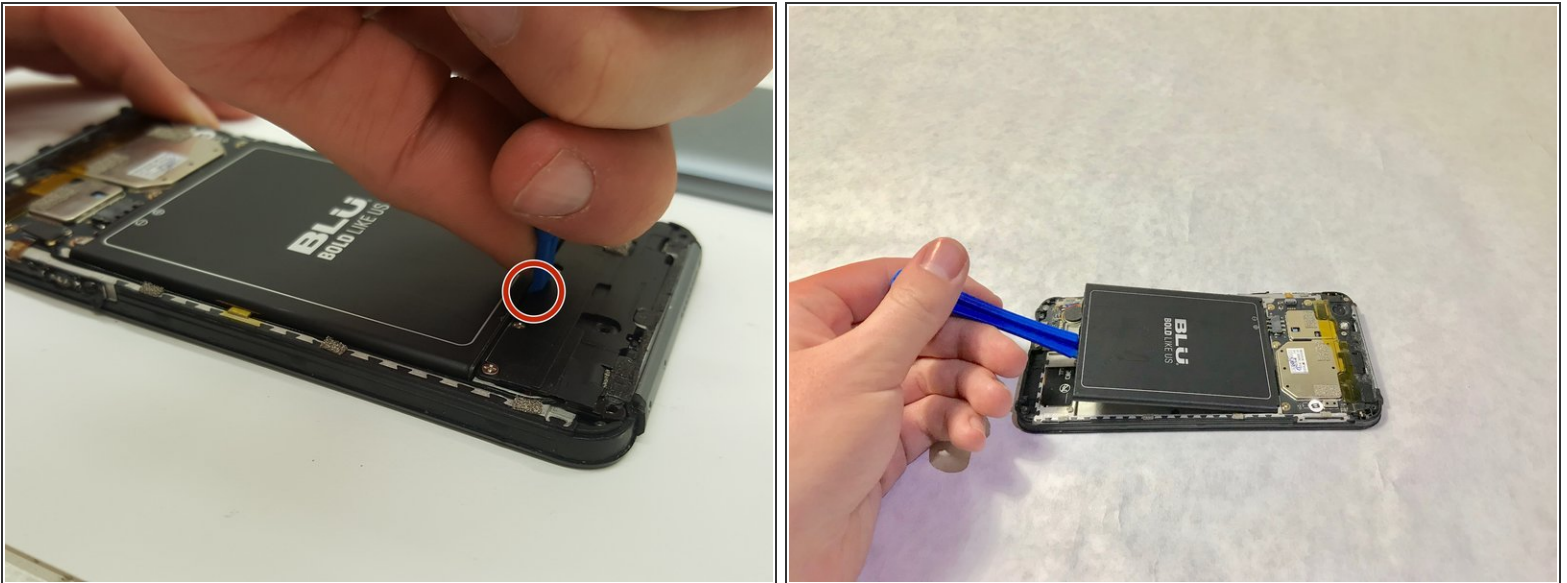
- Using a Phillips #000 screwdriver, remove the 3mm screws. Be sure to do this for the top and bottom of the phone.

## Step 3



- Remove SIM card tray with paperclip or SIM card tray removal tool.
- Push down on the phone beside the camera and up on the backplate with your thumbs to remove the back plate. Remove adhesive if necessary.

## Step 4



- i** There is a patch of adhesive underneath the battery, which can make it difficult to remove.
- Place the plastic opening tool in the highlighted indent, and push up on the battery to remove it.

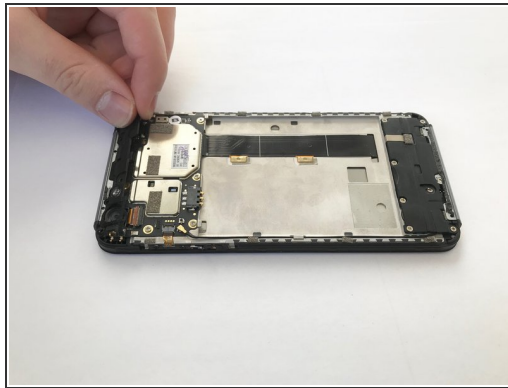
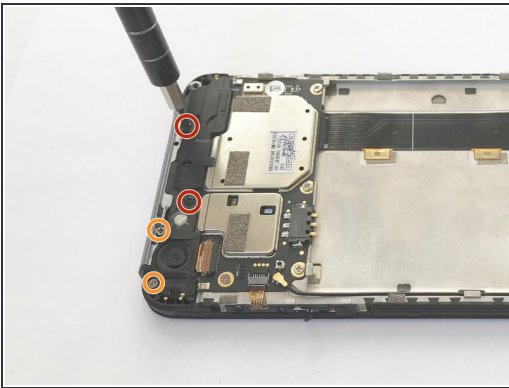


## Step 5 — Plastic Plate



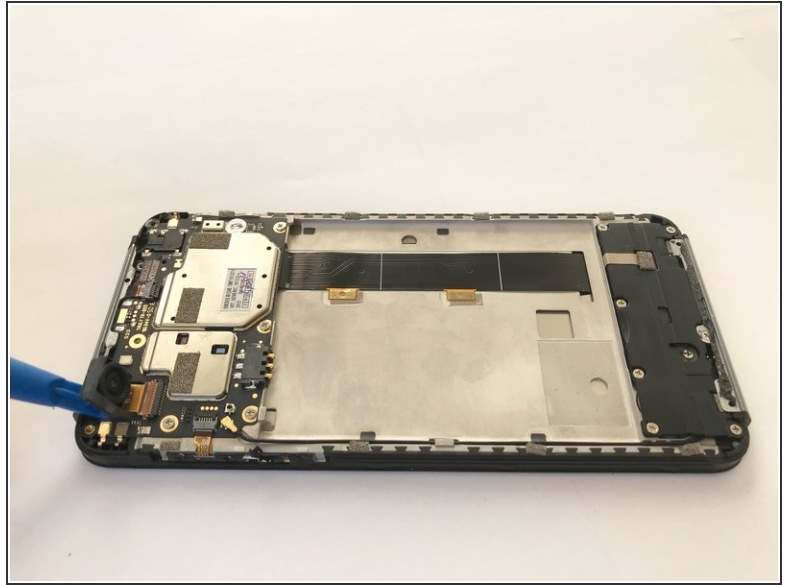
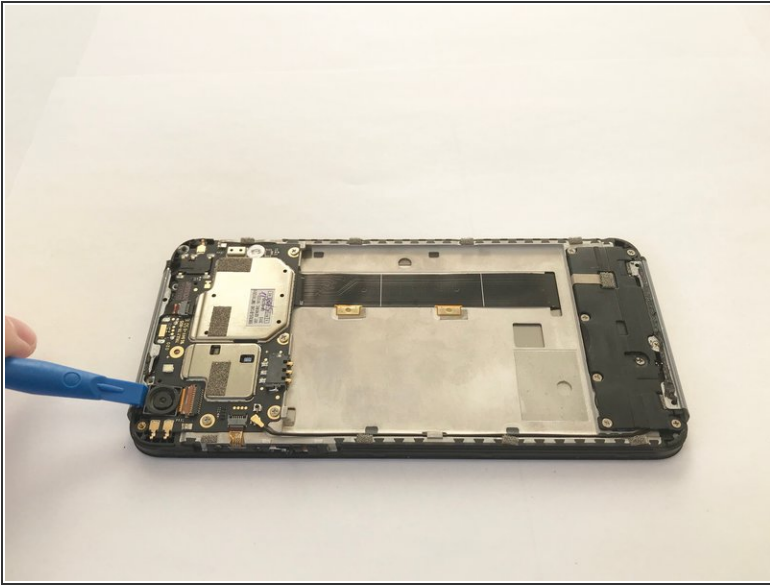
- Remove the yellow plastic tape using a pair of tweezers.

## Step 6



- Use a Phillips #000 screwdriver to remove two black 4.0mm screws.
- Use a Phillips #000 screwdriver to remove 2 silver 4.0mm screws
- Remove the plastic cover along the top by tugging on it on the corner as shown.

## Step 7 — Camera



- Use the plastic opening tool to lift the camera out.

To reassemble your device, follow these instructions in reverse order.