



Toshiba Satellite C55D-A5108 Wi-Fi Card Replacement

If you're experiencing unstable internet...

Written By: Ryan Smith



INTRODUCTION

If you're experiencing unstable internet connections, not seeing available networks, or you see an error pop-up message on your Toshiba Satellite laptop, use this guide to replace the Toshiba Satellite C55D-A5108 Wi-Fi card.

A Wi-Fi card is for enabling a wireless internet connection from your computer to a wireless connection network.

In this guide, you will be removing the battery, hard drive, and back cover of your laptop. You will also be putting the components back together.

After performing this replacement, you should experience stable internet connections.

TOOLS:

Phillips #0 Screwdriver (1)
Phillips #1 Screwdriver (1)
Spudger (1)

PARTS:

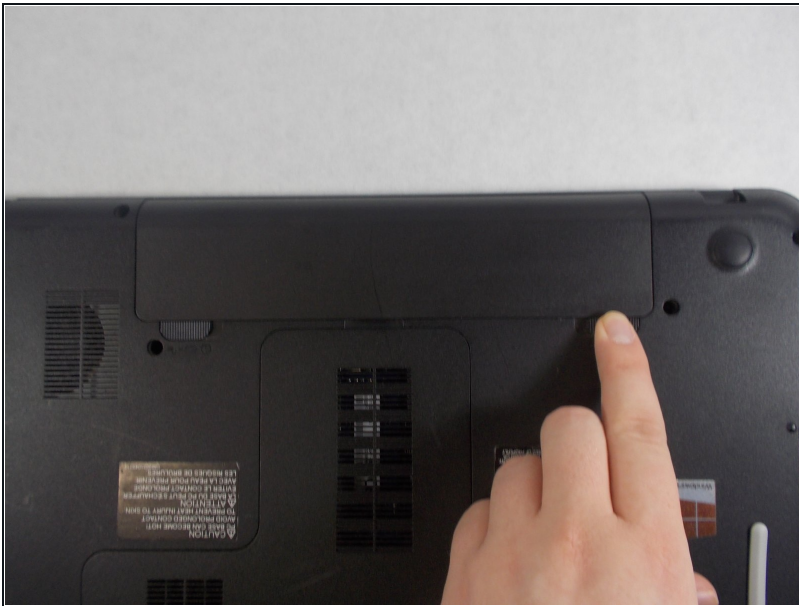
AzureWave 802.11 bgn + 802.15 BT
Combo WiFi Wireless Card AW-
NB087H RT3290 C3 (1)

Step 1 — Battery



- Flip over the device so that the model stickers are facing up.

Step 2



- Move the right notch to the unlock position by sliding it to the right.

Step 3



- Hold the left notch in an unlocked position with one hand and use the other hand to slide the battery out.

Step 4 — Hard Drive



- Remove the Phillips #0 screw from the memory cover.

Step 5



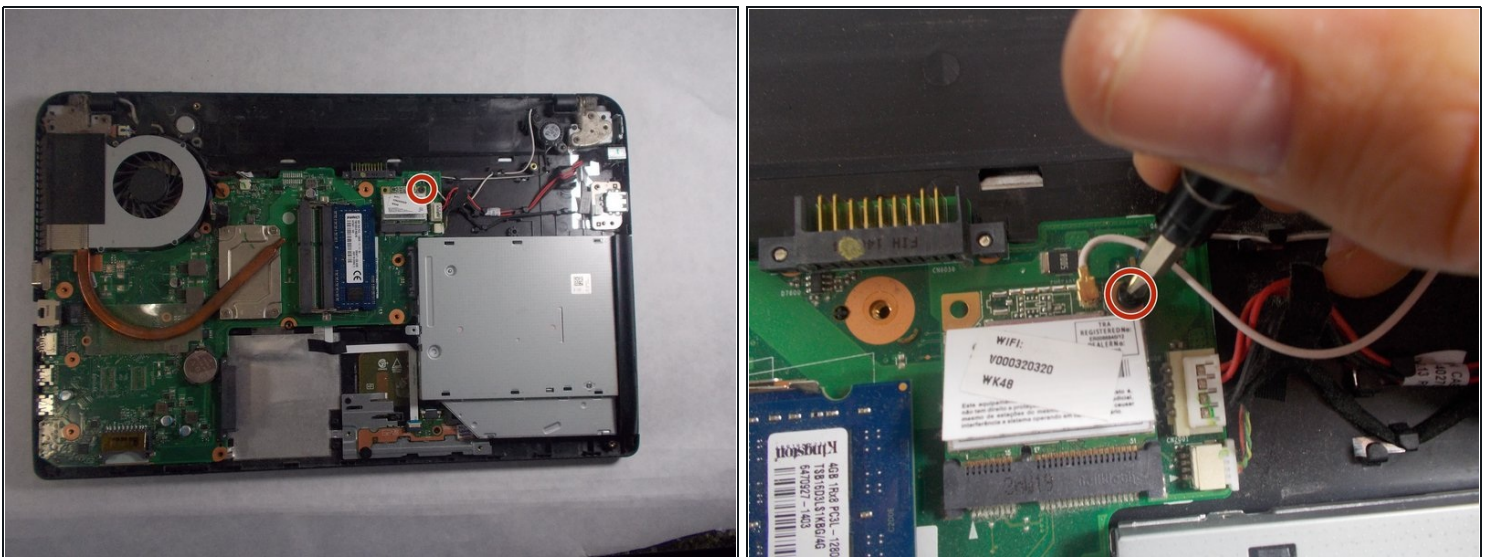
- Grasp the side of the hard drive opposite the circular battery, and carefully pull out the drive by moving it away from the circular battery.

Step 6 — Back Cover



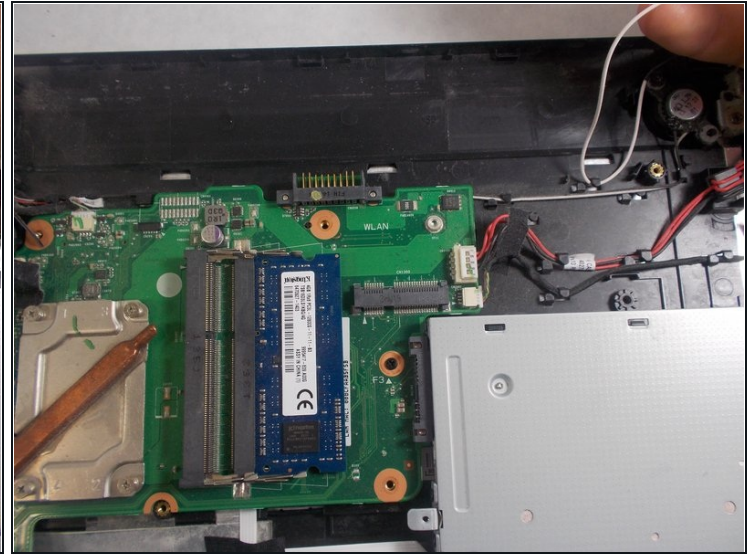
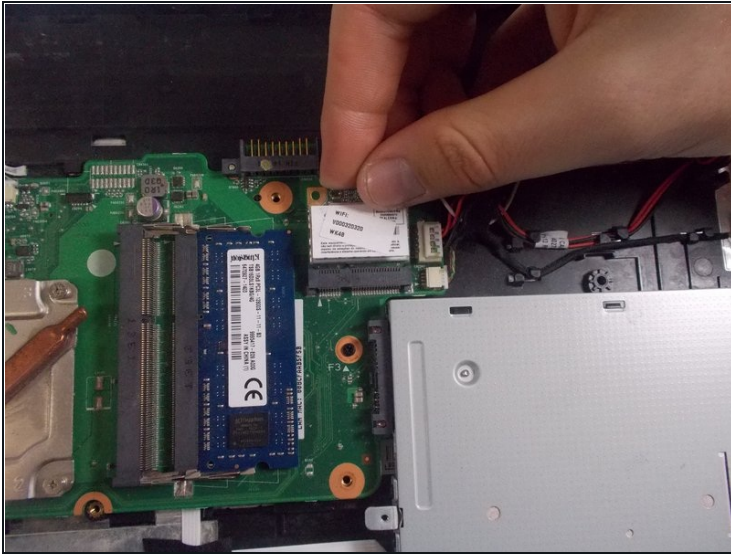
- Remove the 16 screws holding the back cover with a Phillips #0 screwdriver.
- Pry the cover off with an opening tool.
- Gently remove the cover with your hands and place to the side.

Step 7 — Wi-Fi Card



- Remove the single screw securing the Wi-Fi card using a Phillips #0 screwdriver.

Step 8



- The card will pop up; gently pull the card out of the port.
- Unplug the wireless antenna cables attached to the card.
- ☒ Remember how the cables were connected to assure you do not cross the Bluetooth and wireless connections by accident.

To reassemble your device, follow these instructions in reverse order.