



Google Pixel 3 XL Loudspeaker Replacement

This repair guide was authored by the iFixit...

Written By: Arthur Shi



INTRODUCTION

This repair guide was authored by the iFixit staff and hasn't been endorsed by Google. Learn more about our repair guides [here](#).

This guide shows how to remove and replace the loudspeaker module for a Google Pixel 3 XL.

The loudspeaker is sealed against the frame with an adhesive gasket. If you remove the loudspeaker, the Pixel will no longer be retain its water resistance.



TOOLS:

- [iOpener](#) (1)
- [Suction Handle](#) (1)
- [Tweezers](#) (1)
- [Spudger](#) (1)
- [T3 Torx Screwdriver](#) (1)
- [iFixit Opening Picks \(Set of 6\)](#) (1)



PARTS:

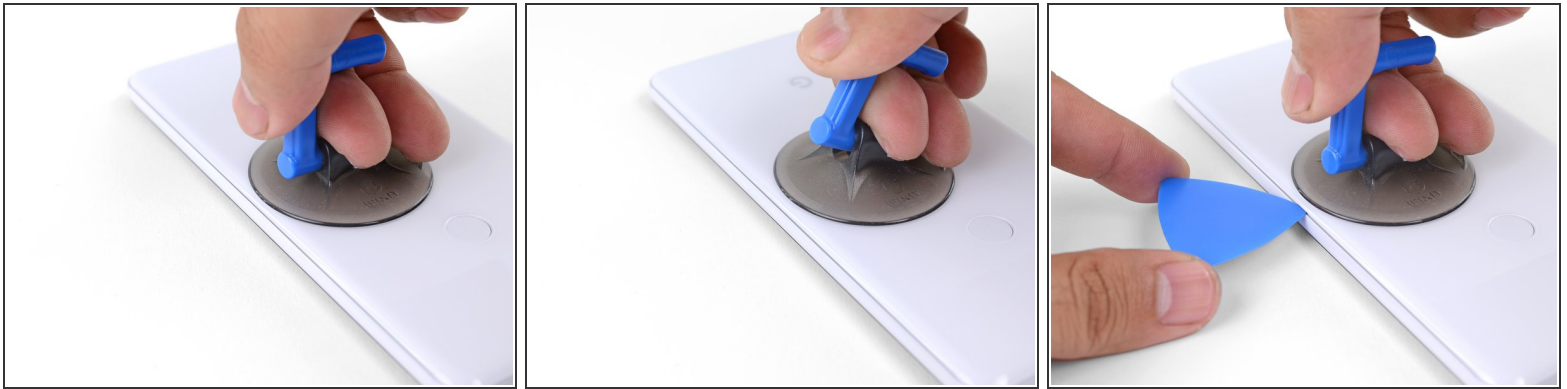
- [Google Pixel 3 XL Back Cover Adhesive - Genuine](#) (1)

Step 1 — Heat the edge of the back cover



- [Heat an iOpener](#) and apply it to the right edge of the back cover for a minute.
- ⓘ A hair dryer, heat gun, or hot plate may also be used, but be careful not to overheat the phone—the display and internal battery are both susceptible to heat damage.
- While you wait, note the following areas on the back cover:
 - Strong adhesive—there are large patches of adhesive near the bottom of the phone.
 - Fingerprint sensor cable—be careful not to slice through the cable as you pry

Step 2 — Create a gap under the back cover



- Apply a suction cup to the heated edge of the back cover, as close to the edge as possible.
- Pull up on the suction cup with strong, steady force to create a gap.
 - Depending on the age of your phone, this may be difficult. If you are having trouble, apply heat to the edge and try again.
- Insert the point of an opening pick into the gap.

Step 3 — Loosen the right edge adhesives



- Slide the opening pick along the right edge to slice through the adhesive.
- The adhesive gums up and becomes hard to slice once it cools. If that happens, re-apply heat to the edge to make slicing easier.
- Once you have sliced through the edge, leave an opening pick in the seam to prevent the adhesive from re-sealing.

Step 4 — Heat the bottom edge of the back cover



- Apply a heated iOpener to the bottom of the back cover for a minute.

Step 5 — Slice through the bottom adhesives



- Use an opening pick to slice around the bottom right corner and continue along the bottom edge of the phone.
- ⓘ Work slowly as you slice around the corner to prevent the panel from cracking. If the slicing becomes hard, re-apply heat.
- Leave a pick in the edge to prevent the adhesive from re-sealing.

Step 6 — Slice through the remaining edges



- Continue heating and slicing the remaining edges of the phone.
- Be careful as you slice along the left edge of the phone. If your pick feels like it's stuck near the top, you may have snagged the fingerprint sensor. Retract the pick out of the seam slightly and try again.
- Be sure to cut through the thick portions of adhesive near the bottom and right edge of the phone.

Step 7 — Slice through the leftover adhesive



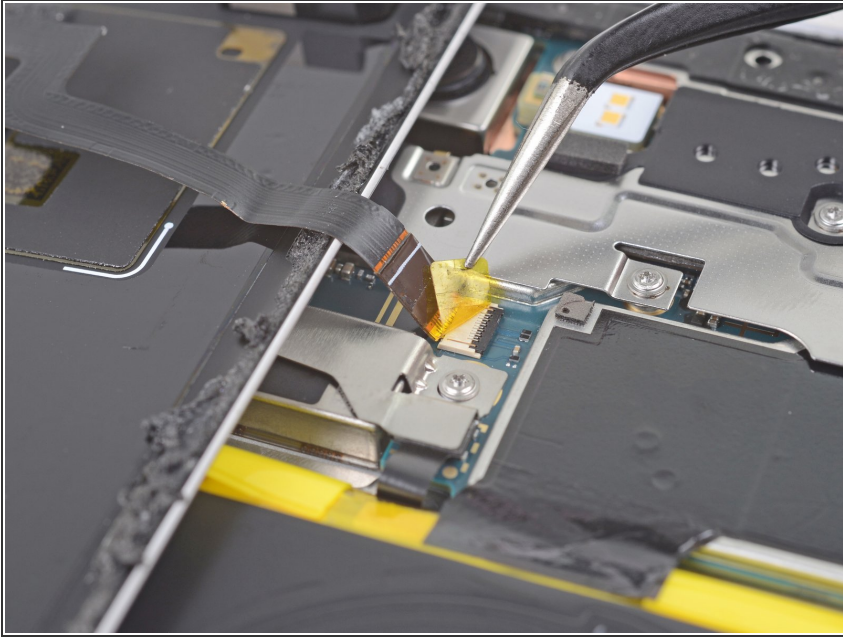
- Gently pry up the right edge of the back cover.
- Use an opening pick to slice through any remaining adhesive along the edges.

Step 8 — Swing open the back cover



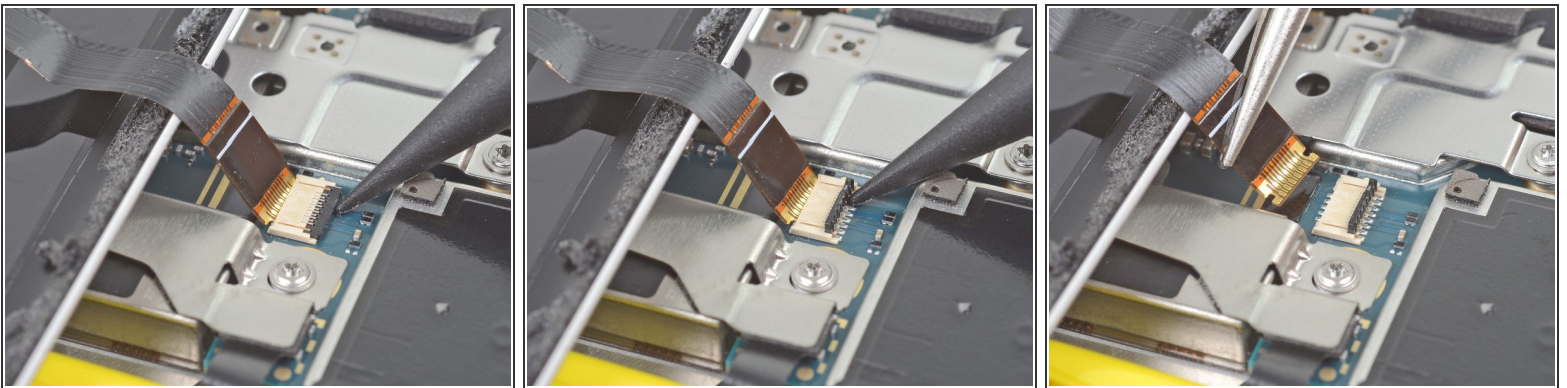
- Swing the right edge of the back cover upwards and rest the flipped panel along the left side of the phone.
- ⓘ Be sure to maintain slack on the fingerprint sensor cable and prevent it from being pinched.
- ✦ During reassembly, this is a good point to power on your phone and test all functions before sealing it up. Be sure to power your phone back down completely before you continue working.
- ✦ During reassembly, [follow this guide](#) to install custom-cut adhesives for your back cover.
- ✦ If you replaced the fingerprint sensor, you'll need to use [this software tool](#) to make the phone recognize the new sensor.

Step 9 — Remove the fingerprint sensor tape



- Use tweezers to carefully peel up the yellow tape over the fingerprint sensor connector.

Step 10 — Disconnect the fingerprint sensor



- Use the point of a spudger to carefully flip up the black lock bar on the fingerprint sensor's ZIF socket.
- Grasp the cable's tab with your fingers or tweezers and gently walk the flex cable out of the socket.
 - ⓘ To prevent shorting, be careful not to touch the metal contacts on the flex cable with your tweezers.

Step 11 — Remove the back cover



- Remove the back cover.
- ☑ Follow [this guide](#) to correctly apply new back cover adhesive.

Step 12 — Remove the metal cover bracket screws



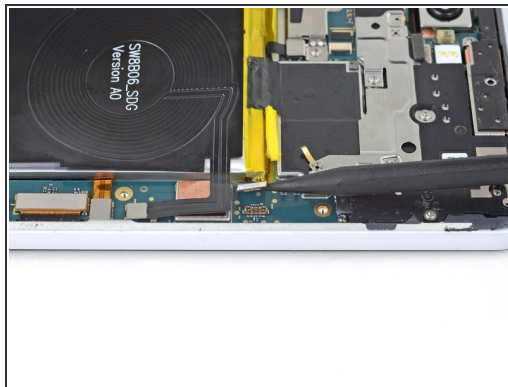
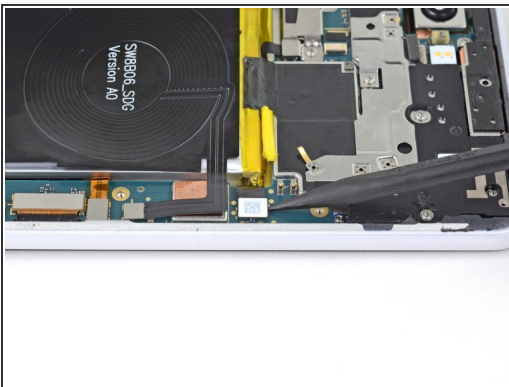
- Remove the following four T3 screws securing the metal cover bracket:
 - Three 4 mm long screws
 - One 3 mm long screw
- ☑ Throughout this repair, [keep track of each screw](#) and make sure it goes back exactly where it came from.

Step 13 — Remove the metal cover bracket



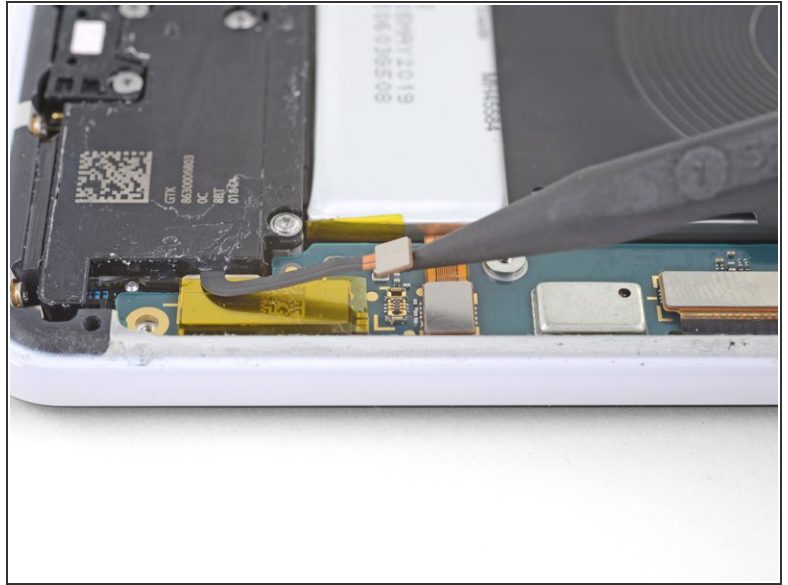
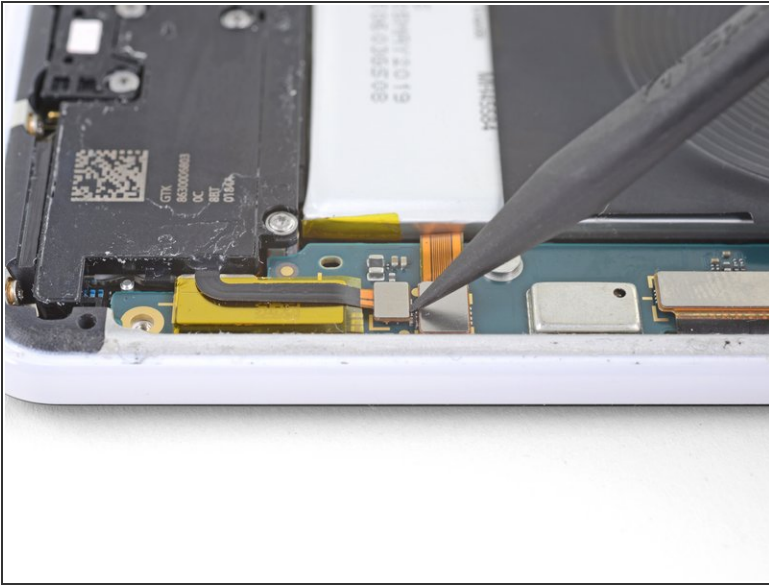
- Insert the flat end of a spudger underneath the top right edge of the metal bracket and pry up to loosen it.
- Remove the metal cover bracket.

Step 14 — Disconnect the battery



- Use the point of a spudger to pry up and disconnect the battery connector from its socket.
⚠ Do not use metal tools to to disconnect the battery, or you will risk shorting the battery.
- Bend the battery cable such that the connector will not accidentally touch the socket.

Step 15 — Disconnect the loudspeaker



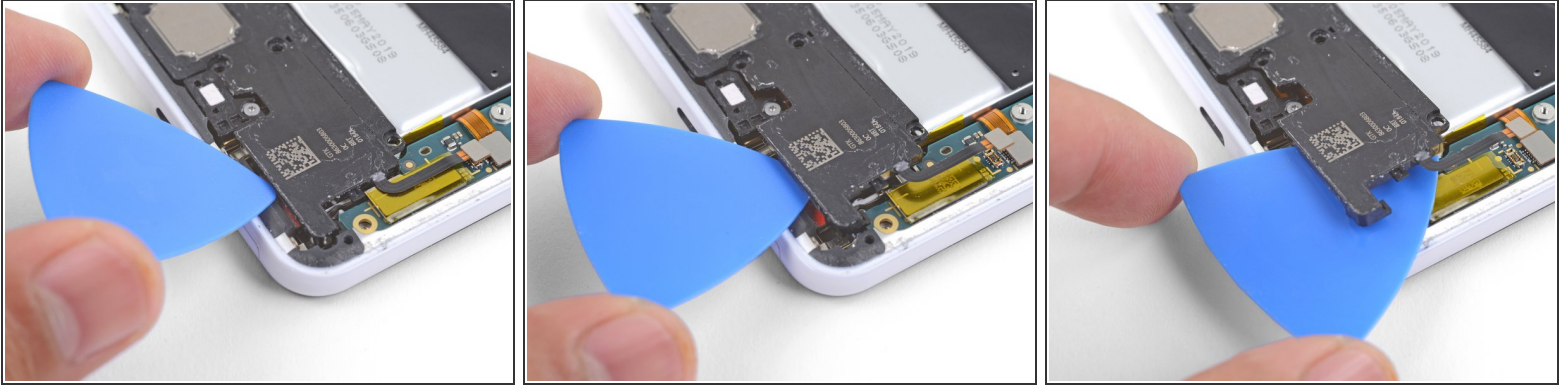
- Use the point of a spudger to pry up and disconnect the loudspeaker connector from its motherboard socket, near the bottom right edge of the phone.

Step 16 — Remove the loudspeaker screws



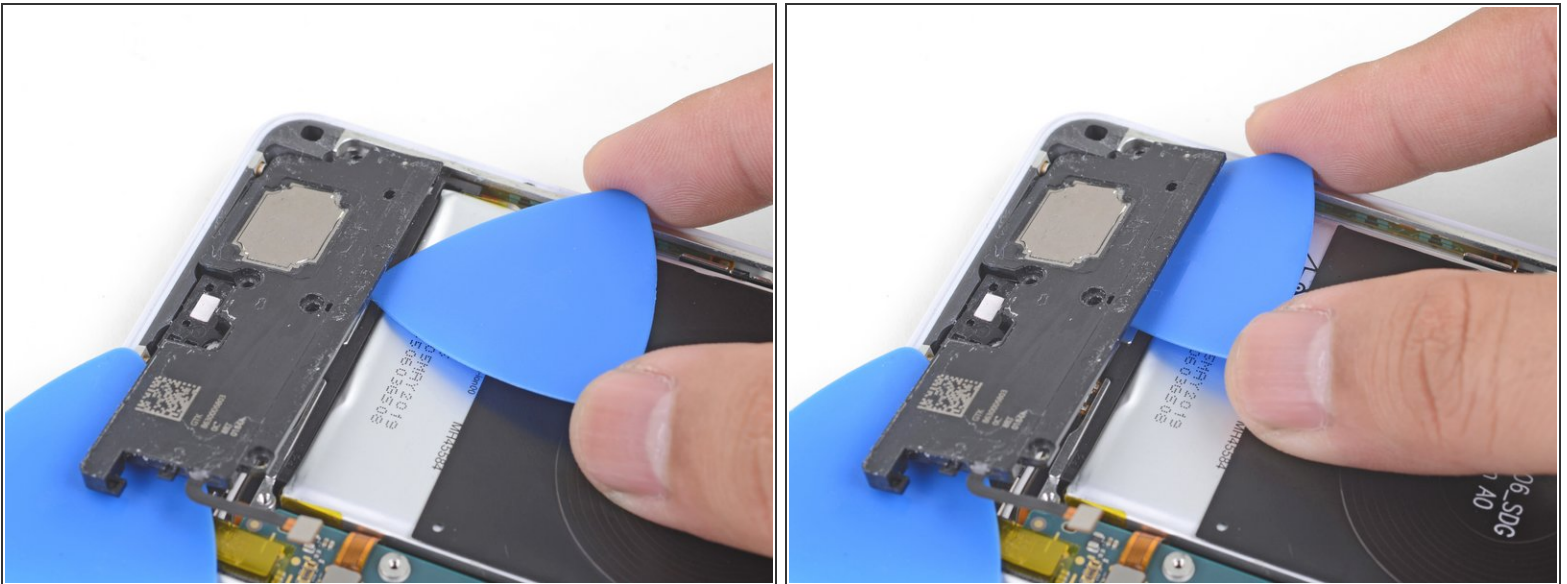
- Remove the following four T3 screws securing the loudspeaker:
 - Three 4 mm long screws
 - One 3.9 mm long screw

Step 17 — Loosen the loudspeaker



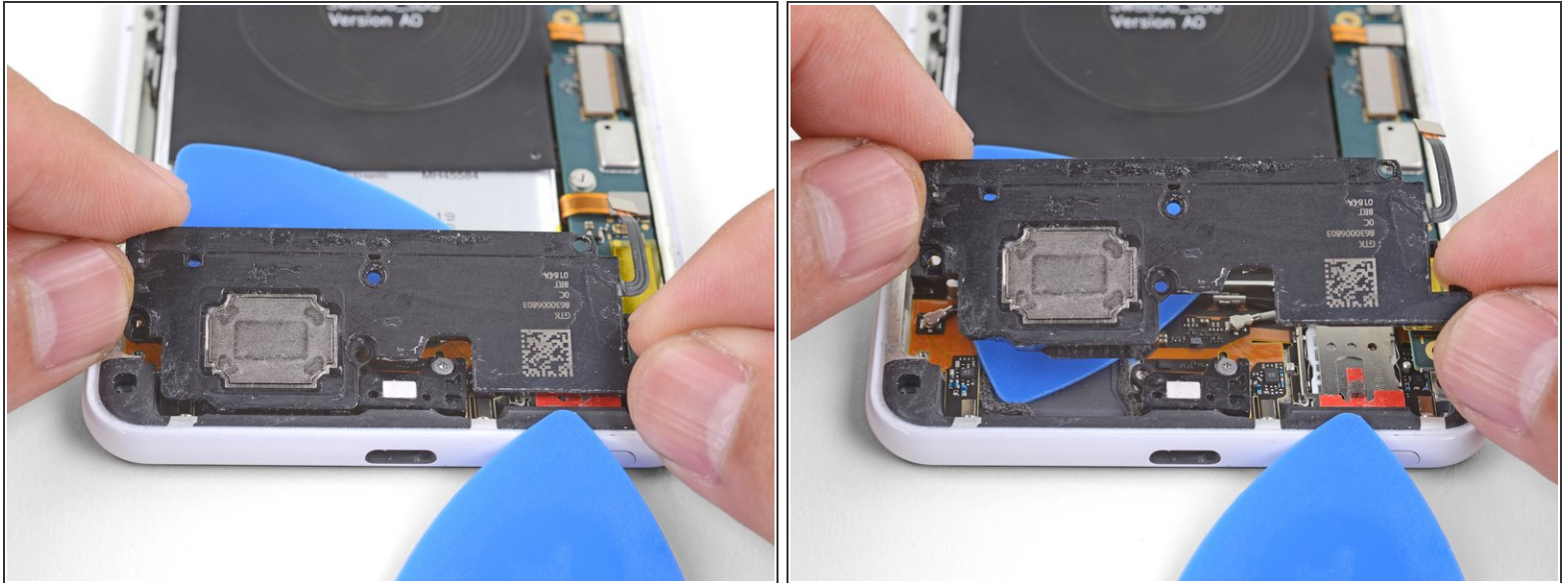
- Insert the point of an opening pick under the bottom right corner of the loudspeaker.
- Slide the pick in to loosen the right side of the loudspeaker.

Step 18



- Insert the point of an opening pick under the top edge of the loudspeaker, below the battery.
- Slide the opening pick in to slice through the adhesive gasket under the loudspeaker.

Step 19 — Remove the loudspeaker



- Lift the loudspeaker out slowly and pull it away from any remaining adhesive.
 - Remove the loudspeaker.
- ☒ Before you install a replacement loudspeaker, be sure to remove any residual adhesive from the frame.

To reassemble your device, follow these instructions in reverse order.

Repair didn't go as planned? Try some [basic troubleshooting](#), or ask our [Answers community](#) for help.