



# Altec Lansing ACS90 Speaker Teardown

This guide will illustrate how to disassemble the ACS90 Speakers. It will also discuss the internal workings of these speakers.

Written By: Joe Sandoval



---

## INTRODUCTION

The Altec Lansing ACS90 Speaker system was a popular choice for high-end computer audio in the mid 1990's. While it might be out of date by today's standards, it's still a worthwhile find for decent sound at a bargain-bin price.

---

### TOOLS:

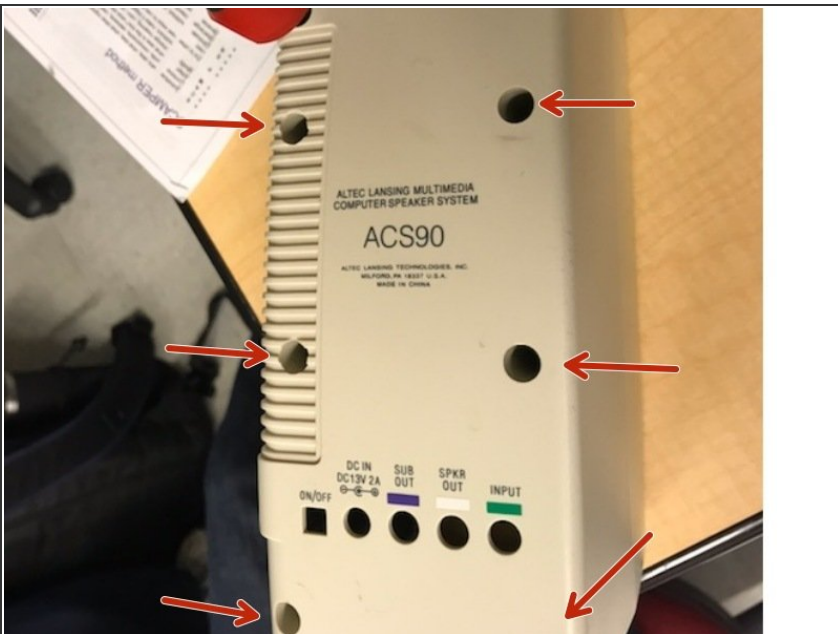
- [Phillips #2 Screwdriver](#) (1)
-

## Step 1 — Altec Lansing ACS90 Speaker Teardown



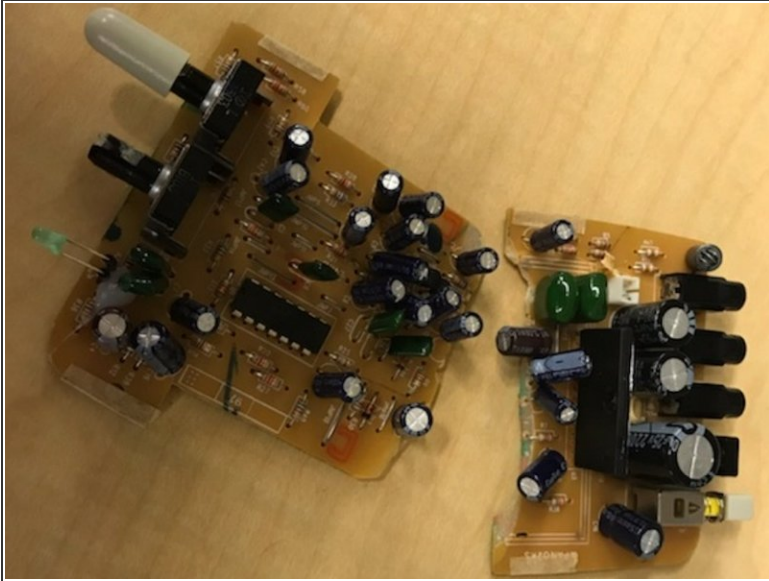
- Behold the beige wonder of the ACS90 speakers
- Because both speakers have nearly identical internals, this guide will focus on the right "source" speaker.

## Step 2



- Use a medium sized Phillips-head screwdriver that is at least 6" or longer in length to unscrew 6 screws holding the speaker together
- Pull the case apart, careful not to damage the PCB or Speaker inside

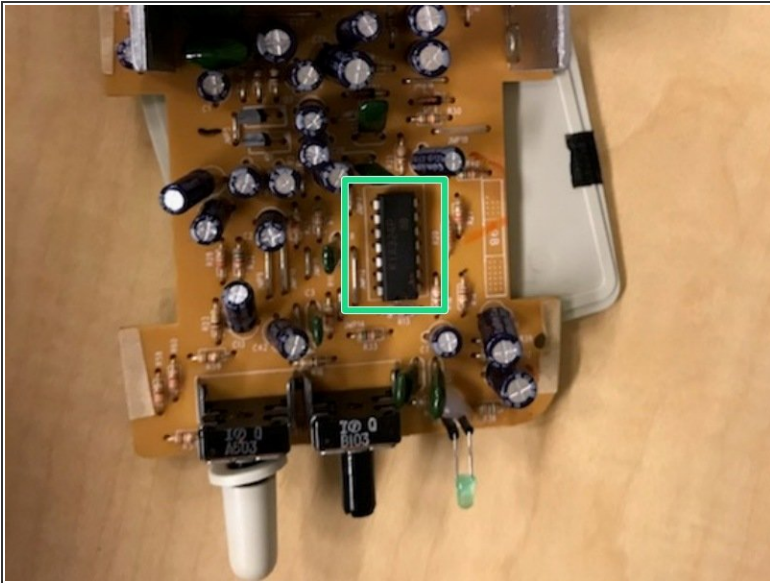
## Step 3



- Whoops! Pulled to hard and broke the PCB!
- But the 4W Speaker inside the case came out just fine!



## Step 4



- Putting the PCB back together, we see inner workings of our speaker
- Critical to the speaker are a high-current, adjustable voltage regulator
- And a dual op-amp IC
- And... that's it! The speaker's come apart and this tear down is complete!