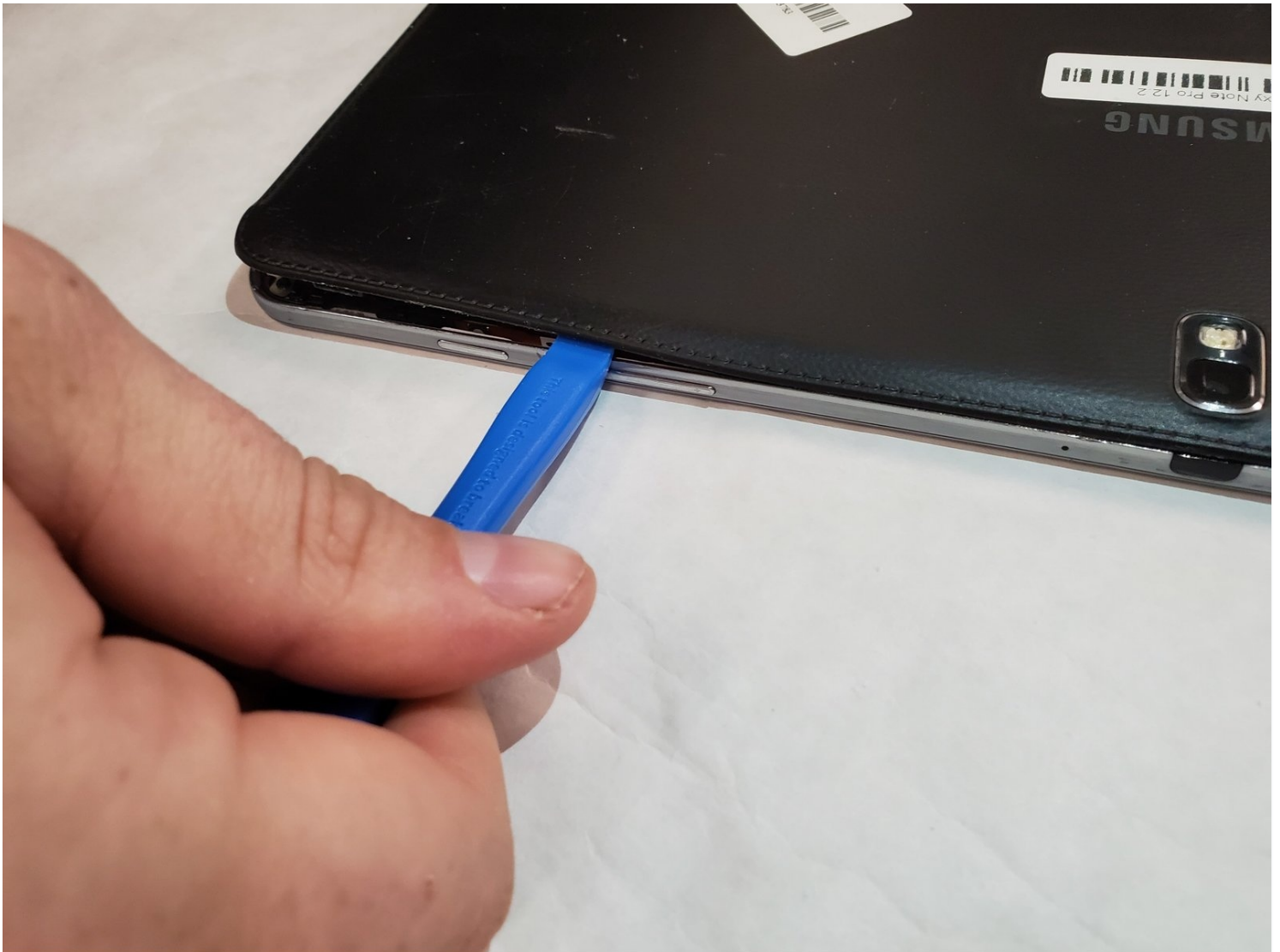




# Samsung Galaxy Note Pro 12.2 Motherboard Replacement

Replacing the motherboard of your Samsung...

Written By: La'Taja Long



# INTRODUCTION

Replacing the motherboard of your Samsung Galaxy Note Pro 12.2 (Galaxy SM-P900) device can provide faster RAM, faster data transfer, for increased performance.

The motherboard is responsible for power and communication between all of your hardware components delicately connected to it on your tablet device. This is why many hardware components need to be removed from the device before removing the motherboard. Steps 1-5 will walk you through the removal of those components.

Lastly, be sure that your device is powered off before beginning the disassembly process.



## TOOLS:

[iFixit Opening Tool](#) (1)  
[Tweezers](#) (1)  
[Phillips #00 Screwdriver](#) (1)

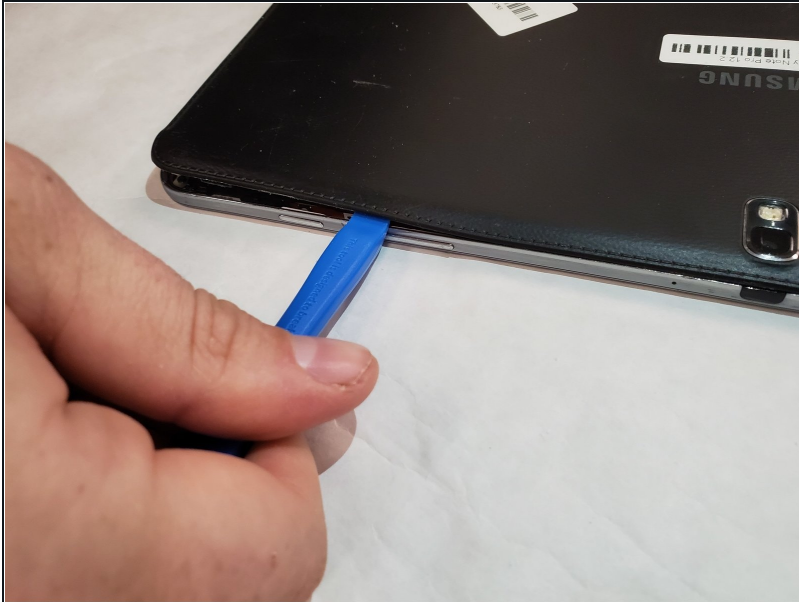


## PARTS:

[Galaxy Note Pro 12.2 \(Wi-Fi\)](#)  
[Motherboard](#) (1)

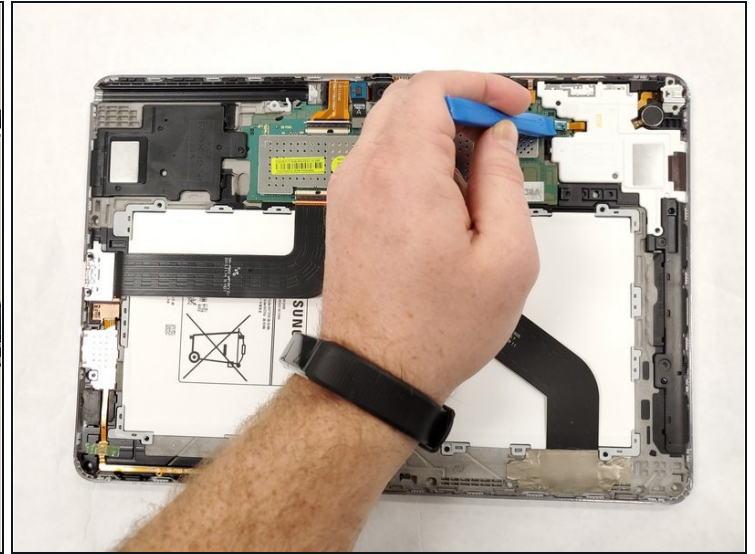
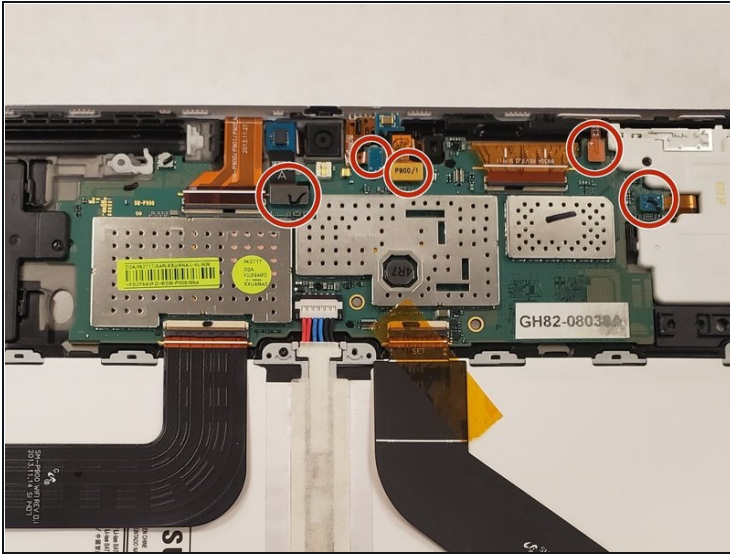
---

## Step 1 — Motherboard



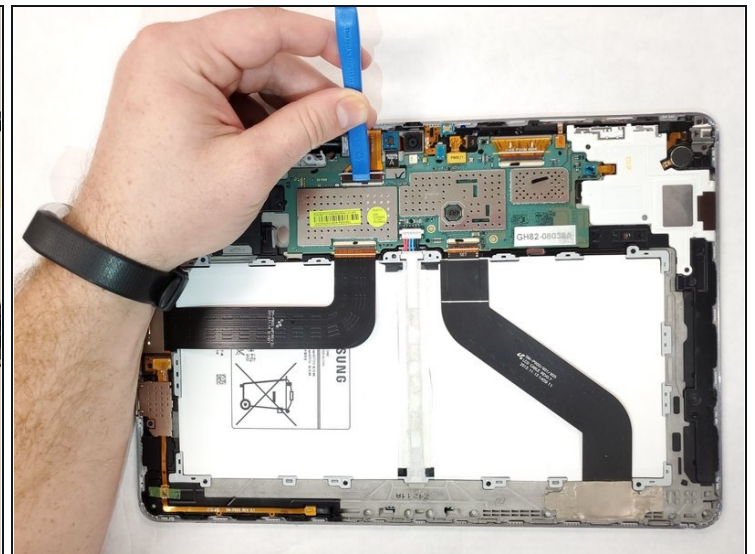
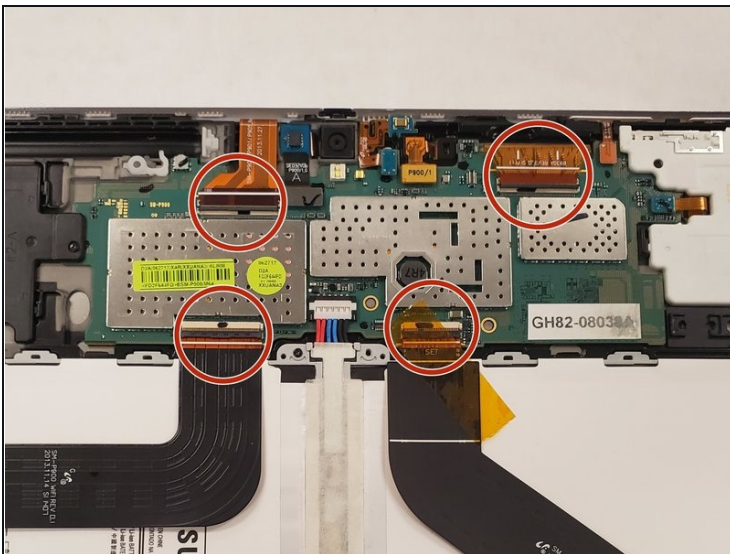
- Remove the back cover with the blue plastic opening tool.

## Step 2



- Disconnect the five base connectors from the motherboard by using the blue opening tool to carefully remove the connectors.

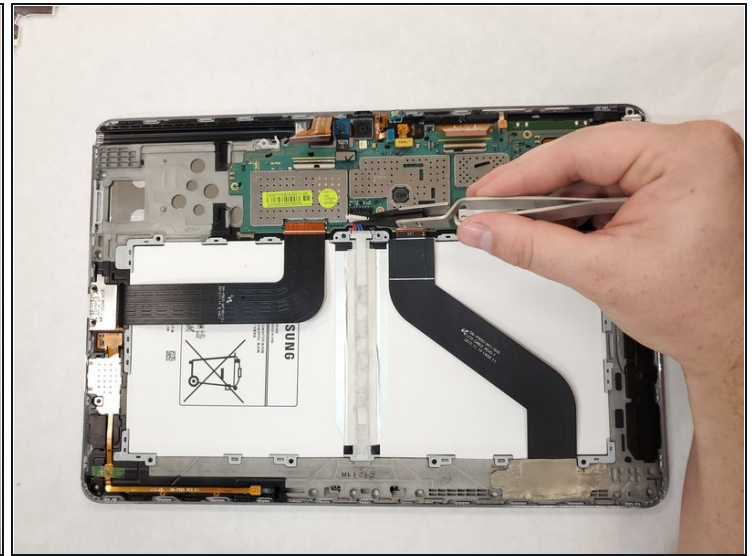
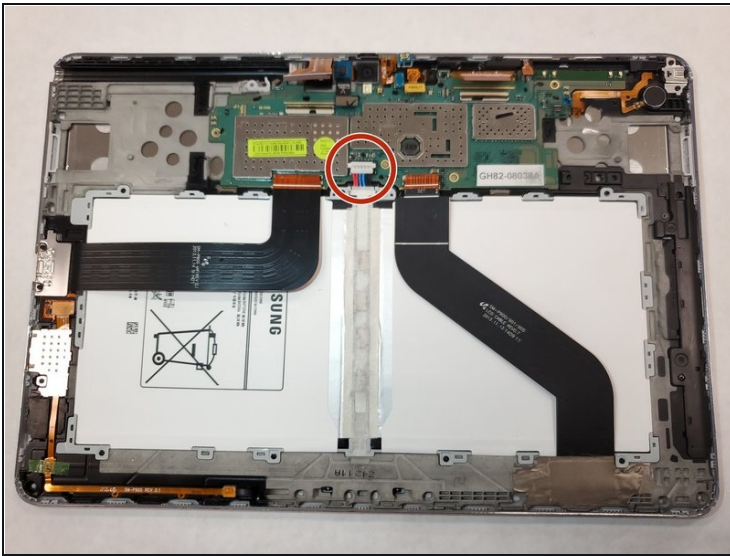
## Step 3



- ① Remove the yellow tape on the ribbon cables before attempting to disconnect them from the motherboard.
- Using the blue opening tool, pry on the black tab at the base connector of ribbon cables until it is flipped up and moves with ease. Then, pull the ribbon cable from the base connectors of the motherboard.



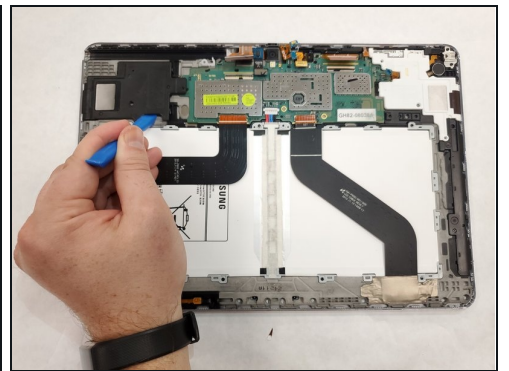
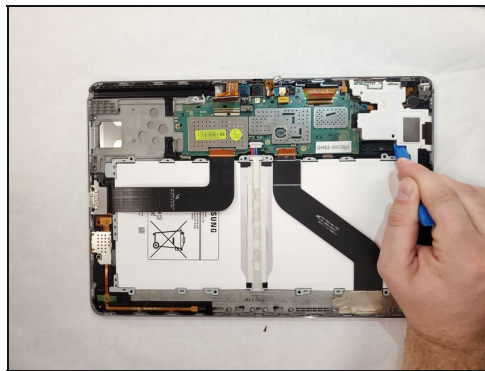
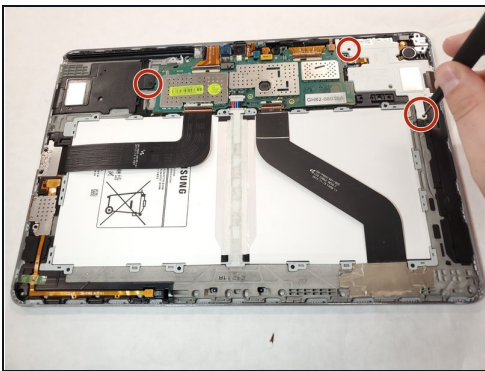
## Step 4



⚠ Potential damage to the motherboard could occur without supporting the black motherboard connector as the white cable connector is being removed.

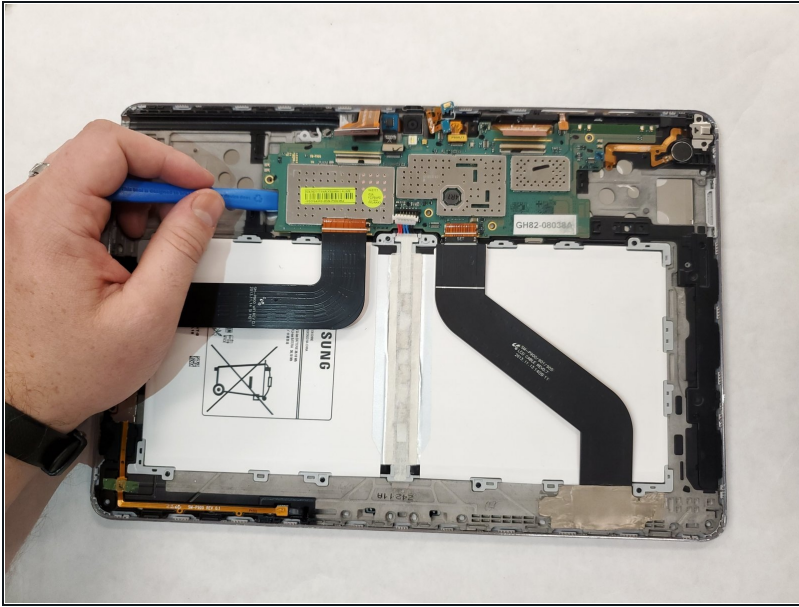
- Remove the power cable from the motherboard by prying slightly on both sides of the clip using [tweezers](#).

## Step 5



- Remove all three of the 3.0 mm screws using the Phillips #00 screwdriver.
- ① It is easiest to pry on the points depicted in the pictures for the next step.
- Use the blue plastic opening tool to pry the speakers up from the clips that hold them in place.

## Step 6



- Remove the motherboard using the blue opening tool while keeping any wires and connectors out of the way.
- ⓘ The motherboard should come out freely.

---

To reassemble your device, follow these instructions in reverse order.