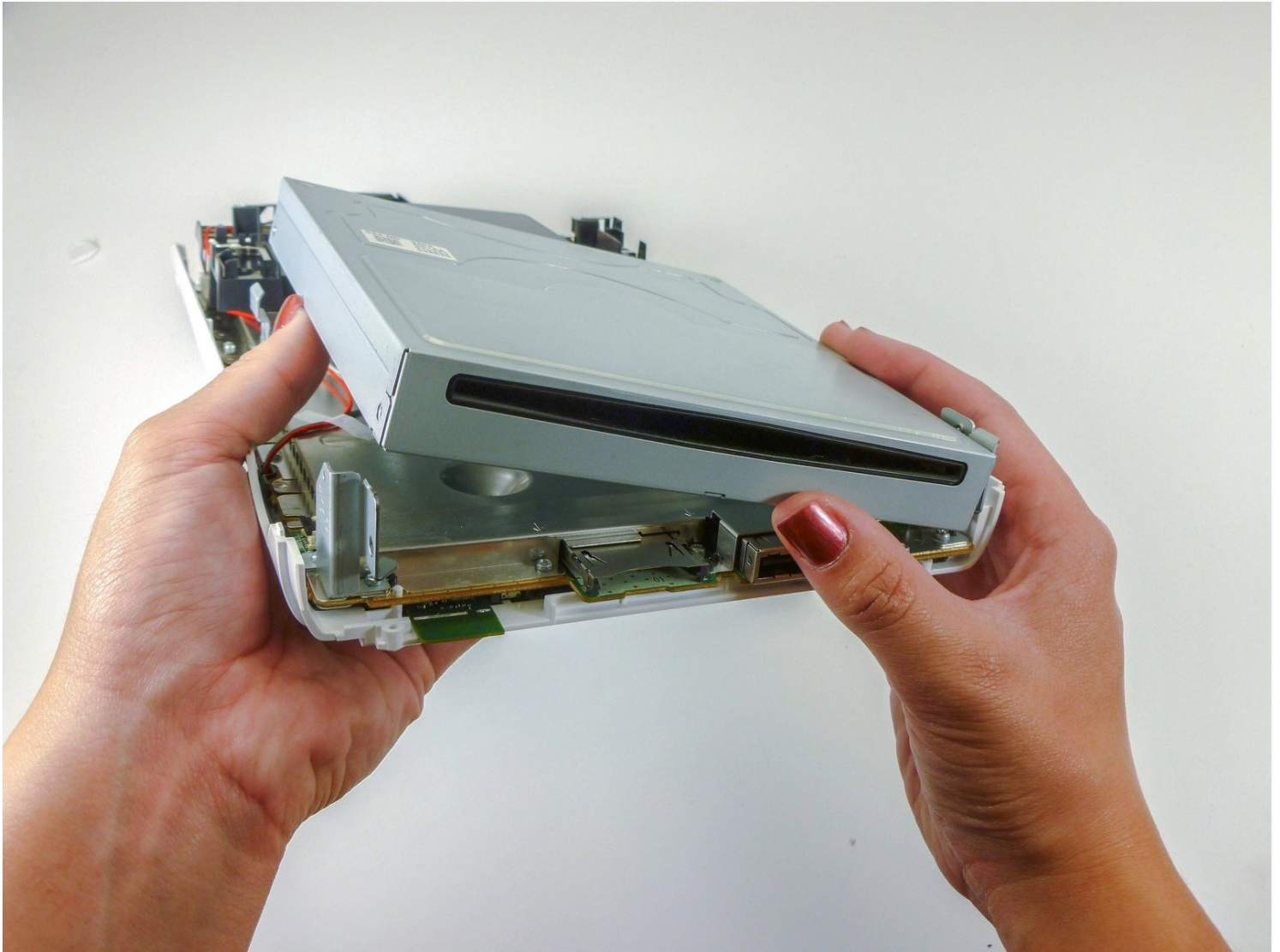




# Nintendo Wii U DVD Drive Replacement

Use this guide to install a new DVD Drive for a...

Written By: Kim Arre



# INTRODUCTION

Use this guide to install a new DVD Drive for a Nintendo Wii U.

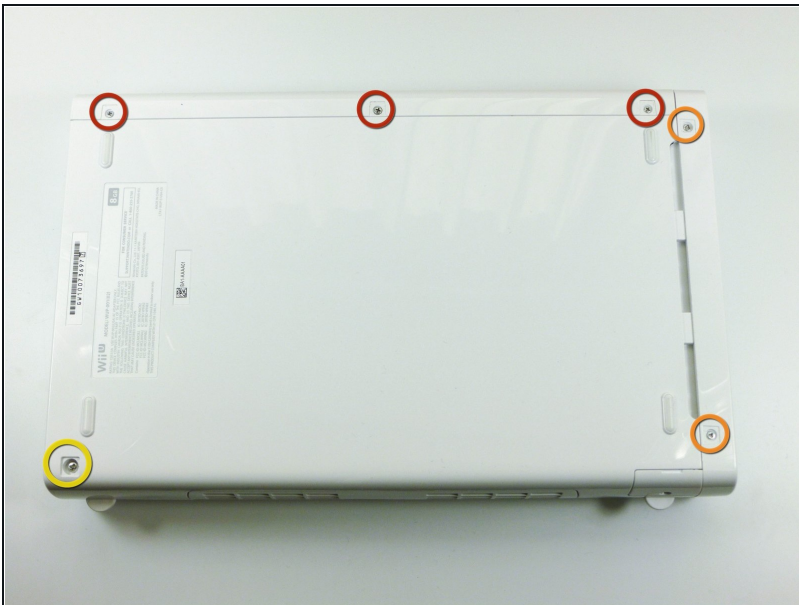
## TOOLS:

Phillips #00 Screwdriver (1)  
Spudger (1)  
Tri-point Y0 Screwdriver (1)  
Y1 Tri-point Screwdriver (1)

## PARTS:

Nintendo Wii U Motherboard & Paired Optical Drive (1)

## Step 1 — Console Outer Case



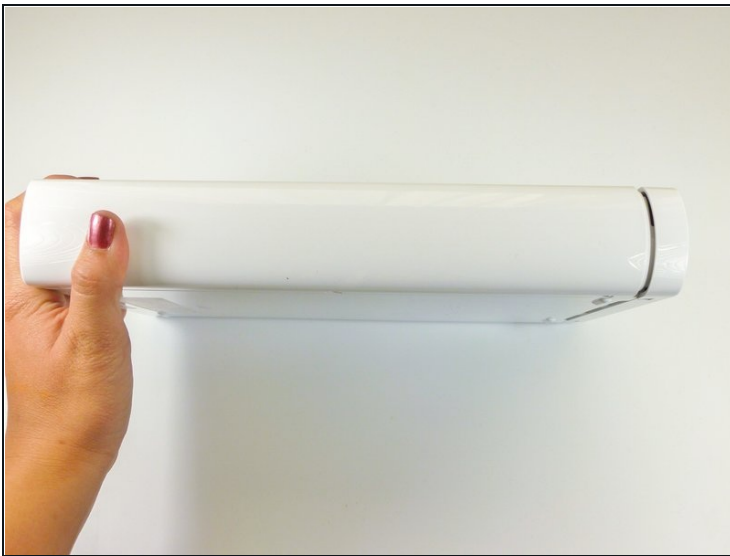
- With the bottom of the console facing up, remove the following 6 screws hidden underneath the white square stickers:
  - Three 5.1mm Phillips #000 screws
  - Two 6.1mm Tri-wing Y0 screws
  - One 13.2mm Tri-wing Y1 screw

## Step 2



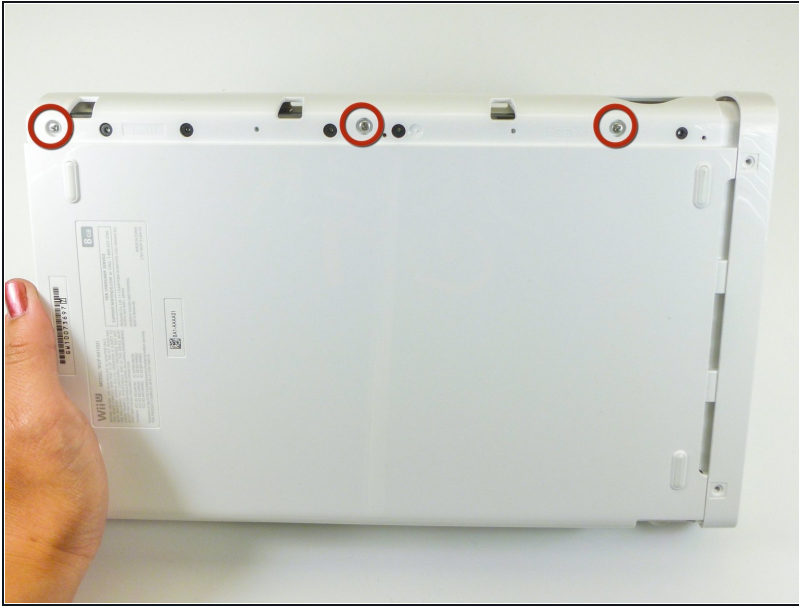
- Rotate the console 180 degrees so that the exhaust vents are facing you.
- Remove the two 7.1mm Phillips #00 screws.

## Step 3



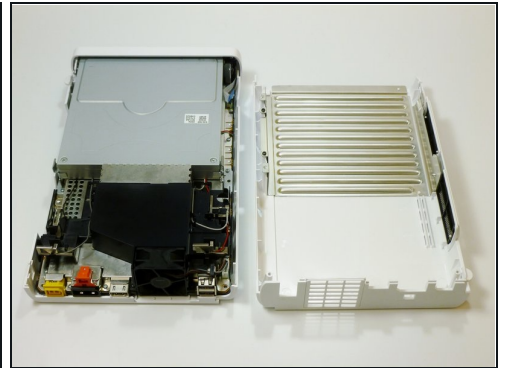
- On the side opposite of the exhaust vents, slide the cover faceplate towards the back of the console and pull upwards to release it.

## Step 4



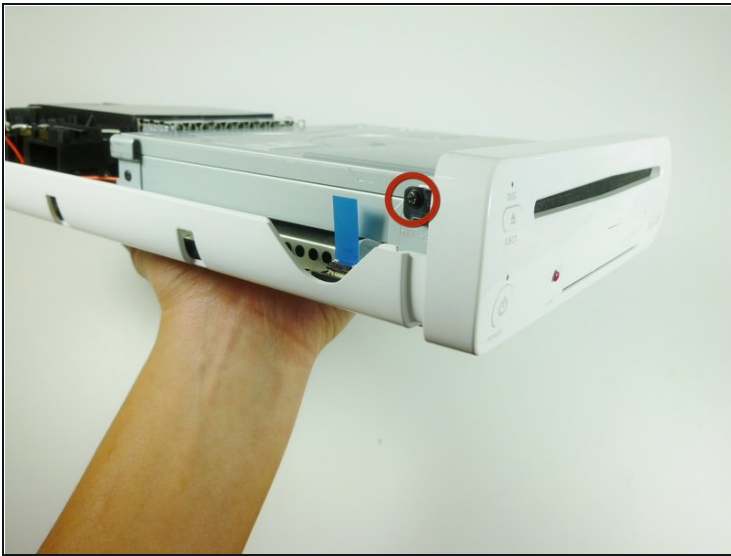
- On the bottom of the console beneath the previously removed faceplate, remove the three 13.2mm Tri-wing Y1 screws.

## Step 5



- On the back of the console, lift up and release the main top cover.

## Step 6 — Front Faceplate



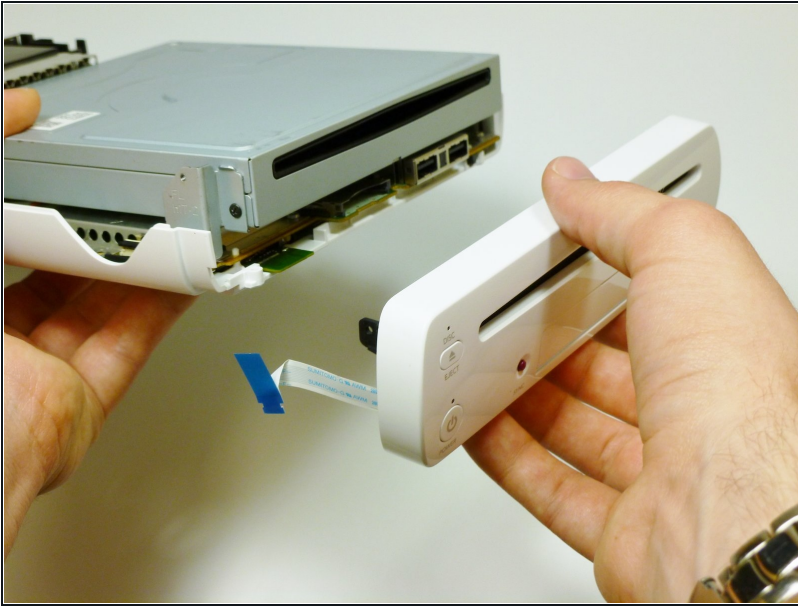
- Rotate the device so that the front plate is facing you.
- On each side of the console, remove the 3.5mm Phillips #0 screw connecting the DVD drive to the faceplate.

## Step 7



- Rotate the device so that the front plate is on the right side and the ribbon cable is visible.
- The ribbon cable is connected to the system by a latch which holds in the blue tab. Flip this latch up to unlock it.
- Lift up on the blue tab to release the ribbon cable.

## Step 8



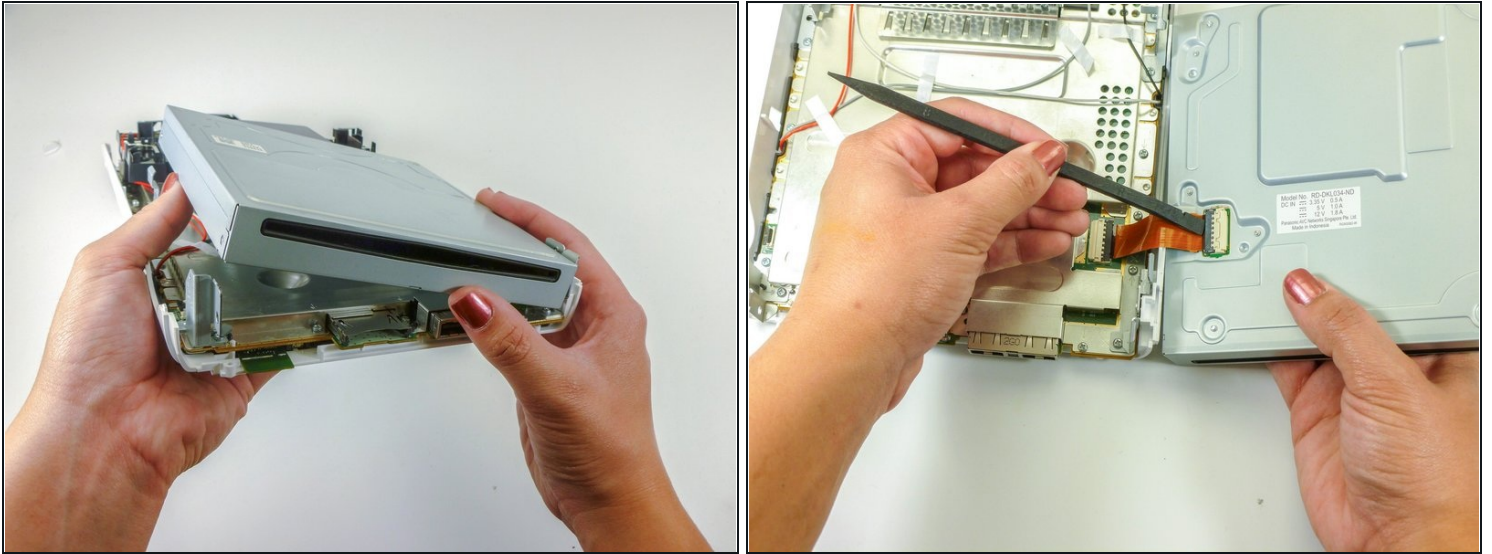
- Remove the front faceplate.

## Step 9 — DVD Drive



- On each side of the DVD drive, remove the two 4.6mm Phillips #0 mounting screws.

## Step 10

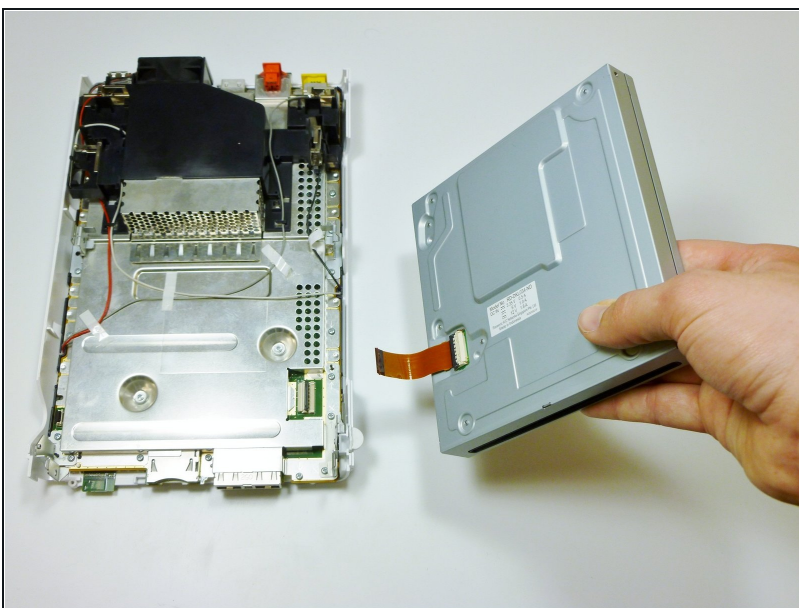


- Rotate the device so that the disc drive slot is visible.

⚠ A ribbon cable is attached to the bottom right side of the disc drive. The ribbon cable can rip if it isn't removed properly.

- Lift the disc drive out of the mount and turn over to the right so it lies like a book.
- Use a spudger to release the ribbon cable.

## Step 11



- Remove the disc drive.

---

To reassemble your device, follow these instructions in reverse order.