



LG K7 Charging Port Replacement

How to replace the charging port on a LG K7 phone.

Written By: Stephen Damm



INTRODUCTION

The charging port allows for the LG K7 to be charged. It can stop working for a number of reasons but the main two are shock and wear. It can be replaced in about 30 minutes with the guide below. A soldering iron will be necessary which should be used with caution.



TOOLS:

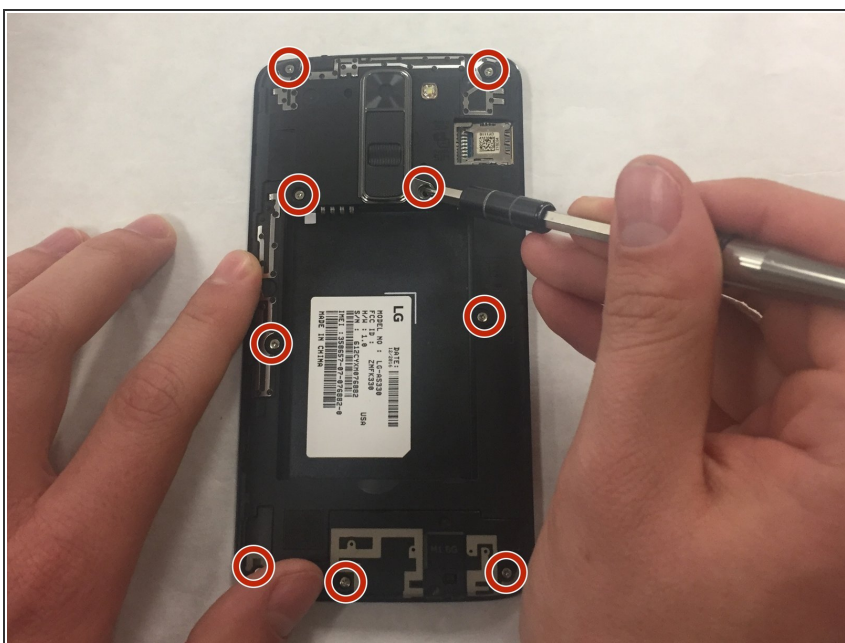
- [Soldering Iron](#) (1)
 - [iFixit Opening Tools](#) (1)
 - [Phillips #000 Screwdriver](#) (1)
-

Step 1 — Charging Port



- Remove the back cover by using the plastic opening tool.
- Remove battery by using the plastic opening tool.

Step 2



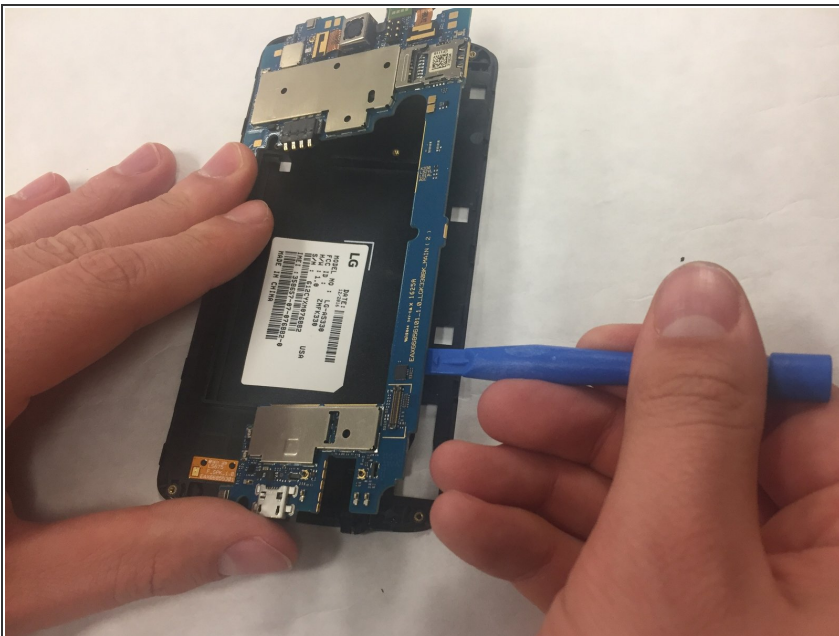
- Remove the nine 4mm Phillips #000 screws.
- i The cover should lift off easily once the screws are out.
- ⚠ Be gentle with the frame when removing it. The plastic is very thin and can easily break.

Step 3



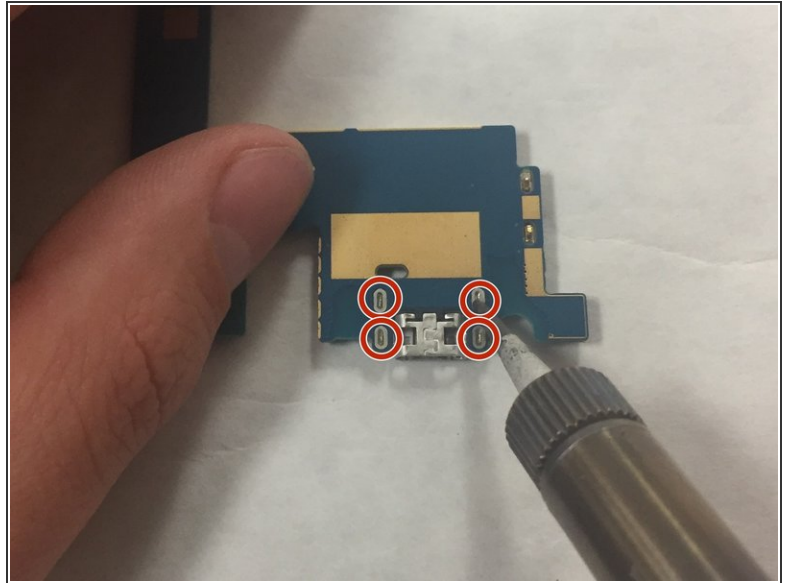
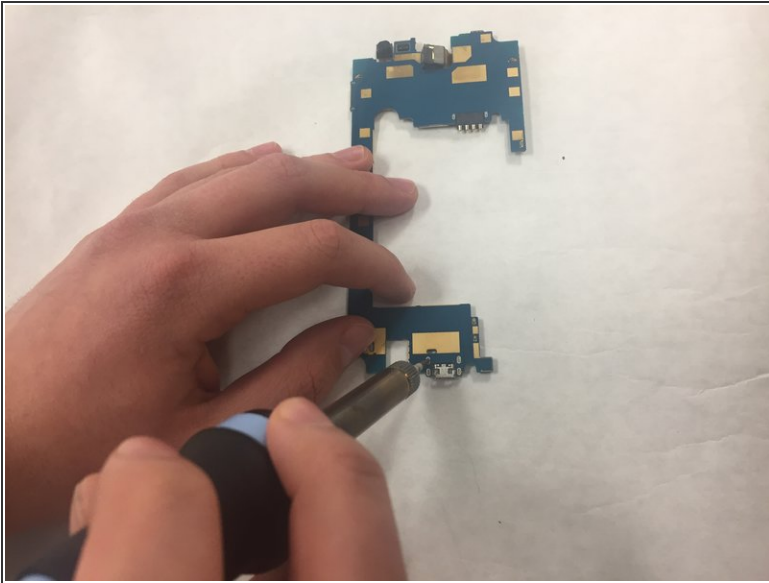
- Place the plastic opening tool between the screen and the plastic edge of the phone and pry carefully until screen pops off.
- ⓘ The frame is held to the rest of the phone with plastic tabs. Release each tab one at a time around the phone for the easiest removal.
- ⚠ Do not bend the outer frame or screen when separating them. This will severely damage the phone.

Step 4



- Place the plastic opening tool between the blue motherboard and black plate and pry until the motherboard pops off.

Step 5



- Heat up the four connection points using a soldering iron.
 - Once hot, gently push the port off.
- ⚠ Soldering iron is hot! Use with caution.
- ⚠ Be careful not to touch other components with the soldering iron.

To reassemble your device, follow these instructions in reverse order.