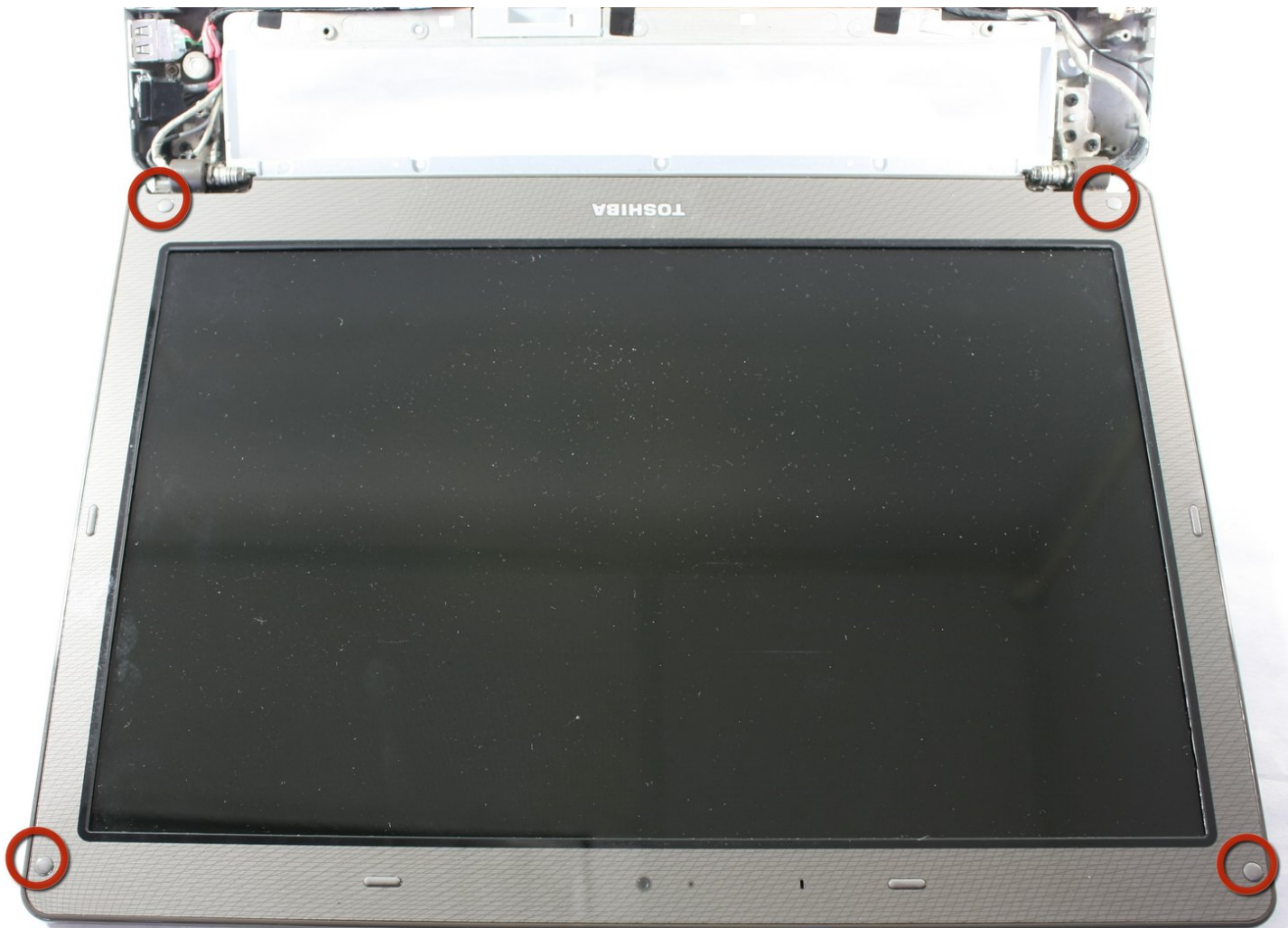




Toshiba Satellite E105-S1602 Display Replacement

This guide is designed to help you quickly and...

Written By: Ian Washburne



INTRODUCTION

This guide is designed to help you quickly and safely replace the display screen when a problem arises. The display assembly includes the LCD, the front glass, and the display enclosure.

TOOLS:

- [Phillips #00 Screwdriver](#) (1)
 - [iFixit Opening Tool](#) (1)
-

Step 1 — Battery



- Slide both of the latches to the outside to release the battery.

Step 2



- Pull the battery out by lifting the battery cover away from the laptop.

Step 3 — Keyboard



- Flip the computer over and insert the plastic opening tool under the plastic strip at the top of the keyboard.
- Pry the top plastic strip from the top of the keyboard.
- Peel the strip completely away from the keyboard.

Step 4



- Using your Phillips #00, unscrew the two 4.80mm screws at the top of the keyboard.

Step 5



⚠ When removing the keyboard, be careful not to rip the ribbon cable connecting the keyboard to the computer, to avoid damaging it.

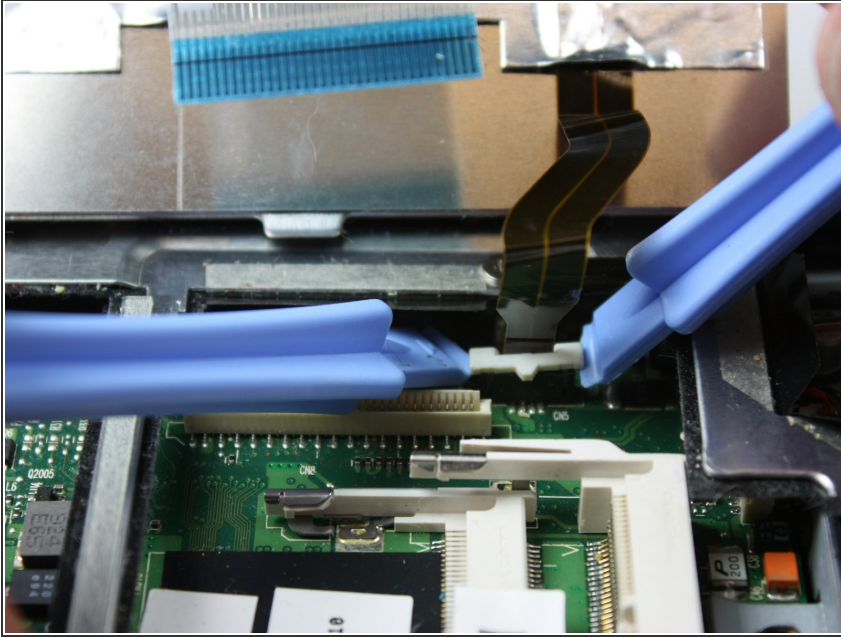
- Flip the keyboard up from the bottom in order to see the two ribbons connecting it to the motherboard.

Step 6



- Using the plastic opening tools, pop out the ribbon cable from the rest of the computer.

Step 7



- Using the plastic opening tools, pop out the second ribbon cable from the rest of the computer.

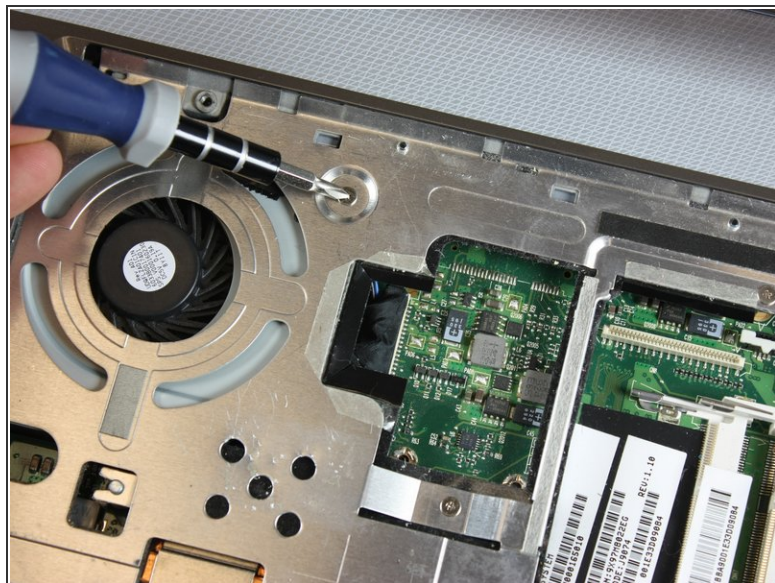
Step 8



- Completely remove the keyboard from the laptop by lifting up the part closest to the screen, and then gently pulling out the bottom half.

i Keep the keyboard safe by storing it on a flat, non-metallic surface until needed.

Step 9 — Front Panel



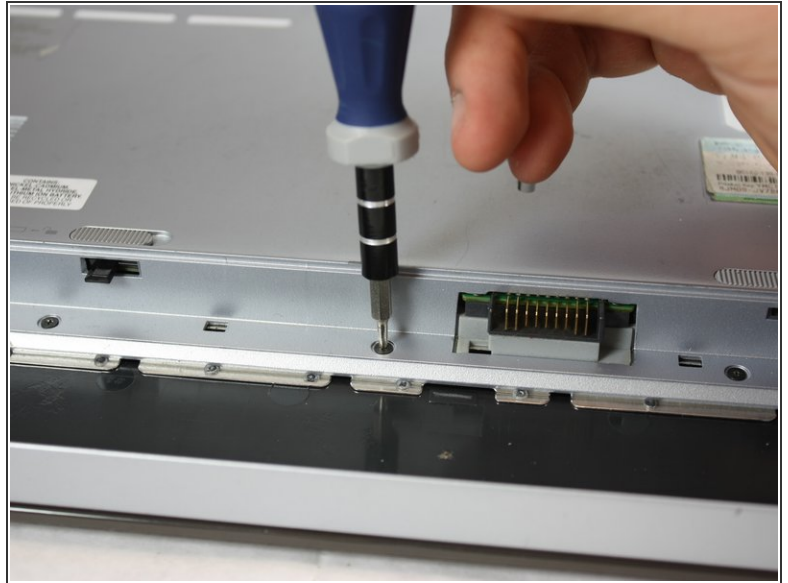
- Locate the four silver screws on the front panel.
- Using the Phillips #0, unscrew to remove all four 2.95mm silver screws.

Step 10



- Flip the laptop over and locate all seven screws on the bottom of the laptop.
- Unscrew all seven Philips#00 7.70mm screws.

Step 11



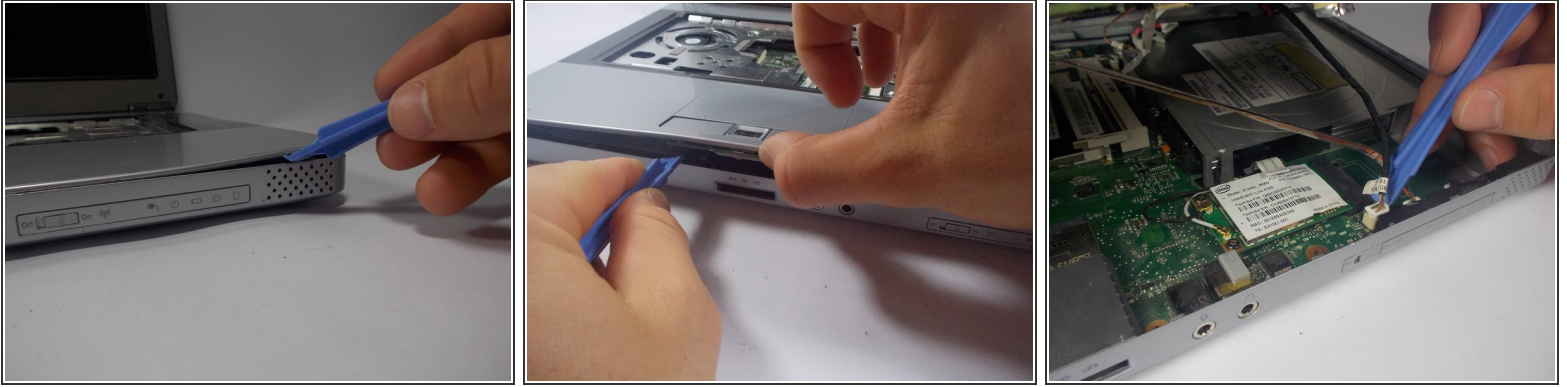
- Locate and unscrew the three silver Philips #00 2.85mm screws inside the battery compartment.
- Locate and unscrew the five black Philips #00 3.25mm screws inside the battery compartment.

Step 12



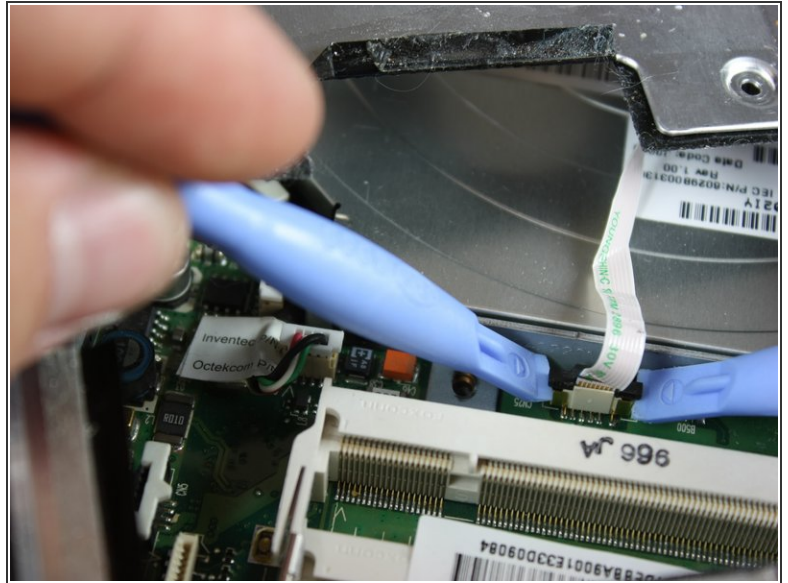
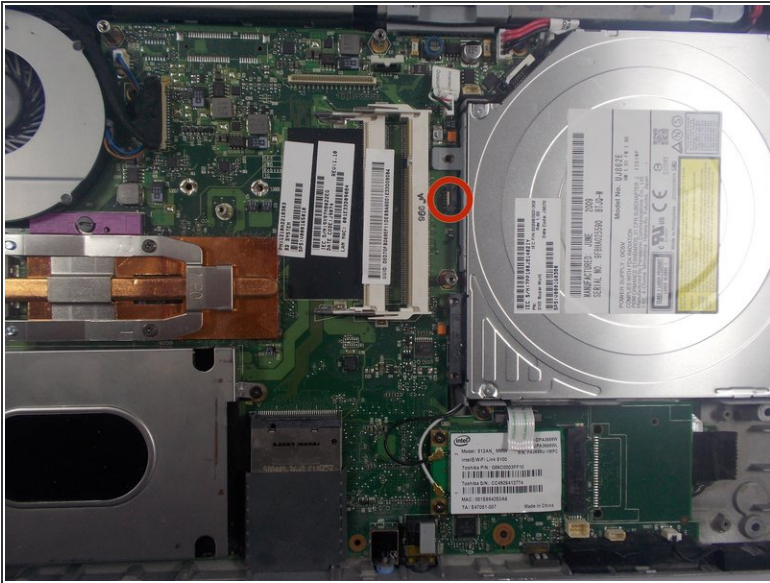
- Rotate the laptop so the back faces you.
- Locate the two black Philips #00 7.65 screws, one by each hinge, and remove.

Step 13



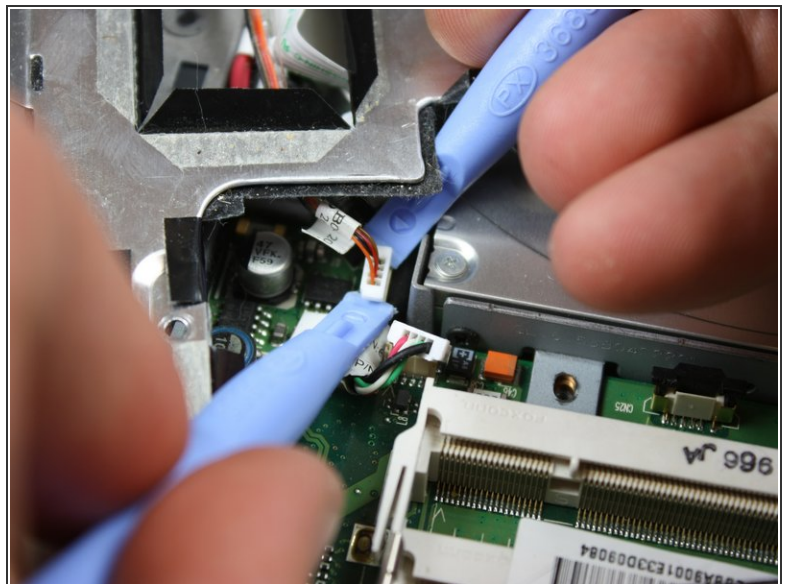
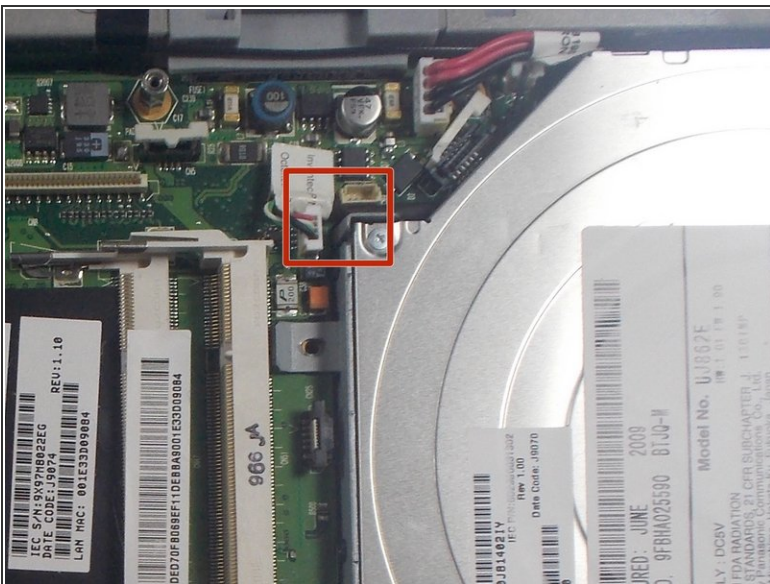
- Use the plastic opening tool to pry the top panel up from the base of the computer.
 - Slowly work your way around the computer with the plastic removing tool to make it easier to lift the top panel away from the base.
- ⚠ Carefully lift the top panel no more than six inches, as there are ribbon cables connecting the two pieces.**
- Disconnect ribbons, and slowly lift the top panel up, away from the base.

Step 14



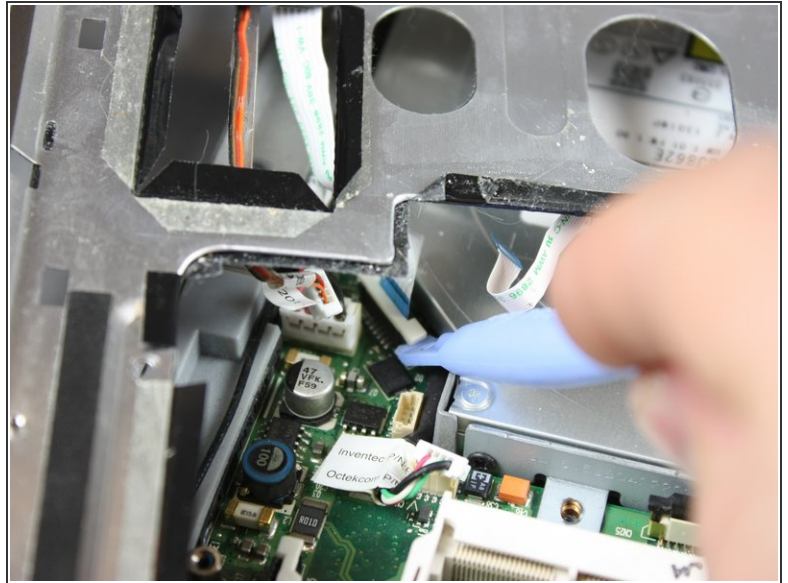
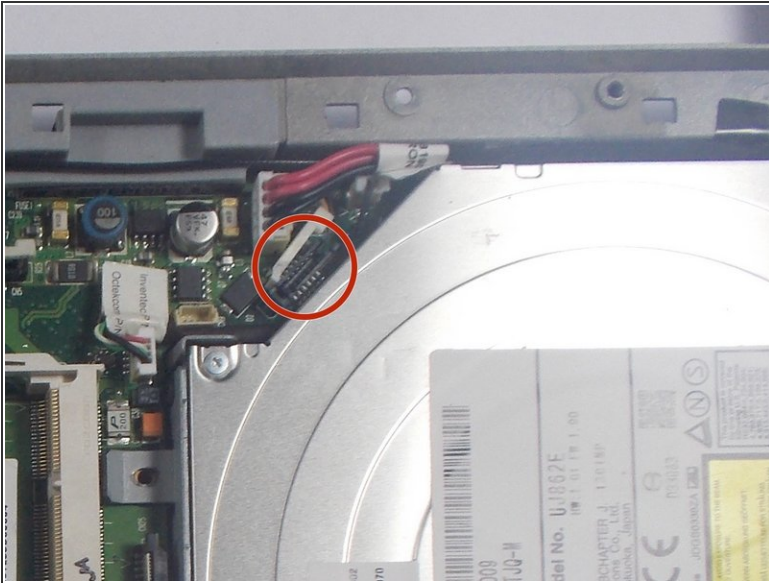
- Locate the ribbon cable from the motherboard.
- Using plastic removing tools, pop the ribbon base from the motherboard.

Step 15



- Locate the two plugs from the motherboard.
- Using plastic opening tools, remove each plug from the motherboard.

Step 16



- Locate the ribbon cable partially hidden under the front panel.
- Using plastic opening tools, pop out the ribbon cable from the motherboard.

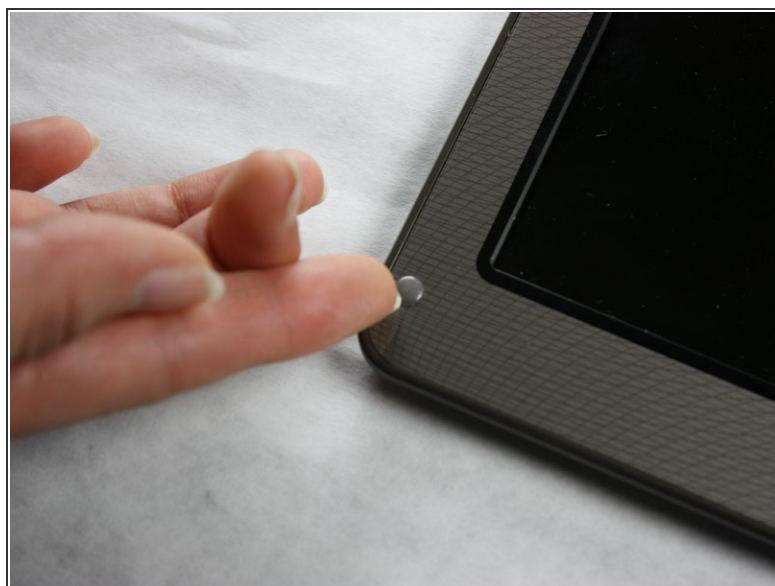
Step 17



⚠ Make sure that all wires have been disconnected before proceeding to avoid damaging components.

- Slowly lift the top panel away from the base of the computer.
- Place the top panel away from the computer and keep in a flat non-metallic surface until needed.

Step 18 — Display



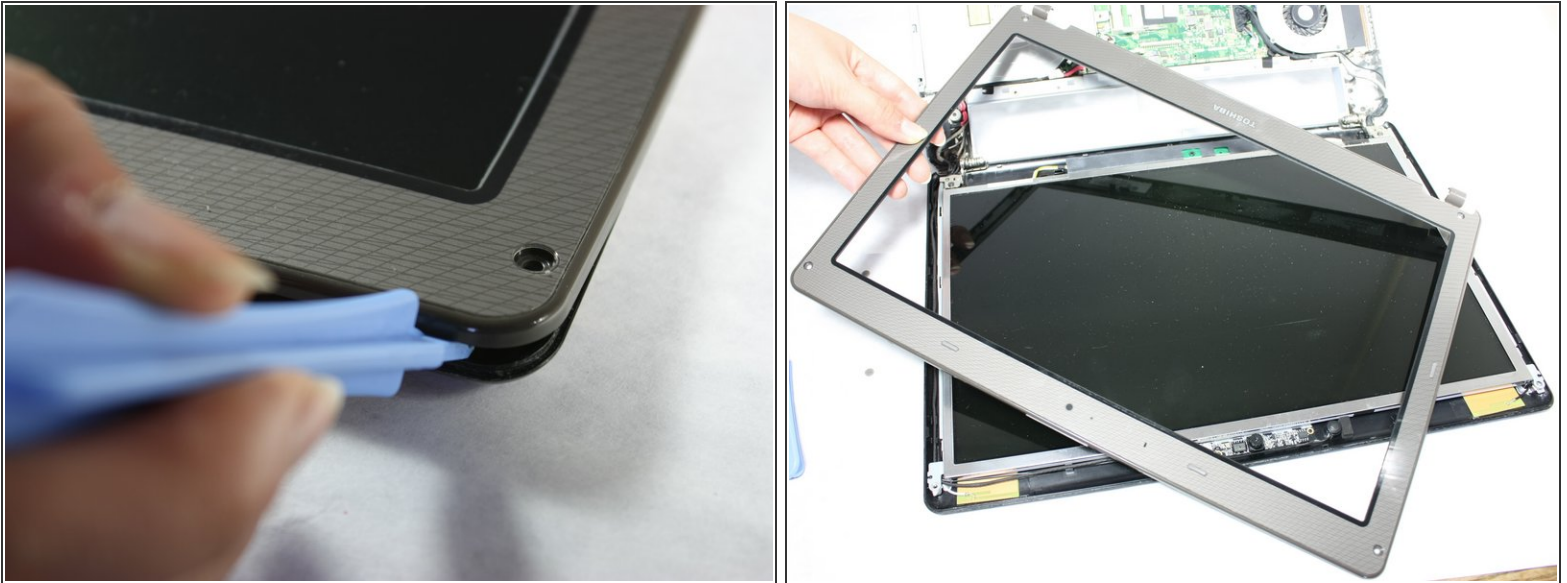
- Rotate the computer so the screen is facing you and locate the four plastic screw covers; one at each corner of the screen
- Using your fingernail, remove each cover in order to expose the screw.

Step 19



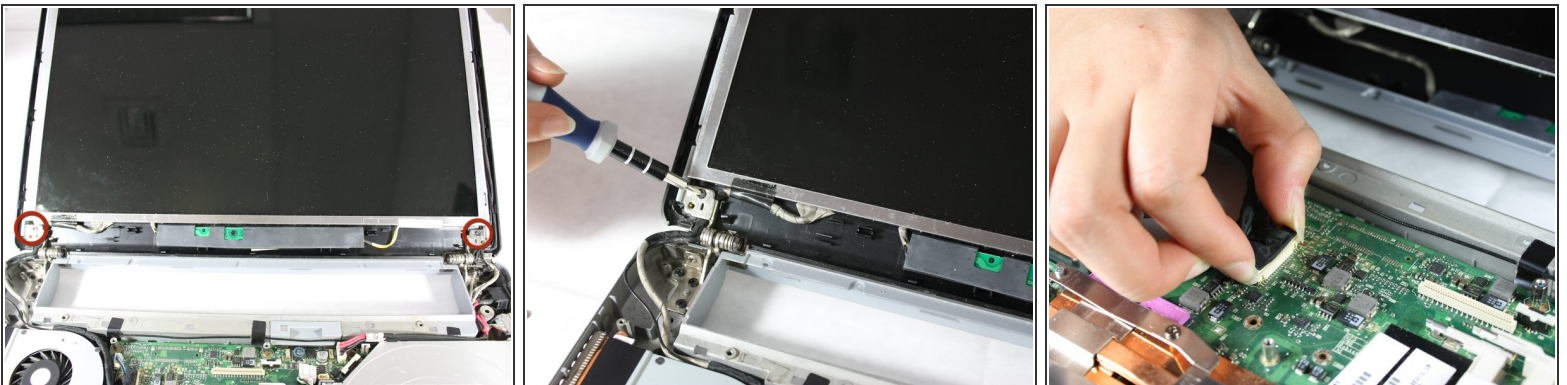
- Remove the four Philips #00 4.85mm screws located at each corner of the screen.

Step 20



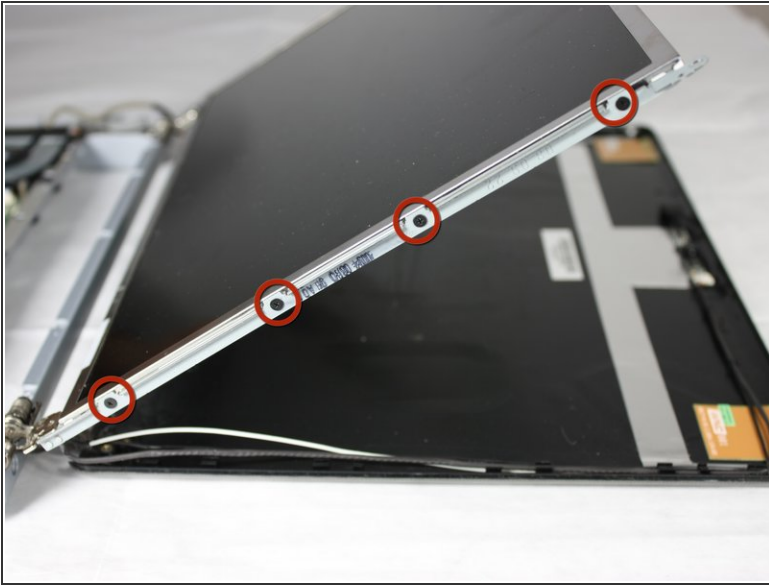
- Insert the plastic opening tool in between the screen and the case to peel the plastic case away from the screen.
- Lift the plastic case away from the rest of the screen.

Step 21



- Locate and remove the two Philips #00 5.65 mm screws in the bottom right and bottom left corners of the screen.
- ⓘ The screw in the bottom left corner is attached to a black and white cord in the back casing.
- To remove the cord from the motherboard, grip the sides of the cord and pull up from the motherboard.

Step 22



- Locate and remove the eight Philips #00 5.65 mm screws, four on either side of the screen.
- Lift the screen away from the rest of the laptop.

To reassemble your device, follow these instructions in reverse order.