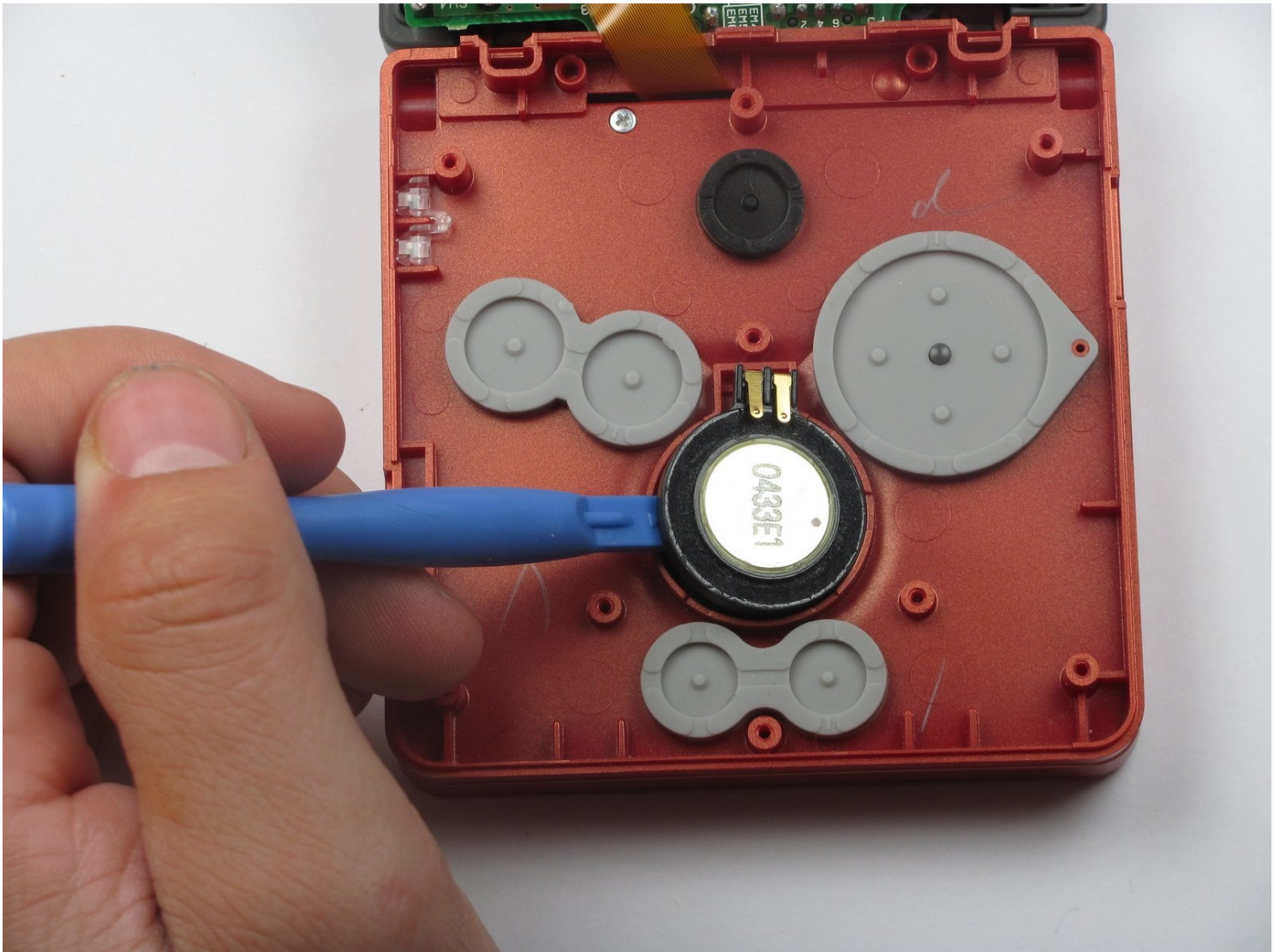




# Nintendo Game Boy Advance SP Speaker Replacement

The speaker is located in the center of the...

Written By: DJ Pantone



# INTRODUCTION

The speaker is located in the center of the Game Boy Advance SP's button panel. It is not wired to the motherboard which allows for an easy fix with no soldering.

---

## TOOLS:

Phillips #00 Screwdriver (1)  
iFixit Opening Tool (1)  
Tri-point Y00 Screwdriver (1)

## PARTS:

Game Boy Advance SP Speaker (1)

---

## Step 1 — Battery



- Use a standard Phillips #00 screwdriver to loosen the 4 mm screw that keeps the battery cover attached to the device.

## Step 2



- Lift the battery cover up and remove it from the device.
- ① The screw will remain attached to the battery cover because of Nintendo's design.

## Step 3



- Use your fingers or a plastic opening tool to remove the battery from the device.
- ⚠ **Caution:** Please exercise caution when handling the battery. If it appears to be swelling or damaged at all it is considered a fire hazard.

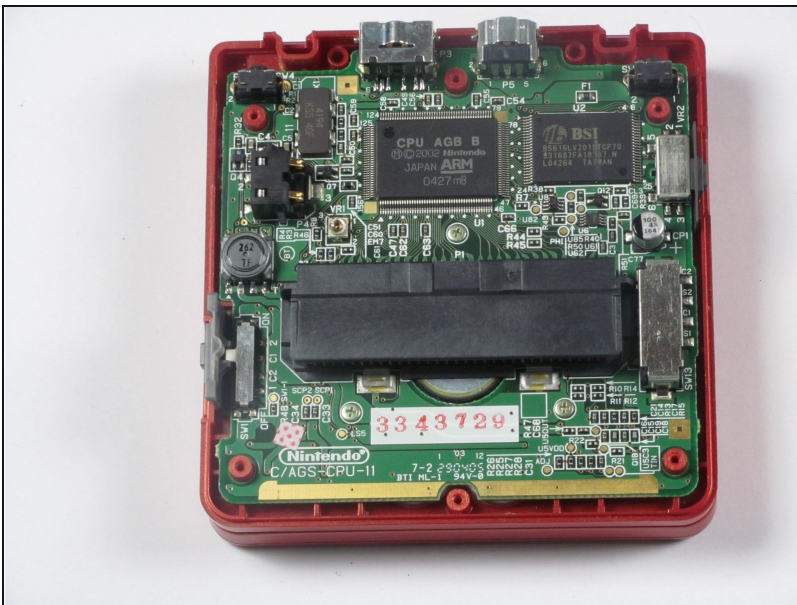


## Step 4 — Back Cover



- Remove four 6.5 mm screws from the corners of the back cover using a tri-point Y00 screwdriver.
- Remove two 4.6mm screws from the top-center and bottom-center of the device using a tri-point Y00 screwdriver.

## Step 5

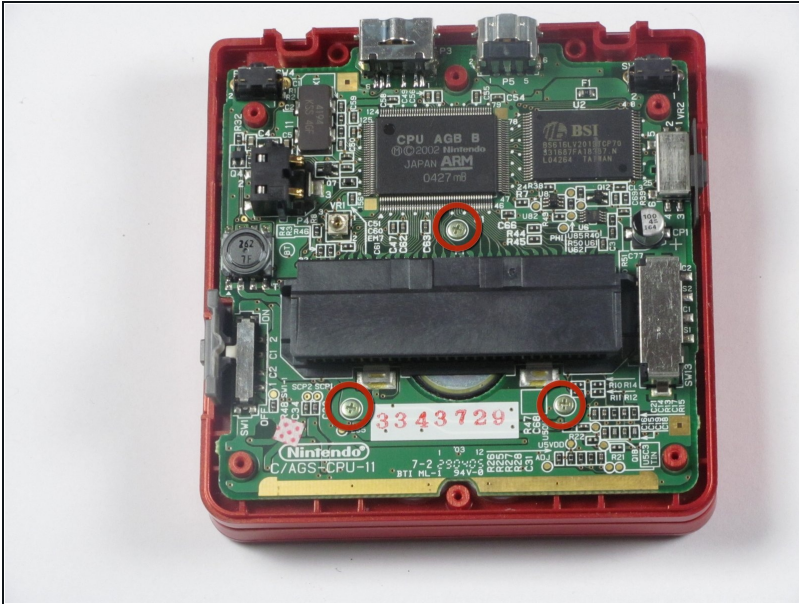


- Lift the back cover off of the device.

⚠ Potential for device damage: These inner components are vulnerable to static electricity. Exercise caution when handling these next steps to prevent damaging the device.

- ☑ Look out for the power switch that can fall out when taking the back cover off.

## Step 6 — Motherboard



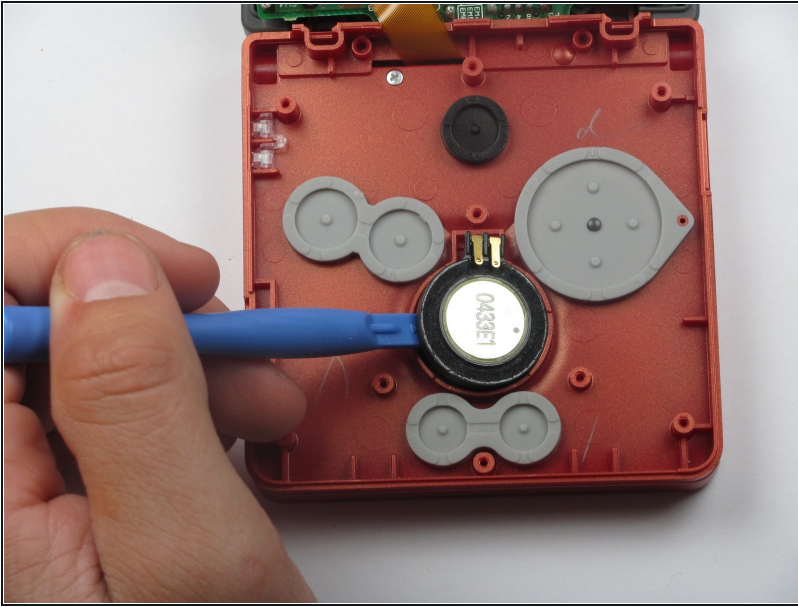
- Using a Phillips #00 screwdriver, remove the three Phillips #00 4 mm long screws that hold the motherboard to the button panel.

## Step 7



- ⚠ Be careful not to tear the ribbon cable that's connected to the screen. If you tear it, games will not appear on the device's screen!
- Flip the motherboard up and rest it on the other half of the device, so that the back of the buttons are visible as seen in the picture.

## Step 8 — Speaker



- Lift the speaker out of its slot in the button panel, using a plastic opening tool or [tweezers](#).
- ① Leave the foam circle inside the speaker's slot in the button panel. It keeps the speaker from moving and improves sound quality.

---

To reassemble your device, follow these instructions in reverse order.