



# Sony Mavica MVC-CD1000 lens Replacement

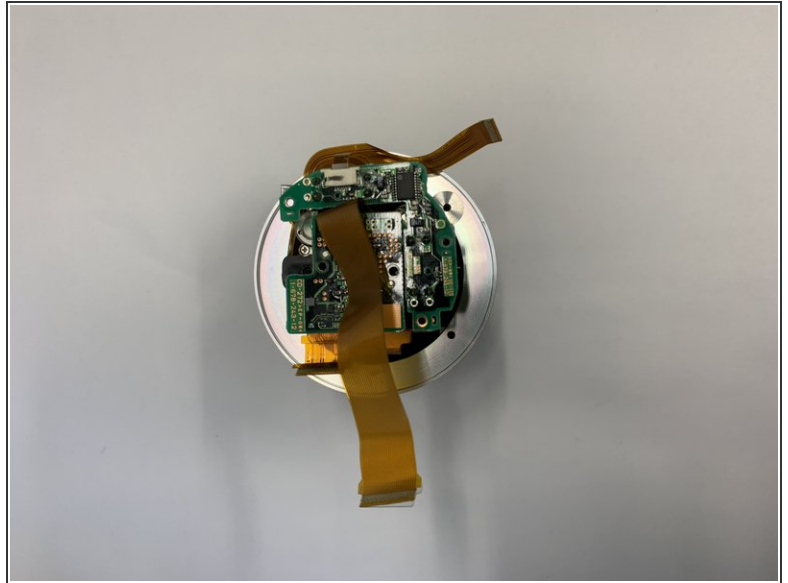
Written By: YuFan Ma



# INTRODUCTION

This guide will show you how to replace the lens on your device

## Step 1 — lens



- Remove the shell of base from the shell of lens

## Step 2



- The outer casing of the lens consists of two outer casings that are secured by an end cap that connects them. In this part we take this end cap

## Step 3



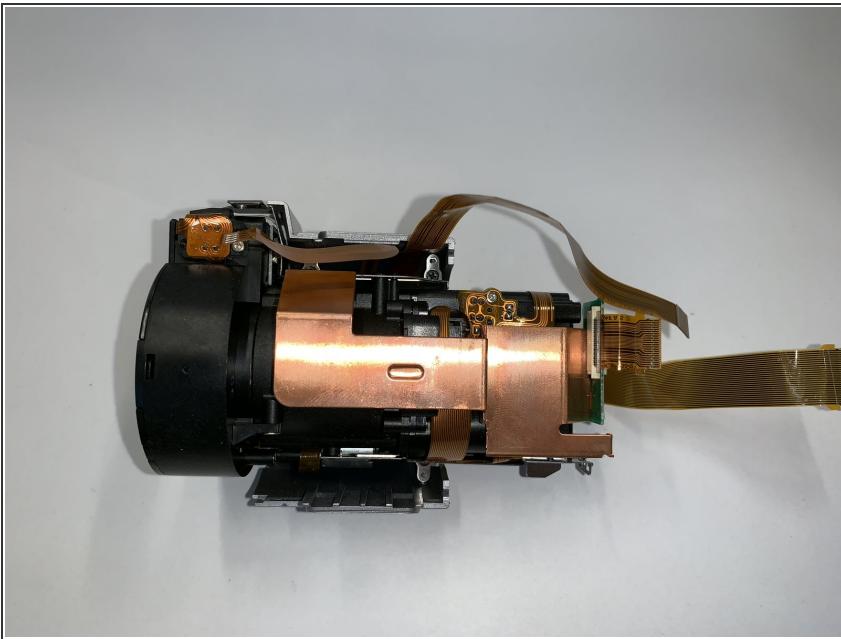
- There is also a front end cover at the front end of the lens. In this step we take it away.

## Step 4



- Place the lens section horizontally on the workbench and pry open the top cover of the lens with some effort

## Step 5



- After removing the shell of lens we can replace the inside part.

When reassembling your device, follow the instructions in reverse order.