



Asus Q503UA-BSI5T17 Hard Drive Removal

The ASUS Q503UA-BSI5T17 is a 2 in 1...

Written By: Orlando Garcia



INTRODUCTION

The ASUS Q503UA-BSI5T17 is a 2 in 1 touch-screen portable PC with a 15.6-inch screen. This guide will show a step-by-step process on how to remove the hard drive. Removal of the hard drive is necessary if the hard drive begins to fail or dies.

Signs of a failing hard drive are a blue screen error when starting the PC, the PC not starting at all, a “file not found” error when turning on the device , an increase in the amount of corrupted files on the PC, and a loud ticking or scratching sound coming from the device.

Removal of the hard drive may also be necessary to reach other components of the PC or to upgrade for more storage space.

Steps 4 through 6 require handling of the battery and disconnecting it. Make sure the device is completely shut off and unplugged from any chargers or wall ports before working on the device. Be extremely cautious when working with the battery as breaking it can ruin your device.



TOOLS:

- [iFixit Opening Tool](#) (1)
- [iFixit Opening Picks \(Set of 6\)](#) (1)
- [Phillips #0 Screwdriver](#) (1)
- [Magnetic Project Mat](#) (1)



PARTS:

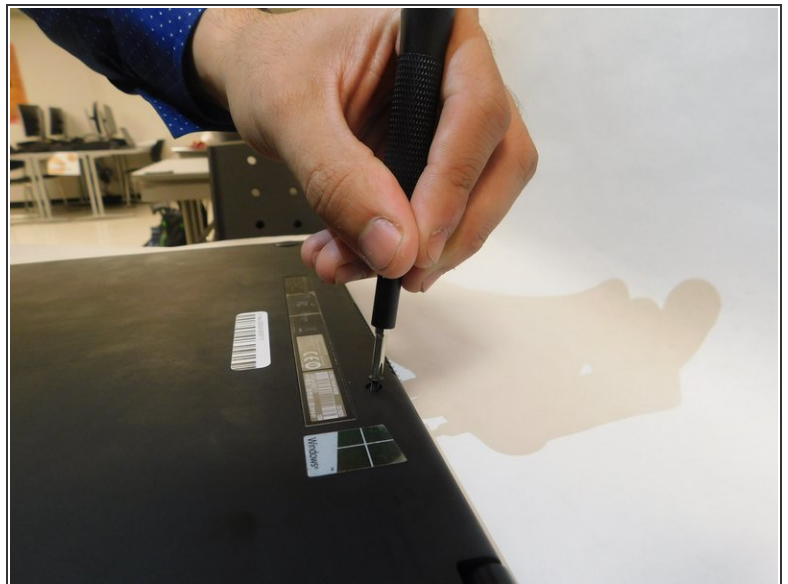
- [Crucial MX500 1 TB SSD](#) (1)
- [Crucial MX500 250 GB SSD](#) (1)
- [Crucial MX500 500 GB SSD](#) (1)
- [Crucial MX500 2 TB SSD](#) (1)

Step 1 — Battery Replacement



- Flip the computer upside down. In order to ensure that the correct side is up, you should be able to read the sticker that indicates the serial number on the bottom.

Step 2



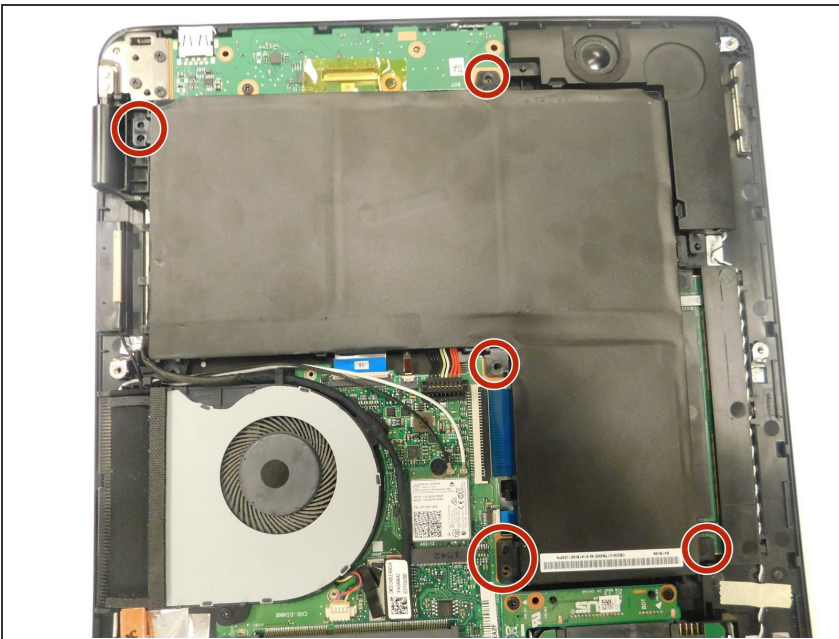
- Remove the ten circled screws along the perimeter of the laptop with a Phillips #0 screwdriver.

Step 3



- Starting from the top right corner, use a plastic prying tool to separate the cover from the laptop. Use light pressure to prevent the plastic from breaking.
- ⓘ You should feel the frame coming loose. If necessary, use spacers to keep the frame from locking back into place.
- Repeat the above step around the laptop until you are able to lift the cover.

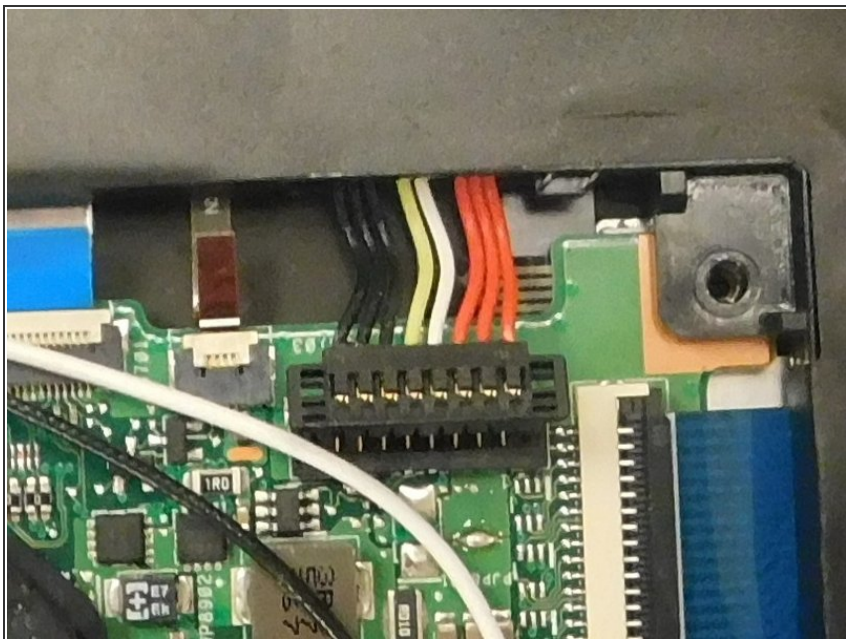
Step 4 — Battery



- Remove the five screws holding the battery in place using a Phillips #0 screwdriver.

⚠ Screw locations are approximate. If you find screws to be located elsewhere, please [update this step](#) with their correct locations.

Step 5



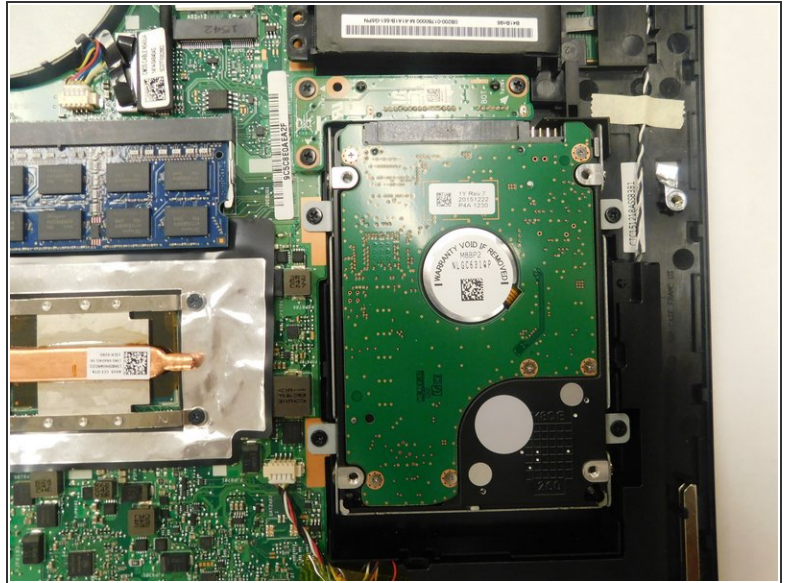
- Disconnect the battery connection.

Step 6



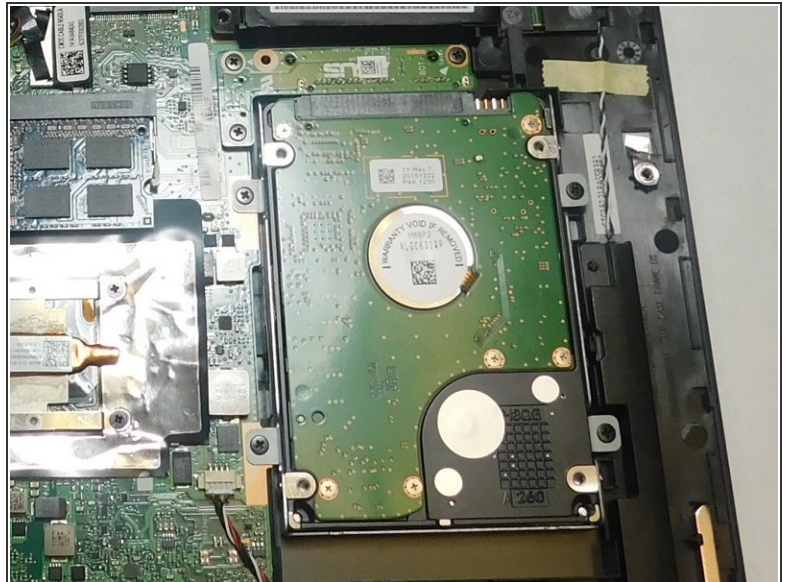
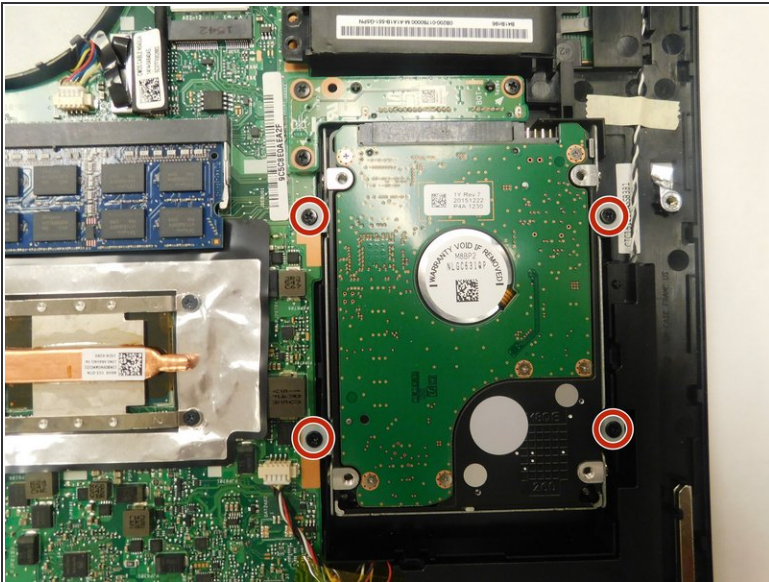
- Grab and lift the battery from the top right-hand side.
- ① If all screws are removed, it should come out with no struggle at all.

Step 7 — Hard Drive



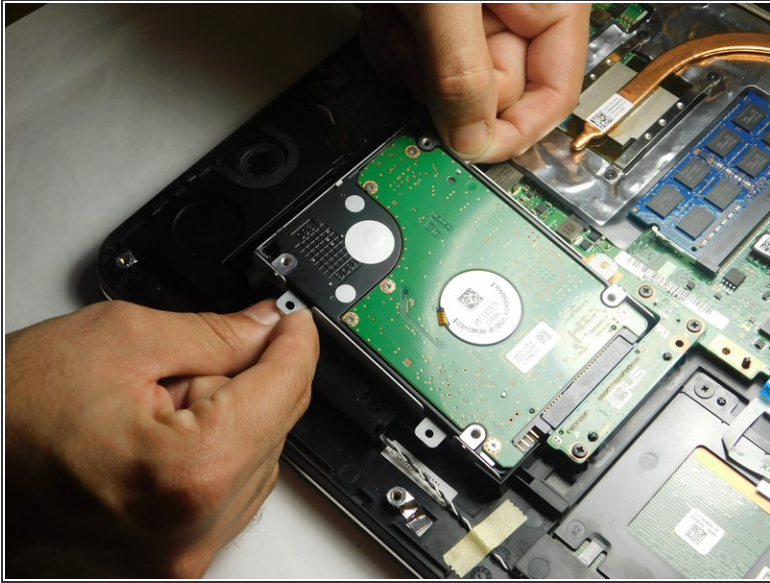
- Once you opened the laptop, the hard drive is located on the bottom right from where the battery is.

Step 8



- Use a Phillips #0 screwdriver to unscrew the four screws surrounding the hard drive.

Step 9



- Disconnect the cable that is connected to the hard drive by lifting the edge slightly and sliding it horizontally away from the connector.
- Remove the hard drive.
- ⓘ You may need to further remove the metal mounting brackets from your old hard drive then install them on your new hard drive before reinstallation.

To reassemble your device, follow these instructions in reverse order.