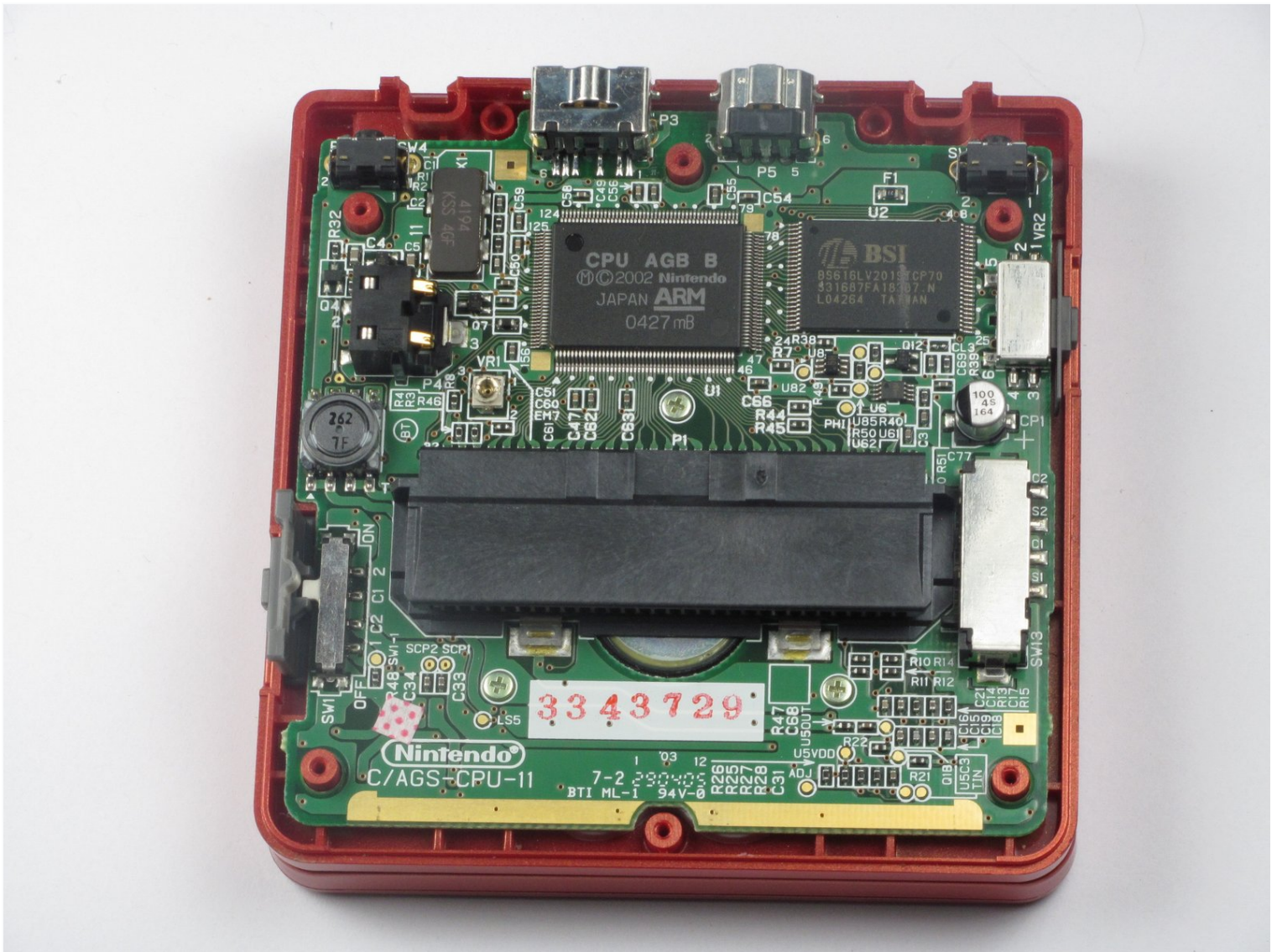


Nintendo Game Boy Advance SP Back Cover Replacement

The back cover is the only layer between the...

Written By: Rocco Lattanzio



INTRODUCTION

The back cover is the only layer between the motherboard and the many things things that can ruin the motherboard. Expect the six screws that hold the cover to the device to be fastened tightly.

TOOLS:

Phillips #00 Screwdriver (1)

Tri-point Y00 Screwdriver (1)

Step 1 — Battery



- Use a standard Phillips #00 screwdriver to loosen the 4 mm screw that keeps the battery cover attached to the device.

Step 2



- Lift the battery cover up and remove it from the device.

i The screw will remain attached to the battery cover because of Nintendo's design.

Step 3



- Use your fingers or a plastic opening tool to remove the battery from the device.

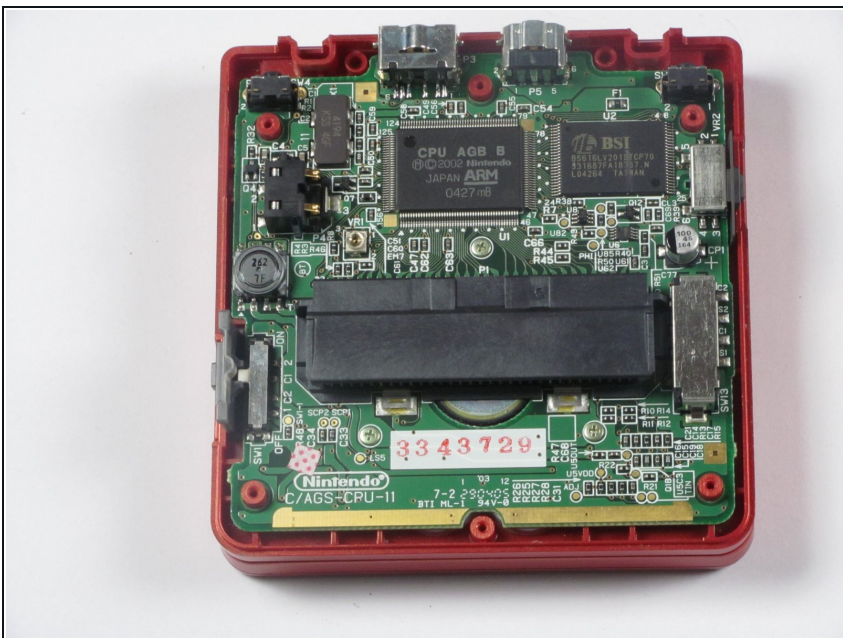
⚠ Caution: Please exercise caution when handling the battery. If it appears to be swelling or damaged at all it is considered a fire hazard.

Step 4 — Back Cover



- Remove four 6.5 mm screws from the corners of the back cover using a tri-point Y00 screwdriver.
- Remove two 4.6mm screws from the top-center and bottom-center of the device using a tri-point Y00 screwdriver.

Step 5



- Lift the back cover off of the device.

⚠ Potential for device damage: These inner components are vulnerable to static electricity. Exercise caution when handling these next steps to prevent damaging the device.

- ☑ Look out for the power switch that can fall out when taking the back cover off.

To reassemble your device, follow these instructions in reverse order.