



Samsung Odyssey NP800G5M Battery Replacement

This guide will help you to remove a faulty battery and install a new battery in your Samsung Odyssey NP800G5M.

Written By: Sean Surrency



INTRODUCTION

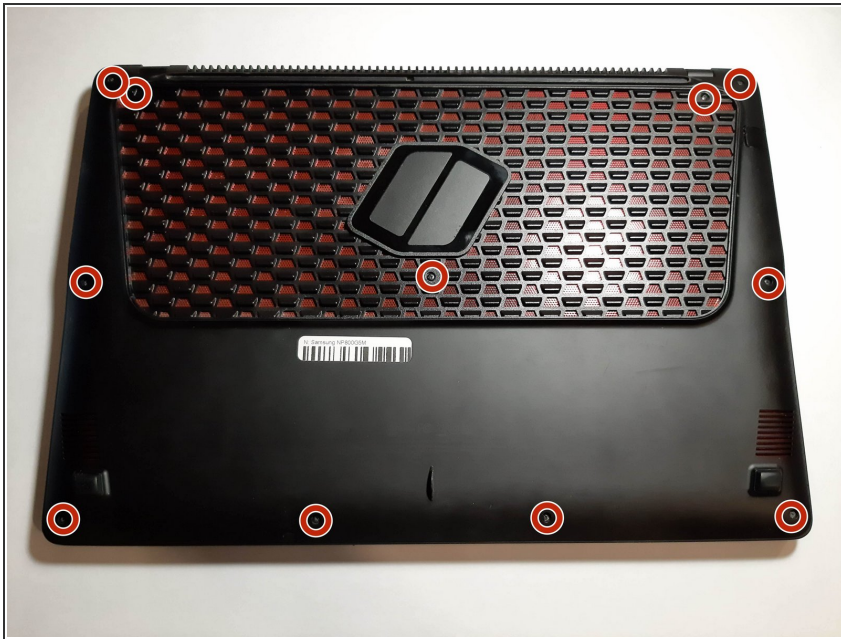
If your Samsung Odyssey NP800G5M is not powering on or charging, it is most likely due to a faulty/dead battery. The battery can be replaced in a few simple steps. However, take the necessary precautions.



TOOLS:

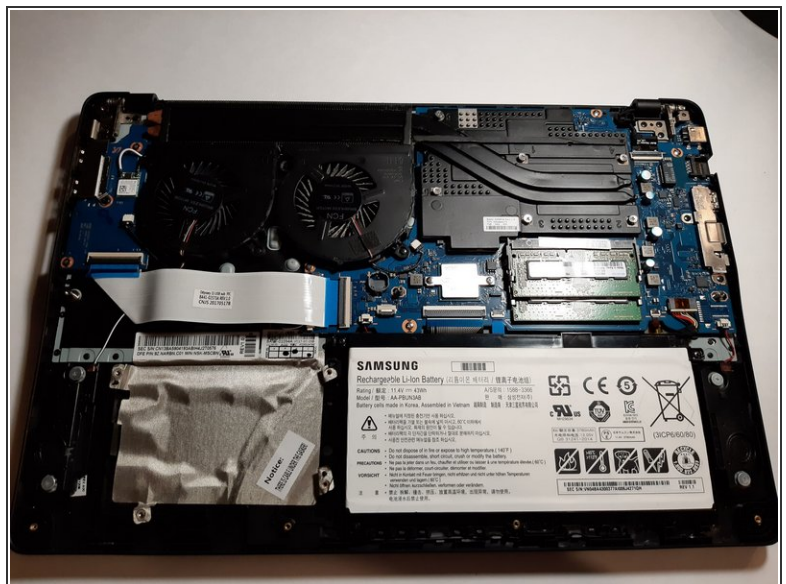
- [Spudger](#) (1)
 - [Phillips #0 Screwdriver](#) (1)
-

Step 1 — Battery



- Remove the eleven 6.6 mm screws on the back of the computer using the Phillips #0 screwdriver.

Step 2




- Using the opening tool, gently pry apart the back corners until the plastic separates from the body of the laptop.
- Work your way around the body of the laptop until the back cover is completely separated.
- Remove the back casing.

This document was generated on 2020-11-28 07:42:29 AM (MST).

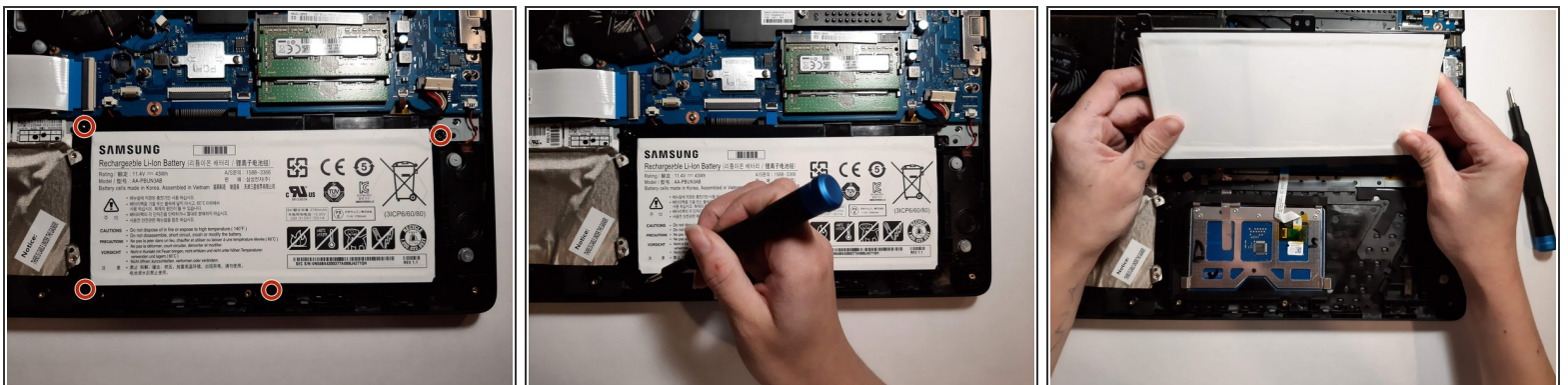
Step 3



- Disconnect the battery connector cable.

 Working on the device without removing the battery connector cable can damage major components of the device.

Step 4



- Remove the four 6.6 mm screws using the Phillips #0 screwdriver.
- Remove the battery from the device.

To reassemble your device, follow these instructions in reverse order.

This document was generated on 2020-11-28 07:42:29 AM (MST).