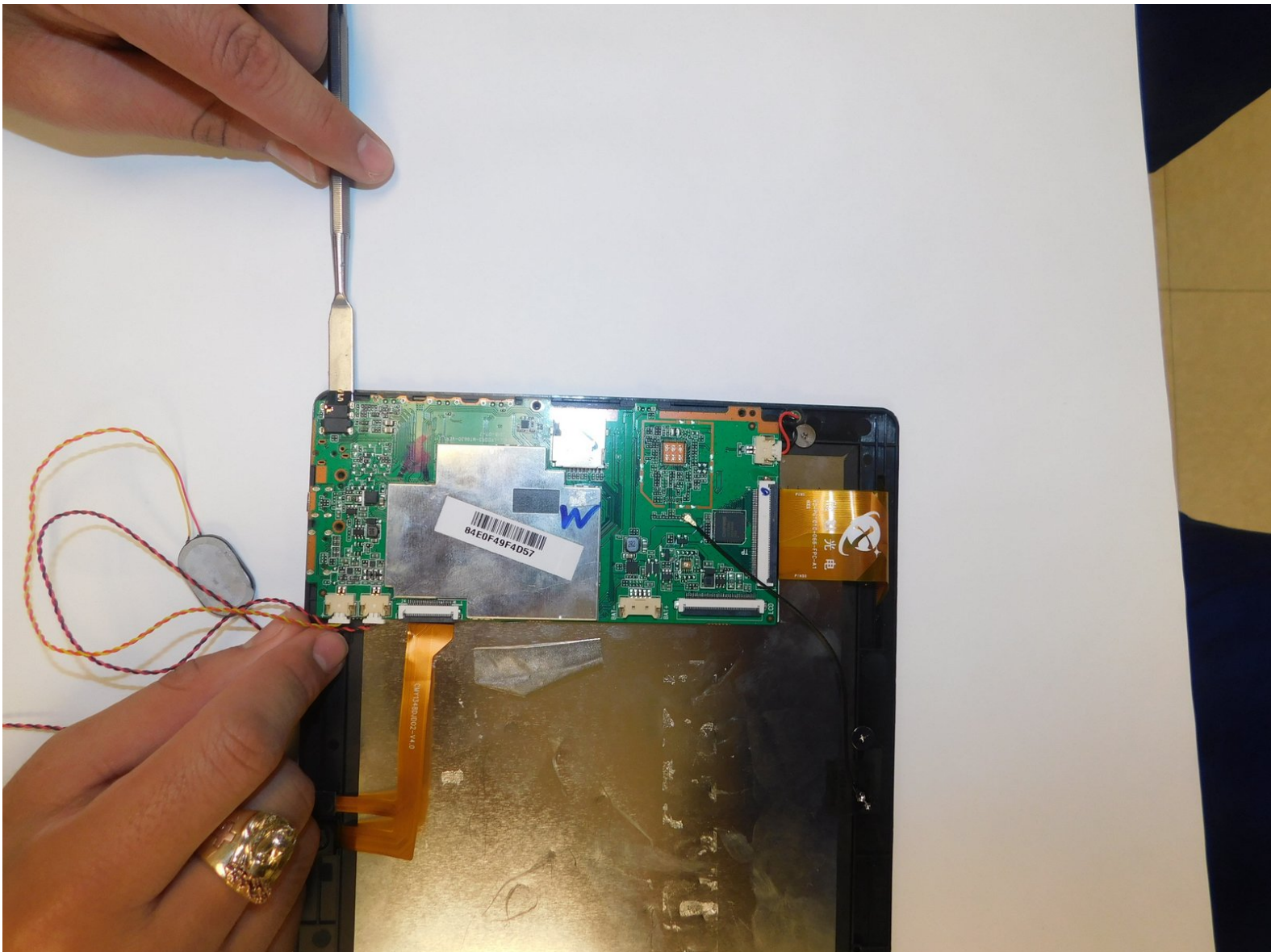




Digiland 10.1" DL1016 Screen Replacement

Screen Replacement for Digiland "10.1" DL1016

Written By: Virginia Tapia



INTRODUCTION

use this guide if your display is faulty, will not turn on, or either damaged in any way than this guide will help you replace the screen properly and carefully for your Digiland "10.1" DL1016 tablet



TOOLS:

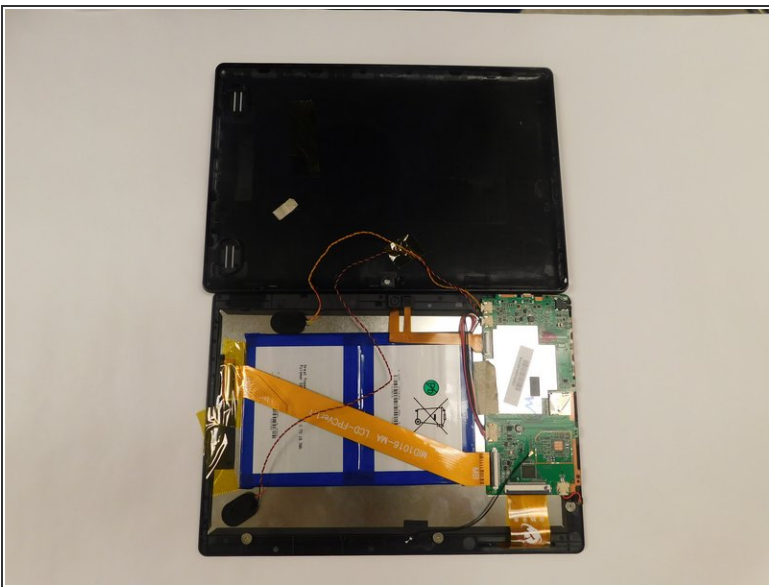
- [Spudger](#) (1)
- [Phillips #000 Screwdriver](#) (1)
- [iFixit Opening Tools](#) (1)
- [iFixit Opening Picks set of 6](#) (1)
- [Phillips Size 0 Screwdriver](#) (1)
- [Metal Spudger](#) (1)

Step 1 — Digiland 10.1" DL1016 Remove Backing



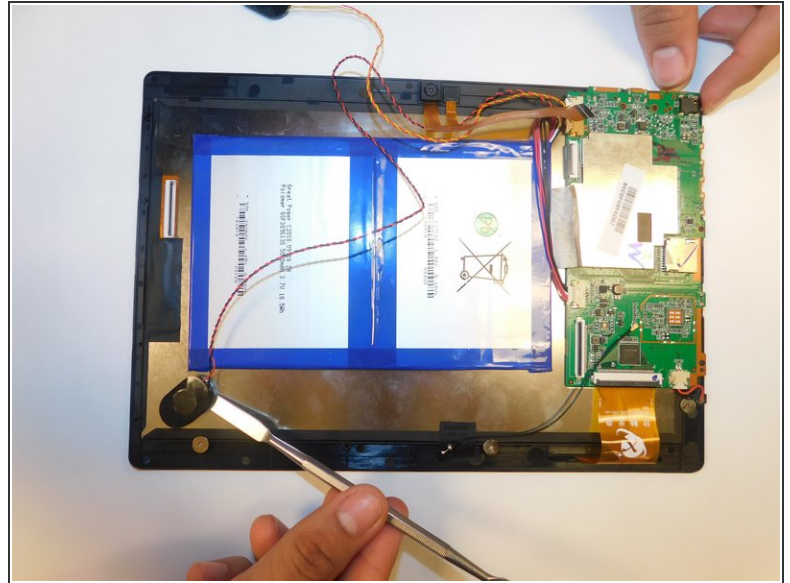
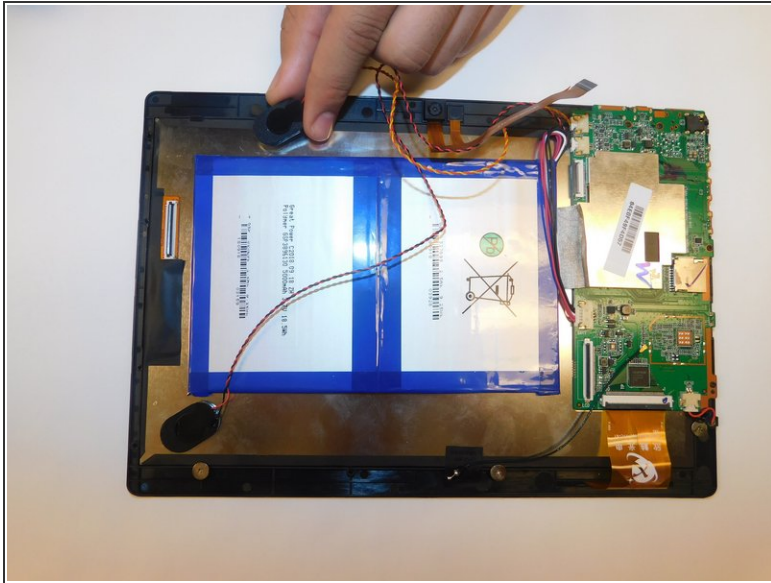
- Use an opening pick and an opening tool to pry the backing off the back of the tablet.
- ⓘ You may need some force when doing this and if needed use a metal spudger.

Step 2



- Gently lift the backing off.

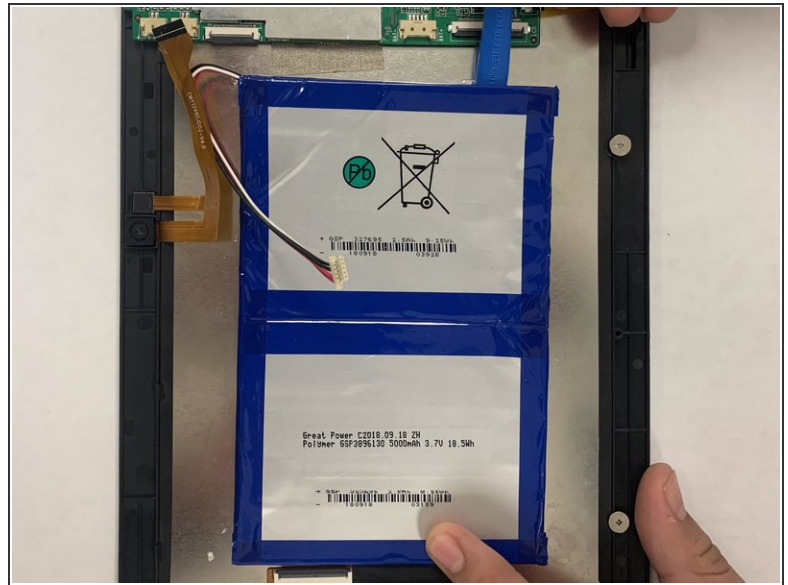
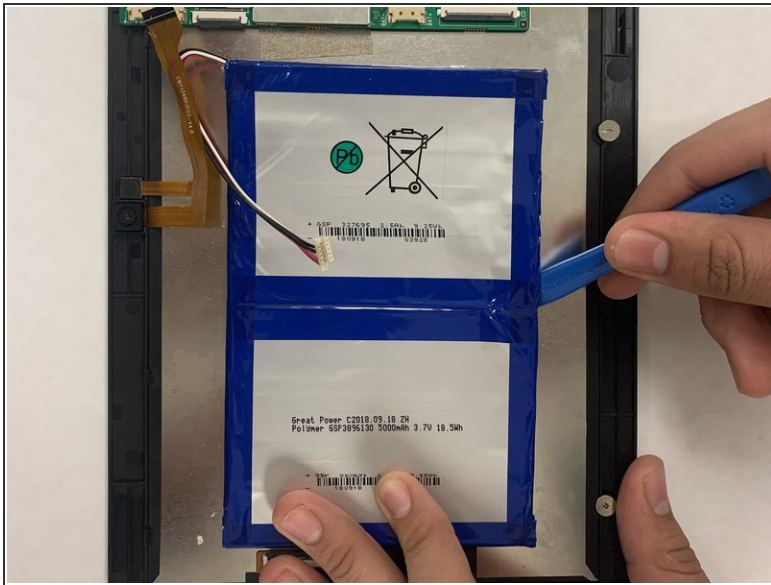
Step 3 — Digiland 10.1" DL1016 Disconnect Wires going off the Motherboard



- Gently pull the wiring back.

i You may need to use a metal spudger to lift the wire connector off the back of the screen.

Step 4 — Digiland 10.1" DL1016 Remove Battery



⚠ Use an ESD safe pryer to lift the battery up.

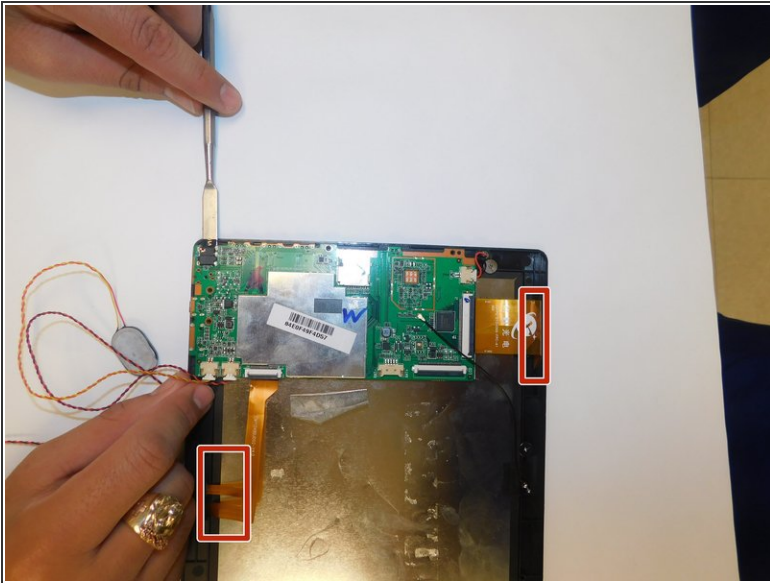
- There is glue that holds the battery down, so carefully pry it open. You may need to use some force.

Step 5 — Power Button



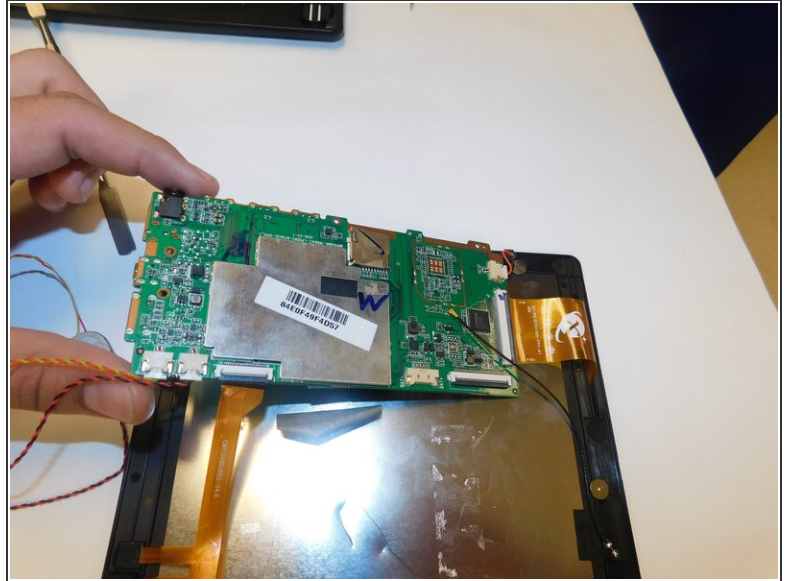
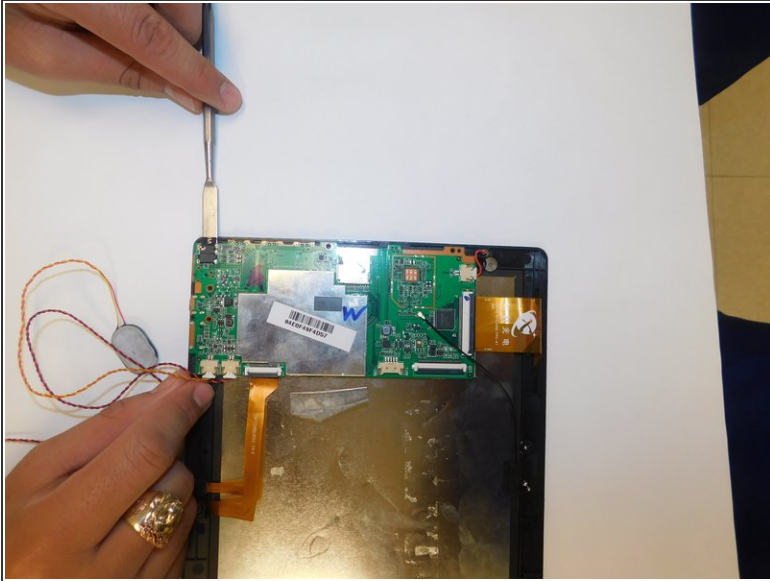
- Disconnect the black cable off the motherboard.
- Remove the four 1.5mm Phillips #000 screws from the motherboard.

Step 6



- Make sure the ribbon cables are free or unconnected so the motherboard is able to be moved.
- Use a metal spudger to slide underneath the motherboard and push it up so it's unstuck from the tablet.
- Lift up the motherboard and place it somewhere that is clean and kept safe.

Step 7 — Screen



- Remove the tape from the backside of the tablet along with the wiring.
- Make space so you can pry the motherboard away from the digitizer.

Step 8



- Once the motherboard is pulled away, the screen should be free of all other components.
- Check around the edges so that no tape is stuck to the edges or wiring and just push off digitizer and replace screen if needed.

To reassemble your device, follow these instructions in reverse order.