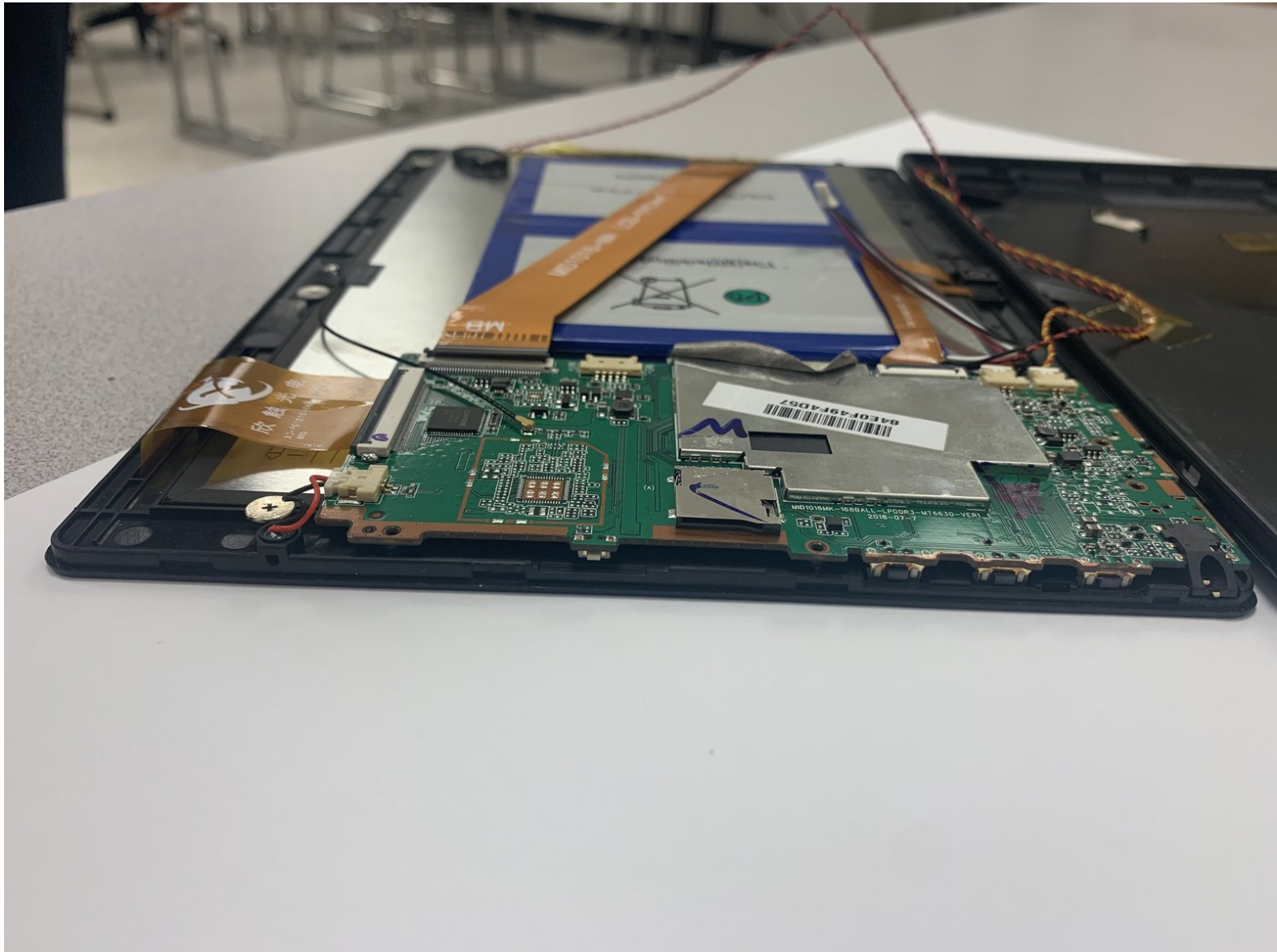




Digiland 10.1" DL1016 Power Button Replacement

How to replace your DigiLand DI801W power button.

Written By: CRISTIAN RAMIREZ



INTRODUCTION

Use this guide to replace the power button Digiland 10.1" DL1016 tablet.

A functional power button will power the device on or off when pressed once. Over time a power button may become stuck or unresponsive if debris gets under the power button assembly or has faulty wiring.

For the replacement of the power button, you will need to know how to solder/desolder connections. Please review this guide to follow the proper soldering technique to complete this replacement. [How To Solder and Desolder Connections](#)

Step 6 requires you to remove the motherboard from the device, next you will need to desolder the power button and solder a new one in place.

Before beginning the replacement make sure the power off the device and disconnect any external power.



TOOLS:

- [iFixit Opening Tools](#) (1)
 - [iFixit Opening Picks set of 6](#) (1)
 - [Spudger](#) (1)
 - [Metal Spudger](#) (1)
 - [Phillips #000 Screwdriver](#) (1)
-

Step 1 — Digiland 10.1" DL1016 Remove Backing



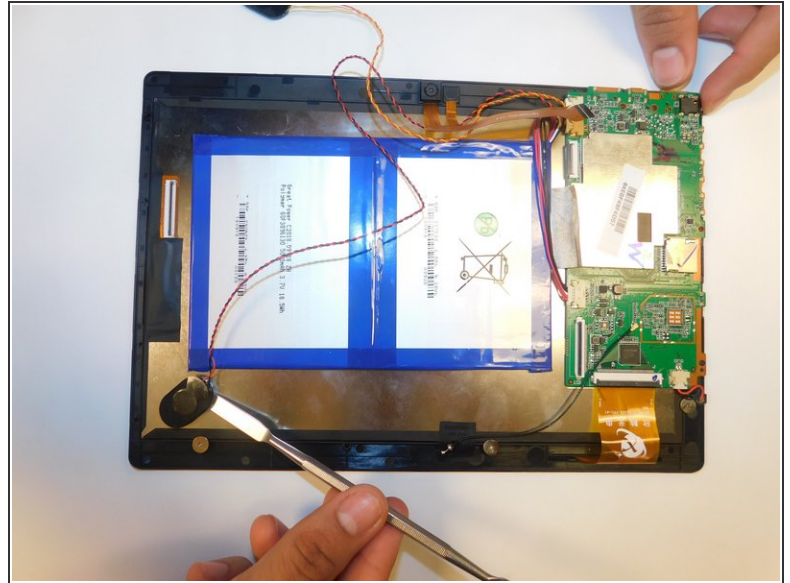
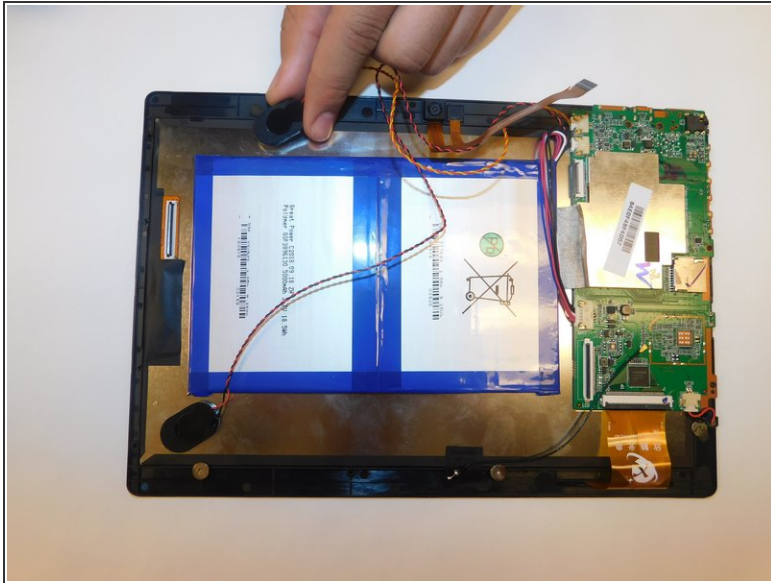
- Use an opening pick and an opening tool to pry the backing off the back of the tablet.
- ⓘ You may need some force when doing this and if needed use a metal spudger.

Step 2



- Gently lift the backing off.

Step 3 — Digiland 10.1" DL1016 Disconnect Wires going off the Motherboard



- Gently pull the wiring back.

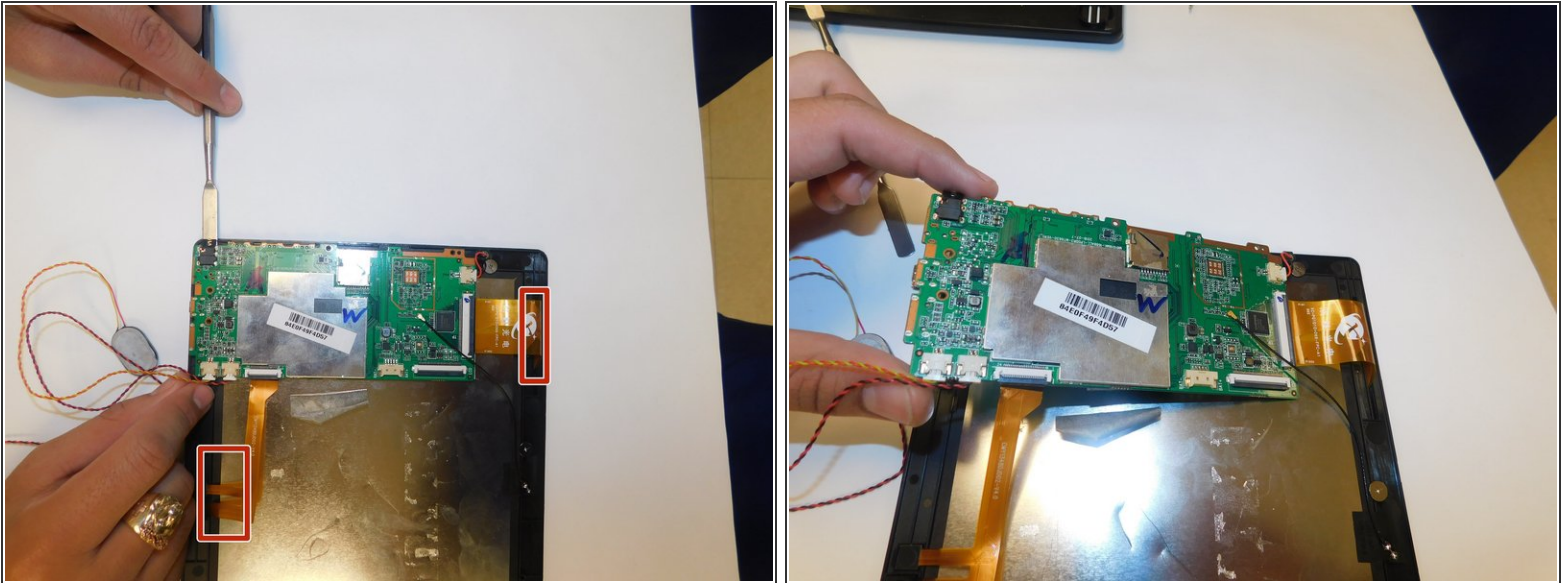
i You may need to use a metal spudger to lift the wire connector off the back of the screen.

Step 4 — Power Button



- Disconnect the black cable off the motherboard.
- Remove the four 1.5mm Phillips #000 screws from the motherboard.

Step 5



- Make sure the ribbon cables are free or unconnected so the motherboard is able to be moved.
- Use a metal spudger to slide underneath the motherboard and push it up so it's unstuck from the tablet.
- Lift up the motherboard and place it somewhere that is clean and kept safe.

To reassemble your device, follow these instructions in reverse order.