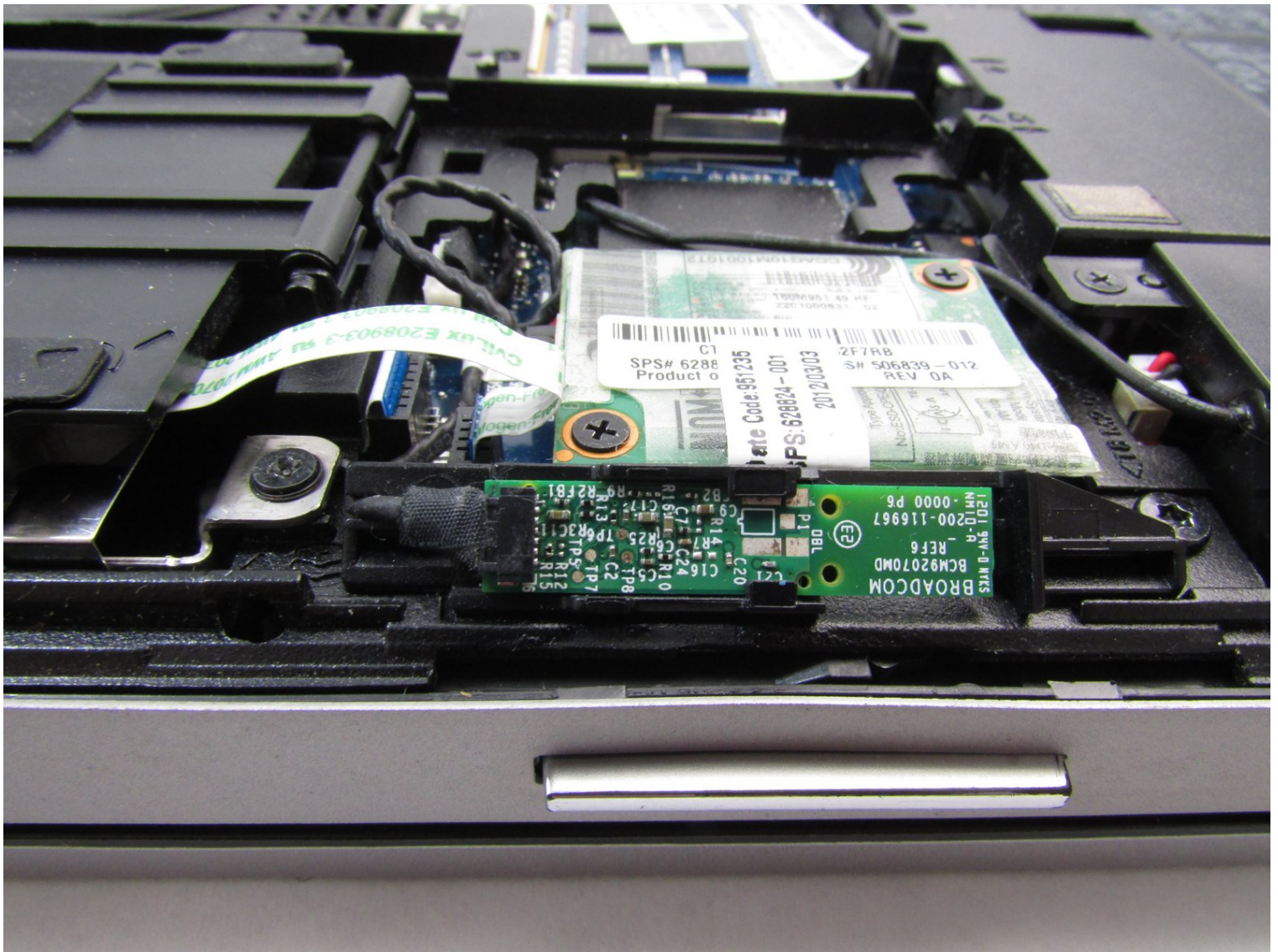




HP Elitebook 8460p Bluetooth Card Replacement

Use this guide to replace the Bluetooth card...

Written By: Garrett Anderson



INTRODUCTION

Use this guide to replace the Bluetooth card for the HP Elitebook 8460p if you are having problems with Bluetooth connectivity and have ruled out any problems with the computer operating system. Use this guide to also gain access to the wire connections to the Bluetooth chip to reconnect the wires.

Take care to ground yourself using an ESD strap to prevent electrostatic discharges from damaging the Bluetooth card further, or from damaging the motherboard.

Step 1 — Battery



- On the back of the computer, slide the left switch towards the outside of the laptop until you hear a click.

Step 2



- Slide the battery away from the switches until it can be lifted away from the laptop.
- Lift the battery away from the laptop.

Step 3 — Back Panel



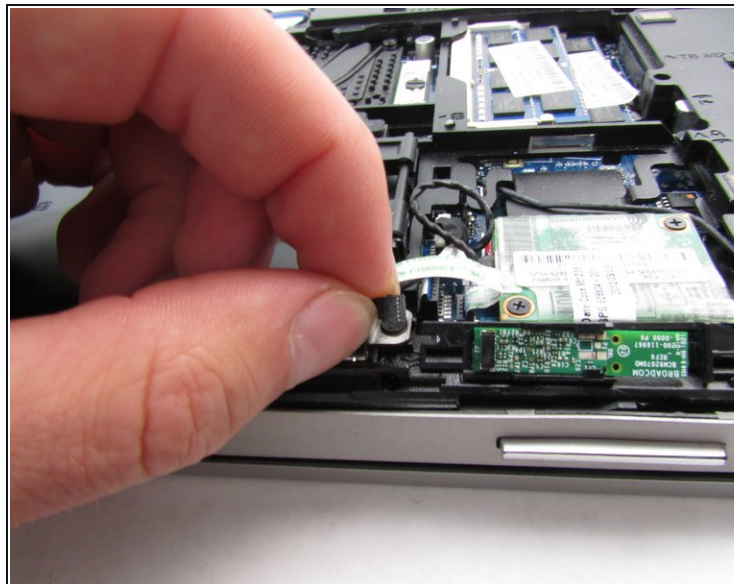
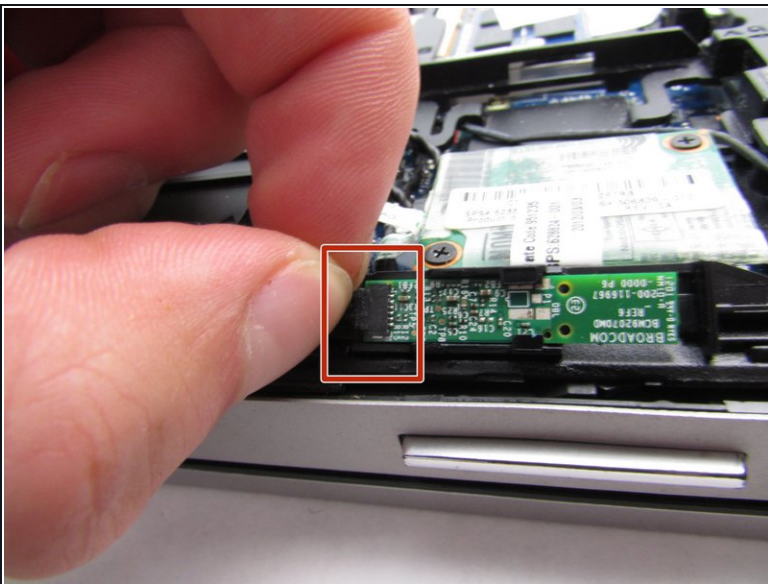
- On the back of the laptop, slide the right switch toward the outside of the laptop until you hear a click.

Step 4



- Slide the back shell of the laptop away from the switches until it can be lifted up.
- Lift the shell straight up.

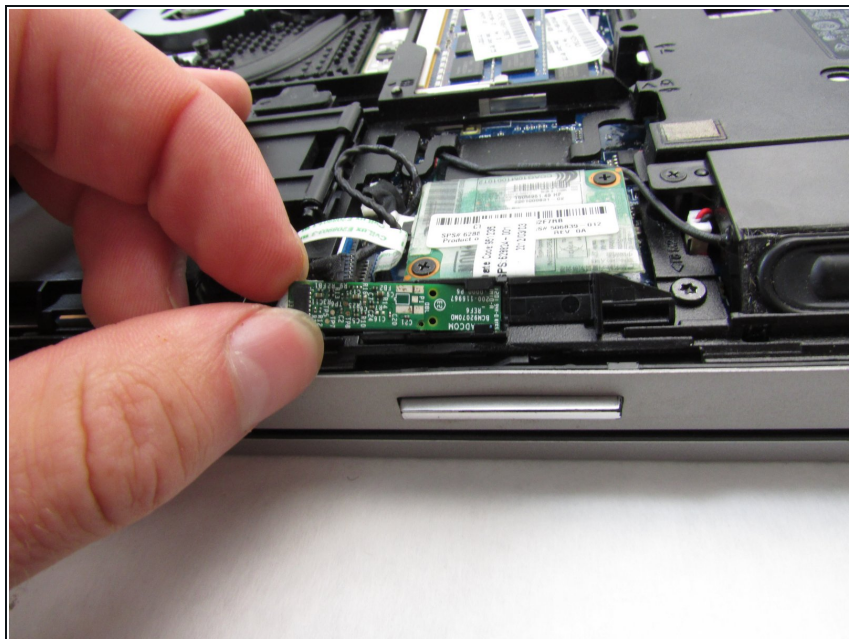
Step 5 — Bluetooth Card



 Attach an ESD strap to your wrist and to a ground.

- Using a fingernail, grasp the small connector and separate the connector from the Bluetooth card.

Step 6



- Grasp the Bluetooth card and pull it straight out to the left.

To reassemble your device, follow these instructions in reverse order.