



Asus ROG G752V Battery Replacement

Is your gaming laptop battery consistently running out of juice even when it was fully charged an hour ago? Here is a guide to help you replace the battery.

Written By: Jeong



INTRODUCTION

If your Asus ROG G752V has [lost its ability to hold a charge](#), you most likely have a dead/faulty battery which would require replacement.

A functional battery provides power to your laptop. Eventually, the laptop battery will rapidly drain after going through a repeated amount of charge cycles. If you notice that your charged battery is draining more quickly than usual, consider calibrating your battery to determine an accurate charging capacity. If you continue to notice significant drops in battery percentage, you should replace your battery.

A punctured battery can cause a dangerous fire. If your battery is swollen, [take appropriate precautions](#).

Before you begin to use this guide, make sure to power off your Asus ROG G752V completely and disconnect from any external power source.



TOOLS:

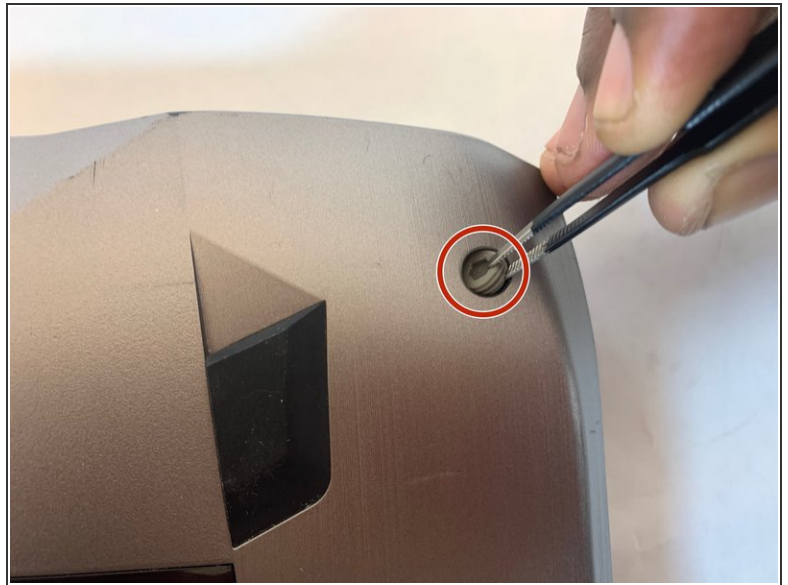
- [iFixit Opening Tools](#) (1)
- [Phillips #0 Screwdriver](#) (1)
- [Tweezers](#) (1)
- [ESD Safe Tweezers Blunt Nose](#) (1)
- [Phillips #00 Screwdriver](#) (1)




PARTS:

- [Asus G752V Battery](#) (1)

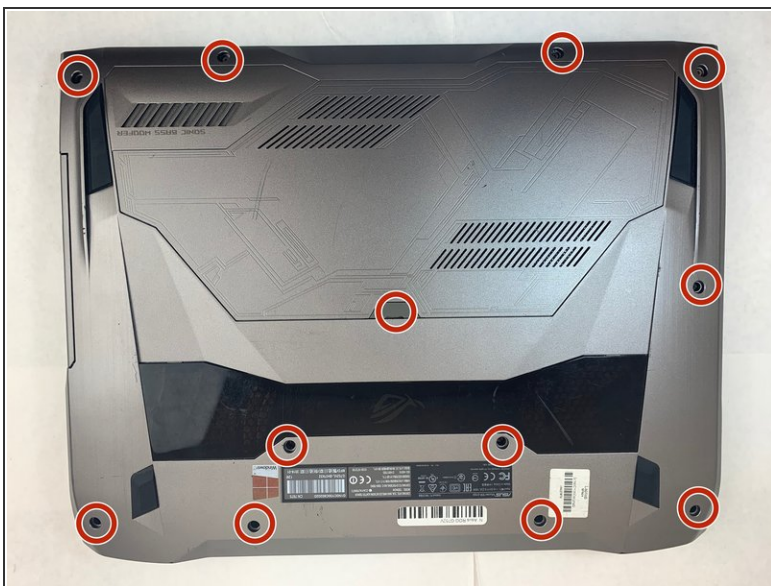
Step 1 — Battery



 Make sure you disconnect the charger before starting this guide.

- Pick out all 11 rubber plugs off of the back cover with a pair of tweezers.

Step 2



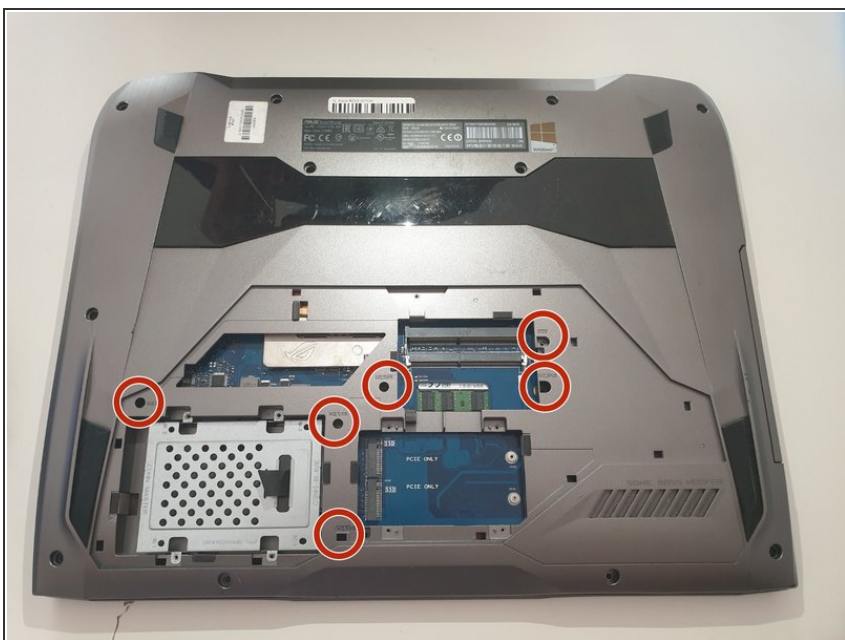
- Using the Phillips #0 screwdriver, unscrew all twelve 5.2 mm screws on the back of the laptop.
- ⓘ There is one 5.2 mm screw under the rubber plug in the middle.

Step 3



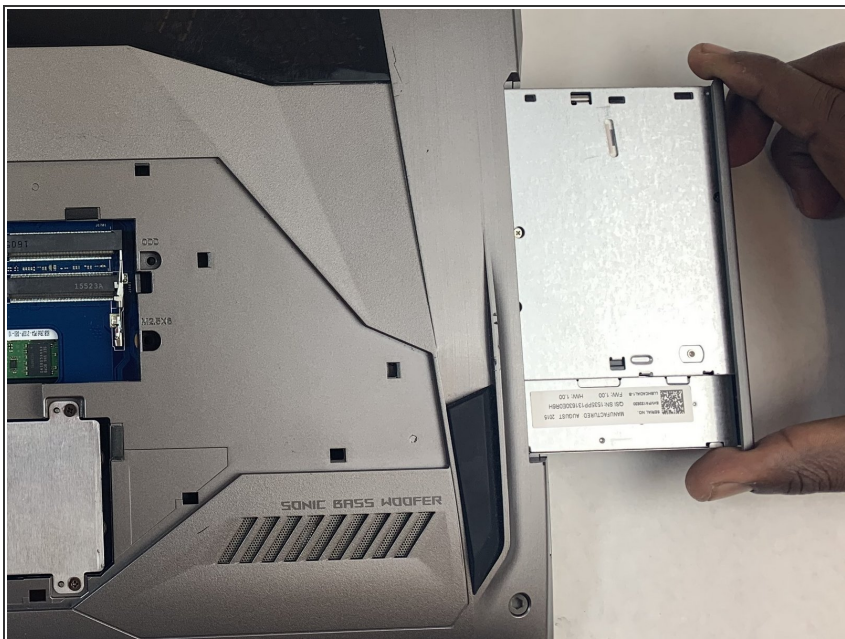
- Pull up the rubber seal and the service cover will come off.

Step 4



- Using the Phillips #00 screwdriver, remove the six 5.2 mm screws under the service cover.

Step 5



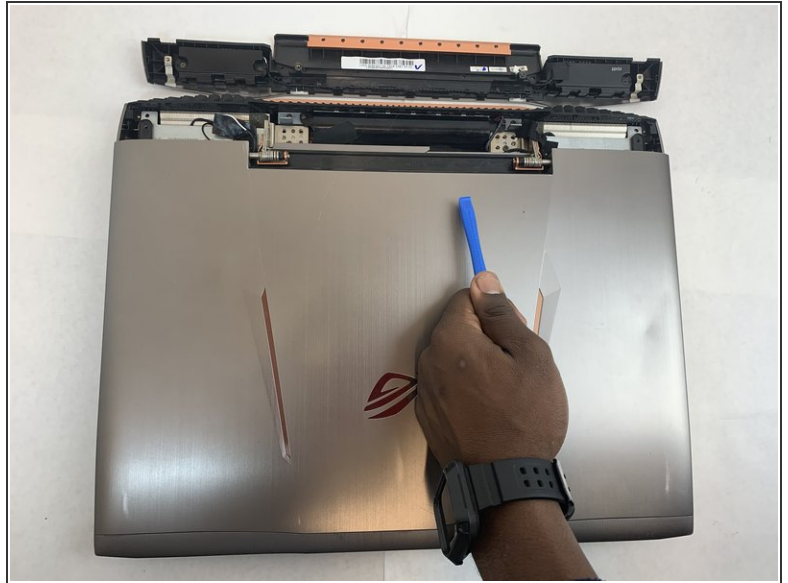
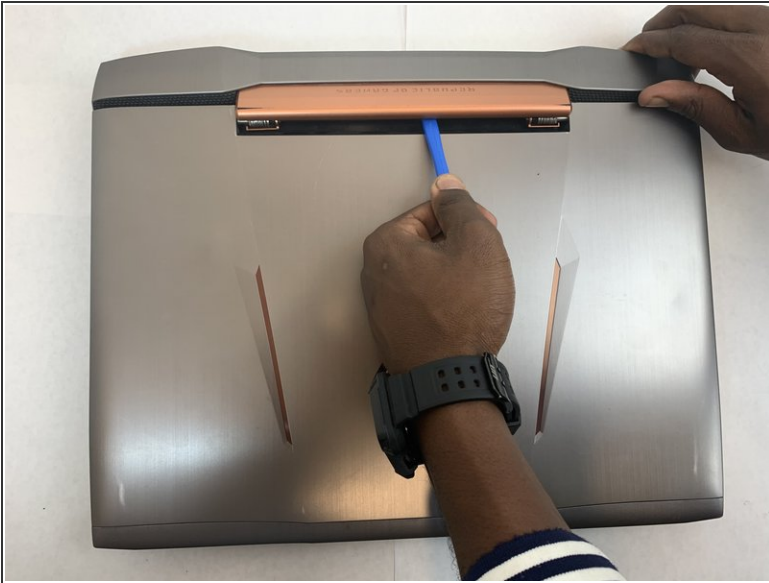
- Using your hands, pull the optical drive out.

Step 6



- Use the iFixit Opening Tool to pry apart the back panel from the main body of the laptop.
 - ❗ Start from the front side of the laptop and then continue to the side for easier access.

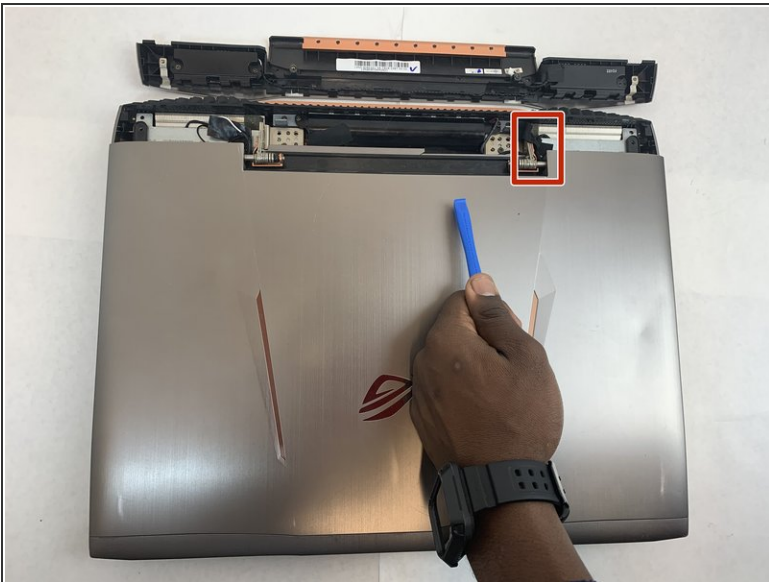
Step 7



- Remove the hinge on the back of the laptop cover using the iFixit Opening Tool. The piece should pop off.

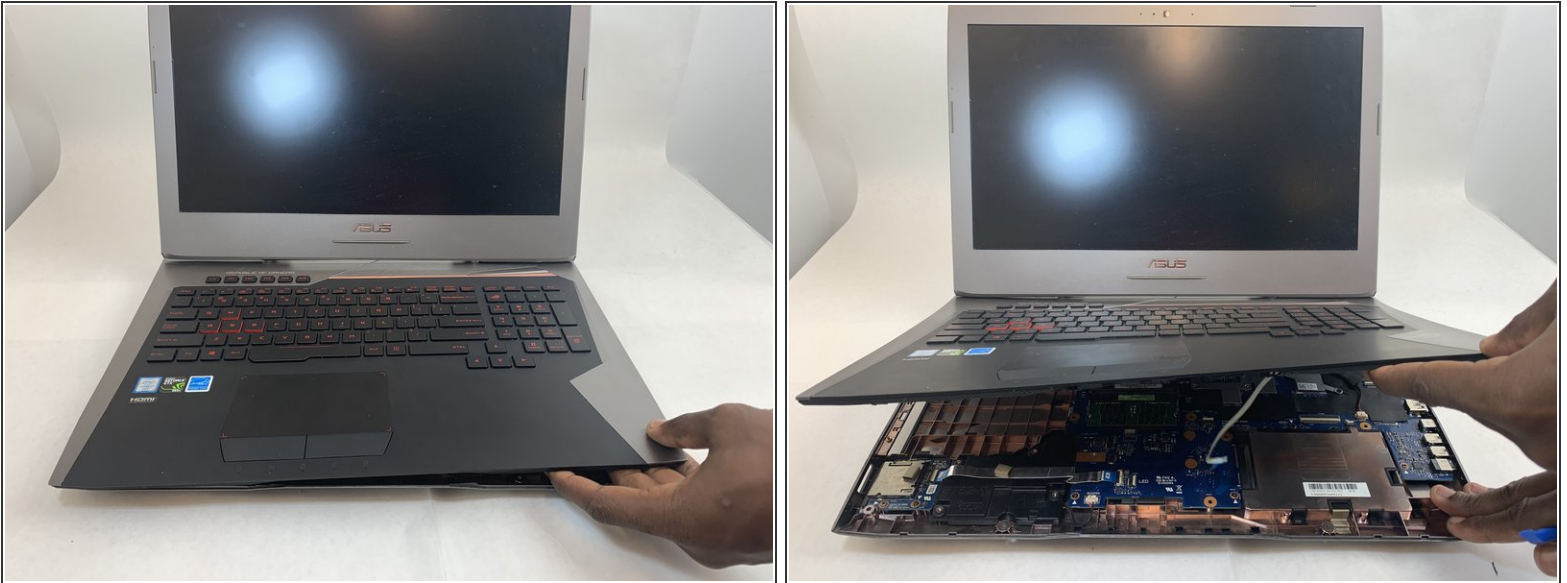
⚠ Be gentle with the cover because there is a speaker wire attached to it.

Step 8



- Disconnect the speaker wire.

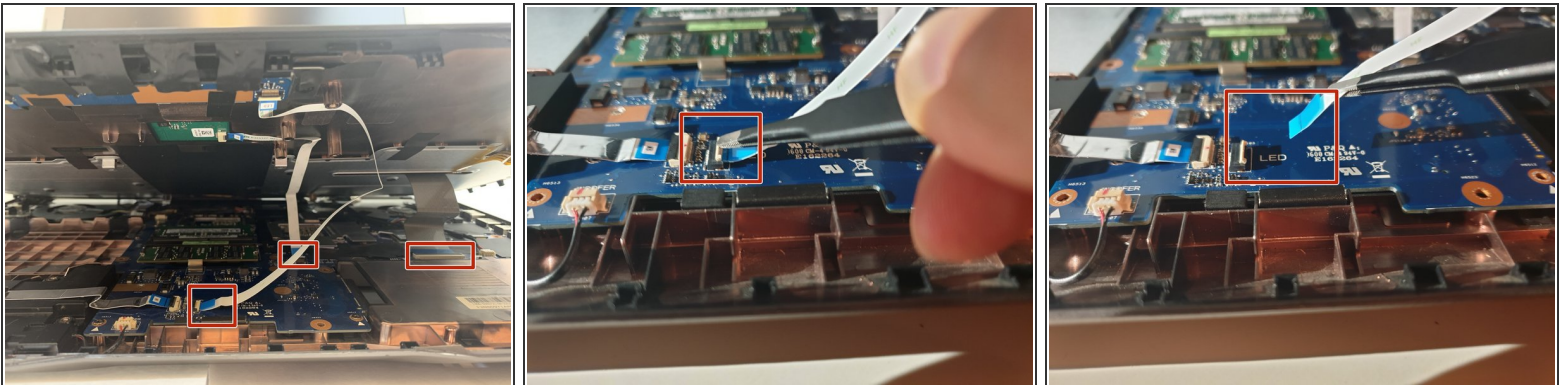
Step 9



- Slowly pull out the keyboard while lifting it about an inch.

⚠ There are cables attached to the keyboard and motherboard. DO NOT lift it more than 2 inches above the laptop.

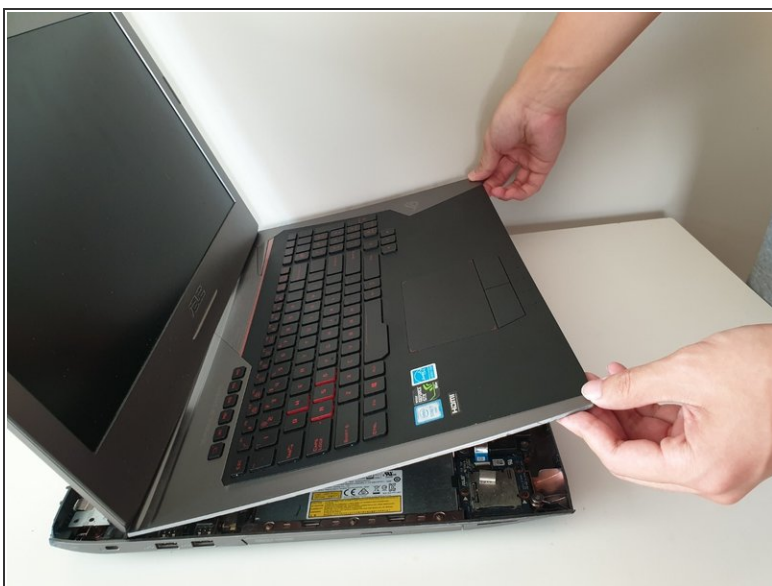
Step 10



- Using an ESD safe tool, detach all 3 ribbon cables securing the keyboard to the laptop.

ⓘ To unlock a [ZIF connector](#), use the tip of a spudger or your fingernail to flip up the small, hinged locking flap.

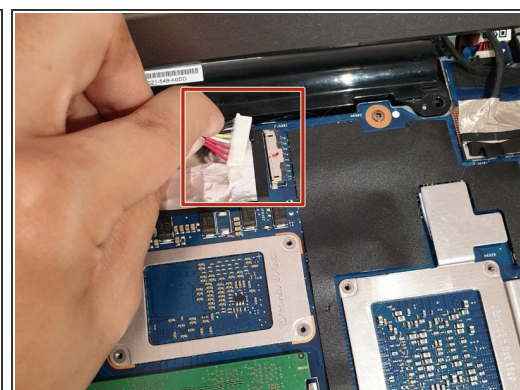
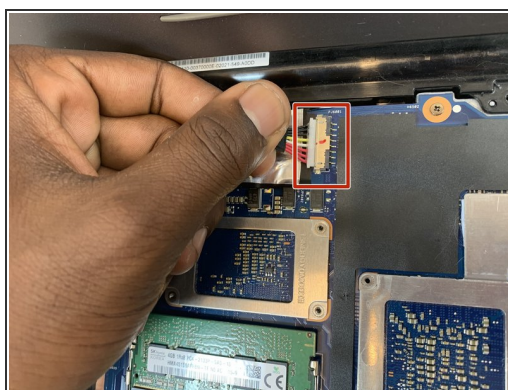
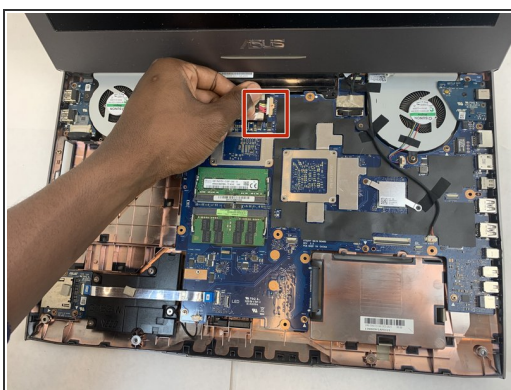
Step 11



- Once the cables are detached, lift the keyboard about 2 inches up and remove it from the rest of the body.

⚠ Make sure that the screen is open like the photo. This will ensure that none your laptop components will not be bent.

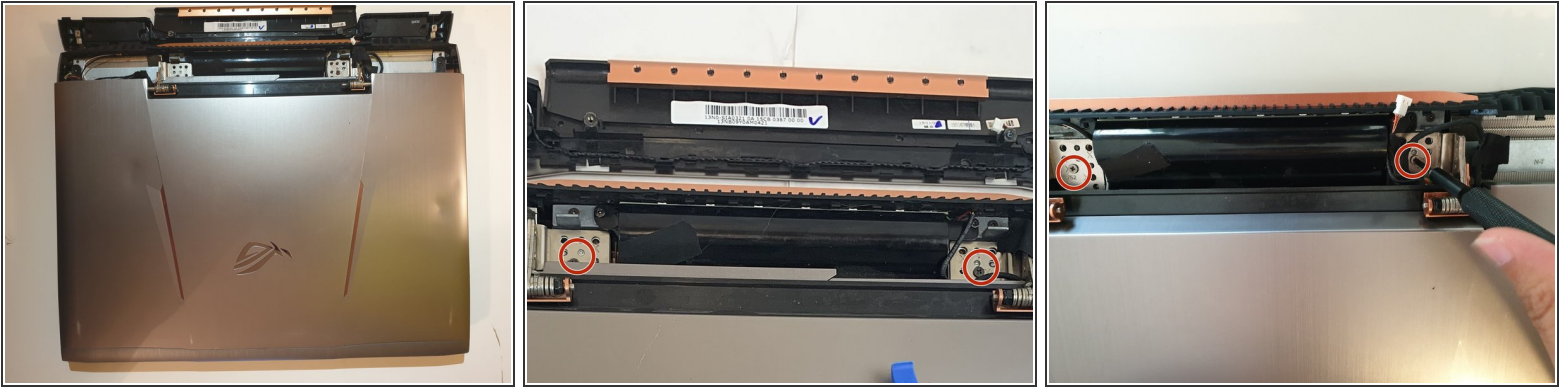
Step 12



- Disconnect the battery cable from its motherboard socket by gently pulling it towards the left of the socket.

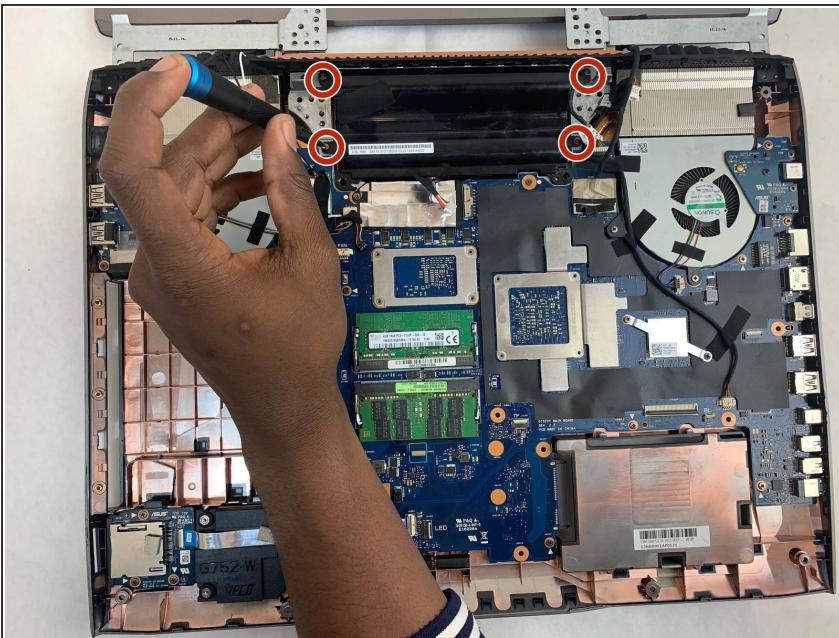
⚠ Pull parallel to the motherboard, not straight up.

Step 13



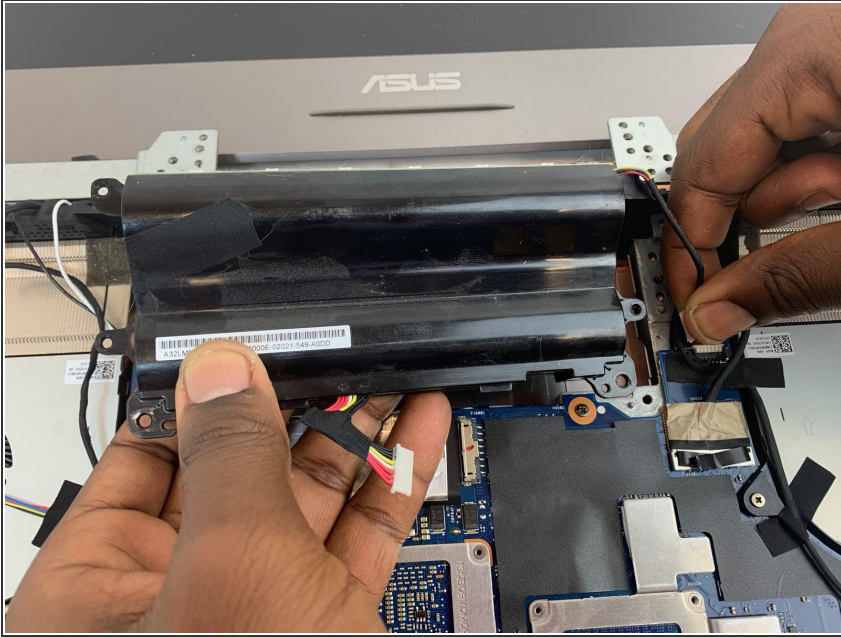
- Remove two 5.8 mm screws holding the screen and the laptop located at the hinge.
 - ⓘ This will unlatch the screen from the laptop entirely.
- Remove the screen.

Step 14



- Remove the four 5.8 mm screws securing the battery to the laptop.

Step 15



- Use your hands to remove the battery.
- ⓘ If you're having trouble, push down on the black plastic on the screen side of the battery. This should release the battery.

To reassemble your device, follow these instructions in reverse order.

For optimal performance, after completing this guide, [calibrate](#) your newly installed battery.

Take your e-waste to an [R2 or e-Stewards certified recycler](#).

Repair didn't go as planned? Try some [basic troubleshooting](#), or ask our [Answers community](#) for help.