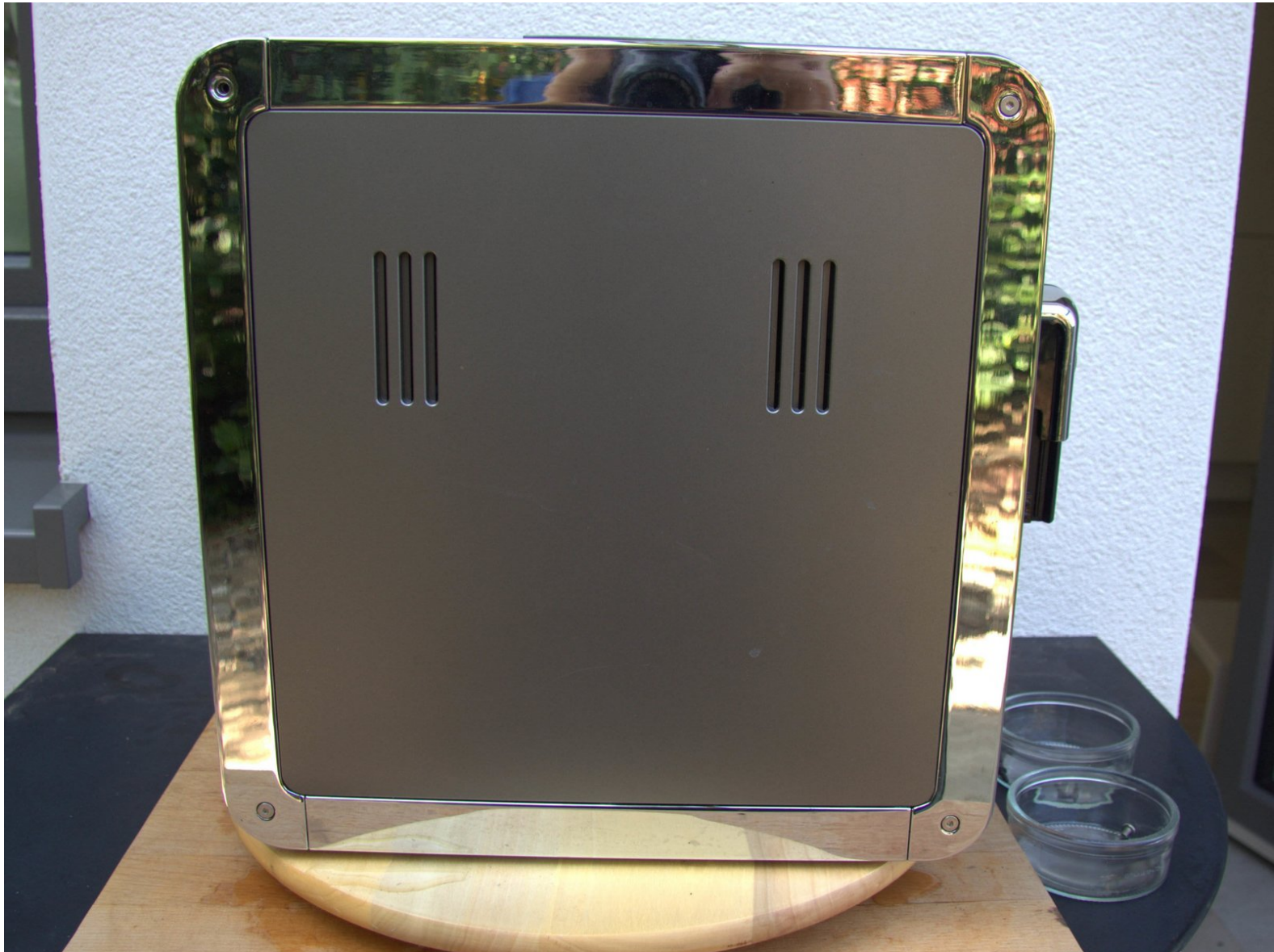




How to open the Saeco Moltio housing (with metal frame)

Opening a Saeco Moltio (with a metal frame)

Written By: VauWeh



INTRODUCTION

Most repairs require the espresso machine to be opened. This is shown here. Please note that there are models with a decorative frame made of metal (shown here) and others made of plastic.

TOOLS:

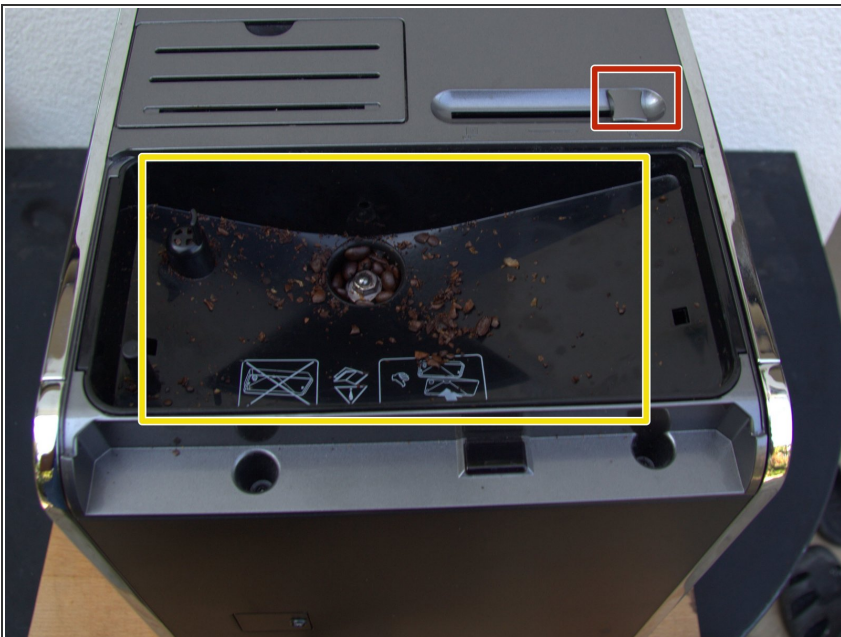
- [T10 Torx Screwdriver](#) (1)
 - [iFixit Opening Tools](#) (1)
-

Step 1 — How to open the Saeco Moltio housing (with metal frame)



- First check which model you have in front of you: Is the decorative frame made of chromed metal (picture 1) or of metallized plastic? (picture 2). In the second case follow [this guide](#), in the first case you are in the right place here.

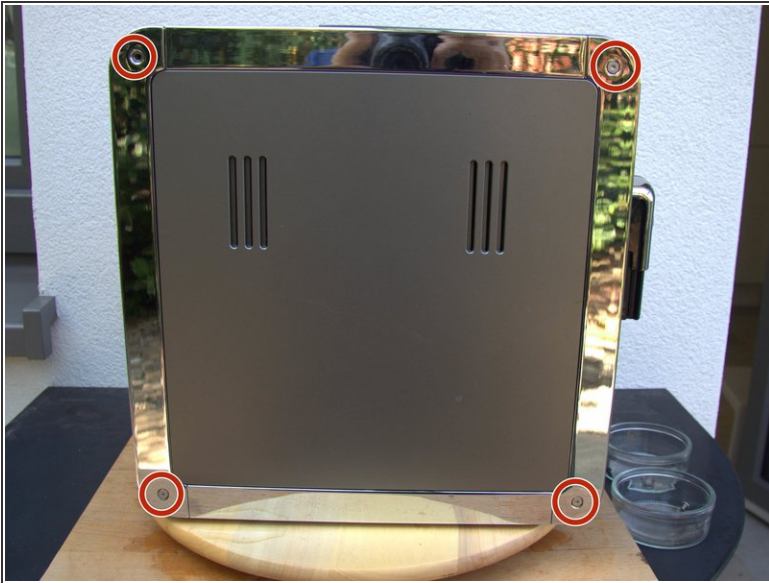
Step 2



⚠ Never forget to remove the power!

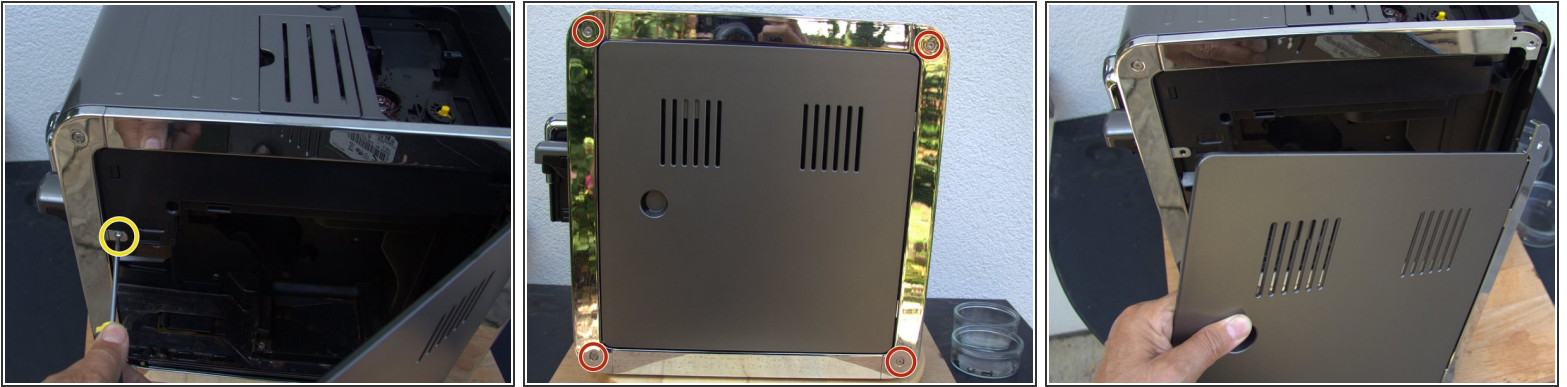
- Remove the water reservoir, the brew unit, the milk reservoir, the lid for the bean storage and the drip tray.
- Remove the lock on the bean storage container by pushing the button inwards.
- Lift the bean storage container out.

Step 3



- Remove the 4 Torx T10 screws from the left metal frame.
- Remove the lower 3 parts of the metal frame.

Step 4



- Open the maintenance lid.
- Remove the Torx T10 screw from the metal frame.
- Remove the 4 Torx T10 screws from the corners of the metal frame.
- The maintenance lid is fixed to the back of the metal frame. Lift it away outwards to remove it.
- Remove the lower parts of the metal frame.

Step 5



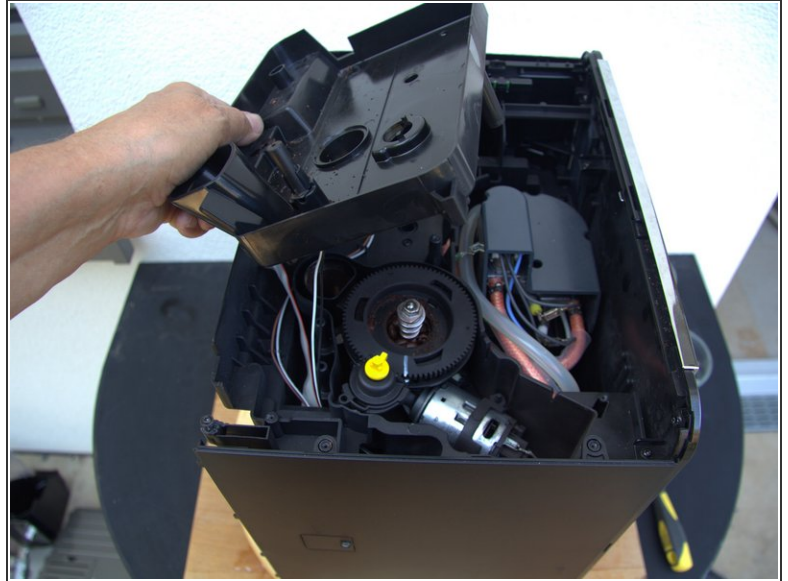
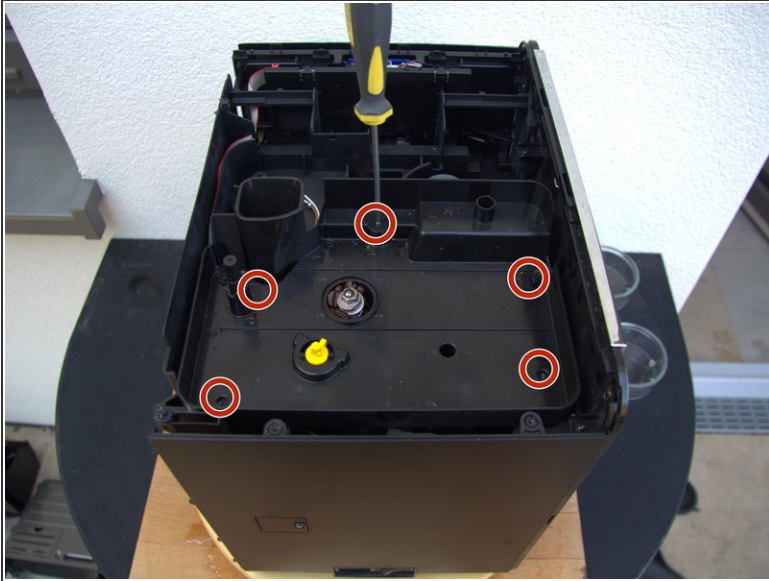
- Remove the 4 Torx T10 screws.
- The upper part of the right metal frame is secured by 2 partially hidden Torx T10 screws. You can reach the back one of the two through the opening in the right corner in the back. Loosen the screw in order to slide the metal frame slightly outwards.
- Remove the 2 screws holding the closing mechanism for the bean storage container.
- The screw at the front of the metal frame should now be within reach and you can remove the metal frame completely. This wasn't done this way here however.

Step 6



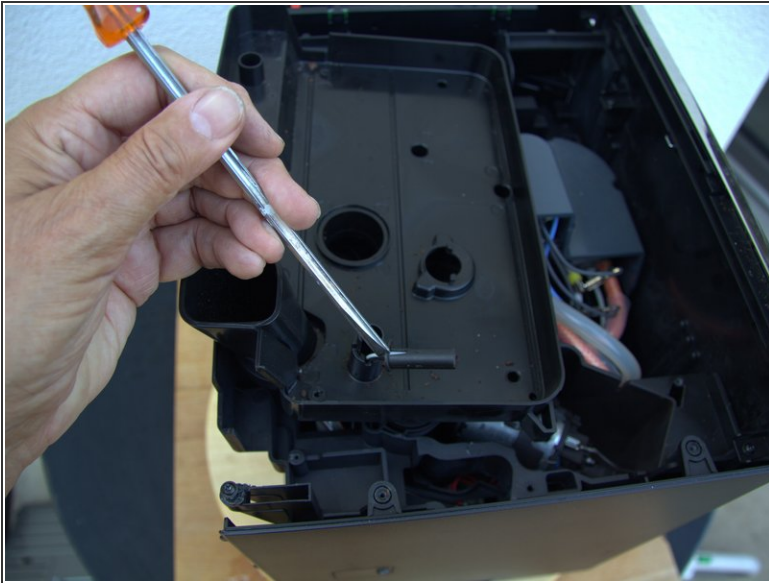
- Carefully lift the upper cover from the device.
- ⓘ When reassembling the device, make sure the slider for the unlocking mechanism of the bean storage container is pushed back into its place correctly.
- Lift the unlocking mechanism out of the bean storage container.

Step 7



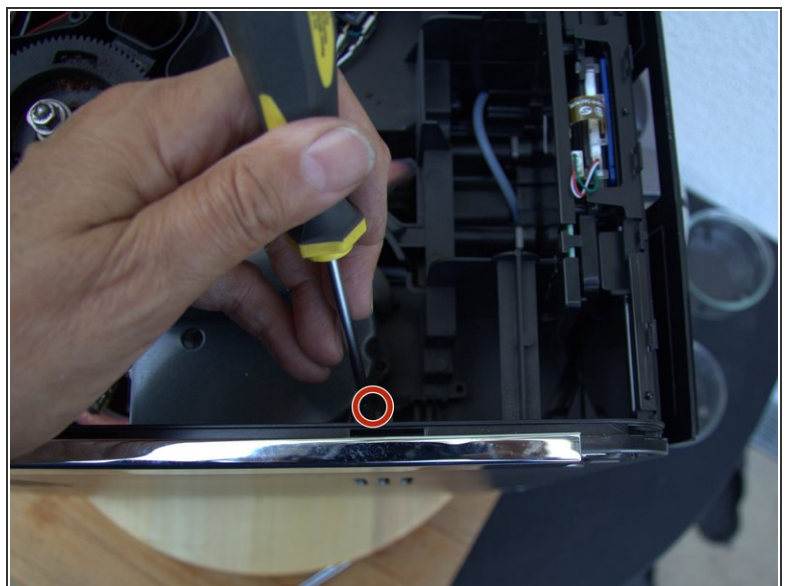
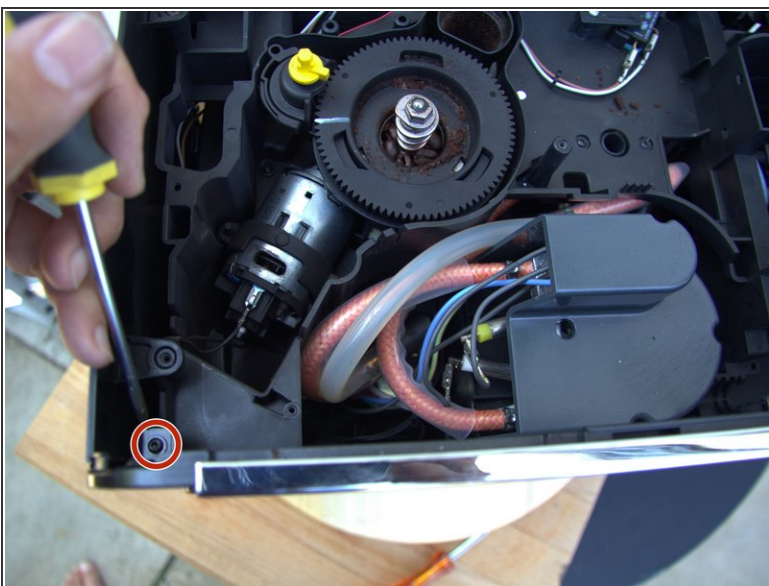
- i** In the next step, the carrier plate for the bean container will be removed. Do not remove it yet because a data cable still connects it to the sensor on the bean lid.
- The plate is secured with five Torx T10 screws. Remove those if you have not done so already.
 - Lift the plate, but do not remove it entirely yet. The sensor for the bean compartment's lid has to be removed first.

Step 8



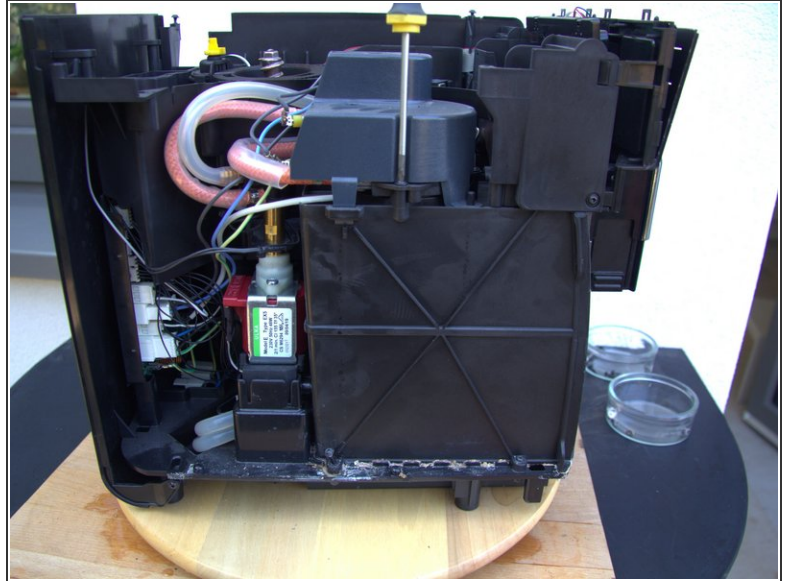
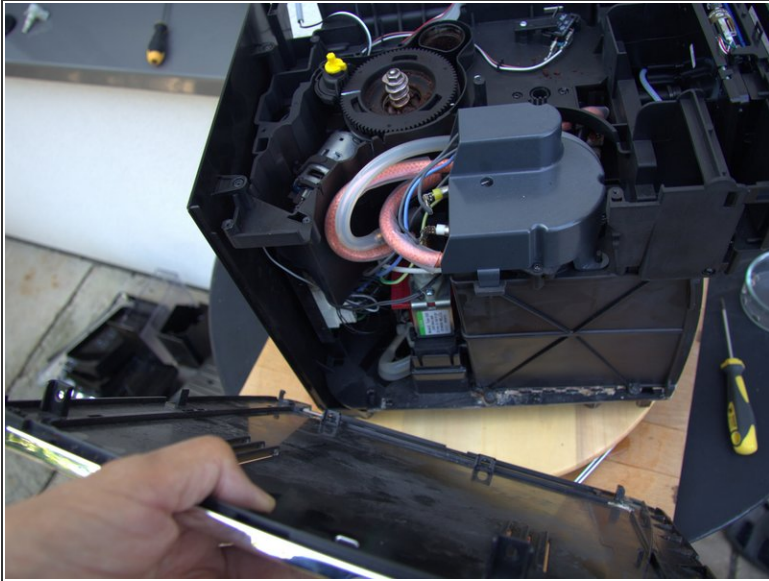
- Carefully push aside and remove the lid by the bean lid sensor.
- Let the sensor drop through the opening.
- Remove the carrier plate for the bean lid.

Step 9



- The left side is still attached via two Torx T10 screws at the top. Remove them.

Step 10



- Now the left side is clear and can be removed upwards.

To reassemble your device, follow these instructions in reverse order.