



Nintendo GameCube Controller Circuit Board Replacement

This guide will demonstrate proper removal of the controller's logic board.

Written By: Sean Michel



INTRODUCTION

The circuit board connects all the components within the controller and provides structural support for buttons, sticks, and chips.



TOOLS:

- [Tri-point Y0 Screwdriver](#) (1)
 - [Tweezers](#) (1)
-

Step 1 — Back Panel



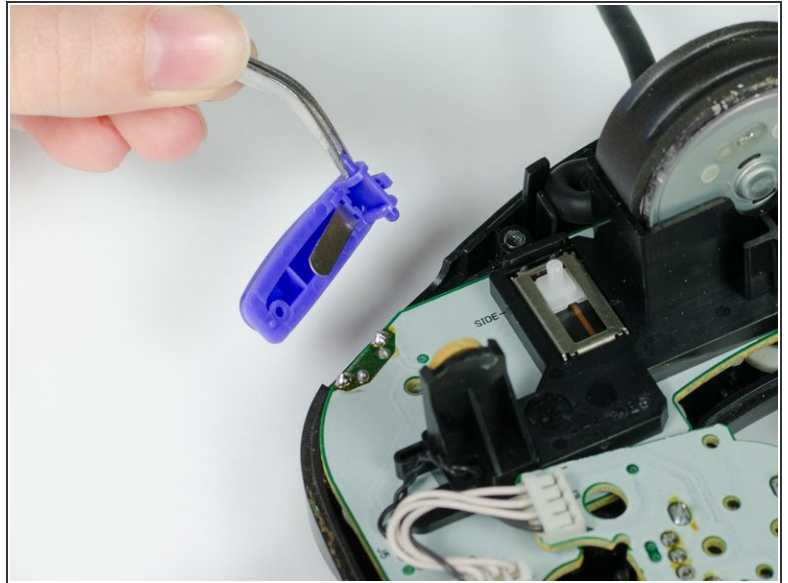
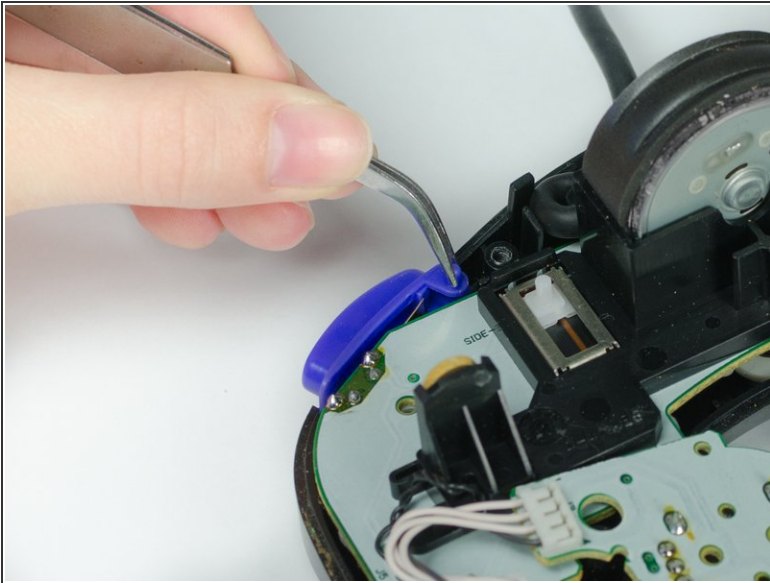
- Place the controller (buttons down) on a solid surface.
- Remove the six 9.2mm Tri-wing Y0 screws that hold the back panel in place.

Step 2



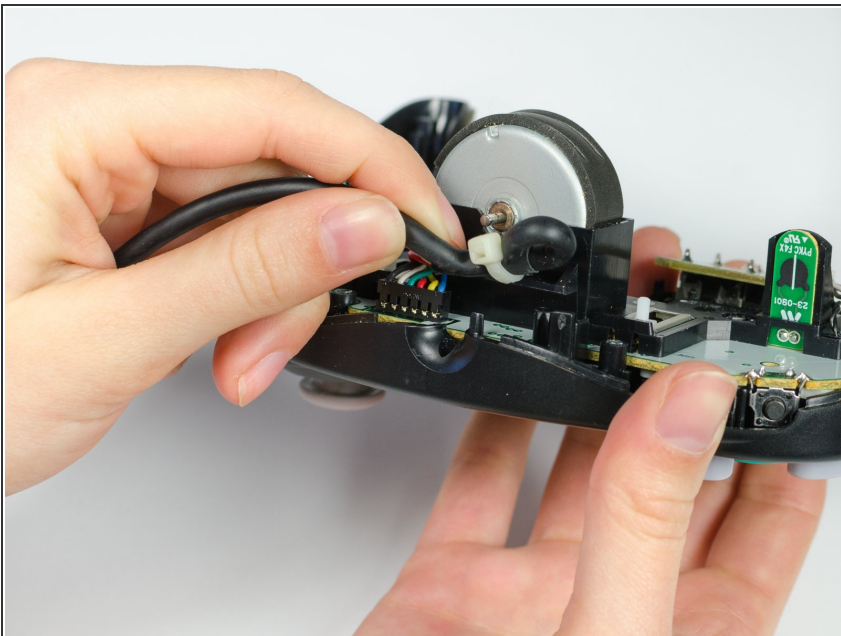
- Gently lift the back panel up, separating it from the front panel.
- ⓘ Some of the buttons may fall out if they are knocked around.

Step 3 — Z Button



- Grab the Z-button by the peg with tweezers and lift it out of the controller.
- ✦ During re-assembly, make sure the plastic rim and spring fit into the slot provided, or else the case will not shut.

Step 4 — Circuit Board



- Carefully unhook the cable that is looped around the peg.

Step 5



- Lift the circuit board out of the controller.
- ⓘ Do not grab the rumble motor to lift the circuit board as shown in the picture. It will in many cases just remove the rumble motor. Instead, grab the edges of the board.

To reassemble your device, follow these instructions in reverse order.