



# Wiko Rainbow Jam 4G Display Replacement

Use this guide to replace a display or to have access to other components.

Written By: Smilzo

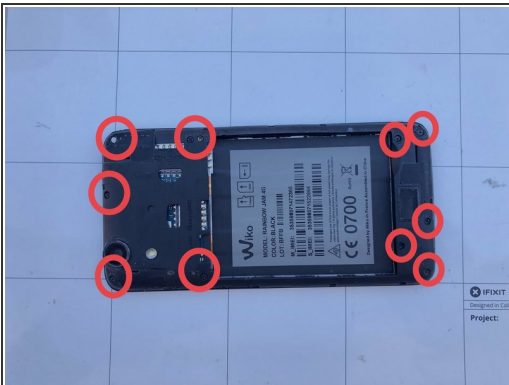


## Step 1 — Display



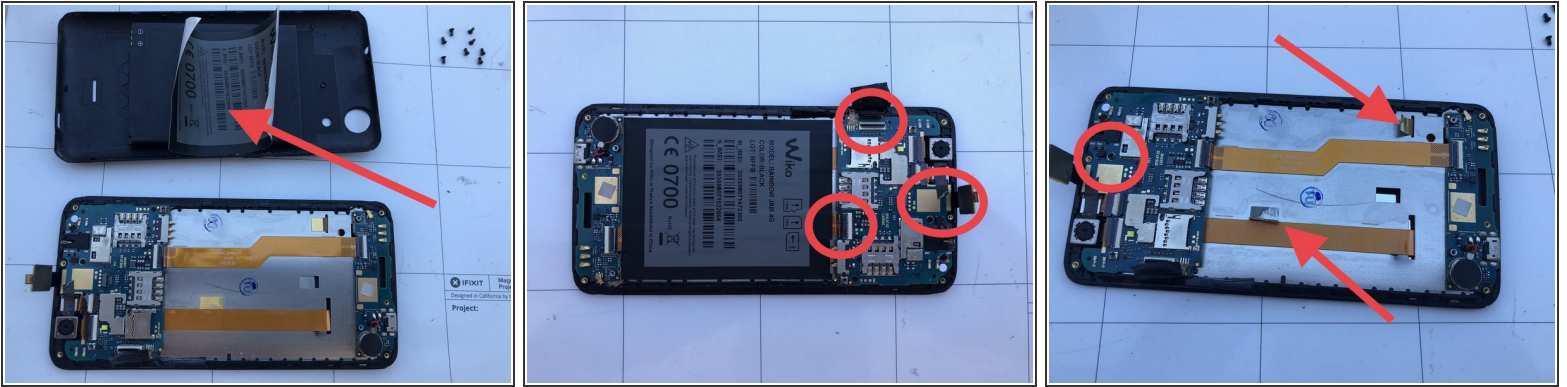
- Remove the back cover and the battery

## Step 2



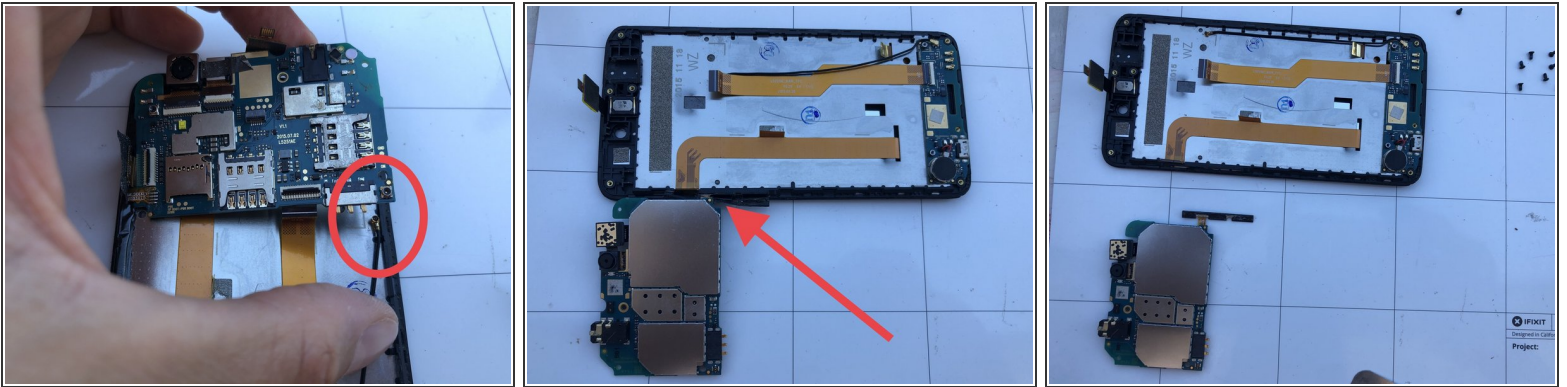
- Using a Phillips screwdriver, remove the screws
- Using a thin tool or a blade detach the midframe from the the display assembly

## Step 3



- Remove the sticker with a heat source, for example using a hair dryer
- Unplug the marked connector on the motherboard
- Remove the stickers that holds the flat under the big sticker you removed earlier. Now remove the marked screw that keeps the motherboard in place

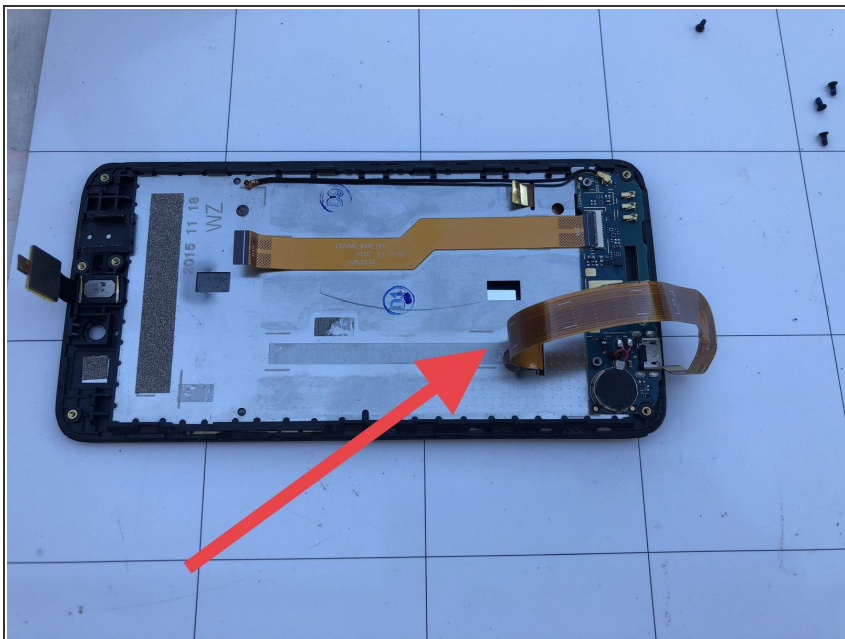
## Step 4



- Lift the motherboard and unplug the antenna cable
- Using heat and a blade, remove the adesive holding the volume/power button
- Remove the motherboard

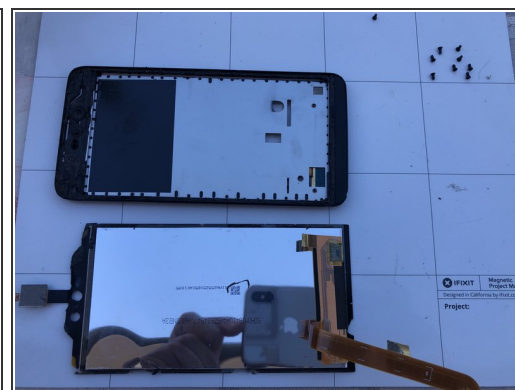


## Step 5



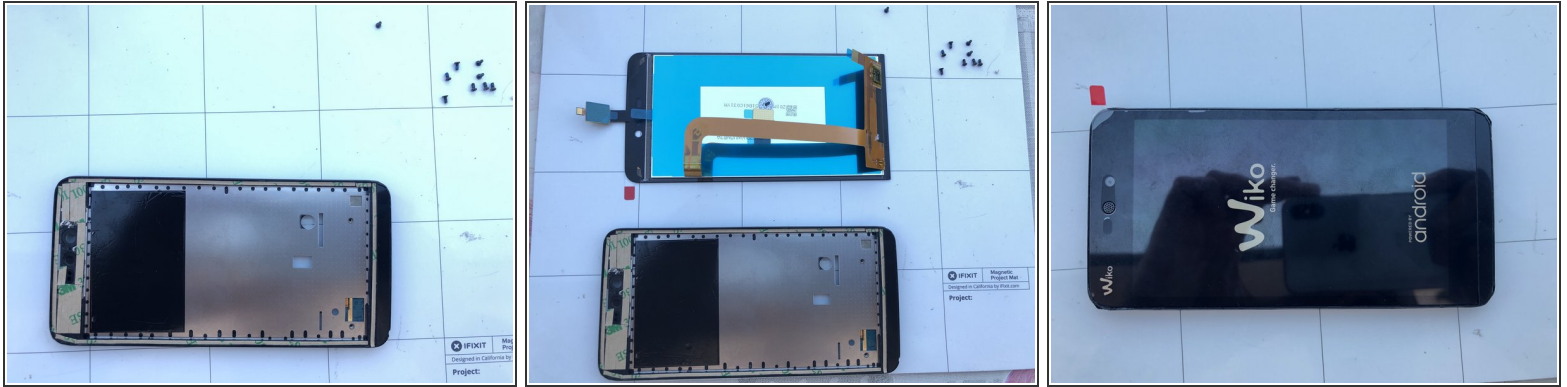
- Remove the flat cable interconnecting the display and the motherboard. It's glued on the back of the frame.

## Step 6



- Heat the display edges to soften the glue. Gradually insert a thin blade to remove the faulty display.
- Remove the old adhesive and clean carefully the surface before you apply the new adhesive.

## Step 7



- Apply the double sided tape on the edges of the frame so the enclosure is ready for a new display.

To reassemble your device, follow these instructions in reverse order.