



Huawei Honor 8 Battery Replacement

Use this guide to replace a worn-out or dead...

Written By: Dominik Schnabelrauch



INTRODUCTION

Use this guide to replace a worn-out or dead battery in your Huawei Honor 8.

If your battery is swollen, [take appropriate precautions](#). **For your safety, discharge your battery below 25% before disassembling your phone.** This reduces the risk of a dangerous thermal event if the battery is accidentally damaged during the repair.

You'll need replacement adhesive to reattach components when reassembling the device.

TOOLS:

[Tweezers](#) (1)
[iOpener](#) (1)
[iFixit Opening Picks \(Set of 6\)](#) (1)
[Suction Handle](#) (1)
[Phillips #00 Screwdriver](#) (1)
[Spudger](#) (1)
[Plastic Cards](#) (1)

PARTS:

[Huawei HB366481ECW Replacement Battery](#) (1)

Step 1 — Rear Glass



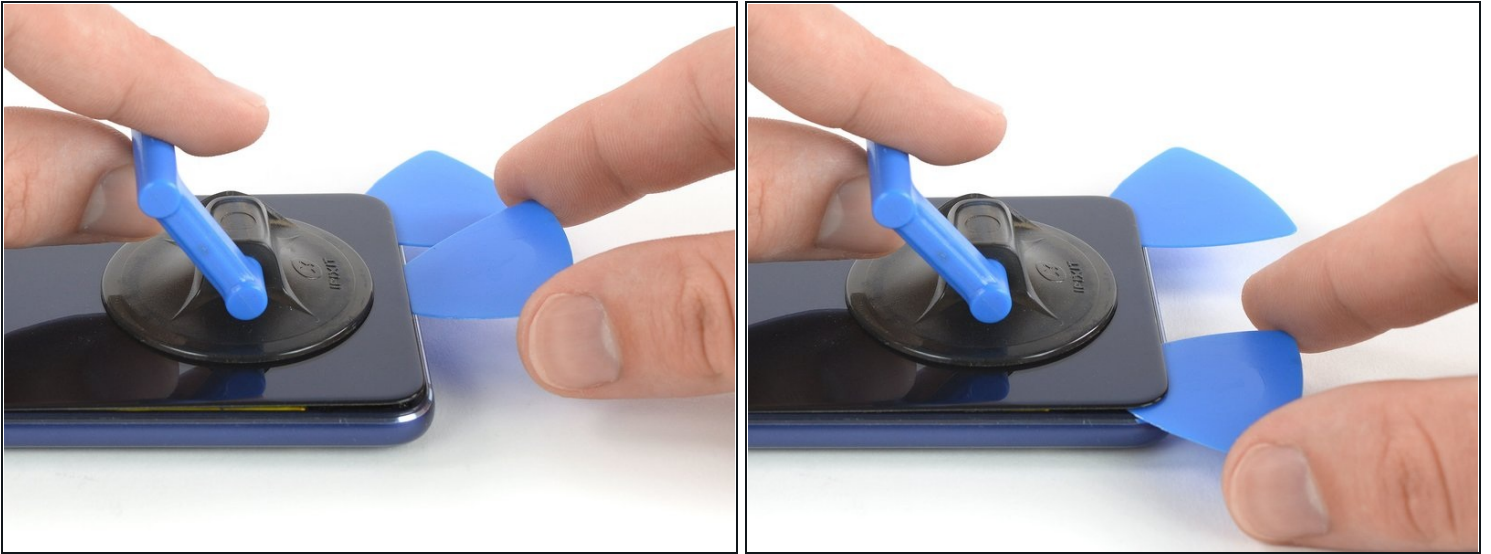
- Before you begin, switch off your phone.
- Apply a [heated iOpener](#) to the back of the phone to loosen the adhesive beneath the rear glass. Apply the iOpener for at least two minutes.

Step 2



- ① If the phone's rear glass is cracked, the suction cup may not stick. Try [lifting it with strong tape](#), or superglue the suction cup in place and allow it to cure so you can proceed.
- Secure a suction handle to the lower edge of the rear glass, as close to the edge as possible.
- Lift the rear glass with the suction cup to create a small gap between the glass and the frame.
- Insert an opening pick into the gap.
 - ① If you have trouble, apply more heat to further soften the adhesive. Follow the iOpener instructions to avoid overheating.
- Slide the opening pick to the bottom right corner.

Step 3



- Insert a second opening pick and slide it to the bottom left corner to cut the adhesive.
- Leave the opening picks in place to prevent the adhesive from resealing.

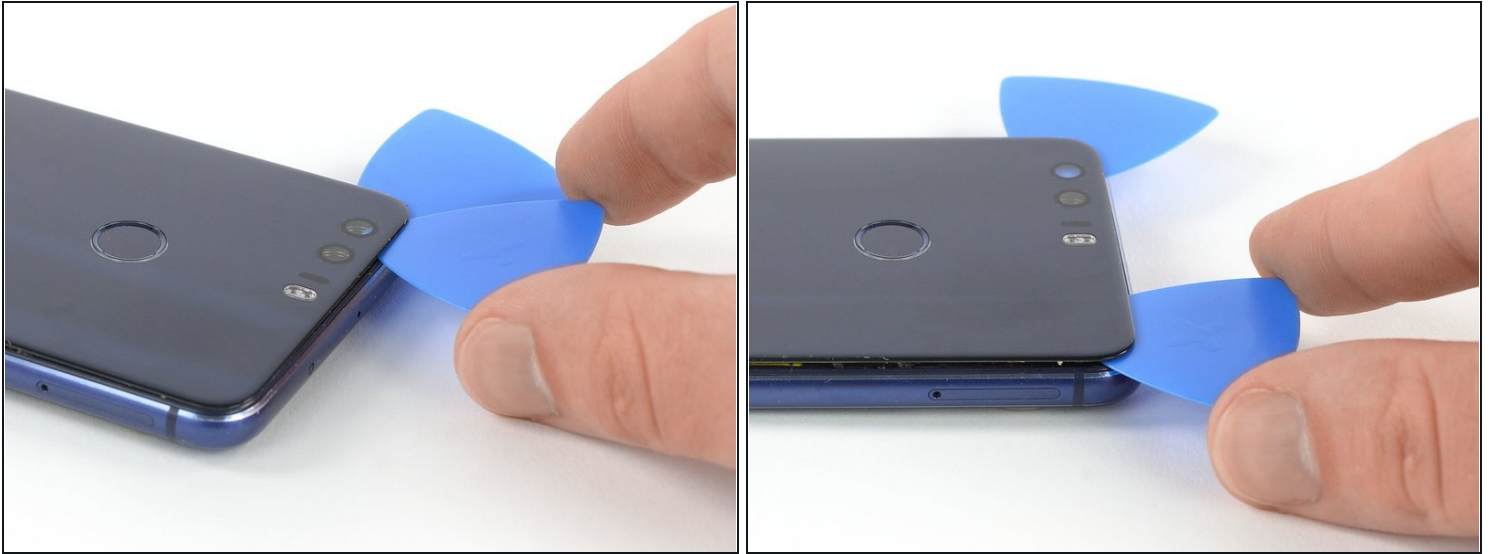
Step 4



⚠ The fingerprint cable is located above the power and volume buttons on this side of the phone. Only use the tip of the opening pick in this area to avoid damage.

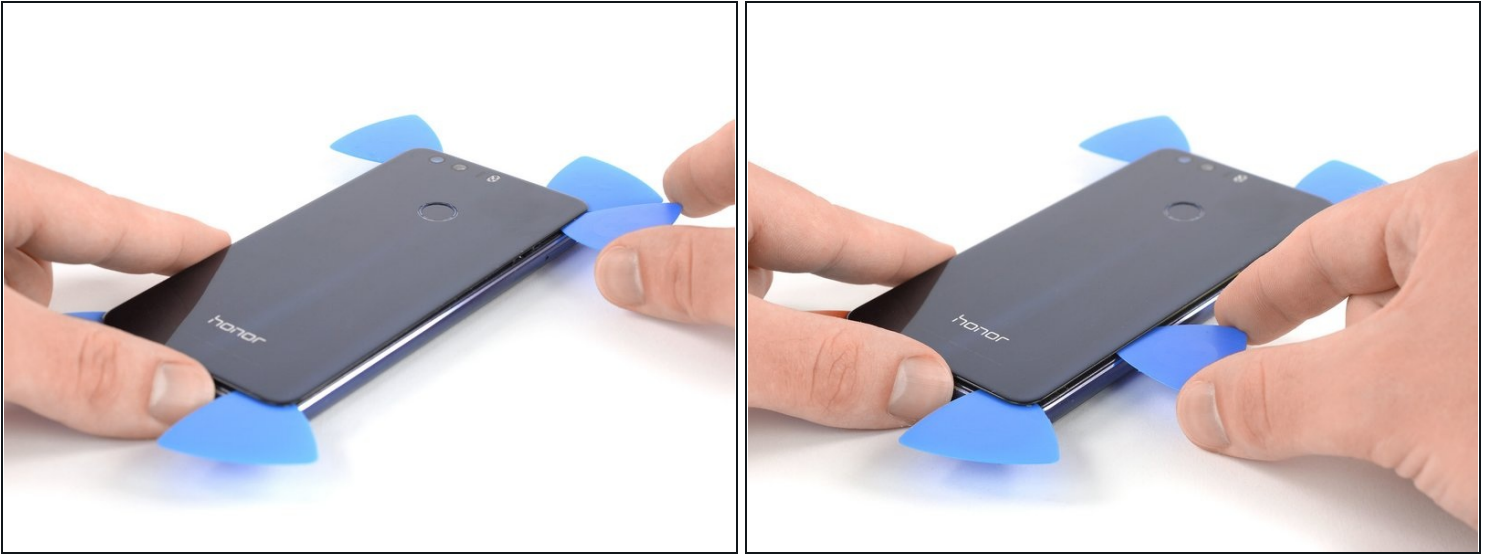
- Insert a third opening pick at the bottom left corner.
- Start to slide the tip of the opening pick from the bottom left corner along the side to cut the adhesive.
- Leave the opening pick in its place at the top left corner to prevent the adhesive from resealing.

Step 5



- ⓘ If the adhesive gets hard to cut it most likely cooled down. [Use your iOpener](#) to reheat it.
- Insert a fourth opening pick under the top left corner of the rear glass.
 - Slide the opening pick along the top edge of the phone to cut the adhesive.
 - Leave the opening pick in the top right corner to prevent the adhesive from resealing.

Step 6



- Insert a fifth opening pick at the top right corner of the phone.
- Slide the opening pick along the right side to cut the remaining adhesive.

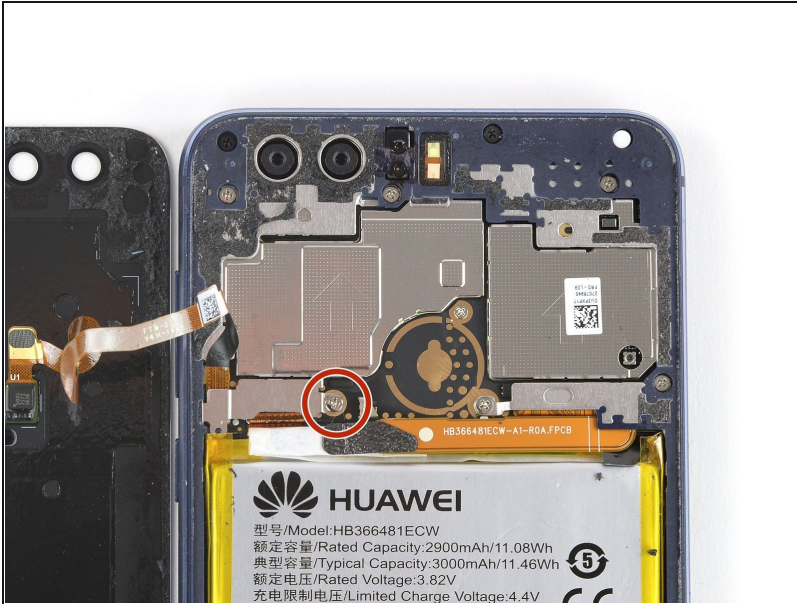
⚠ The fingerprint cable is still connected to the motherboard. Don't try to remove the rear glass all the way yet.

Step 7



- Carefully lift the rear glass and fold it to the left side of the Honor 8.

Step 8



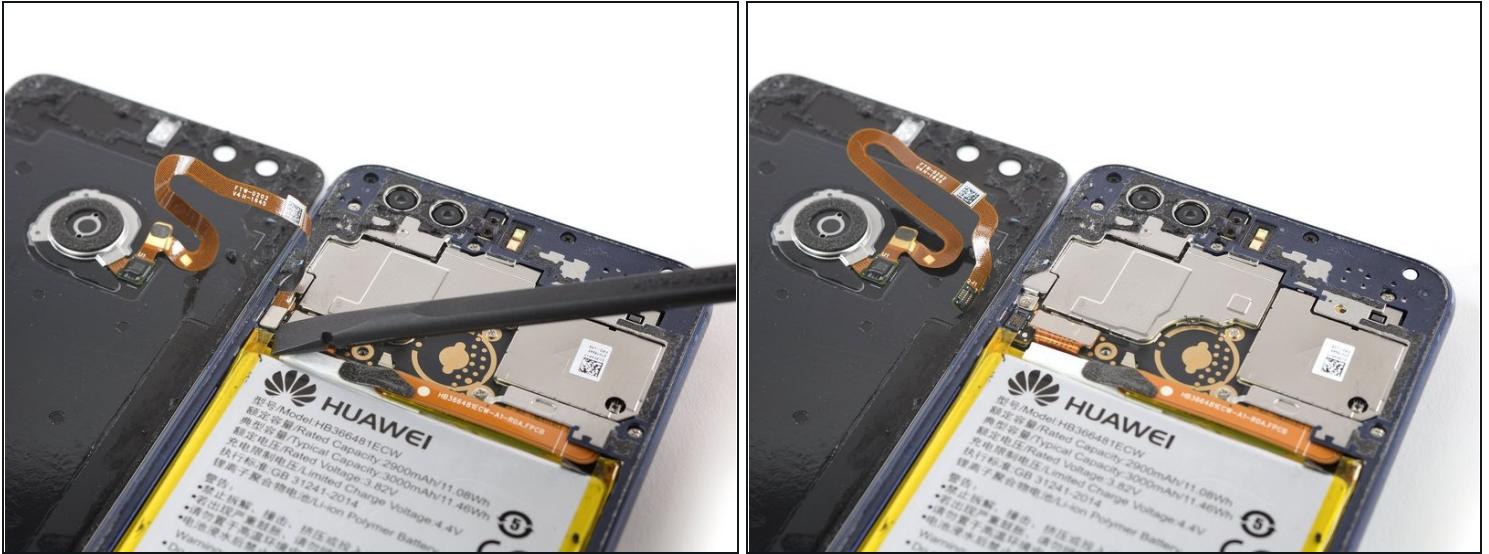
- Remove the Phillips #00 screw (2.8 mm length) that secures the metal bracket on top of the fingerprint flex connector.

Step 9



- Use a pair of [tweezers](#) to remove the metal bracket that sits on top of the fingerprint and display flex connectors.

Step 10



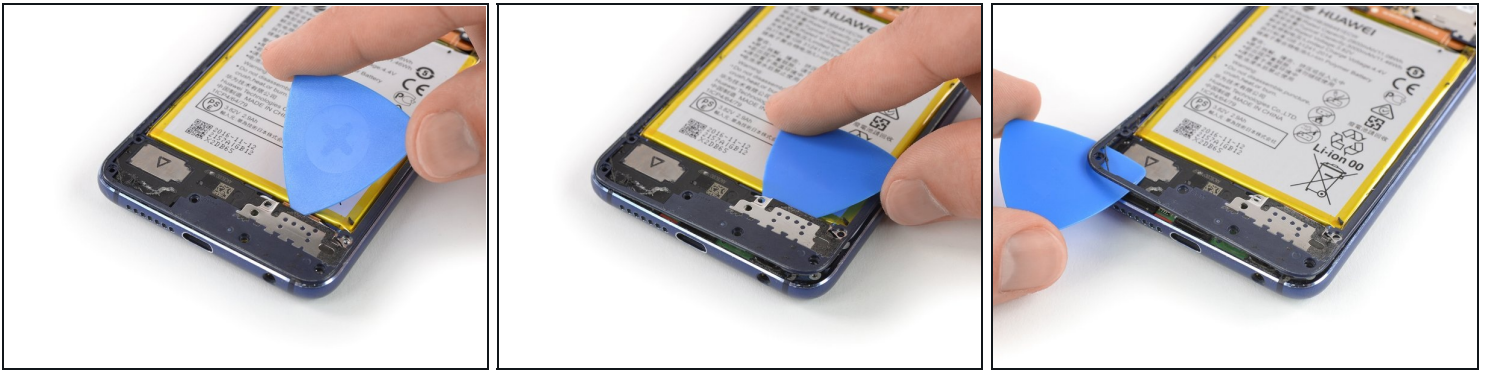
- Use a spudger to pry up and disconnect the fingerprint flex connector.

Step 11 — Midframe Bezel



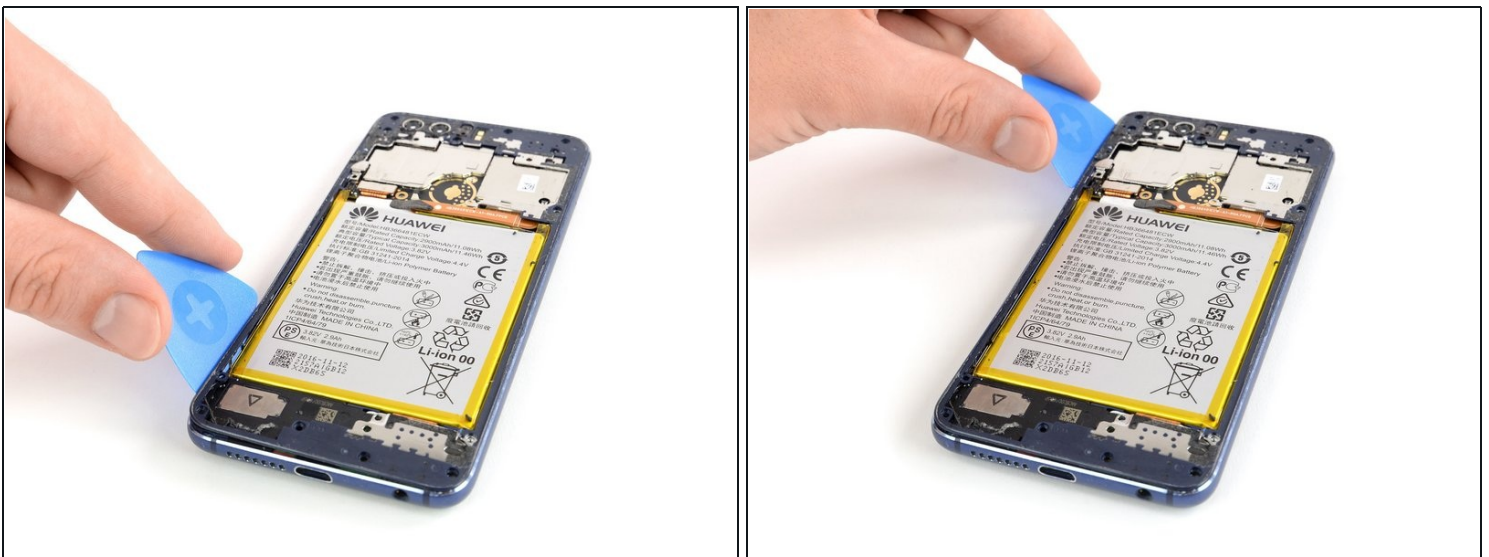
- Remove these Phillips #00 screws securing the midframe bezel:
 - Eight screws with 3.5 mm length
 - Eight screws with 2.9 mm length
- Some screws might be covered with a tamper proof sticker.

Step 12



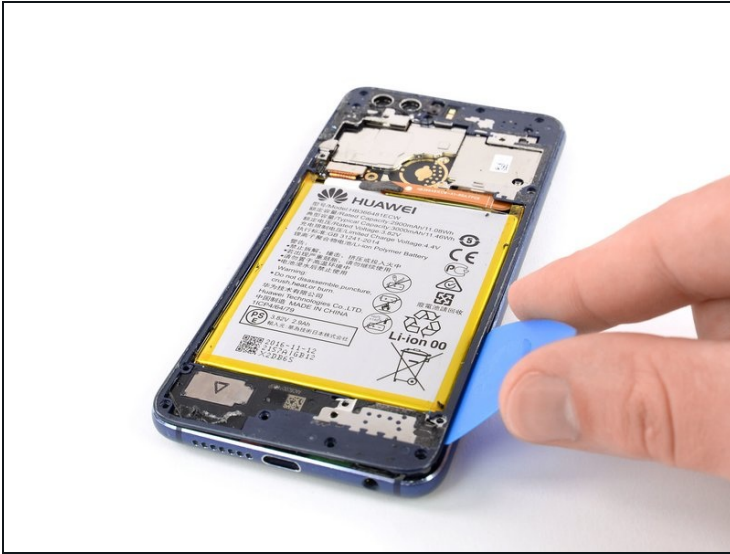
- Insert an opening pick underneath the top right edge of the midframe bezel.
- Use the opening pick to pry up the midframe bezel.
- Insert the opening pick underneath the bottom left corner of the bezel and pry it up.

Step 13



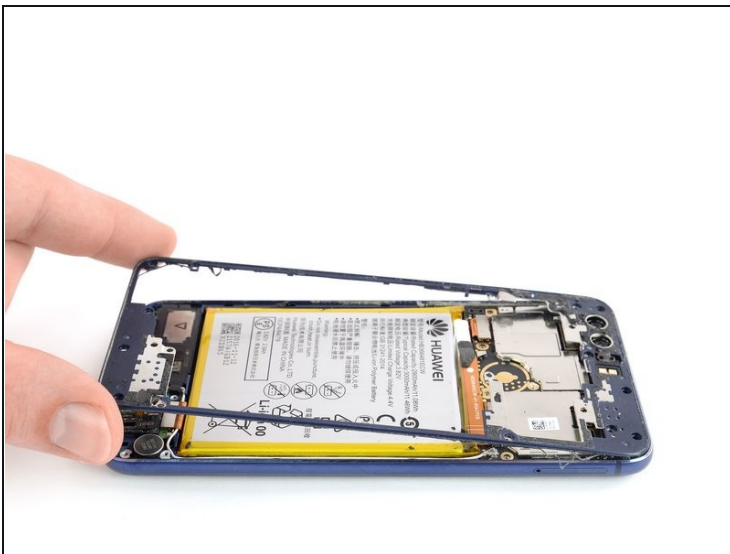
- Insert the long edge of an opening pick in the seam between the midframe and the bezel on the left side of the phone.
- Slide the opening pick along the left side of the phone to cut the adhesive underneath the midframe bezel.

Step 14



- Repeat the procedure on the right edge of the phone to cut the adhesive underneath the midframe bezel.

Step 15



- Carefully grasp the midframe bezel from the bottom corners and lift it upwards.
- Remove the midframe bezel.

Step 16 — Battery Disconnect



- Use a spudger to pry up and disconnect the battery flex cable.

Step 17 — Battery



- Use a pair of [tweezers](#) to lift the black adhesive pull tab off of the top right corner of the battery.
- Use a pair of tweezers to pull out the adhesive strip.
 - ① Make sure you pull out the strip in a slow and steady motion and in a flat angle. To prevent the adhesive strip from ripping, it is helpful to twist the strip around the tweezers during the removal process.
 - ① In case the adhesive strip rips, follow the next three steps.

Step 18



- [Apply a heated iOpener](#) to the screen for at least two minutes to loosen the adhesive beneath the battery.
 - ⓘ The adhesive beneath the battery is very strong. You might need to repeat this process during the removal procedure several times. If heat does not work you can apply isopropyl alcohol (>90%) to the corners of the battery and let it penetrate the adhesive for several minutes before continuing.
- ⚠ The flex cables underneath the battery are laid out as shown in the image. Try to avoid prying close to the marked areas to prevent damaging the cables.
 - Display flex cable
 - Interconnect flex cable

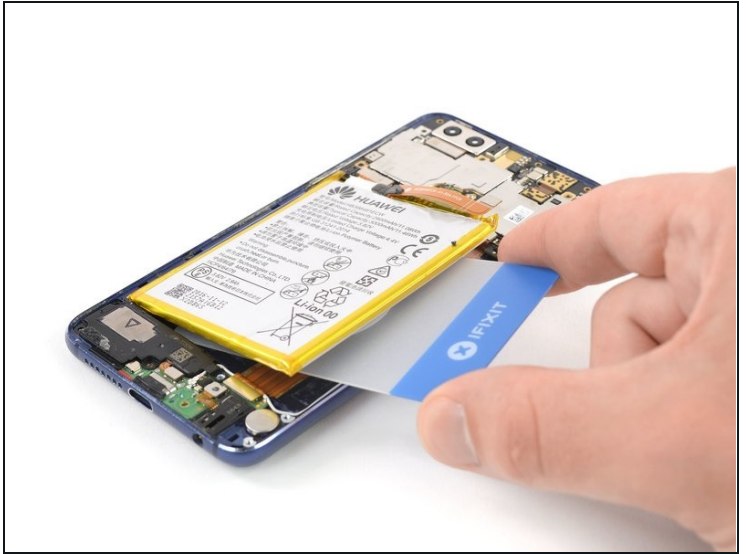
Step 19



⚠ Try to deform the battery as little as possible during the following process. Soft-shell lithium-ion batteries can leak dangerous chemicals, catch fire, or even explode if damaged. Do not use excessive force or pry at the battery with metal tools.

- Insert an opening pick or a [plastic card](#) under the battery where the adhesive strip was located.
- Slide along the right side of the battery to cut the remaining adhesive.
- Carefully pry up the right side of the battery to loosen the adhesive.

Step 20



⚠ The display flex cable and interconnect flex cable run underneath the battery. Be careful not to damage them while cutting the remaining adhesive.

- Slide a plastic card underneath the battery and cut the remaining adhesive between the flex cables and underneath the left side of the battery.

Step 21



- Remove the battery.

⚠ Do not reuse the battery after it has been removed, as doing so is a potential safety hazard. Replace it with a new battery.

- ☑ Before installing a new battery remove any remaining adhesive from the phone, and clean the glued areas with isopropyl alcohol and a lint-free cloth.

If possible, turn on your phone and test your repair before installing new adhesive and resealing the phone.

Secure the new battery with pre-cut adhesive or double-sided adhesive tape. In order to position it correctly, apply the new adhesive into the phone at the places where the old adhesive was located, not directly onto the battery. Press the new battery firmly into place.

To reassemble your device, follow these instructions in reverse order.

For optimal performance, calibrate your newly installed battery: Charge it to 100%, and keep charging it for at least two more hours. Then, use it until it shuts off due to low battery. Finally, charge it uninterrupted to 100%

Take your e-waste to an [R2 or e-Stewards certified recycler](#).

Repair didn't go as planned? Check out our [Answers community](#) for troubleshooting help.