



# Canon PowerShot SX60 HS Side Panel Replacement

This guide will teach you how to replace the side panel for the Canon PowerShot SX60 HS.

Written By: Tanmayi Ambati



---

## INTRODUCTION

If your device's side panel has been broken or damaged, use this guide to learn how to replace it.

This part of the housing is used to protect the device from elements and minor damage.

This guide is a prerequisite for some of the major components of the device.



### TOOLS:

- [iFixit Opening Tools](#) (1)
  - [Nylon Tipped Tweezers](#) (1)
  - [Phillips #00 Screwdriver](#) (1)
  - [Spudger](#) (1)
-

## Step 1 — Back Panel



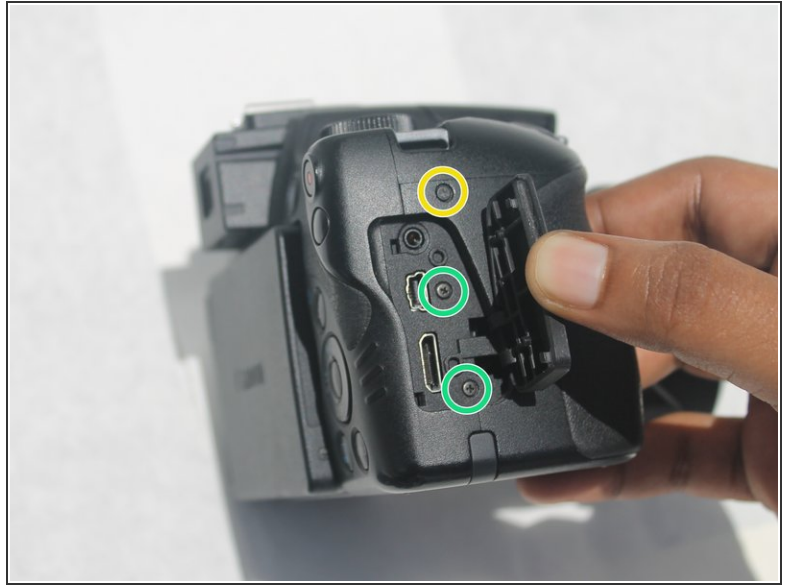
- Make sure to power off the device before completing any more steps.
- Remove the battery by releasing the orange clip in the battery compartment.

## Step 2



- Remove the rubber eye piece by pulling it back.
- Use the Phillips #00 screwdriver to remove the two 5mm #00 screws located on the side of the viewfinder.

## Step 3



- Use the Phillips #00 screwdriver to remove the 4mm #00 screw located on the bottom left of the device.
- Use the Phillips #00 screwdriver to remove the 5mm #00 screw located on the bottom center of the device.
- Use the Phillips #00 screwdriver to remove the 7mm #00 screw on the right top corner of the camera, just above the media ports.
- Use the Phillips #00 screwdriver to remove the two 5mm #00 screws located on the right side, under the media port dust cover.



## Step 4



- ⓘ Ensure the LCD screen is swung fully to the left before taking off the back panel.
  - Use the iFixit opening tool to pry off the back panel.
- ⓘ Don't completely pull off the back panel because there is still a ribbon attached.
  - Use the black spudger to unclip the ribbon located behind the battery compartment. Then remove it using the nylon tipped tweezers.
  - Once the ribbon is unplugged, remove the back panel from the camera body.

## Step 5 — Front Panel



- Remove the sunshade located on the front of the lens by twisting it 90 degrees in either direction, then pull straight off the lens.

## Step 6



- Remove the 5mm Phillips #00 screw located on the left side below the microphone connection.
- Remove the 4mm Phillips #00 screw located on the bottom left of the camera.
- Remove the 5mm Phillips #00 screw located on the bottom center of the camera.
- Pop open the flash and remove the 5mm Phillips #00 screw located under the flash.

## Step 7



- Remove the front cover by pulling along the lens housing while holding the body of the camera.

## Step 8 — Side Panel



- Remove the 4mm #00 Philips screw located on the top left corner beneath the front panel.
- Remove the 5mm #00 Philips screw located on the top left corner beneath the front panel.
- Remove the 5mm #00 Philips screw located on the top of the left side panel near the microphone connection.
- Remove the 4mm #00 Philips screw located on the bottom left corner beneath the front panel.
- Using a black spudger, unclip the orange wire ribbon on the lower left corner of the motherboard and then remove it using the nylon tipped tweezers.
- The side panel is now free and can be removed by pulling the panel to the left.

To reassemble your device, follow these instructions in reverse order.