



Jura Z7 brewing unit replacement

Jura Z7 brewing unit replacement

Written By: VauWeh



INTRODUCTION

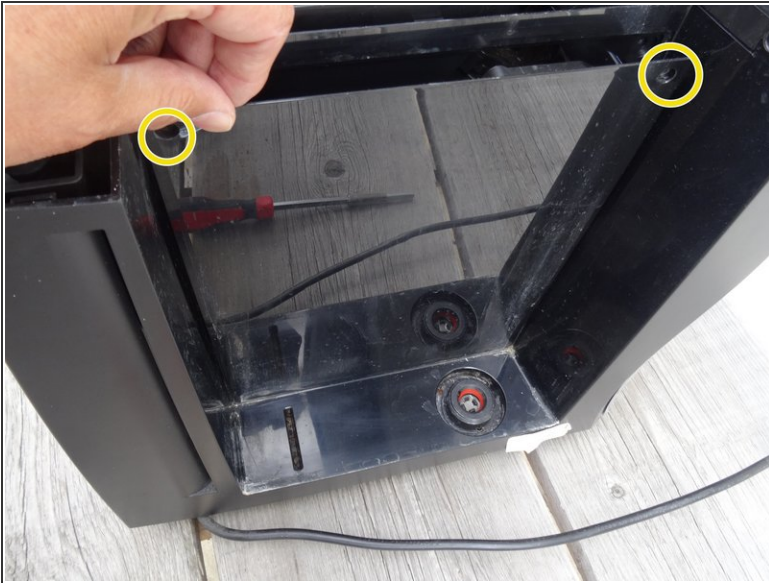
When the machine is open, replacing the brewing unit is quite easy. Actually, you just need to take out the panel under the water tank, but it's a little easier if you open the machine completely using [this guide](#).



TOOLS:

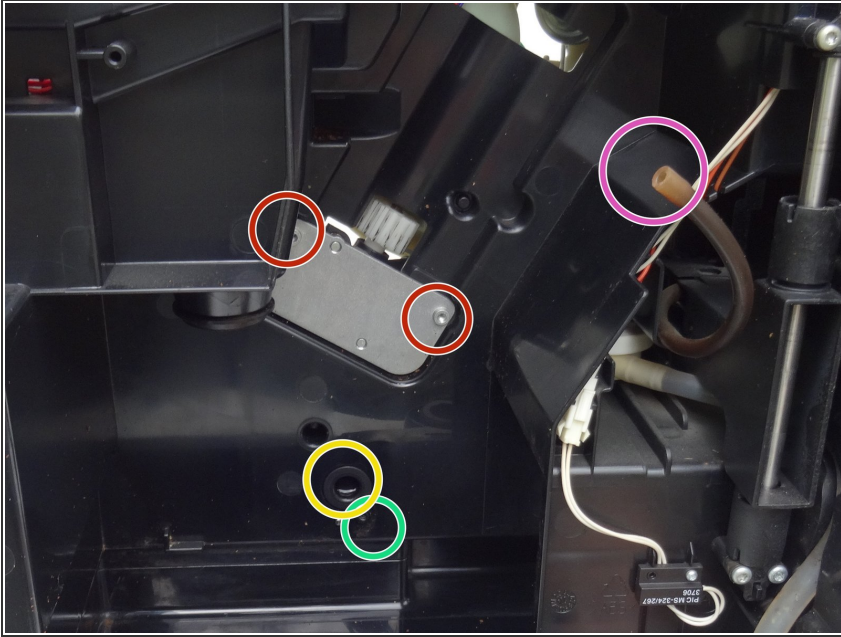
- [TR10 Torx Security Screwdriver](#) (1)
 - [T15 Torx Screwdriver](#) (1)
 - [iFixit Opening Tool](#) (1)
 - [Oval Drive Bit](#) (1)
-

Step 1 — Brewing unit



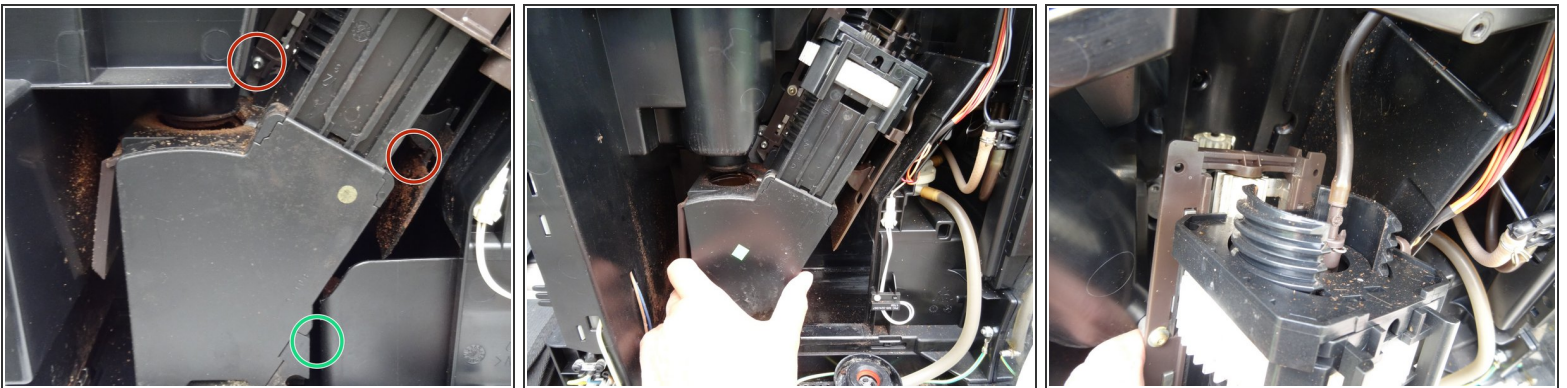
- Position the machine with the water tank side facing you.
- The panel covering the brew group is fixed at the top edge with two oval head screws.
 - ⓘ These screws have an oval head and look like rivets. They require a special tool or [bit](#) for unscrewing. Here is [a DIY guide](#) . In a pinch you can also use needle nosed pliers. Jura wants to keep us out of our own machines!
- Remove the two oval head screws and lift the panel out.
- There it is: the brewing unit.

Step 2



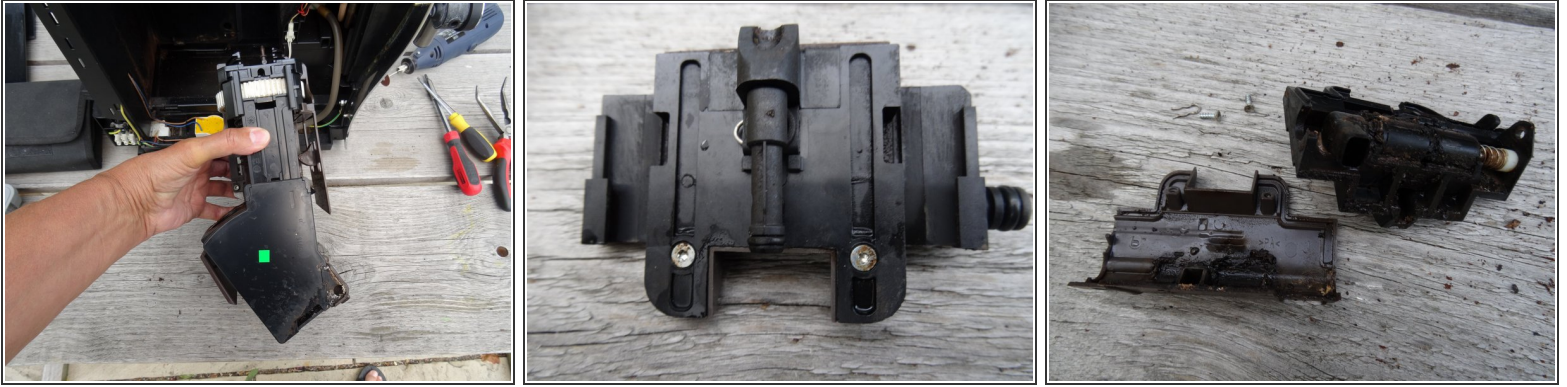
- The photo is from a Jura J5, but the brewing unit is basically the same and you can easily see how the brewing unit is attached:
- Two Torx T20 screws with fine thread
- One Torx T15 screw
- The hot water inlet is plugged in.
- The hose with the coffee spout is plugged on top.

Step 3



- Unscrew the two Torx T15 machine screws.
- Unscrew the Torx T15 screw at the bottom of the hot water inlet.
- Pull the brewing unit out to you. The hose to the coffee spout is still attached at the top.
- Pull off the hose to the coffee spout.

Step 4



- Start now with the replacement or revision of the brewing unit.
- If you want to disassemble the brewing unit for cleaning and installing new seals, follow [this](#) or [this](#) guides.
- There is one small difference with this brewing group: the drainage valve is fitted with a cover, but this is easy to remove. Unscrew the two Torx T8 screws.
- Use [these instructions](#) to overhaul the drainage valve.

Work through the steps in reverse order to reassemble your device.