



Opening the Jura Z series housing

This will show how to disassemble the case for...

Written By: VauWeh



INTRODUCTION

This will show how to disassemble the case for the Jura Z7. This step will be necessary for most repairs.

TOOLS:

- [TR10 Torx Security Screwdriver](#) (1)
 - [Oval Drive Bit](#) (1)
 - [iFixit Opening Tool](#) (1)
-

Step 1 — Opening the Jura Z series housing



⚠️ Unplug the machine from the power outlet

- Remove all attachments: water tank, drip tray, aroma lid

Step 2



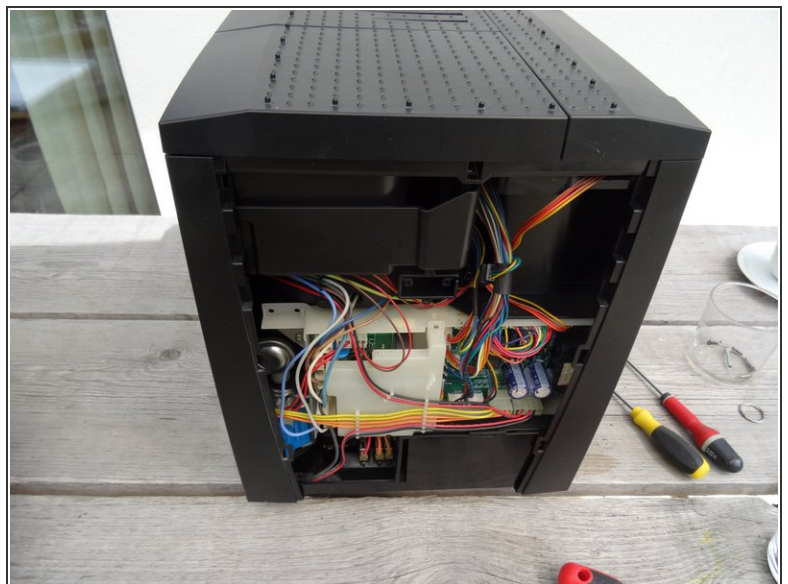
- Turn the machine so the back is facing toward the front.
- The Jura sign must be removed. Turn it a few millimeters counterclockwise.
- ⓘ If this becomes difficult use a suction cup to assist.
- Remove the Jura sign.

Step 3



- Behind the Jura sign are two screws with an oval head. They have to be removed.
- These screws have an oval head that makes them look like rivets (picture 2). You need to use a special bit for their removal. If the right bit is not available, it could be done with a pair of needle nose pliers. Jura wants to keep us out of our own machines!!!!

Step 4



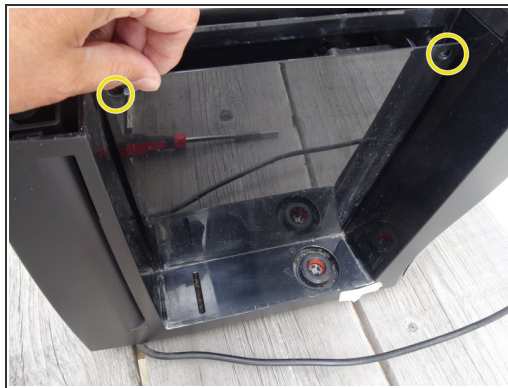
- Push the back down a bit and then remove it.

Step 5



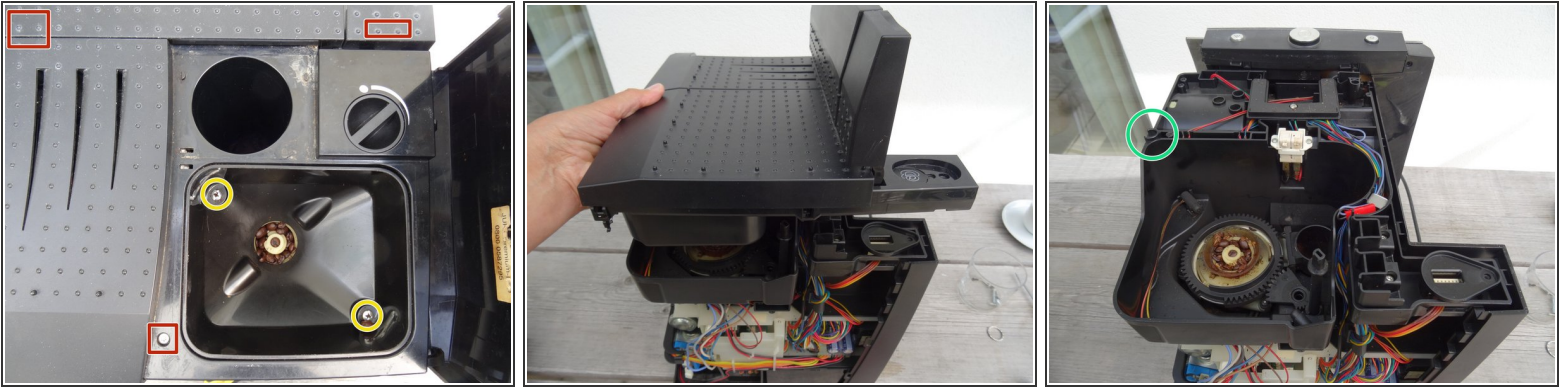
- Pull the right side panel- as seen looking to the frontpanel - backwards and take it off.
- ⓘ Sometimes it gets a bit stuck and may require a bit more of a pull.



Step 6



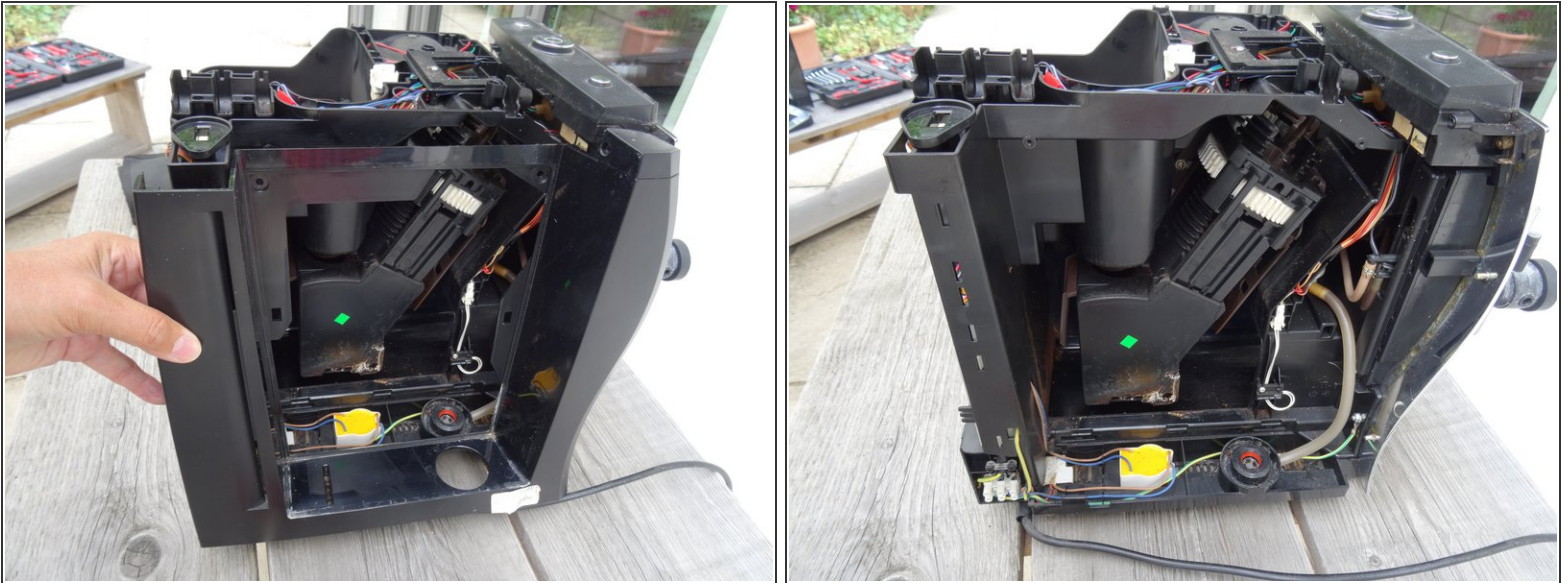
- ⓘ In this step, you should remove the screws of the left side panel. The side panel can only be removed after removing the top cover.
- Remove the Torx T15 screw on the front wall of the side panel.
- In the side part there is a lid over the brew group. The lid is fastened at the top with two oval head screws. Remove those to remove the lid.
- With the cover removed the brew group becomes visible

Step 7



- This step shows how to remove the top cover
 - Remove the powder tray and all coffee beans.
 - The cover is fastened with three Torx T15 screws. Those are easily visible under the covers as well as the small cover on the left back side.
 - Remove the two Phillips screws on the bean container and remove the bean container.
 - Lift the cover upwards.
-  If it is stuck, use a plastic opening tool to carefully pry it open.
-  The lid of the bean container is held in place by a small, strong magnet that loosely rests. It is either in the green marked recess, or it remains hanging on the bean container. Make sure it is not lost!

Step 8



- Pull the left side panel backwards to take it off.
- ⓘ For some repairs it is not necessary to remove the left side panel.

Repeat the steps in reverse order to reassemble your device.