



Canon PowerShot SX60 HS Flash Replacement

If the flash isn't working on your Canon...

Written By: Ethan Boone



INTRODUCTION

If the flash isn't working on your Canon PowerShot SX60 HS then use this guide to replace the flash assembly.

The flash on this device is used to help the user take pictures in low-light conditions.

Ensure that the settings are correct for the flash to work on your device. For more clarifying information review our [troubleshooting guide](#).

Before starting this guide, ensure that your device is powered off completely.

TOOLS:

[iFixit Opening Tool](#) (1)

[Nylon Tipped Tweezers](#) (1)

[Phillips #00 Screwdriver](#) (1)

[Spudger](#) (1)

Step 1 — Back Panel



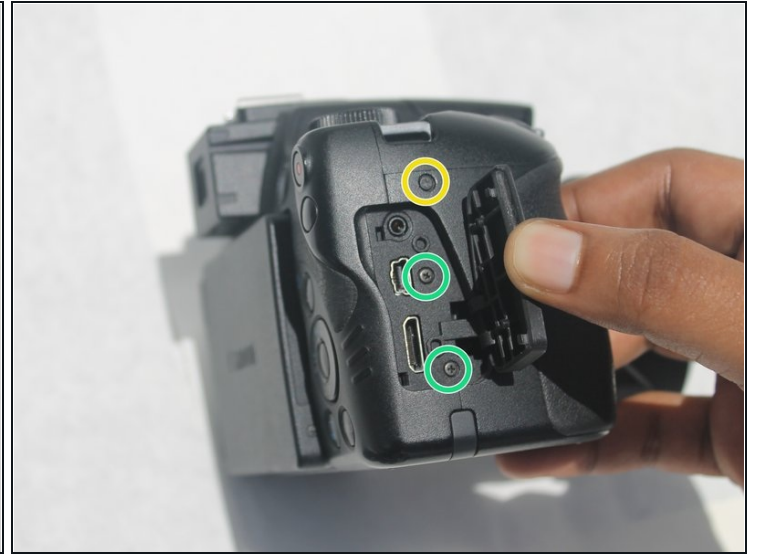
- Make sure to power off the device before completing any more steps.
- Remove the battery by releasing the orange clip in the battery compartment.

Step 2



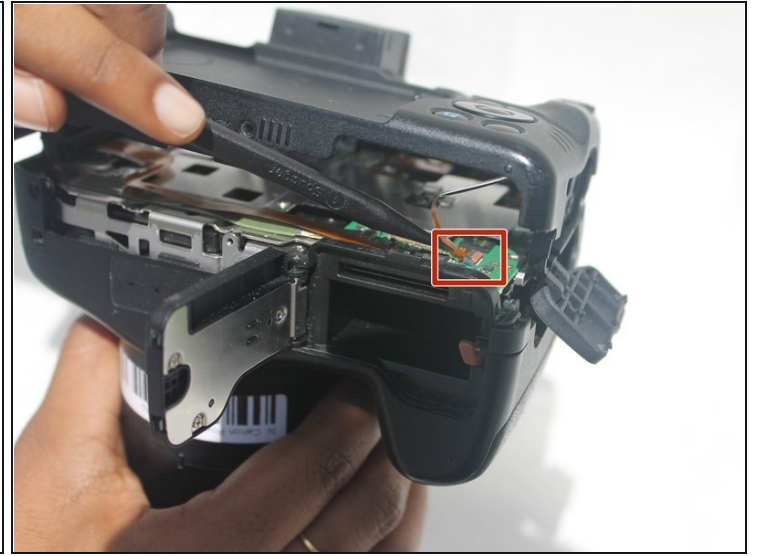
- Remove the rubber eye piece by pulling it back.
- Use the Phillips #00 screwdriver to remove the two 5mm #00 screws located on the side of the viewfinder.

Step 3



- Use the Phillips #00 screwdriver to remove the 4mm #00 screw located on the bottom left of the device.
- Use the Phillips #00 screwdriver to remove the 5mm #00 screw located on the bottom center of the device.
- Use the Phillips #00 screwdriver to remove the 7mm #00 screw on the right top corner of the camera, just above the media ports.
- Use the Phillips #00 screwdriver to remove the two 5mm #00 screws located on the right side, under the media port dust cover.

Step 4



- ① Ensure the LCD screen is swung fully to the left before taking off the back panel.
- Use the iFixit opening tool to pry off the back panel.
- ① Don't completely pull off the back panel because there is still a ribbon attached.
- Use the black spudger to unclip the ribbon located behind the battery compartment. Then remove it using the nylon tipped [tweezers](#).
- Once the ribbon is unplugged, remove the back panel from the camera body.

Step 5 — Front Panel



- Remove the sunshade located on the front of the lens by twisting it 90 degrees in either direction, then pull straight off the lens.

Step 6



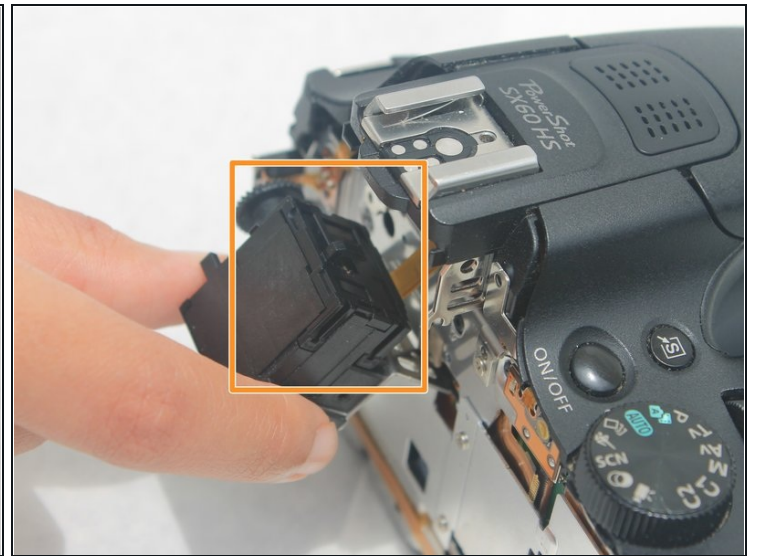
- Remove the 5mm Phillips #00 screw located on the left side below the microphone connection.
- Remove the 4mm Phillips #00 screw located on the bottom left of the camera.
- Remove the 5mm Phillips #00 screw located on the bottom center of the camera.
- Pop open the flash and remove the 5mm Phillips #00 screw located under the flash.

Step 7



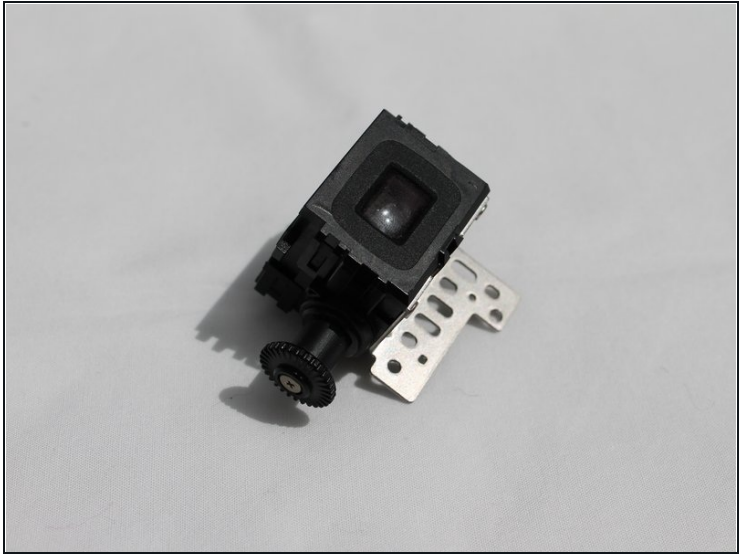
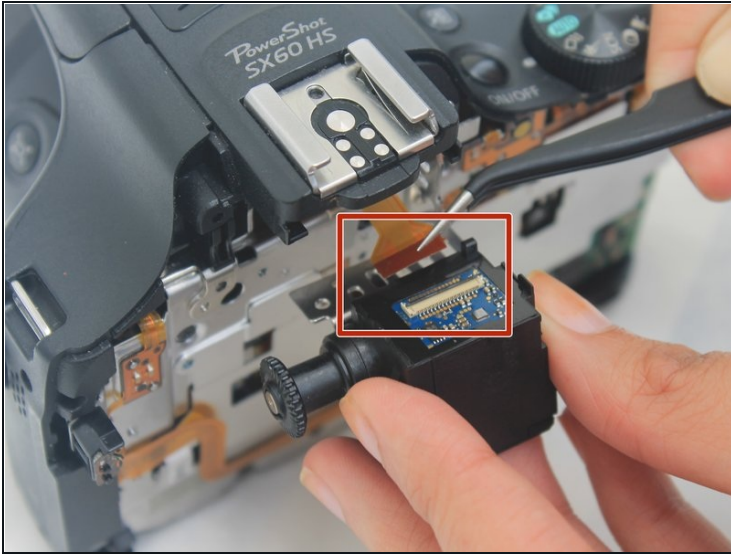
- Remove the front cover by pulling along the lens housing while holding the body of the camera.

Step 8 — Viewfinder



- Use the Phillips #00 screwdriver to remove the two 2mm #00 silver screws located under the viewfinder.
- ⓘ Don't pull the viewfinder all the way out because there is still a wire ribbon attached.
- Remove the plastic housing around the viewfinder by using a black spudger or opening tool to unclip the 3 plastic clips on the sides of the viewfinder.

Step 9



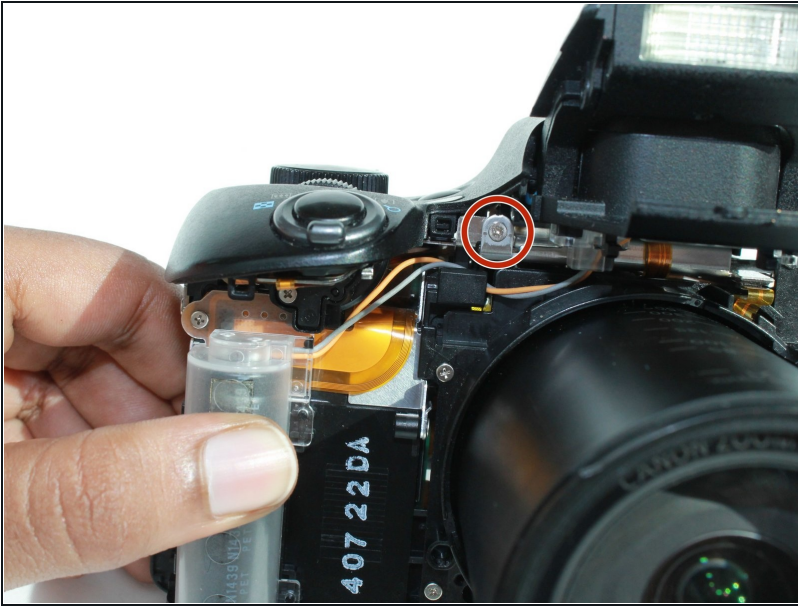
- Unclip the ribbon from the ZIF connector on the viewfinder.
- Pull out the viewfinder.

Step 10 — Side Panel



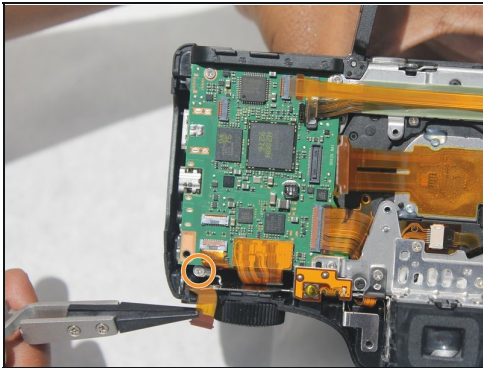
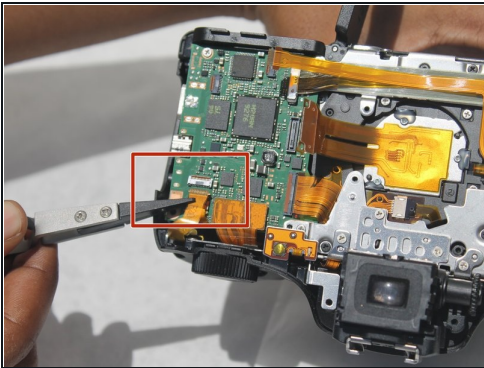
- Remove the 4mm #00 Philips screw located on the top left corner beneath the front panel.
- Remove the 5mm #00 Philips screw located on the top left corner beneath the front panel.
- Remove the 5mm #00 Philips screw located on the top of the left side panel near the microphone connection.
- Remove the 4mm #00 Philips screw located on the bottom left corner beneath the front panel.
- Using a black spudger, unclip the orange wire ribbon on the lower left corner of the motherboard and then remove it using the nylon tipped [tweezers](#).
- The side panel is now free and can be removed by pulling the panel to the left.

Step 11 — Top Cover



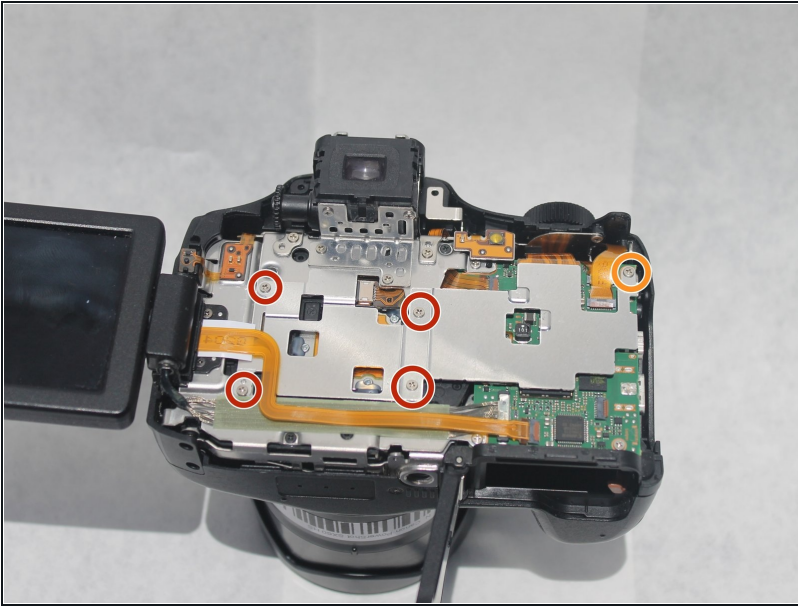
- Remove one silver 2mm #00 Philips screw on the front side located next the flash assembly.

Step 12



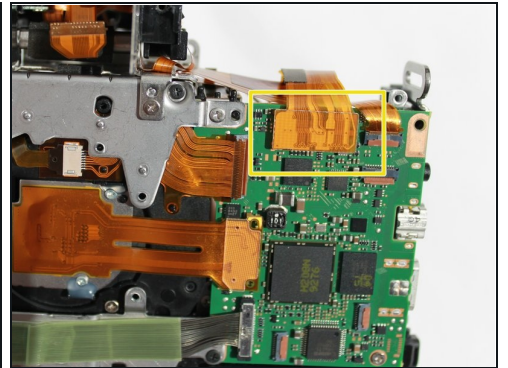
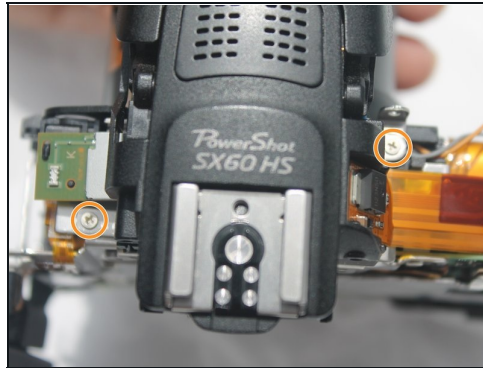
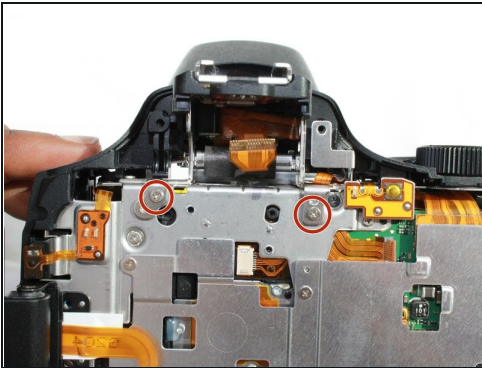
- Use the black spudger to unclip the ribbon on the top right corner and then remove it using the nylon tipped [tweezers](#).
- Remove one silver 2mm #00 Philips screw found underneath the ribbon.
- Once the screw is removed, the top panel is completely detached from the device. To remove it, grab it by hand and gently pull it off the device.

Step 13 — Flash



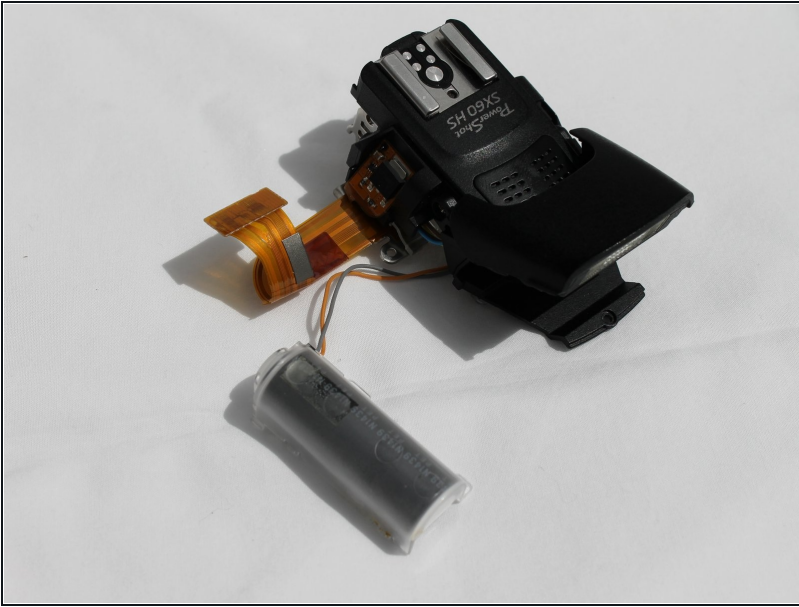
- Remove the four 2mm #00 Phillips head screws from the metal back plate.
- Remove the 4mm #00 Phillips head screw from the top corner of the metal back plate.

Step 14



- Remove two silver 2mm #00 Phillips head screws located near the top of the back panel.
- Remove the two silver 2mm #00 Phillips head screws on the top side.
- Use the black spudger to unclip the ribbon on the top right corner and remove it.

Step 15



- Once the above steps are completed, gently pull the flash assembly from the device and snap out the capacitor located on the front side of the camera

To reassemble your device, follow these instructions in reverse order.