



Canon PowerShot SX60 HS Motherboard and Lens Motor Replacement

This guide will teach you how to replace the motherboard and lens assembly for the Canon PowerShot SX60 HS.

Written By: Ethan Boone



INTRODUCTION

This guide will walk you through the necessary steps to replace either the motherboard or lens assembly from your Canon PowerShot SX60 HS.

The motherboard controls all aspects of the device and its operation. The lens assembly houses all the optics used to capture images.

Before starting this guide make sure to consult our [troubleshooting page](#) to ensure that this repair is necessary for your device.

This guide essentially requires you to completely disassemble the device, so there are lots of ribbons, electronics and optics that could break potentially damaging your device further.

Make sure to completely power off the device before starting this repair.



TOOLS:

- [Phillips #00 Screwdriver](#) (1)
 - [iFixit Opening Tools](#) (1)
 - [Spudger](#) (1)
 - [Nylon Tipped Tweezers](#) (1)
-

Step 1 — Back Panel



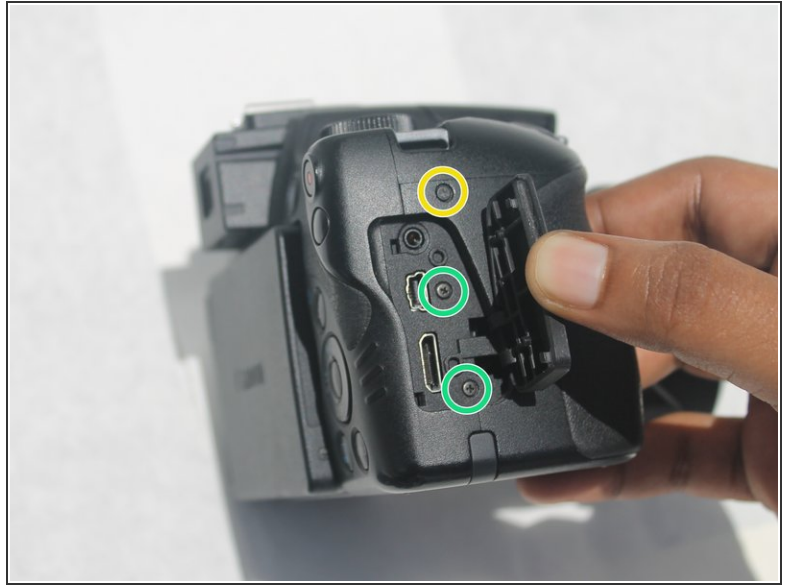
- Make sure to power off the device before completing any more steps.
- Remove the battery by releasing the orange clip in the battery compartment.

Step 2



- Remove the rubber eye piece by pulling it back.
- Use the Phillips #00 screwdriver to remove the two 5mm #00 screws located on the side of the viewfinder.

Step 3



- Use the Phillips #00 screwdriver to remove the 4mm #00 screw located on the bottom left of the device.
- Use the Phillips #00 screwdriver to remove the 5mm #00 screw located on the bottom center of the device.
- Use the Phillips #00 screwdriver to remove the 7mm #00 screw on the right top corner of the camera, just above the media ports.
- Use the Phillips #00 screwdriver to remove the two 5mm #00 screws located on the right side, under the media port dust cover.

Step 4



- ⓘ Ensure the LCD screen is swung fully to the left before taking off the back panel.
 - Use the iFixit opening tool to pry off the back panel.
- ⓘ Don't completely pull off the back panel because there is still a ribbon attached.
 - Use the black spudger to unclip the ribbon located behind the battery compartment. Then remove it using the nylon tipped tweezers.
 - Once the ribbon is unplugged, remove the back panel from the camera body.

Step 5 — Front Panel



- Remove the sunshade located on the front of the lens by twisting it 90 degrees in either direction, then pull straight off the lens.

Step 6



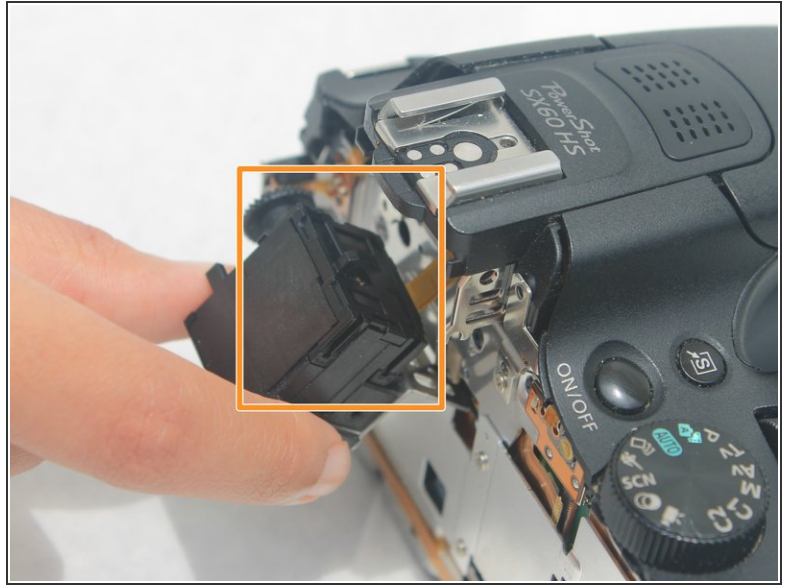
- Remove the 5mm Phillips #00 screw located on the left side below the microphone connection.
- Remove the 4mm Phillips #00 screw located on the bottom left of the camera.
- Remove the 5mm Phillips #00 screw located on the bottom center of the camera.
- Pop open the flash and remove the 5mm Phillips #00 screw located under the flash.

Step 7



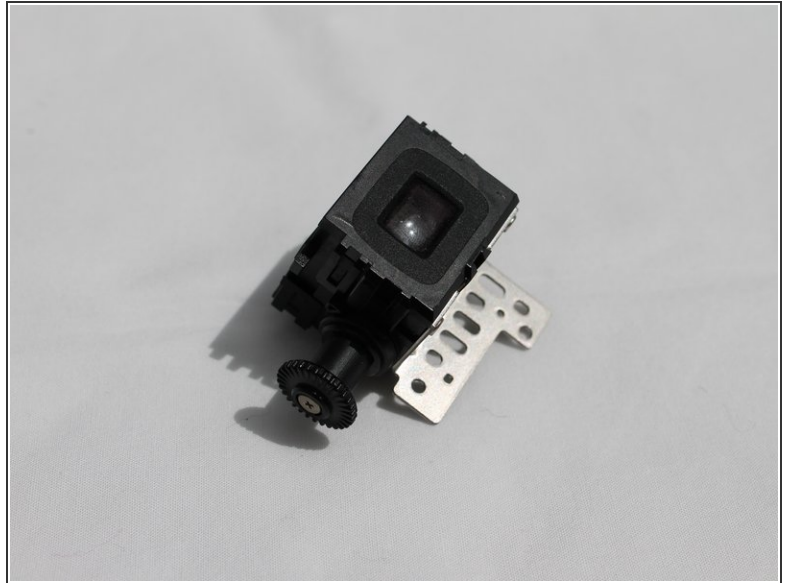
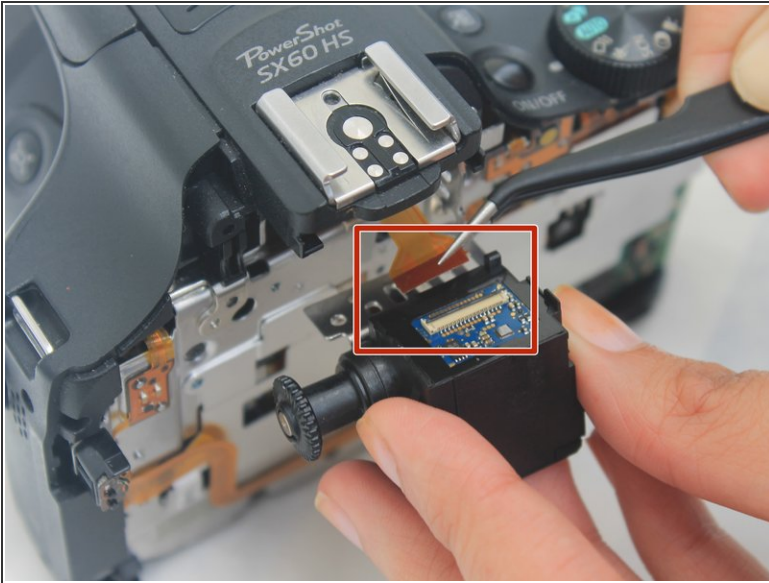
- Remove the front cover by pulling along the lens housing while holding the body of the camera.

Step 8 — Viewfinder



- Use the Phillips #00 screwdriver to remove the two 2mm #00 silver screws located under the viewfinder.
- ⓘ Don't pull the viewfinder all the way out because there is still a wire ribbon attached.
- Remove the plastic housing around the viewfinder by using a black spudger or opening tool to unclip the 3 plastic clips on the sides of the viewfinder.

Step 9



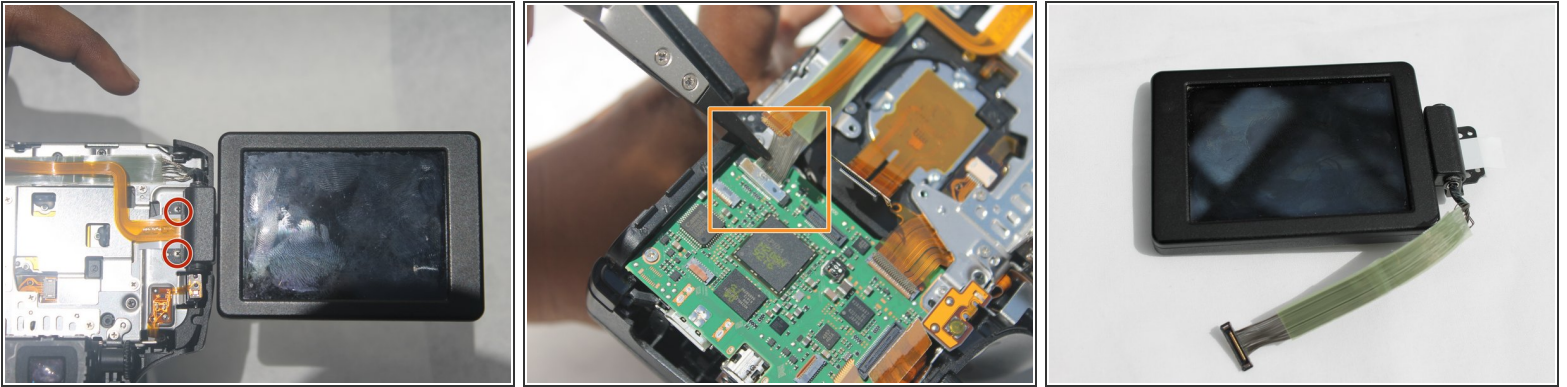
- Unclip the ribbon from the ZIF connector on the viewfinder.
- Pull out the viewfinder.

Step 10 — Side Panel



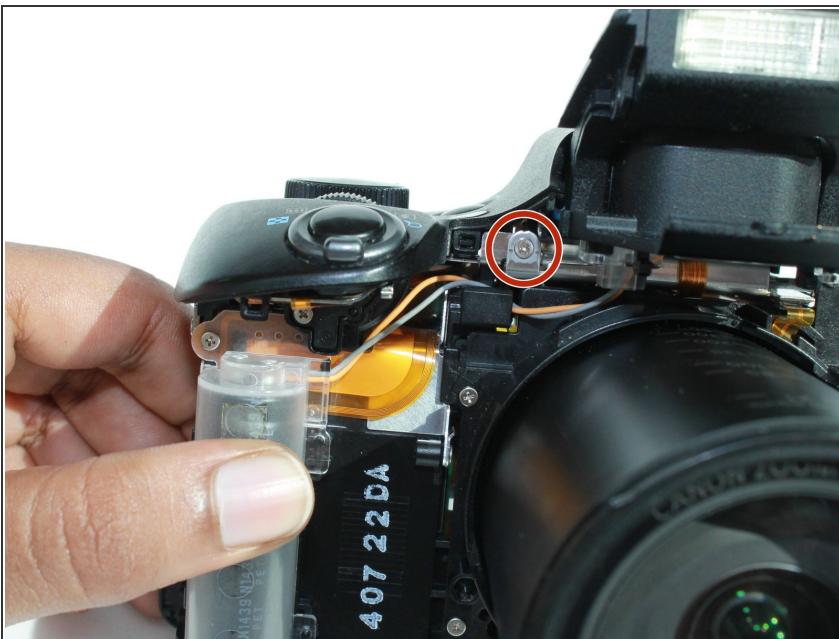
- Remove the 4mm #00 Philips screw located on the top left corner beneath the front panel.
- Remove the 5mm #00 Philips screw located on the top left corner beneath the front panel.
- Remove the 5mm #00 Philips screw located on the top of the left side panel near the microphone connection.
- Remove the 4mm #00 Philips screw located on the bottom left corner beneath the front panel.
- Using a black spudger, unclip the orange wire ribbon on the lower left corner of the motherboard and then remove it using the nylon tipped tweezers.
- The side panel is now free and can be removed by pulling the panel to the left.

Step 11 — LCD Screen



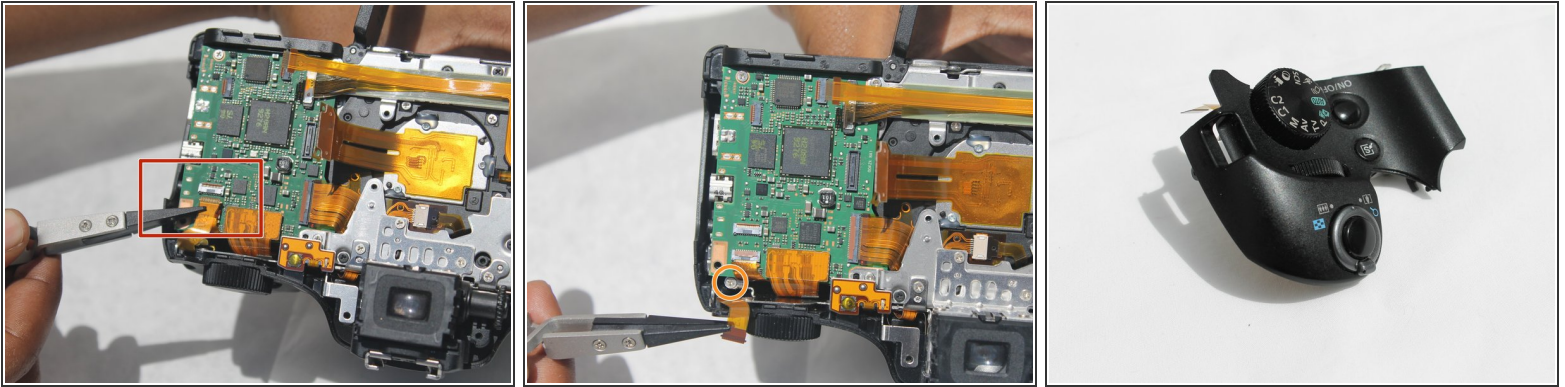
- Remove two 4mm #00 Philips screws located at the hinge of the LCD Screen.
- Unclip the green ribbon using the nylon tipped tweezers.
- ⚠ Be careful when removing this plug. The wires in the green ribbon are not connected together and can easily be damaged.
- Once the ribbon is unclipped, remove the LCD screen.

Step 12 — Top Cover



- Remove one silver 2mm #00 Philips screw on the front side located next the flash assembly.

Step 13



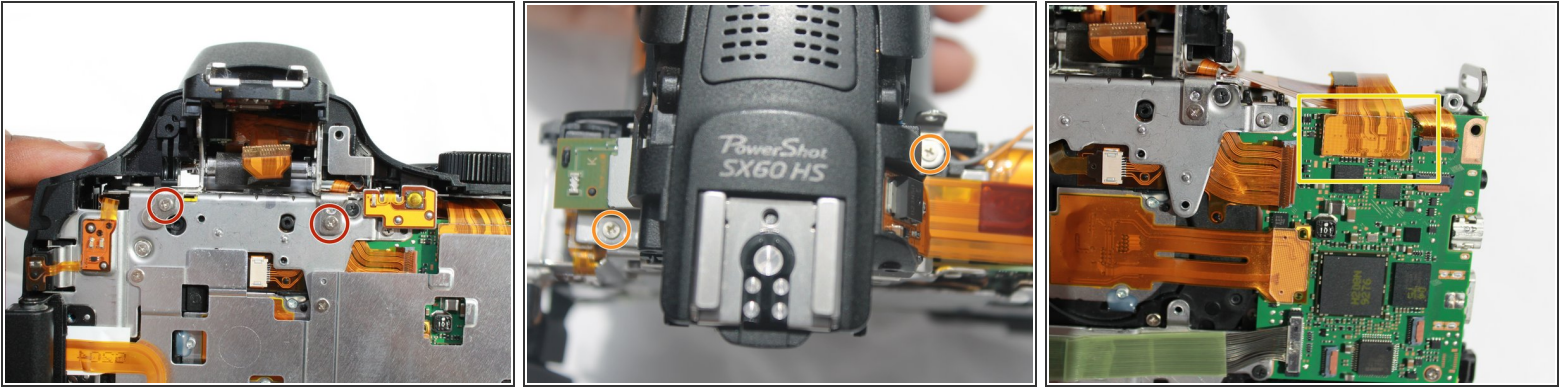
- Use the black spudger to unclip the ribbon on the top right corner and then remove it using the nylon tipped tweezers.
- Remove one silver 2mm #00 Phillips screw found underneath the ribbon.
- Once the screw is removed, the top panel is completely detached from the device. To remove it, grab it by hand and gently pull it off the device.

Step 14 — Flash



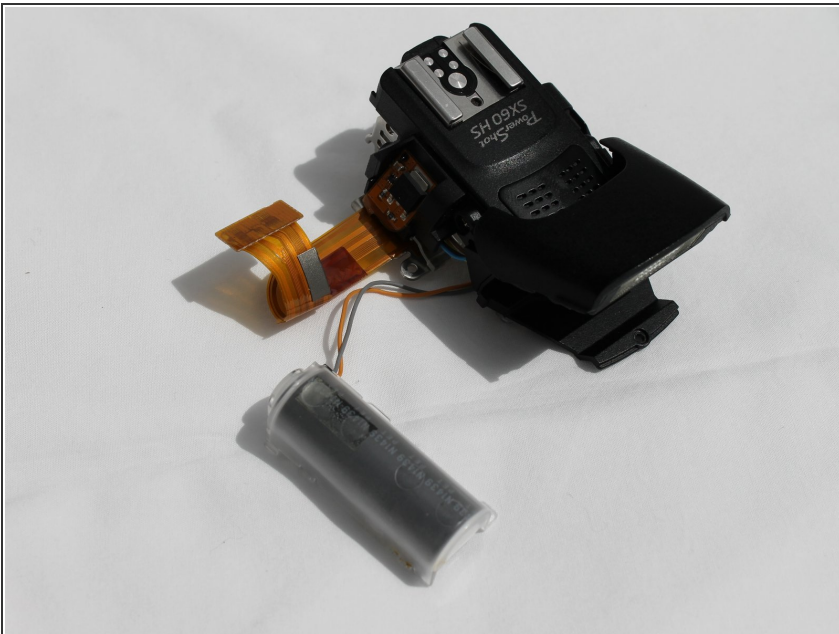
- Remove the four 2mm #00 Phillips head screws from the metal back plate.
- Remove the 4mm #00 Phillips head screw from the top corner of the metal back plate.

Step 15



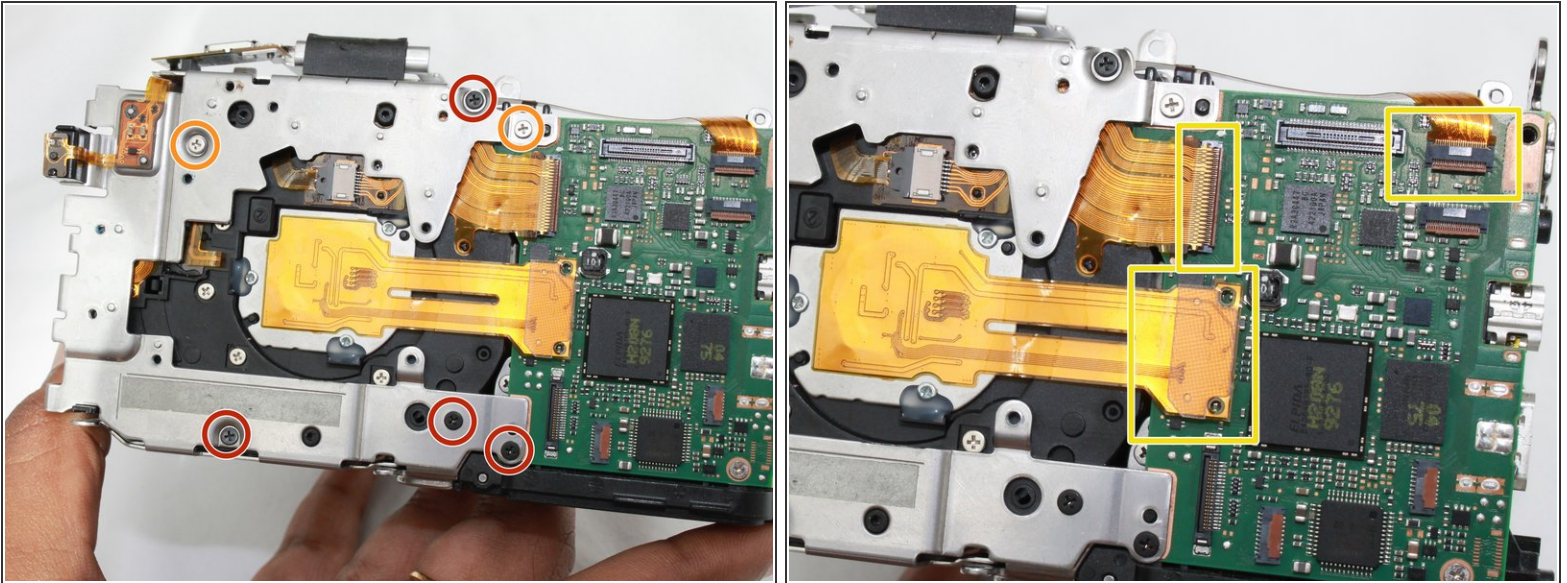
- Remove two silver 2mm #00 Phillips head screws located near the top of the back panel.
- Remove the two silver 2mm #00 Phillips head screws on the top side.
- Use the black spudger to unclip the ribbon on the top right corner and remove it.

Step 16



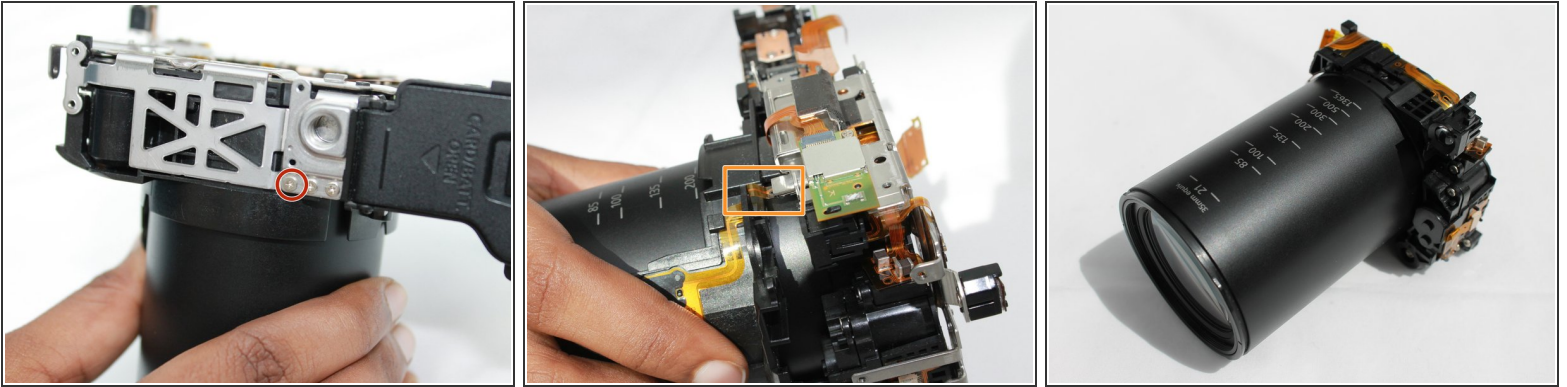
- Once the above steps are completed, gently pull the flash assembly from the device and snap out the capacitor located on the front side of the camera

Step 17 — Motherboard and Lens Motor



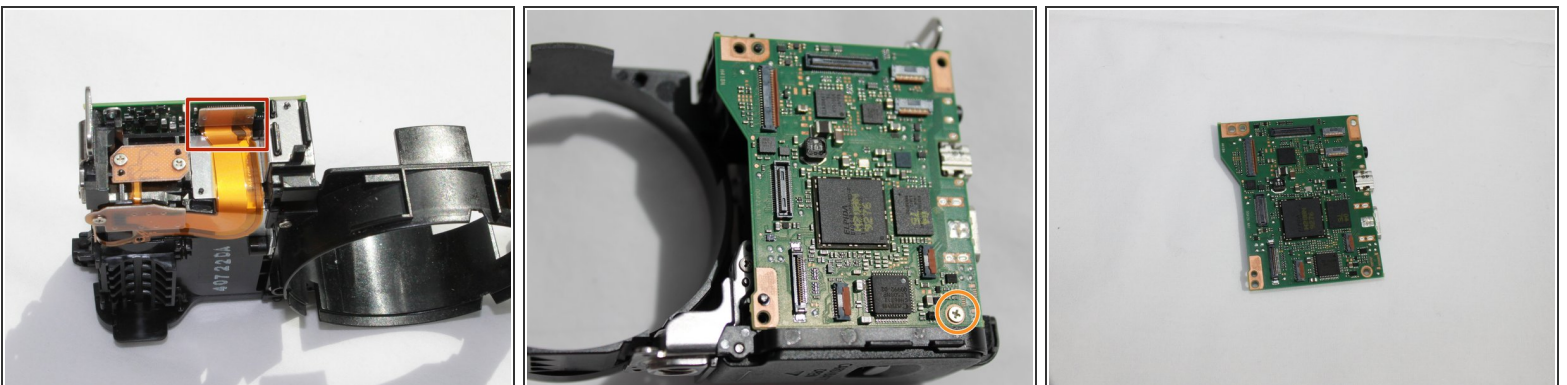
- Remove the four black 3.5mm #00 Phillips head screws holding the lens motor and motherboard to the metal back plate.
- Remove the two silver 4mm #00 Phillips head screws holding the lens motor and motherboard to the metal back plate.
- Use the black spudger to remove the 3 wire ribbon connections on the motherboard.

Step 18



- Remove one 2mm #00 Philips head screw from the bottom of the camera frame. This will free the lens and motherboard from the frame.
- ⚠ Be careful not to completely remove the metal frame, there is still a small wire ribbon attached.
- Gently separate the metal frame from the lens assembly just enough to reach the wire ribbon on the front side of the camera.
- Use the rubber tipped tweezers to unplug the wire ribbon.
- Remove the metal frame and slide the lens motor assembly out of the plastic frame.

Step 19



- Use the black spudger to remove the last remaining wire ribbon plug on the motherboard, located on the side facing the plastic frame.
- Remove the 2mm #00 Phillips head screw on the lower left corner of the motherboard. The motherboard should now lift free from the plastic frame.

This document was generated on 2020-11-28 07:32:30 AM (MST).

To reassemble your device, follow these instructions in reverse order.