



iPad Mini CDMA Small Metal Bracket Replacement

Prereq for removing logic board with no battery.

Written By: Walter Galan



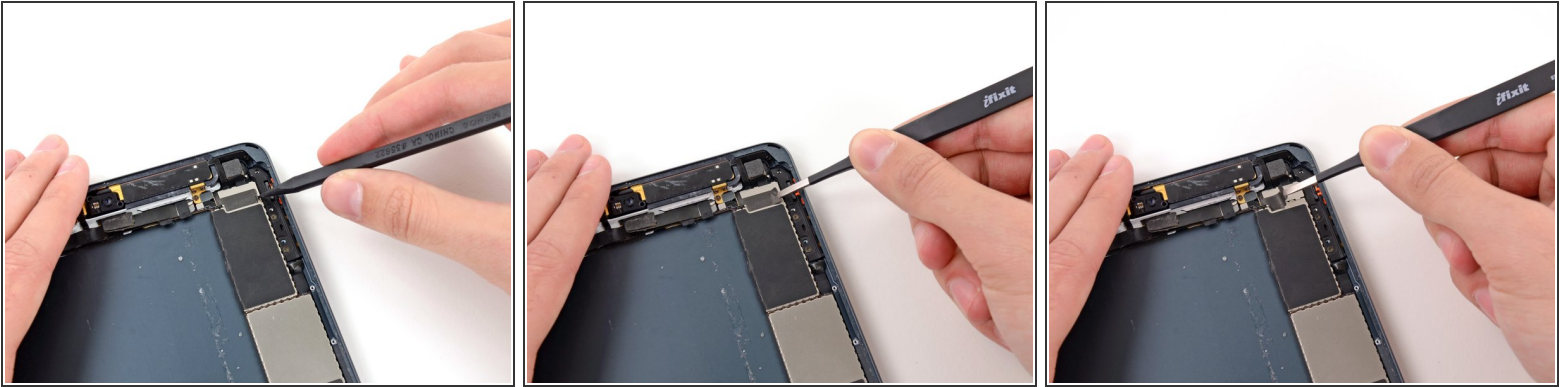
INTRODUCTION

Prereq for removing logic board with no battery.

TOOLS:

- [iFixit Opening Tools](#) (1)
 - [Tweezers](#) (1)
 - [Spudger](#) (1)
-

Step 1 — Small Metal Bracket



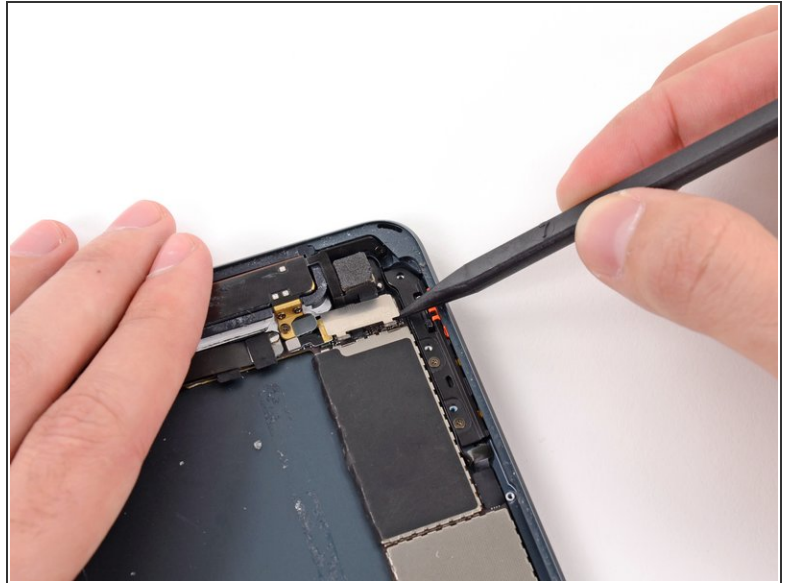
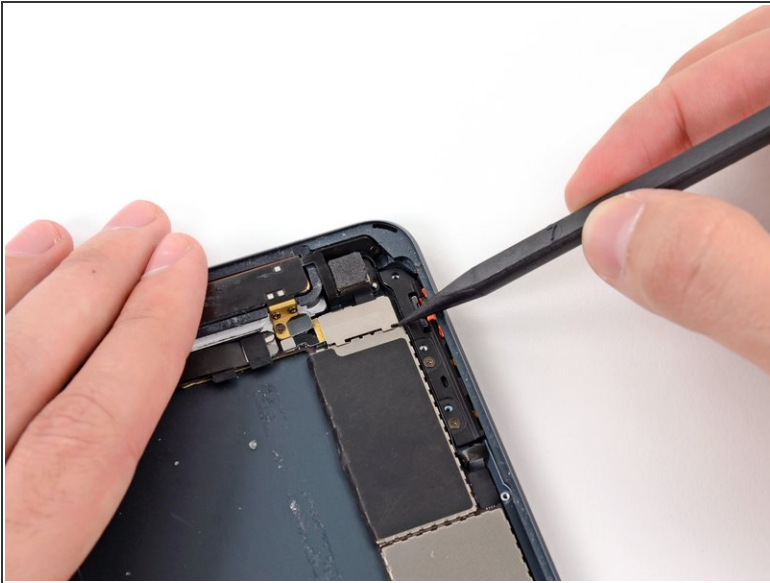
- Use the tip of a spudger to start peeling up the right side of the black tape covering the small metal bracket.
- Use tweezers to peel the tape up the rest of the way, and remove it from the bracket.

Step 2



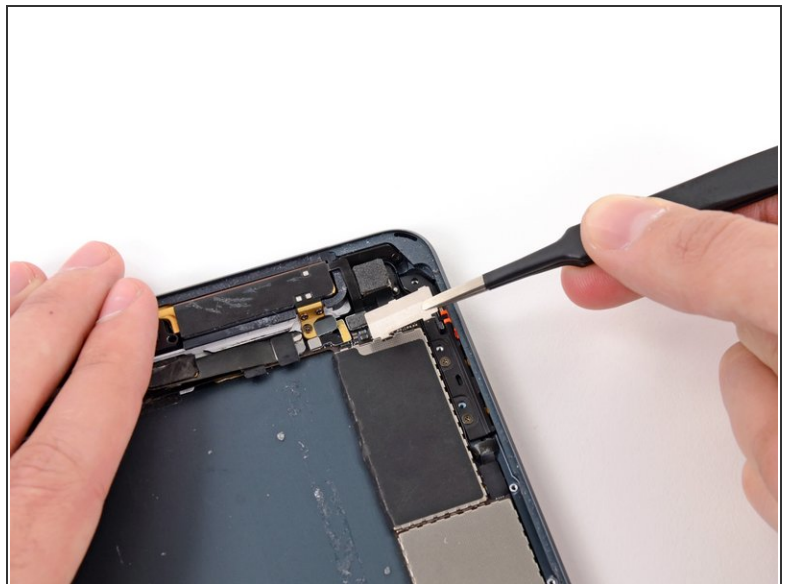
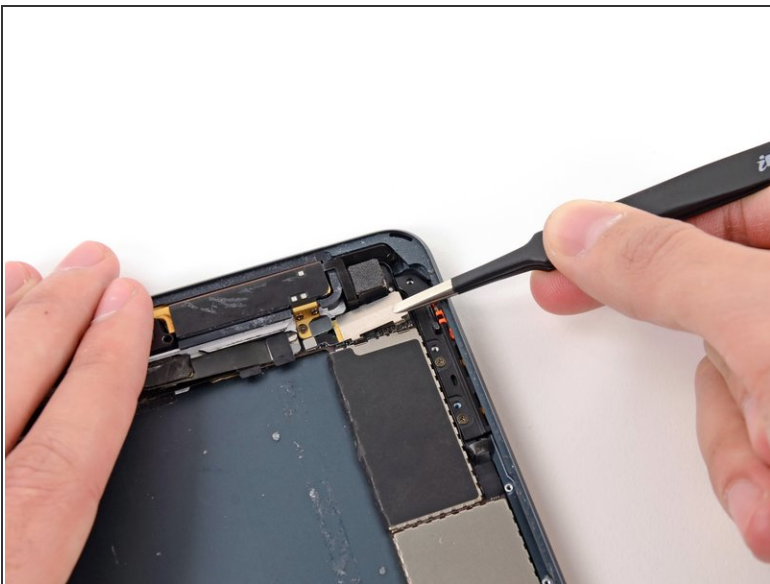
- Use a plastic opening tool to push the bracket slightly to the left.

Step 3



- Use a spudger tip to lift up the lower side of the bracket.

Step 4



- Remove the bracket with tweezers.
- ☑ During reassembly, hook the top edge of the plate in place first, then lower the bottom into its slots.

To reassemble your device, follow these instructions in reverse order.