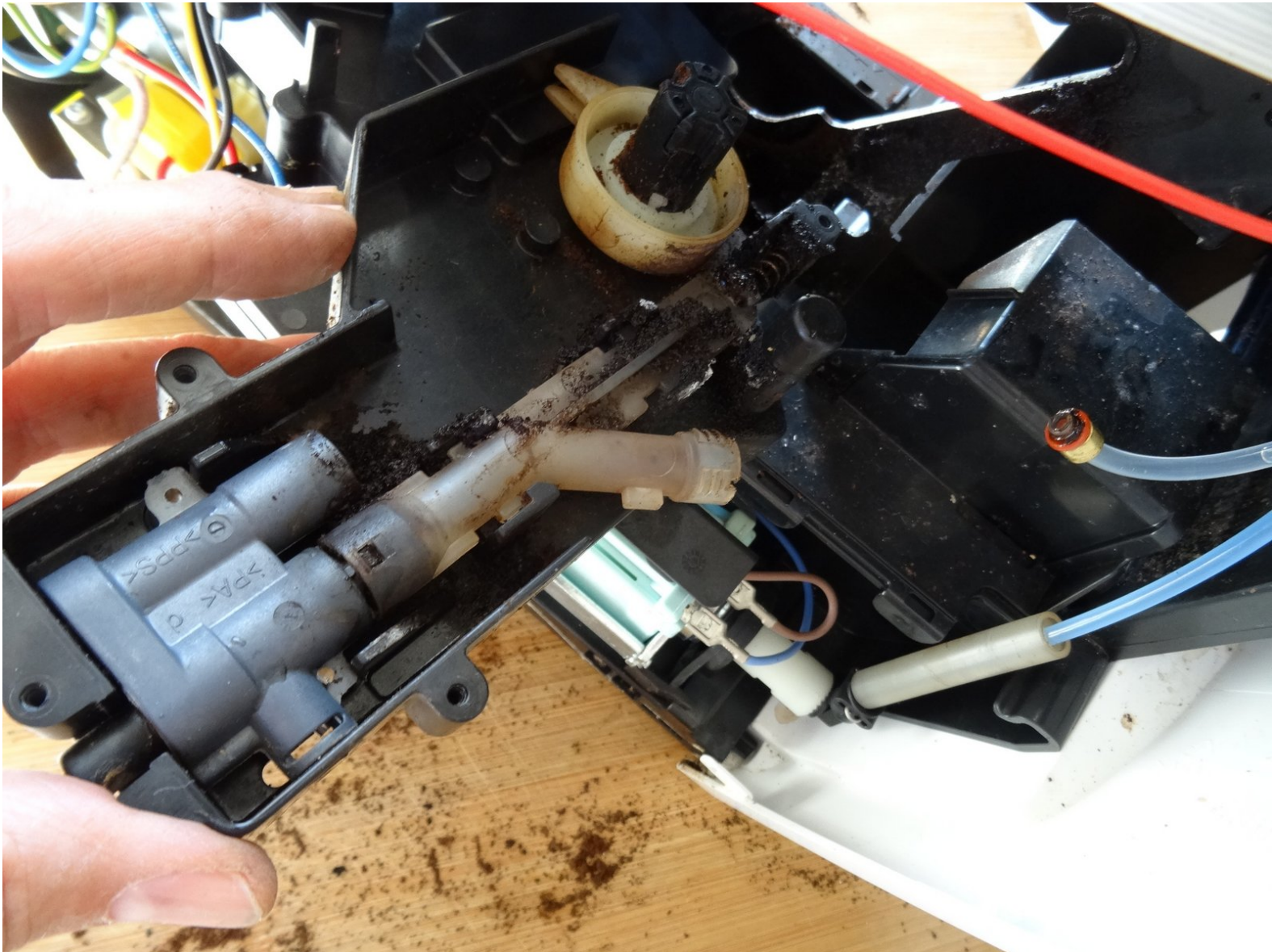




# Replacing the Melitta Caffeo Solo drainage valve

Drainage valve for Melitta Caffeo Solo replacement

Written By: VauWeh



# INTRODUCTION

These instructions will show you how to replace the drainage valve.

Please note: Some pictures are taken from the almost identical Siemens Surpreso Compact. Little visible differences are of no importance.



## TOOLS:

- [New Item](#) (1)
- [T10 Torx Screwdriver](#) (1)




## PARTS:

- [New Item](#) (1)

## Step 1 — Open the Melitta Caffeo Solo



 Pull out the power cord!

- Remove the water tank and drainage tray.
- Remove the side cover and remove the brewing unit.
- Remove all coffee beans.

## Step 2



- Unscrew and remove six Torx T10 on the rear.
- Lever the rear cover off. It will most likely be quite stuck and you will need to apply some force. You must use plastic lever tools to prevent damaging the cover.

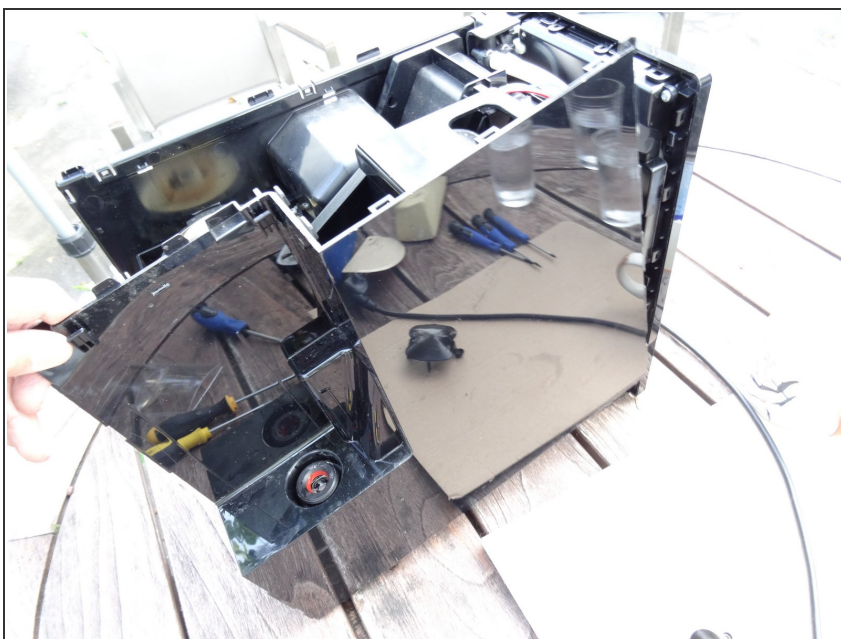


## Step 3



- Press carefully into the slits on the sides using a minus screwdriver or a flat metal spatula, to release the clasps on the upper surface. These may be well tight and you have to use some force.
- You should have created a separation between the upper surface and side panels. Now lever the upper covering away using a plastic tool. This may be quite stuck and you may apply some force.

## Step 4



- Place a plastic tool in the crack between front panel and left side panel and widen it. Then push the side panel to the back. The side panel will be quite stuck and you may apply some force to do this.
- Remove the hose from the water tank to the pump.
- Remove the side panel.

## Step 5



- Place a plastic tool into the crack between the front panel and the right side panel and widen it. Then push the side panel to the back. This may be quite stuck and you may need to apply some force.
- Remove the side panel.

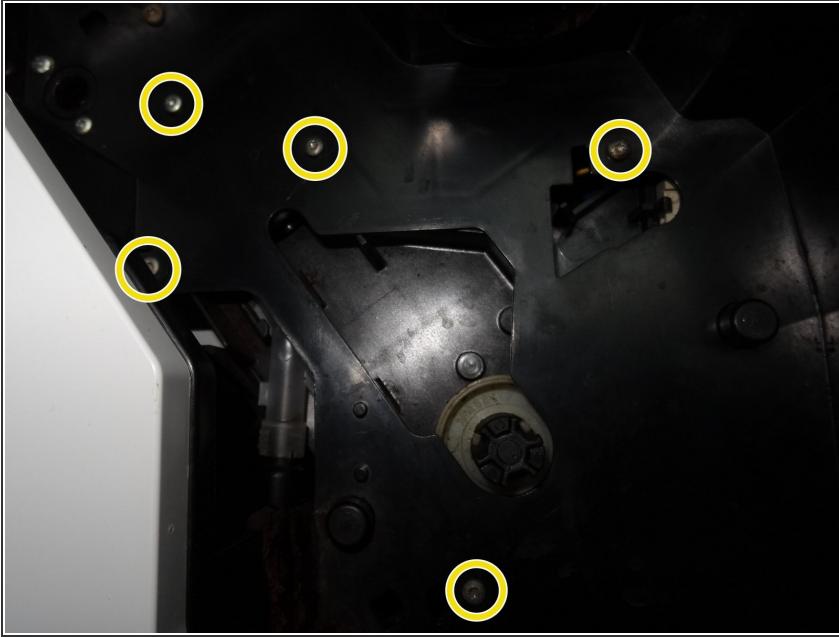
## Step 6 — Gear Drive



- Rotate clockwise the expansion box about 60 degrees and pull it out.
- i** The expansion box is frequently filled with coffee oils or grounds. Clean it from time to time. It can easily be separated into two halves.

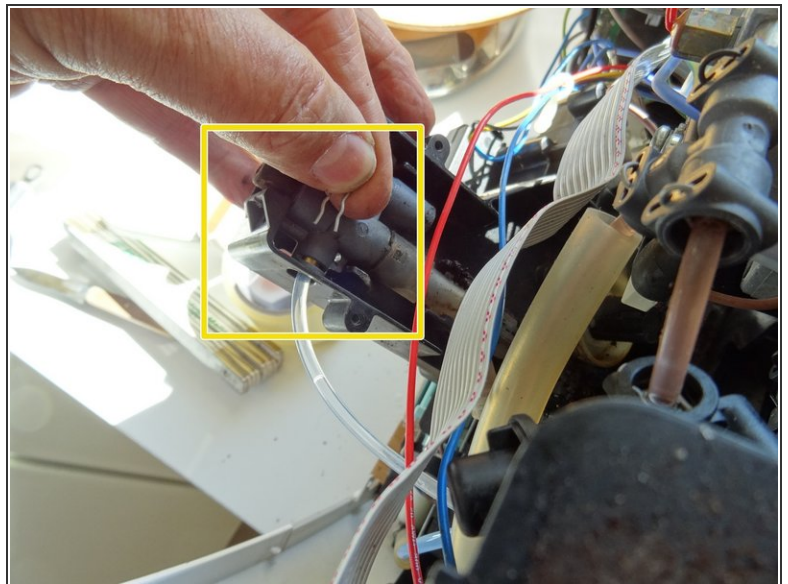
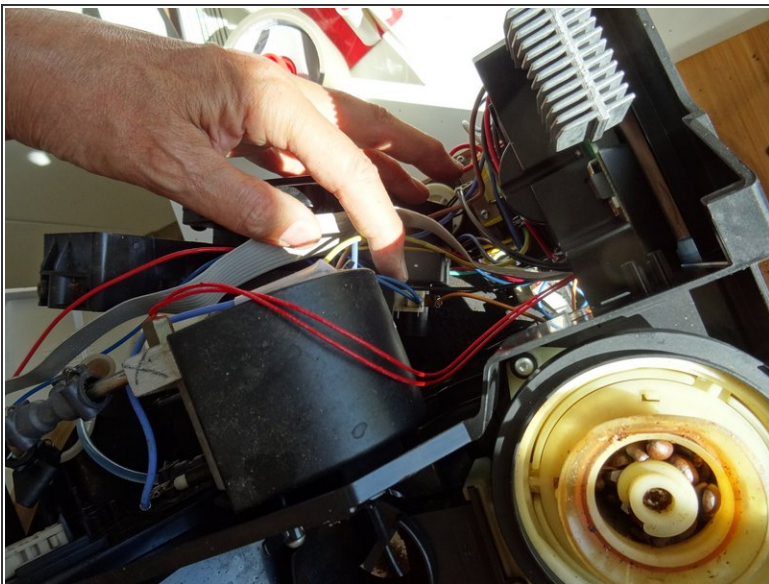


## Step 7



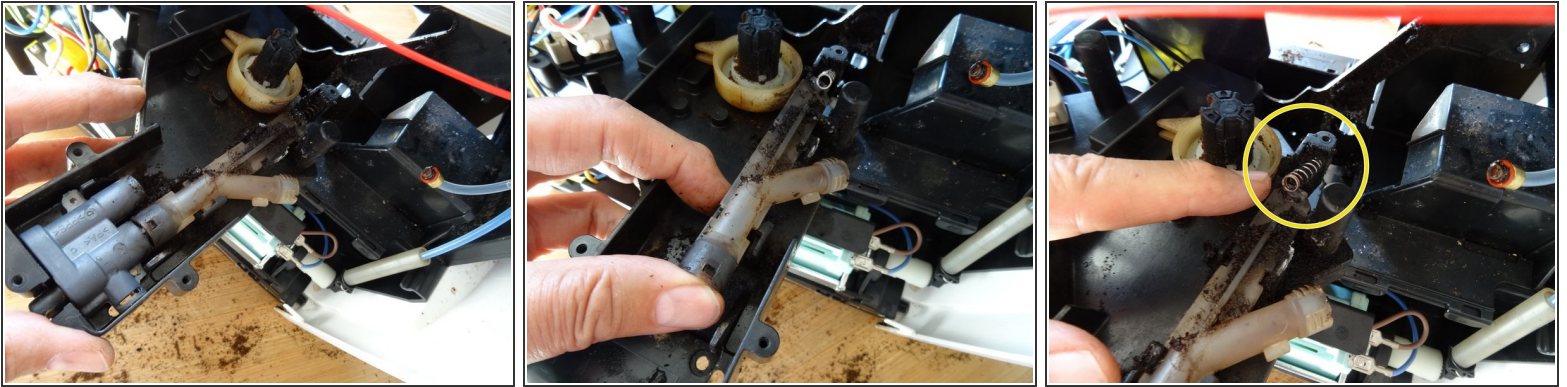
- i** The drainage valve is directly plugged to the gear drive. The drive is fixed with five Torx T10 screws on the center panel behind the brew group.
- Remove the five Torx T10 screws holding the gear drive in place.

## Step 8



- Push the gear drive outwards to the left. Pay attention, several cables might get caught.
- Lay the gear drive on its side. Loosen the upper water connector by pulling the clamp and then sliding off the hose. Mind the O-ring on the end of the hose, replace it if necessary.

## Step 9 — Drainage Valve



- The drainage valve is exposed.
- Remove the spring on the lower end of the valve.
- Lift the upper gray part of the valve. Push the lower part of the valve a little bit downwards und lift it out.

Apply the steps in reverse order to reassemble the machine.