



# HP EliteBook 1050 G1 Screen Replacement

How to replace the screen for the HP EliteBook 1050 G1.

Written By: Grant Gabrielson



---

## INTRODUCTION

This guide is meant to help those with malfunctioning displays in their HP EliteBook 1050 G1 devices. A device can be identified as being in need of screen repair when it can be turned on while the screen remains completely dark. This issue can be caused by loose wires or missing connections, but in the case the display assembly itself is defective, it requires a full replacement.

---



### TOOLS:

- [Phillips #00 Screwdriver](#) (1)
  - [Spudger](#) (1)
  - [iFixit Opening Tools](#) (1)
  - [TR9 Torx Security Screwdriver](#) (1)
-

## Step 1 — Battery



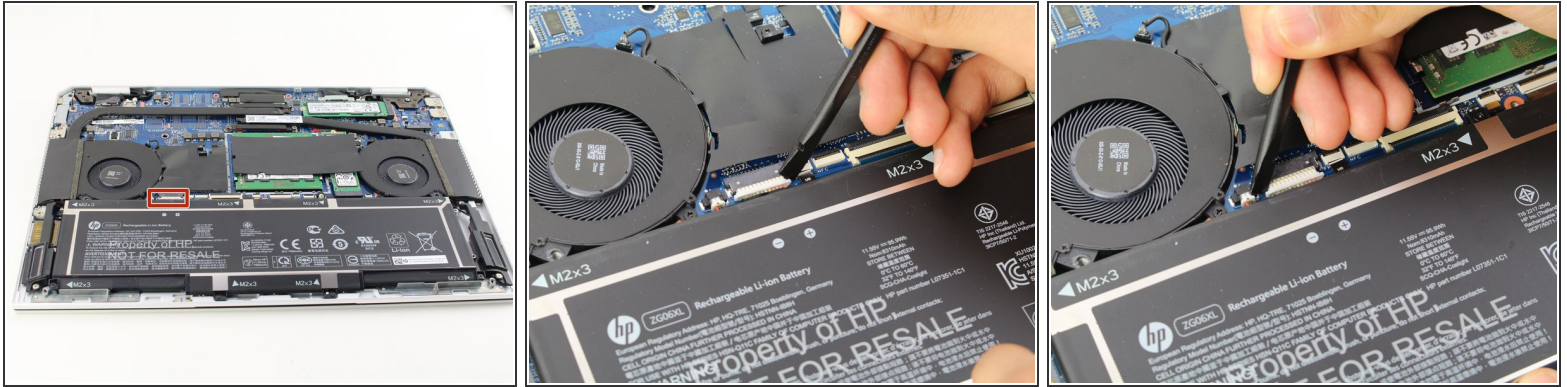
- ⓘ Be sure to power off and unplug your device before you begin your repair.
- Close your laptop and turn it over so that the side without the HP logo is facing you.
- Using the TR9 screwdriver, loosen the nine screws from the base of the device.
- ⓘ These screws do not come out. Instead of removing them, you should simply loosen all the screws and proceed to the next step.

## Step 2



- Remove the base by inserting the plastic opening tool into the slit between the two portions of the case and gently prying the metal cover away from the body of the device.
- Slowly work your way around the edge of the base.
- Lift the cover of the laptop off of the body of the device.

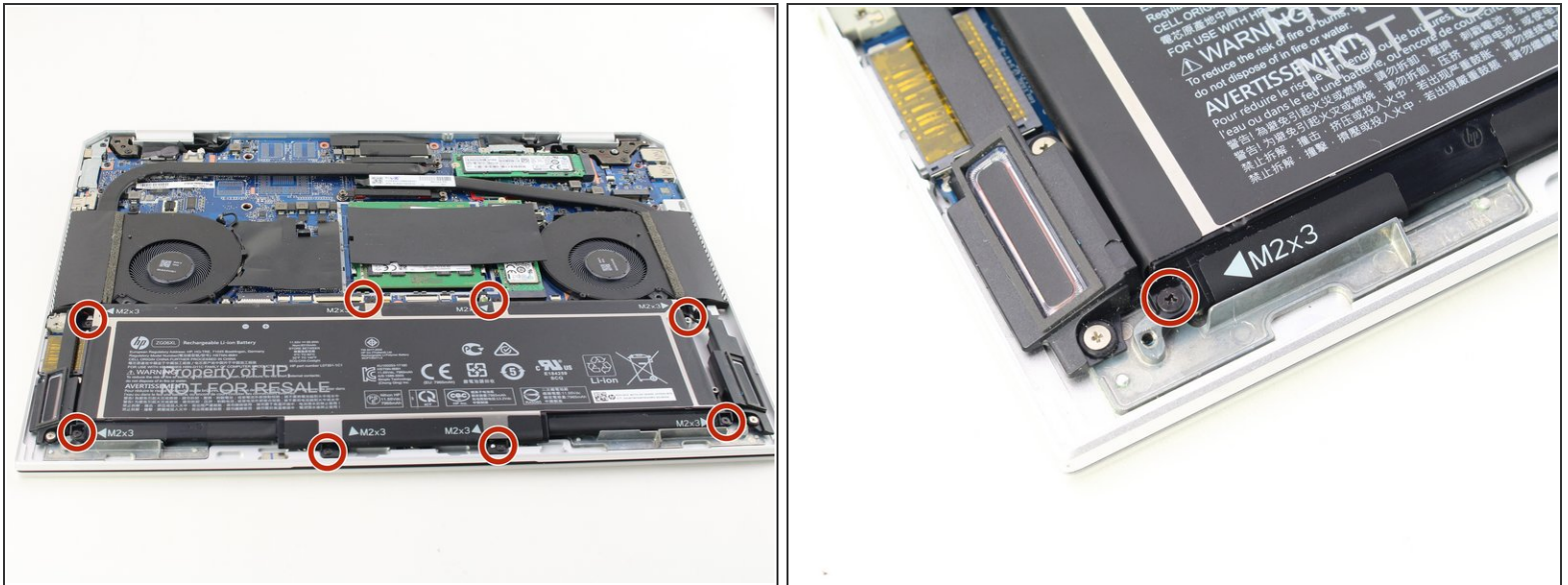
## Step 3



- Find the connector between the battery and the device. It is on the left-hand side above the battery.
- Use the spudger to gently pull the corners of the connector away from the black housing.
- ⓘ Alternate working each corner to avoid damaging the connector.



## Step 4



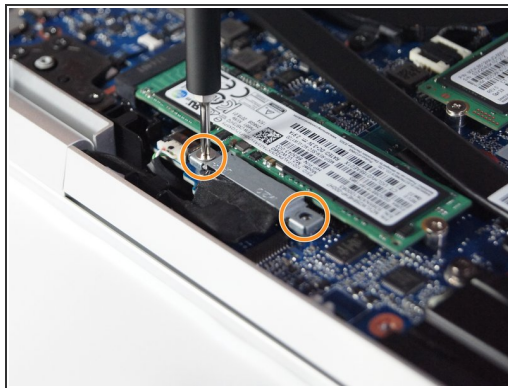
- Remove the seven black 3mm Phillips #00 screws next to the M2x3 label along the edge of the battery using the Phillips #00 screwdriver.
- ⓘ There are arrows next to the labels that will help you identify the screws.
- ⚠ HP placed Threadlocker Blue Sealant around the screws to keep them from loosening, so be careful to not strip the screws. To avoid this, apply constant downward pressure on the screws during this step.
- ⓘ In this step, a JIS #00 screwdriver could be more useful than a regular Phillips #00 screwdriver.

## Step 5



- Grip the battery by the edges and lift it out of its housing.

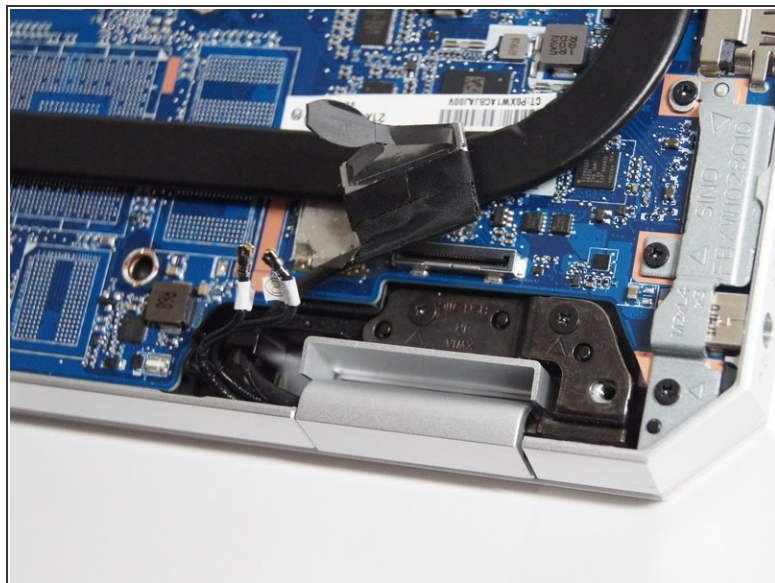
## Step 6 — Screen



- Locate the display cable connector bracket. It is near the edge of the device and the hinge for the screen.
- Remove the two silver 2 mm screws from the display cable connector bracket using the Phillips #00 screwdriver.
- Remove the bracket and unplug the display cable from the board.

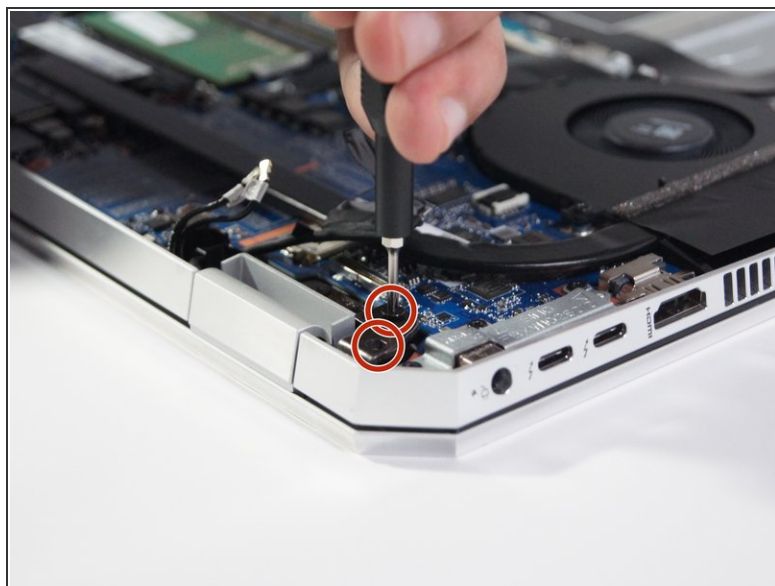
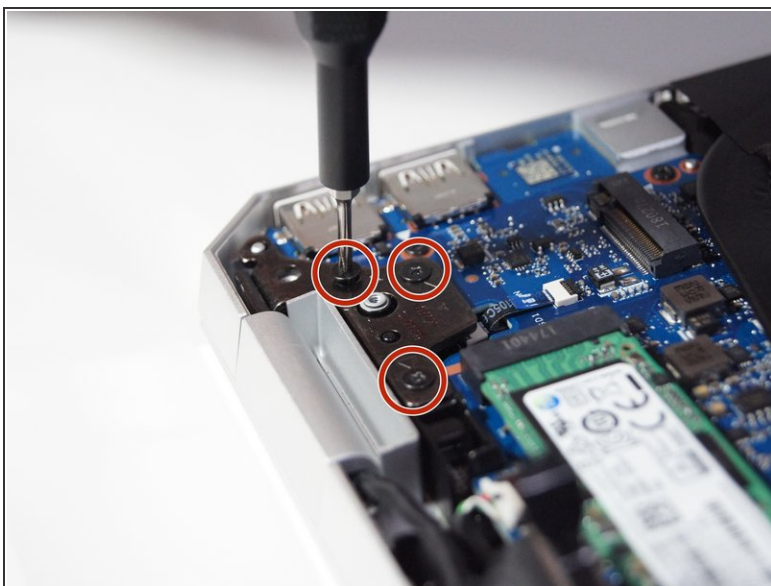


## Step 7



- Remove the camera cable from the board as indicated.

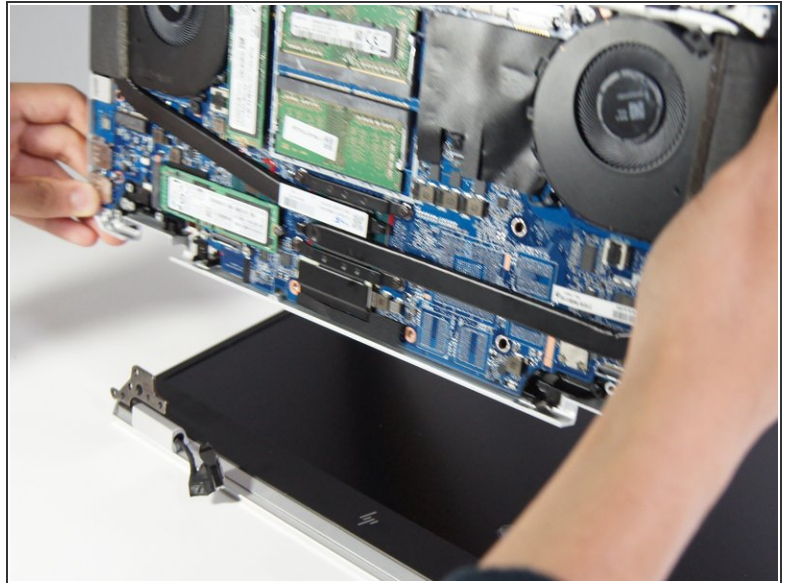
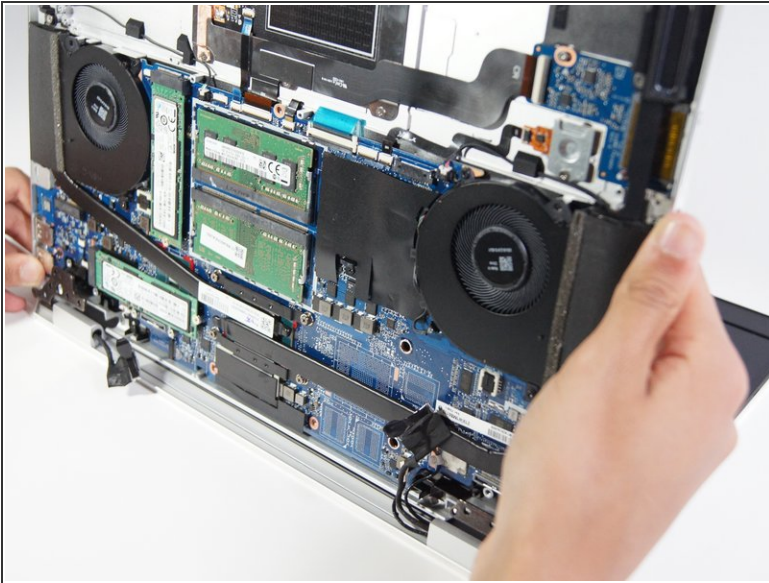
## Step 8



- Remove the five black 5 mm screws from the screen brackets near the screen hinges using the Phillips #00 screwdriver.



## Step 9



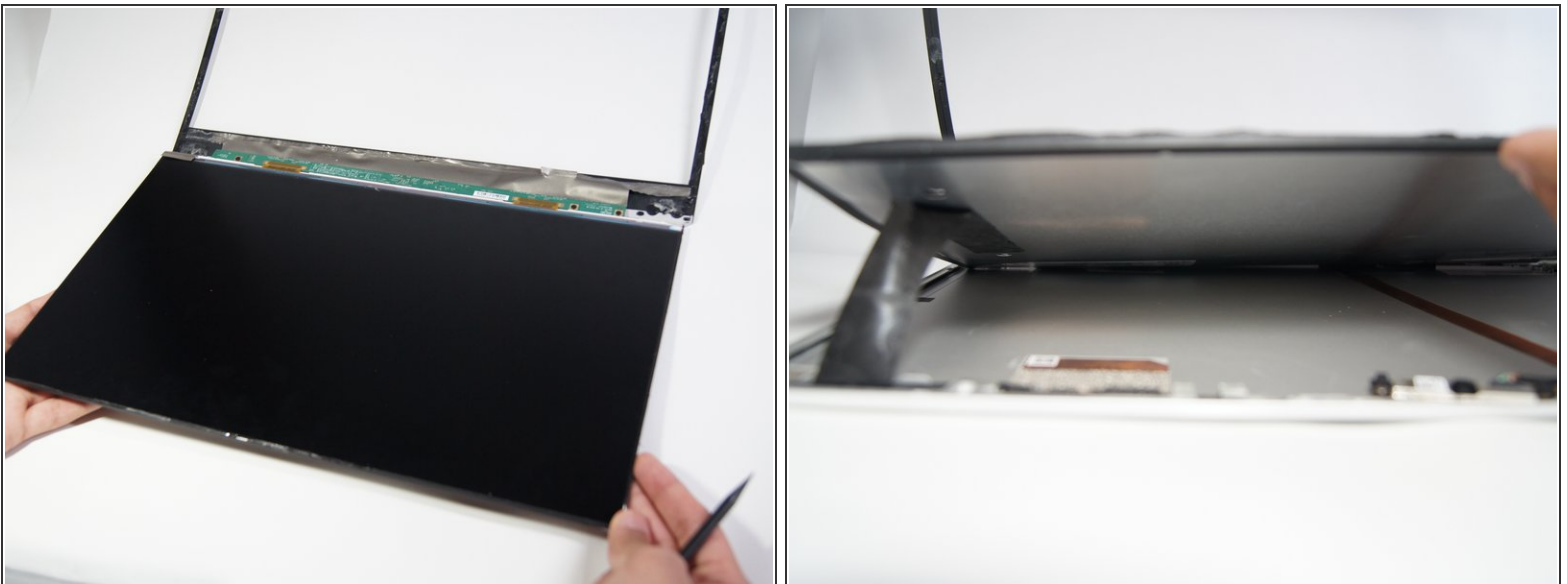
- Open the remaining components of the laptop so that the display and keyboard are separated as much as possible.
  - Slide the device upwards off of the screen brackets. The display should separate entirely from the bottom half of the device.
- i** It may take some wiggling around to get the two parts of the computer apart.

## Step 10



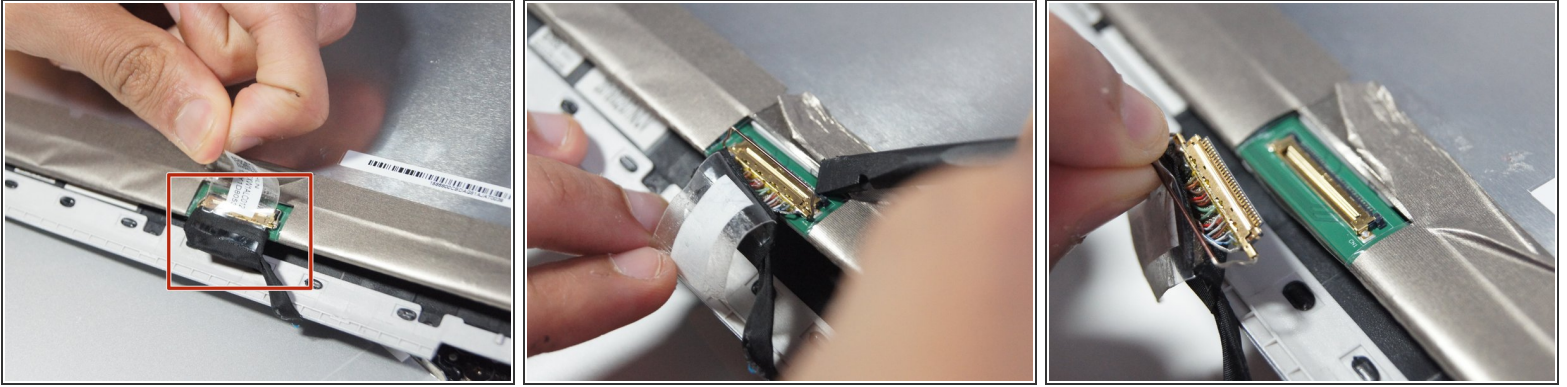
- Pry the display bezel away from the screen by using the iFixit opening tool and working it around the edges.
- ⓘ While the display bezel may resist more than you may expect, it will eventually give so do not be afraid to apply force. The screen is connected to the display bezel with an adhesive.

## Step 11



- Peel away and remove the screen from the silver laptop shell.

## Step 12



- Remove the plastic label covering the cable.
- Using the spudger, pry up the small bar that covers the cable.
- Remove the display cable and the screen will be completely separate from the rest of the device.

To reassemble your device, follow these instructions in reverse order.