



HP Elitebook x360 1040 G5 Lower Case Replacement

Remove the lower case to access the internal components of your HP Elitebook x360 1040 G5.

Written By: Corey Agena



INTRODUCTION

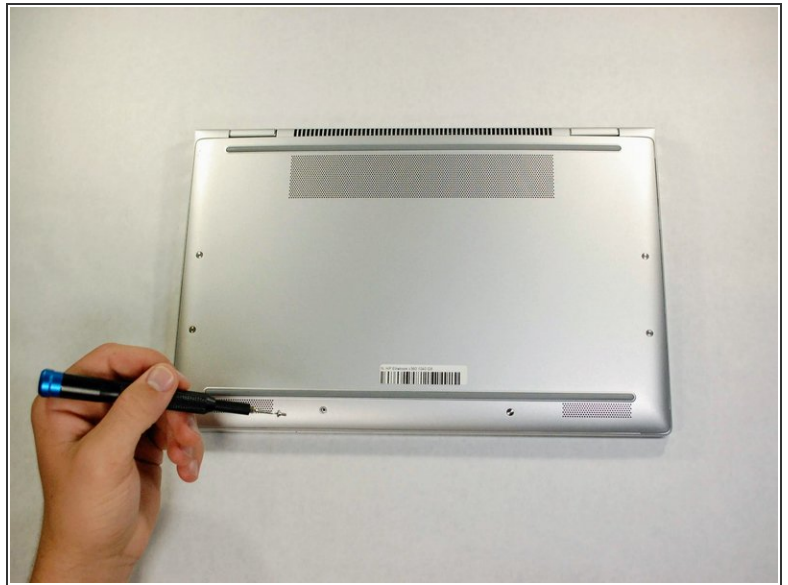
Remove the lower case to access the internal components of your HP Elitebook x360 1040 G5.




TOOLS:

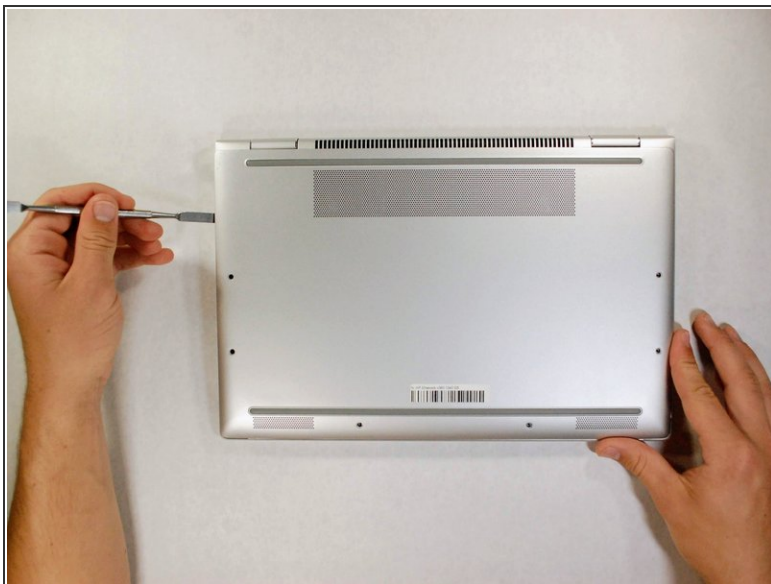
- [iFixit Precision Bit Driver](#) (1)
 - [Magnetic Project Mat](#) (1)
 - [Metal Spudger](#) (1)
 - [T5 Torx Screwdriver](#) (1)
-

Step 1 — Lower Case



-  Power off device before disassembly.
- Use the T5 Torx screwdriver to remove the six 4 mm screws from the underside of the laptop.

Step 2



- Pry open the lower case from where it meets the laptop base.
- Remove the lower case from the work area.

To reassemble your device, follow these instructions in reverse order.