



Anki Vector Capacitive Touch Sensor Replacement

How to remove and replace the Anki Vector's touch sensor.

Written By: Shay Takei



INTRODUCTION

This guide details how to fully remove the Capacitive Touch Sensor of the Anki Vector.

Remember to only embark on this guide if you have followed the [Anki Vector Troubleshooting](#) and the device is still broken.

While disassembling Vector, make sure to look out for disconnected cables and other broken parts, as often times these can be fixed without entirely replacing the sensor.



TOOLS:

- [Spudger](#) (1)
 - [iFixit Opening Tools](#) (1)
 - [Phillips #0 Screwdriver](#) (1)
 - [Nylon Tipped Tweezers](#) (1)
 - [Jimmy](#) (1)
-

Step 1 — Belts



- Raise Vector's arms above his head.

Step 2



- Using your thumb and index finger, grab the lower portion of the belt near the large wheel and pull the belt off.
- Repeat on the other side.

Step 3 — LCD Facial Display



- Using the iFixit opening tool, insert the corner under Vector's golden side panel and lightly twist.
- Repeat this step on the other side.
- ⓘ The panel should pop off without much force.

Step 4



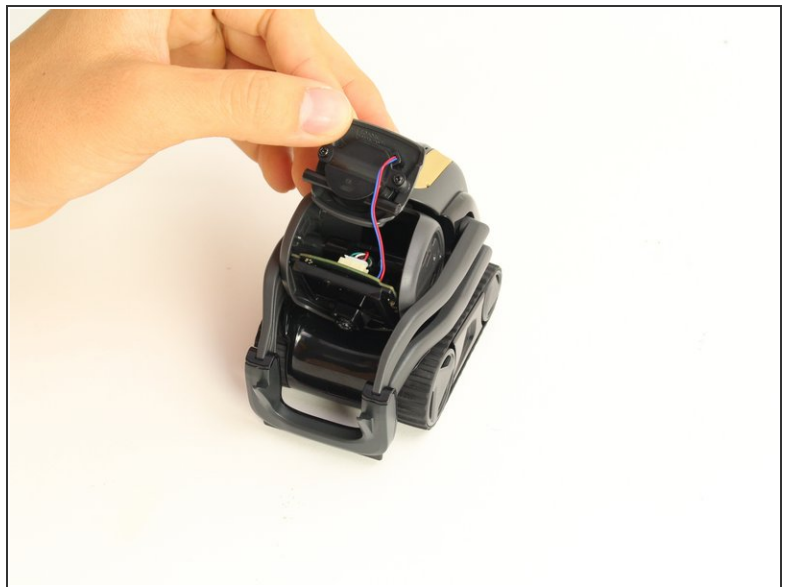
- Insert the corner of the square end of the spudger under the side plate above the partially visible screw.
- Lightly turn the spudger to separate the plate from Vector's head.
- Work the spudger around the plate until it comes off.
- Repeat this step on the the other side.

Step 5



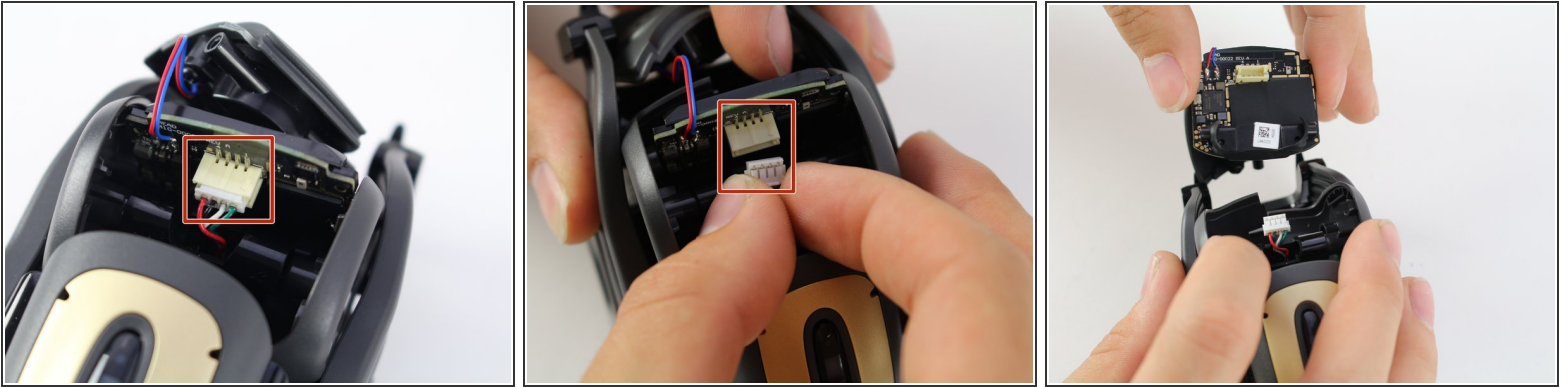
- Using a Phillips #0 screwdriver, unscrew the two 2 mm screws on the side of Vector's head.
- Repeat this step on the opposite side.

Step 6



- Pull apart Vector's head. It should separate down the middle.
- Remove the screen protector by gently pulling it free from the two face halves.

Step 7



- Using your thumb and index finger, unplug the display from the plug in Vector's neck.
- Pull the LCD and speaker assembly from Vector's head.

⚠ There is a very thin insulating rubber sheet located at the base of the screen. Be careful not to tear it when removing the display.

Step 8 — Capacitive Touch Sensor



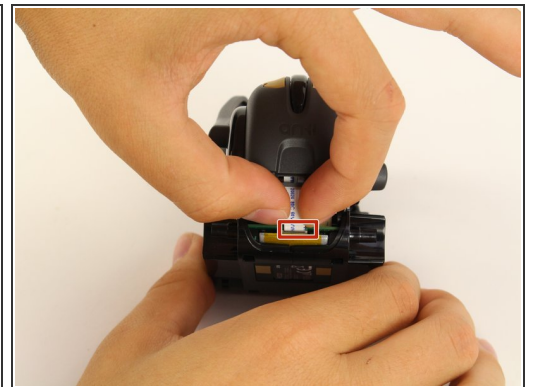
- Using the Jimmy, insert the straight edge of the blade in recess groove in Vector's front wheel.
- Slowly apply torque to the jimmy until the wheel cover pops off.
- Repeat for the rear wheel.

Step 9



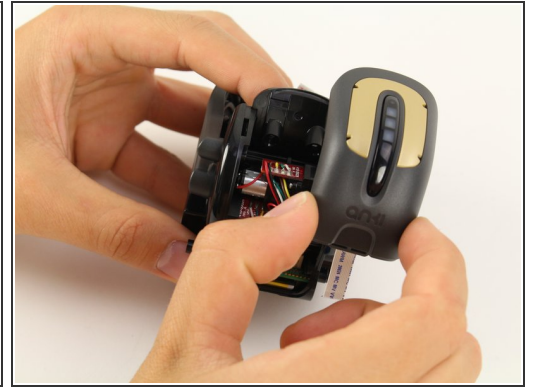
- Using a Phillips #0 screwdriver, unscrew the two screws on the exposed wheels.
- Once the screws are gone, remove the wheels from Vector's body.
- Repeat this on the other side.

Step 10



- Gently remove the rear panel by gripping it towards the top and pulling out and up.
- Gently pull out the ribbon cable from the plug between the motherboard and the weight.

Step 11



- Using a Phillips #0 screwdriver, unscrew the two screws located behind Vector's neck.
- Lift the capacitive touch sensor assembly off of the body

To reassemble your device, follow these instructions in reverse order.