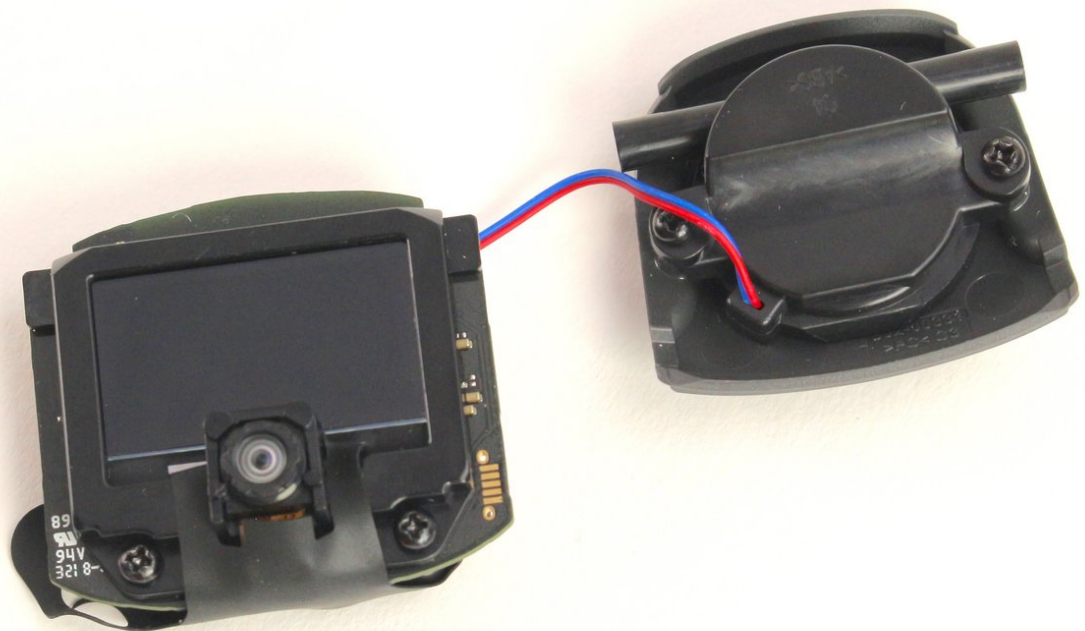




# Anki Vector LCD Facial Display Replacement

This guide will show Anki Vector owners how to remove and replace Vector's facial display screen.

Written By: Shay Takei



## INTRODUCTION

This guide outlines the steps in fully removing the LCD facial display of the Anki Vector. Such a procedure should be executed only if none of the solutions on the [Anki troubleshooting guide](#) were unsuccessful.

While disassembling Vector, make sure to check for loose cables/connectors and other broken parts. Often times these can be fixed without replacing the entire display.

Be careful to not rip the rubber sheet on the back of the display while removing or working with it, as it is very delicate and easy to tear.




### TOOLS:

- [Spudger](#) (1)
  - [iFixit Opening Tools](#) (1)
  - [Phillips #0 Screwdriver](#) (1)
-

## Step 1 — LCD Facial Display



- Using the iFixit opening tool, insert the corner under Vector's golden side panel and lightly twist.
  - Repeat this step on the other side.
-  The panel should pop off without much force.

## Step 2



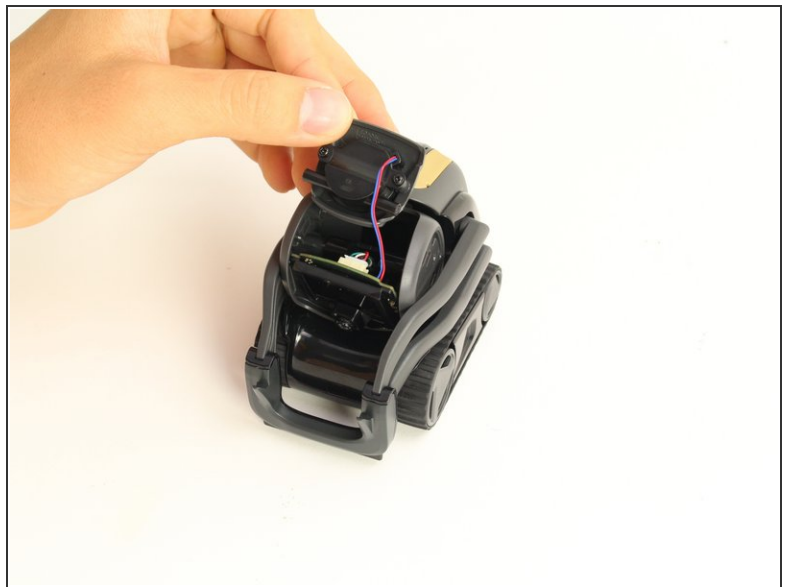
- Insert the corner of the square end of the spudger under the side plate above the partially visible screw.
- Lightly turn the spudger to separate the plate from Vector's head.
- Work the spudger around the plate until it comes off.
- Repeat this step on the the other side.

### Step 3



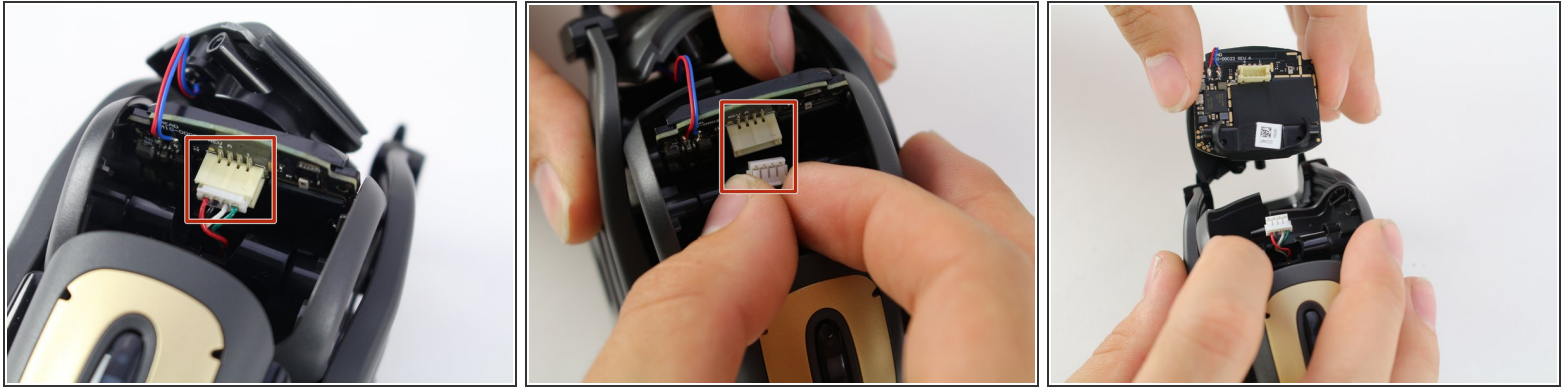
- Using a Phillips #0 screwdriver, unscrew the two 2 mm screws on the side of Vector's head.
- Repeat this step on the opposite side.

### Step 4



- Pull apart Vector's head. It should separate down the middle.
- Remove the screen protector by gently pulling it free from the two face halves.

## Step 5



- Using your thumb and index finger, unplug the display from the plug in Vector's neck.
  - Pull the LCD and speaker assembly from Vector's head.
- ⚠ There is a very thin insulating rubber sheet located at the base of the screen. Be careful not to tear it when removing the display.

To reassemble your device, follow these instructions in reverse order.