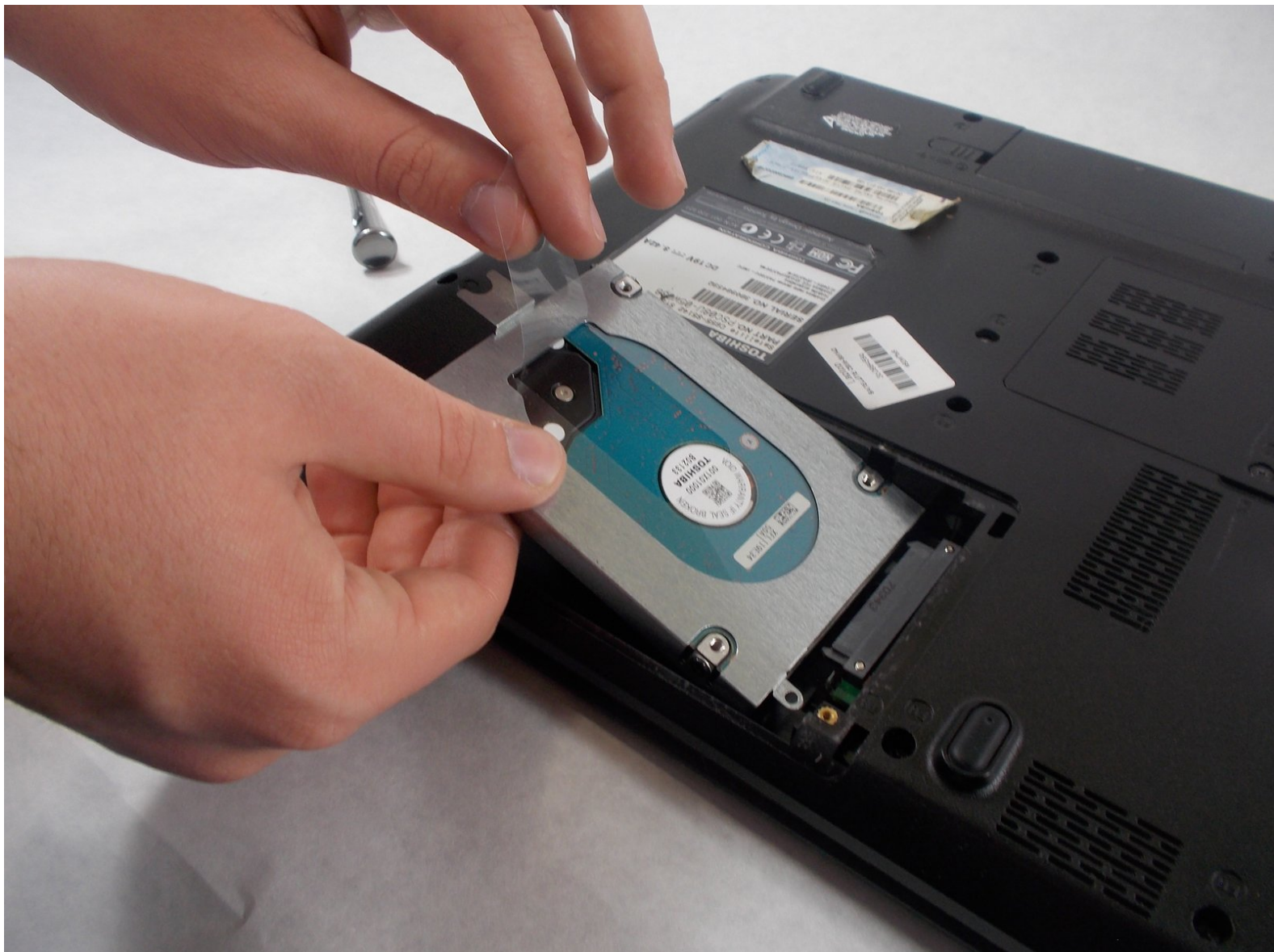




# Toshiba Satellite C655-S5142 Hard Disk Drive Replacement

If your Toshiba C655-S51142 has slowed to a...

Written By: Alex Kozlowski



## INTRODUCTION

If your Toshiba C655-S5142 has slowed to a snail's pace or has completely crashed, it may be time to replace your hard drive. Follow this guide to replace the hard drive.

The hard drive is the part of the computer that stores files, applications, pictures and even the entire operating system. Signs of a failing hard drive include receiving frequent error messages, a major computer slow down or the dreaded blue screen of death. But, before you grab your screw driver, review the [troubleshooting page](#) for tips that may get you back up and running without fully replacing the hard drive.

Before you begin, make sure you [backup your hard drive](#). Also, be sure to power off your computer and disconnect from electrical sources.



### TOOLS:

- [Phillips Head Screwdriver: Size PH1](#) (1)
-

## Step 1 — Hard Disk Drive



**⚠ Unplug your computer, and make sure that it is shut off before starting.**

- Flip over your laptop, making sure the hard drive is facing you.

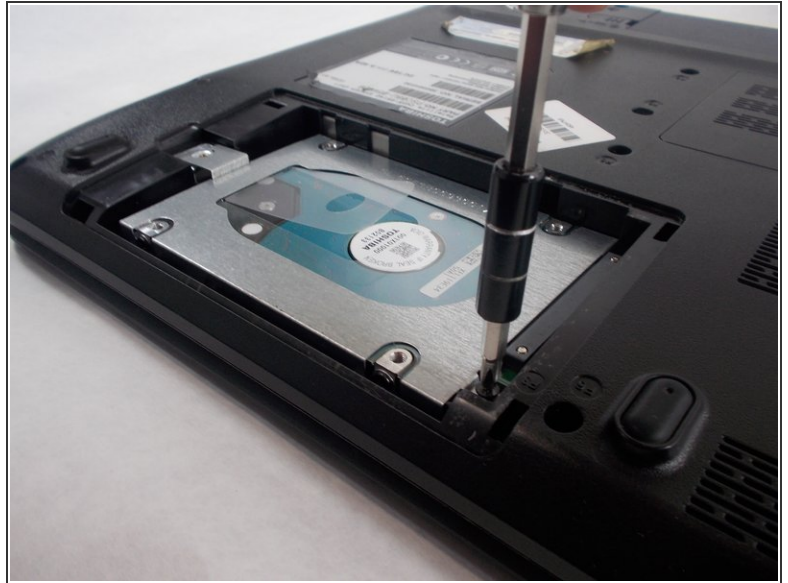
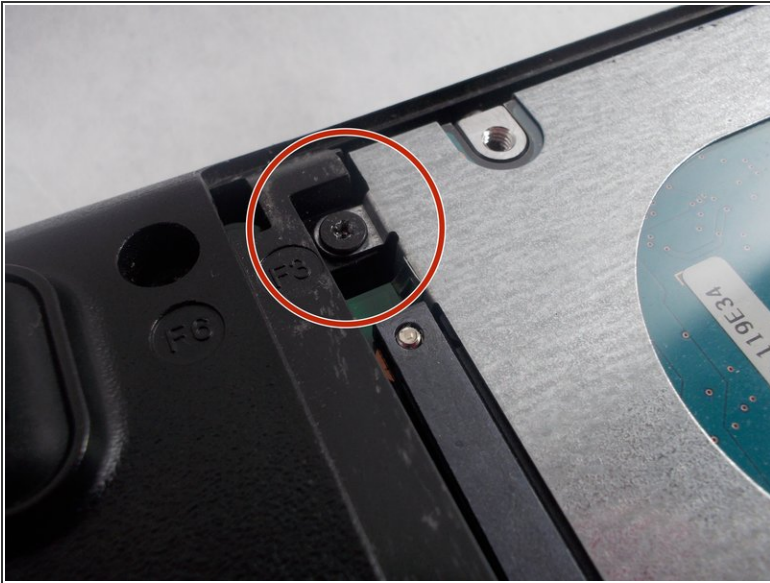
## Step 2



- Using a Phillips head screwdriver, remove the one screw holding the backplate on.



### Step 3



- With a Phillips head screwdriver remove the final screw holding the hard drive in place.

### Step 4



- To remove the hard drive, lift up the plastic tap attached to it and slowly pull up using your other hand as support.

To reassemble your device, follow these instructions in reverse order.