



# Motorola Moto E5 Play Battery Replacement

Follow this guide to replace the Moto E5 Play's...

Written By: Craig Lloyd



## INTRODUCTION

Follow this guide to replace the Moto E5 Play's rechargeable battery. If your battery is swollen, [take appropriate precautions](#).

Before you begin, download the [Rescue and Smart Assistant](#) app to backup your device and diagnose whether your problem is software or hardware related.

**For your safety, discharge your existing battery below 25% before disassembling your phone.** This reduces the risk of a dangerous thermal event if the battery is accidentally damaged during the repair.

---

### TOOLS:

[Spudger](#) (1)

### PARTS:

[Moto G4 Play, E4, E5 Play Replacement Battery](#) (1)

---

## Step 1 — Back Cover



- Insert your fingernail or the flat end of a spudger into the notch on the bottom right corner of the phone.
- Pry with your fingernail or twist the spudger to release the back cover's clips from the phone.

## Step 2



- Insert your fingernail or the flat end of a spudger into the seam on the bottom of the phone and slide it along the edge to release the clips holding the back cover to the phone.

## Step 3



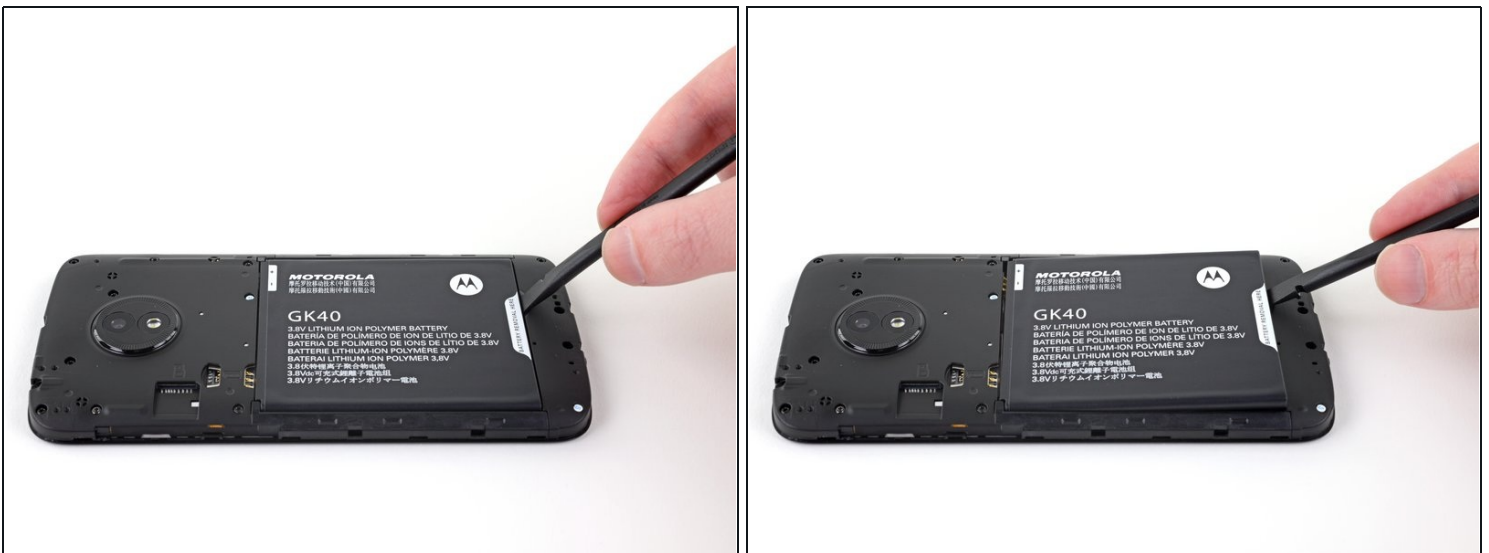
- Continue sliding your fingernail or spudger along the seam around the rest of the phone to release the remaining clips.

## Step 4



- Lift the back cover and remove it from the phone.
- ☑ To reinstall the back cover, align the cover with the phone and squeeze along the edges to snap the clips back into place.

## Step 5 — Battery



- Insert your fingernail or the flat end of the spudger into the notch at the bottom of the battery.
- Pry with your fingernail or spudger to free the battery from its recess.

## Step 6



- Remove the battery.
- ★ When installing the battery, make sure the battery's contacts line up with the three gold pins in the top right of the battery compartment.

Compare your new replacement part to the original part—you may need to transfer remaining components or remove adhesive backings from the new part before installing.

**To reassemble your device, follow the above steps in reverse order.**

Take the time to [calibrate your new battery](#) to ensure optimal functionality.

Take your e-waste to an [R2 or e-Stewards certified recycler](#).

Repair didn't go as planned? Check out our [Motorola Moto E5 Play Answers community](#) for troubleshooting help.